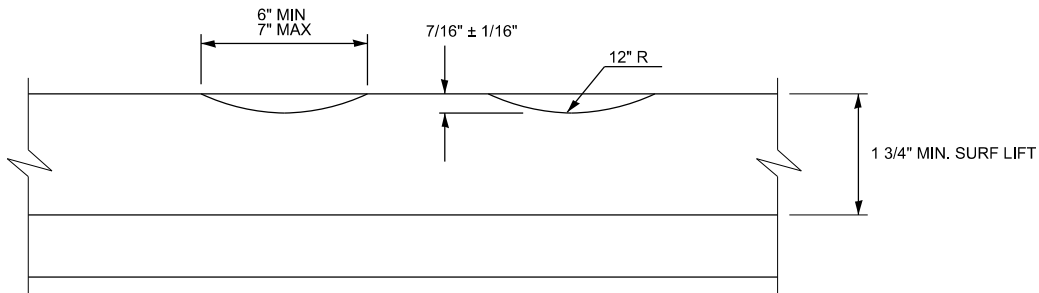
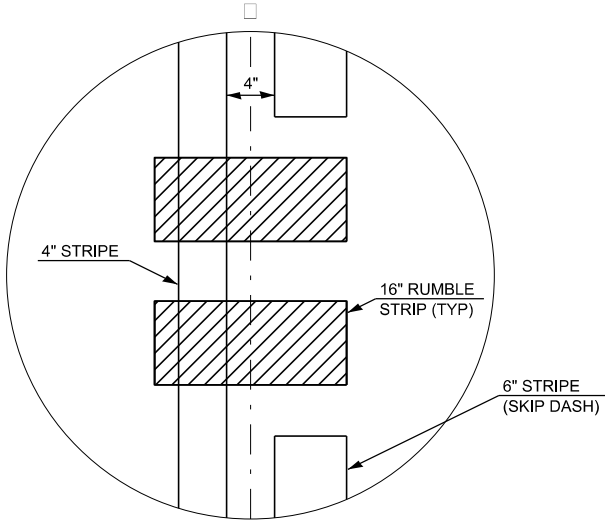


TWO-WAY ROAD (NO PASSING ZONE)

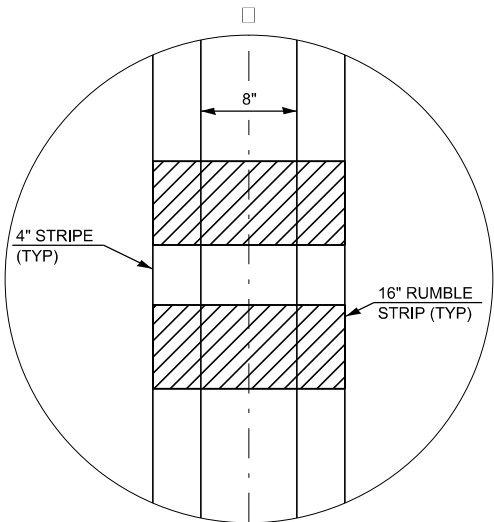


SECTION A-A

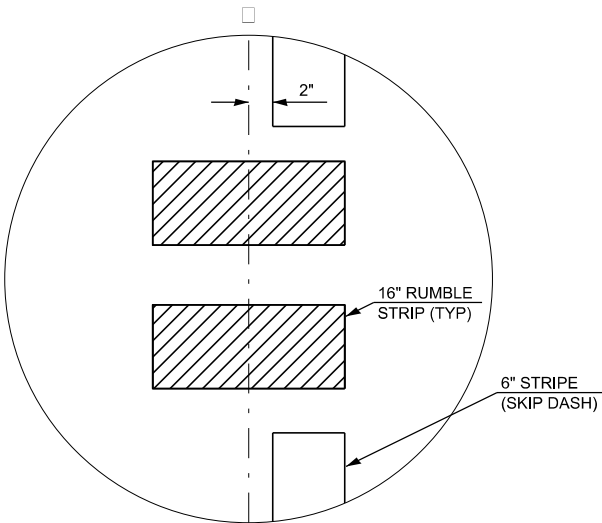
- NOTES:
- RUMBLE STRIPS SHALL NOT BE PLACED ON BRIDGES.
 - ALL RUMBLE STRIPS SHALL BE MILLED.
 - CENTERLINE RUMBLE STRIPS SHALL BE CONTINUOUS THROUGH INTERSECTIONS WITH NO MAJOR ROUTE LEFT TURN LANES.
 - DISCONTINUE CENTERLINE RUMBLE STRIPS THROUGH THE TAPER AND STORAGE LIMITS OF ALL LEFT TURN LANES.
 - WHERE USED, ADJUST SPACING OF RAISED REFLECTIVE PAVEMENT MARKERS TO FALL IN WIDER GAP BETWEEN RUMBLE STRIPS.



DETAIL B (SINGLE DIRECTION PASSING ZONE)



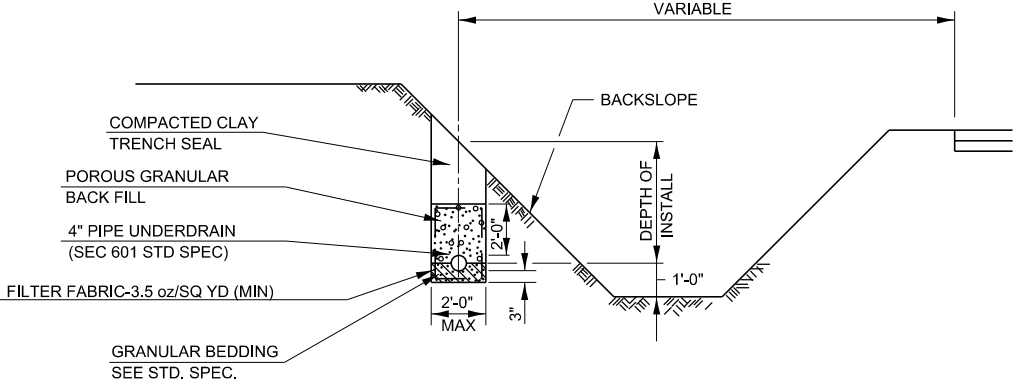
DETAIL B (NO PASSING ZONE)



DETAIL B (PASSING ZONE)

USER NAME	= anthony.grunstad	DESIGNED	-
DRAWN	-	REVISED	-
PLOT SCALE	= 100,000 ' / in.	CHECKED	-
PLOT DATE	= 10/3/23	DATE	-

F.A.P. RTE.	SECTION	COUNTY	TOTAL SHEETS	SHEET NO.
-	-	-	-	-
CONTRACT NO.				
ILLINOIS FED. AID PROJECT				



BACKSLOPE DRAIN

601-1

MODEL dlet 3 details
FILE Name: p:\wms\csw\hantley.com\IN\DOT\Documents\DOT_Offices\Dirlet: 3\Projects\Carcy Details\03 Detail Revisions 2023\601-699 INCIDENTAL CONSTRUCTION.dgn

	USER NAME	= anthony.grunstad	DESIGNED	-	REVISED	-	STATE OF ILLINOIS DEPARTMENT OF TRANSPORTATION				F.A. RTE.	SECTION	COUNTY	TOTAL SHEETS	SHEET NO.
			DRAWN	-	REVISED	-									
	PLOT SCALE	= 100,000 ' / in.	CHECKED	-	REVISED	-					CONTRACT NO.				
	PLOT DATE	= 10/3/23	DATE	-	REVISED	-									
			SCALE:		SHEET	OF	SHEETS	STA.	TO STA.						

GENERAL

CLASS SI CONCRETE SHALL BE USED THROUGHOUT.

THIS SPECIFICATION COVERS SLOTTED DRAIN USED FOR THE REMOVAL OF WATER AS SHOWN ON THE PLANS.

THE SLOTTED DRAIN SHALL BE CORRUGATED PIPE CULVERT WITH INTEGRAL SLOTTED DRAINS.

BEFORE PLACING THE CONCRETE ADJACENT TO THE PIPE, THE SLOT SHALL BE COVERED BY EITHER THIN, FLAT METAL SHEETING OR BY A BOARD NOTCHED TO FIT OVER THE GRATE BARS. THIS COVERING MUST FIT CLOSELY IN THE SLOT TO PREVENT ENTRY OF CONCRETE INTO THE PIPE. PAVING OVER THE SLOTTED DRAIN WILL THEN BE ONE CONTINUOUS OPERATION OVER THE PROTECTED DRAIN. THE PROTECTION FOR THE DRAIN SLOT SHALL THEN BE REMOVED. THE PIPE SHALL DRAIN INTO THE SIDE OF THE INLET. THE OPENING WHERE THE SLOT IS REMOVED SHALL BE COVERED TO PREVENT CONCRETE FROM ENTERING THE PIPE.

THE CORRUGATED STEEL PIPE USED IN THE SLOTTED DRAIN SHALL MEET THE REQUIREMENTS OF AASHTO M36/ ASTM A760.

THE CMP SHALL BE ALUMINIZED STEEL TYPE 2.

THE DIAMETER AND GAGE SHALL BE AS SHOWN ON THE PLAN.

STEEL GRATING SHALL MEET THE GALVANIZING REQUIREMENTS OF AASHTO A123.

THIS WORK WILL BE PAID FOR AT THE CONTRACT UNIT PRICE PER FOOT FOR SLOTTED DRAIN 15" WITH 1 3/4" SLOT, AND SHALL INCLUDE ELBOWS, DRILLING HOLES IN GRATING, SUPPLYING AND PLACING A1 BARS, AND CONCRETE AND GRATING FOR DEPTH SPECIFIED ON PLANS.

USE APPROVED END CAP TO PREVENT CONCRETE ENTRY INTO THE PIPE DURING GUTTER CONSTRUCTION ON THE UPSTREAM END OF THE PIPE.

CONNECTIONS

THE CORRUGATED STEEL PIPE SHALL HAVE A MINIMUM OF TWO REROLLED ANNULAR ENDS.

THE SLOTTED DRAIN BANDS SHALL BE MODIFIED HUGGER BANDS TO SECURE THE PIPE AND PREVENT INFILTRATION OF THE BACKFILL.

WHEN THE SLOTTED DRAIN IS Banded TOGETHER, THE ADJACENT GRATES SHALL HAVE A MAXIMUM 3" GAP.

GRATES

THE GRATES SHALL BE MANUFACTURED FROM ASTM A670, GRADE 36 STEEL. THE SPACERS AND BEARING BARS (SIDES) SHALL BE 3/16" MATERIAL ±0.008".

THE SPACERS SHALL BE ON 6" CENTERS AND WELDED ON BOTH SIDES TO EACH BEARING BAR (SIDES) WITH FOUR (4) 1 1/4" LONG 3/16" FILLET WELDS ON EACH SIDE OF THE BEARING BAR.

THE PLATE EXTENDER SHALL BE 7 GAGE STEEL MEETING ASTM A761.

THE ENGINEER MAY CALL FOR TENSILE STRENGTH TESTS ON THE GRATE IF THE GRATE IS NOT IN COMPLIANCE WITH THE ABOVE SPACER SPECIFICATIONS. IF TENSILE STRENGTH TESTS ARE CALLED FOR, MINIMUM RESULTS FOR AN IN-PLACE SPACER PULLED PERPENDICULAR TO THE BEARING BAR SHALL BE:
T = 12,000 POUNDS FOR 2 1/2" GRATE
T = 15,000 POUNDS FOR 6" GRATE

GALVANIZING

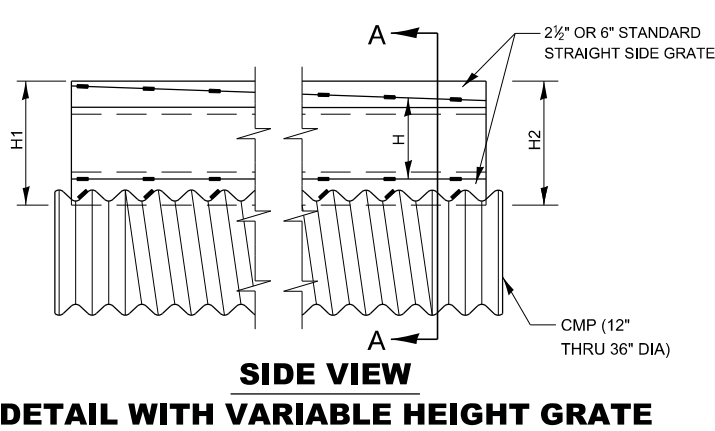
THE GRATE AND PLATE EXTENDERS SHALL BE GALVANIZED IN ACCORDANCE WITH ASTM A123 EXCEPT WITH A 2 OZ GALVANIZED COATING.

GRATE ATTACHED TO CSP

THE GRATE SHALL BE FILLET WELDED WITH A MINIMUM WELD 1" LONG TO THE CSP ON EACH SIDE OF THE GRATE AT EVERY OTHER CORRUGATION.

TOLERANCES - FINISHED SLOTTED DRAIN - 20' LENGTH

VERTICAL BOW = ±3/8"
HORIZONTAL BOW = ±5/8"
TWIST = ±1/2"

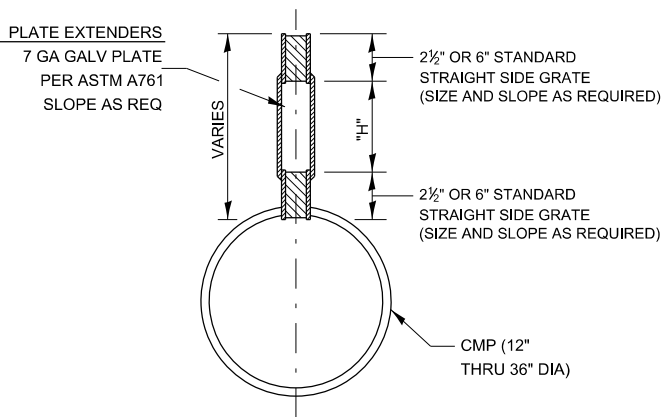


SIDE VIEW

DETAIL WITH VARIABLE HEIGHT GRATE

LOADING CONDITION	MAX. EXTENDER HEIGHT - "H"
H20/H25 * 750 PSI CONCRETE	19"

* 125 PSI TIRE PRESSURE



SECTION A-A

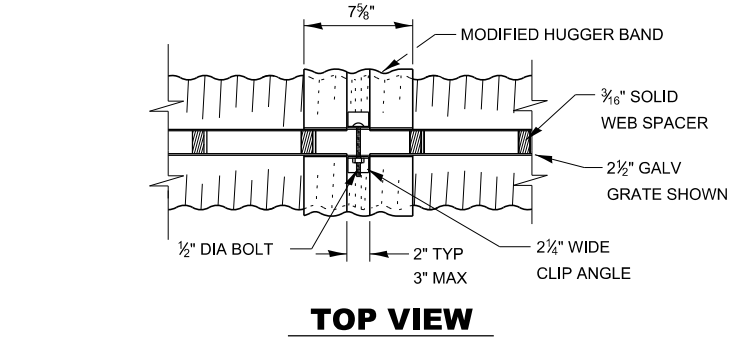
STANDARD SIZES		DIAMETER OF PIPE					
GAGE OF PIPE		12"	15"	18"	24"	30"	36"
16	X	X	X	X	X	X	X
14	X	X	X	X	X	X	X
12	NA	NA	NA	NA	X	X	X

GRATE TYPE		"A"
VERT	2 1/2"	1 3/4"
VERT	6"	1 3/4"
TRAP	2 1/2"	2 1/4"
TRAP	6"	3"

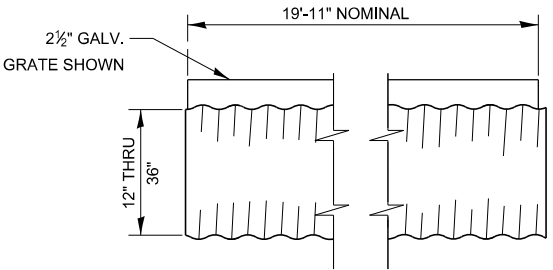
VERT = VERTICAL
TRAP = TRAPIZOIDAL

SLOTTED DRAIN NOTES

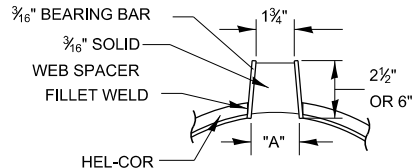
- GRATING IS AVAILABLE IN DEPTHS OF 2 1/2" AND 6".
- VERTICAL GRATING (STRAIGHT SIDES) WITH VERTICAL SPACERS IS ALSO AVAILABLE.
- FOR 6" VERTICAL & TRAPEZOIDAL REQUIREMENTS, THE SLOTTED DRAIN BAND MAY BE FURNISHED WITH THE 4: TECHCO BAND ANGLE.
- DIMENSIONS ARE SUBJECT TO MANUFACTURING TOLERANCES.
- REFERENCE CONTECH BAND MANUAL DWG NO 1002697 FOR BAND DETAILS.
- REFERENCE CONTECH SLOTTED DRAIN DWG NO 1002697.
- DIMENSIONS FOR H1 AND H2 AS REQUIRED.
- H1 AND H2 MEASURED FROM TOP OF GRATE TO BOTTOM OF GRATE.



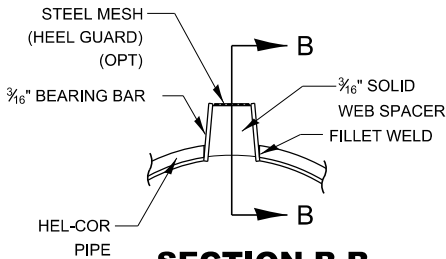
TOP VIEW



TYPICAL PIPE SECTION

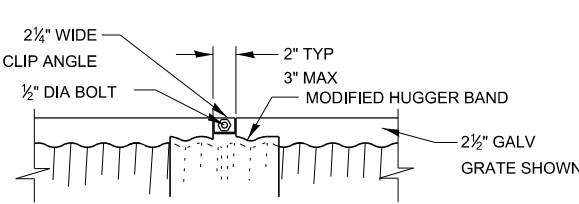


SECTION A-A
STANDARD DETAIL

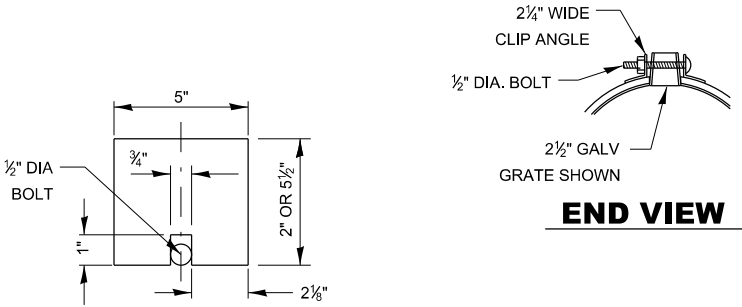


SECTION B-B
DETAIL WITH MESH

(TRAPEZOIDAL GALVANIZED GRATE SHOWN)



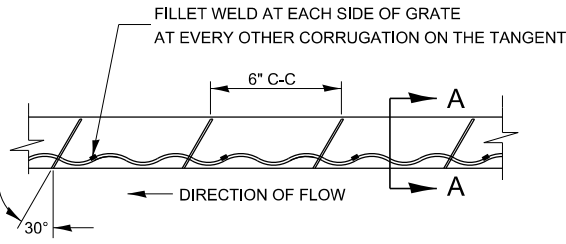
SIDE VIEW



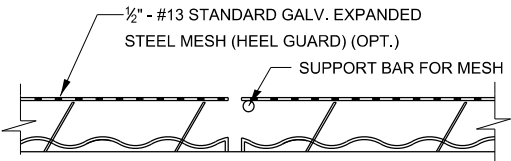
END VIEW

GAP PLATE (OPTIONAL)

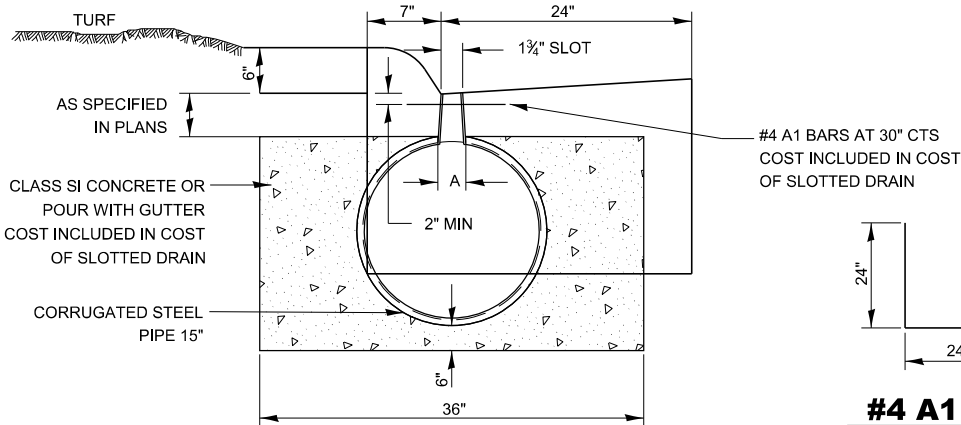
MAY BE PLACED DIRECTLY OVER BAND BOLT TO PROVIDE CONTINUOUS FORM FOR GROUTING



GRATE WELDING DETAIL



SECTION B-B



#4 A1 BARS

601-2

MODEL det 3 details
FILE Name: p:\w\DOT\Documents\DOT Office\Dirlet 3\Projects-Darcy Data\03 Detail Revisions 2023\600-699 INCIDENTAL CONSTRUCTION.dgn

USER NAME = anthony.grunstad	DESIGNED -	REVISED -
PLOT SCALE = 100,000 ' / in.	DRAWN -	REVISED -
PLOT DATE = 10/3/23	CHECKED -	REVISED -
	DATE -	REVISED -

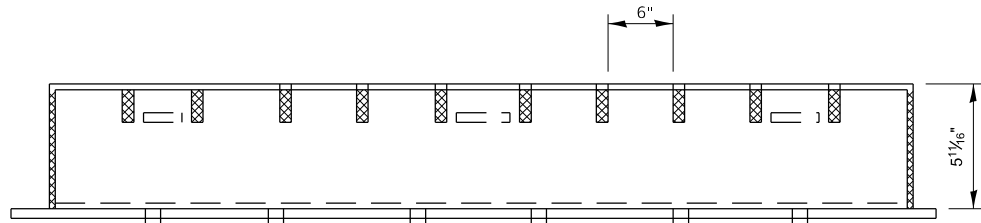
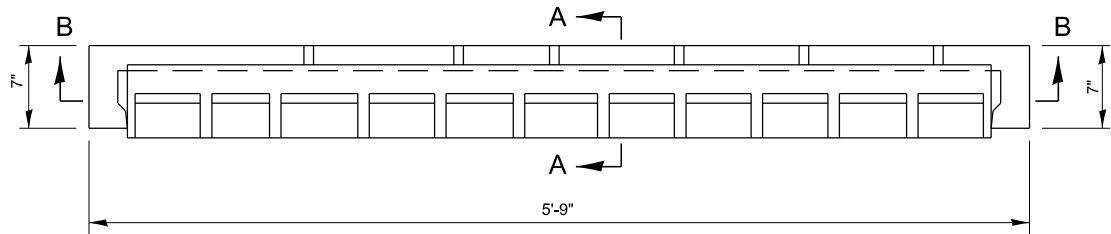
STATE OF ILLINOIS
DEPARTMENT OF TRANSPORTATION

SLOTTED DRAIN PIPE

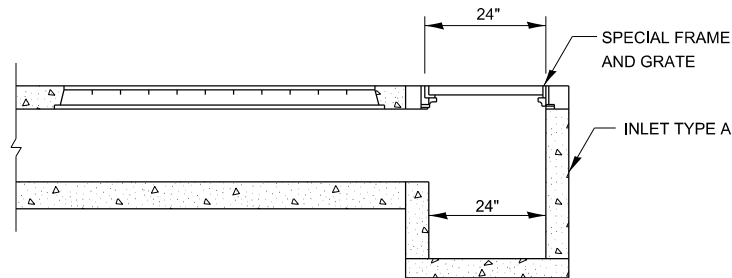
SCALE: SHEET OF SHEETS STA. TO STA.

F.A. RTE.	SECTION	COUNTY	TOTAL SHEETS	SHEET NO.
CONTRACT NO.				
ILLINOIS FED. AID PROJECT				

MODEL: diet 3 details
FILE: \\bentley.com\dwg\dot\Documents\DOT Offices\Director 3\Projects\3-Darcy Details\03 Detail Revisions 2023\601-699 INCIDENTAL CONSTRUCTION.dgn

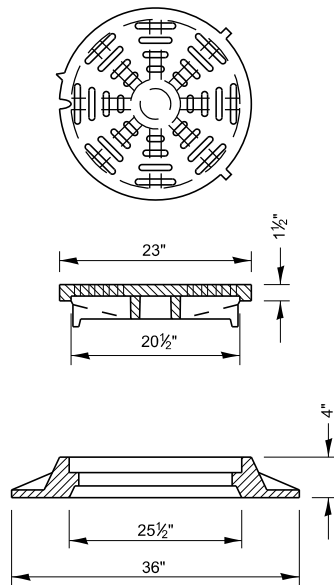


SECTION B-B

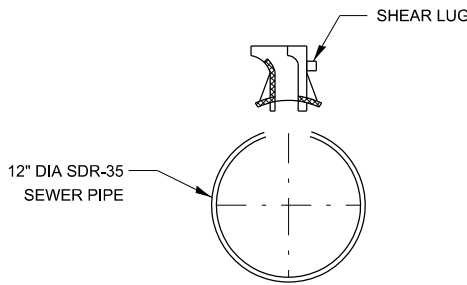


SIDE VIEW

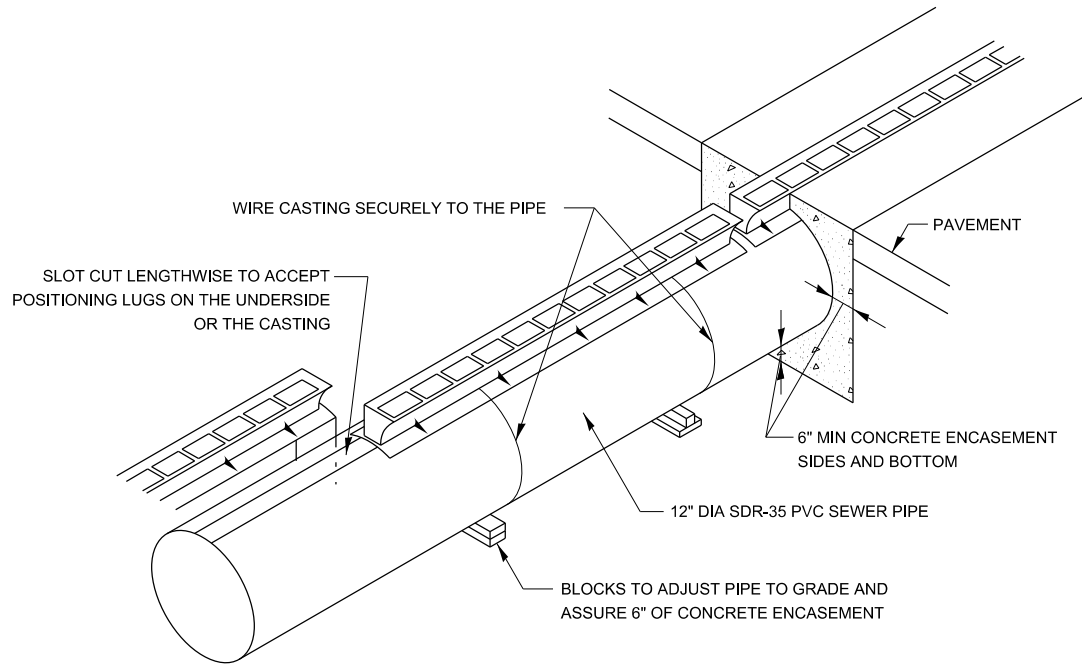
**SPECIAL FRAME
AND GRATE**



TOTAL WEIGHT 285 LBS



SECTION A-A



GENERAL NOTES:

CLASS SI CONCRETE SHALL BE USED THROUGHOUT.

THE CONTRACT UNIT PRICE PER FOOT FOR SLOTTED DRAIN 12" WITH 6" SLOT SHALL INCLUDE THE GRATE, CLASS SI CONCRETE, SDR-35 PVC 12" SEWER PIPE, BLOCKS, WIRE AND EXCAVATION.

THE INLET TYPE A TO BE IN ACCORDANCE WITH STANDARD 602301.

THE CONTRACT UNIT PRICE EACH FOR INLETS, TYPE A, WITH SPECIAL FRAME, OPEN LID SHALL INCLUDE A TYPE A INLET AND THE SPECIAL FRAME AND GRATE DETAILED ABOVE.

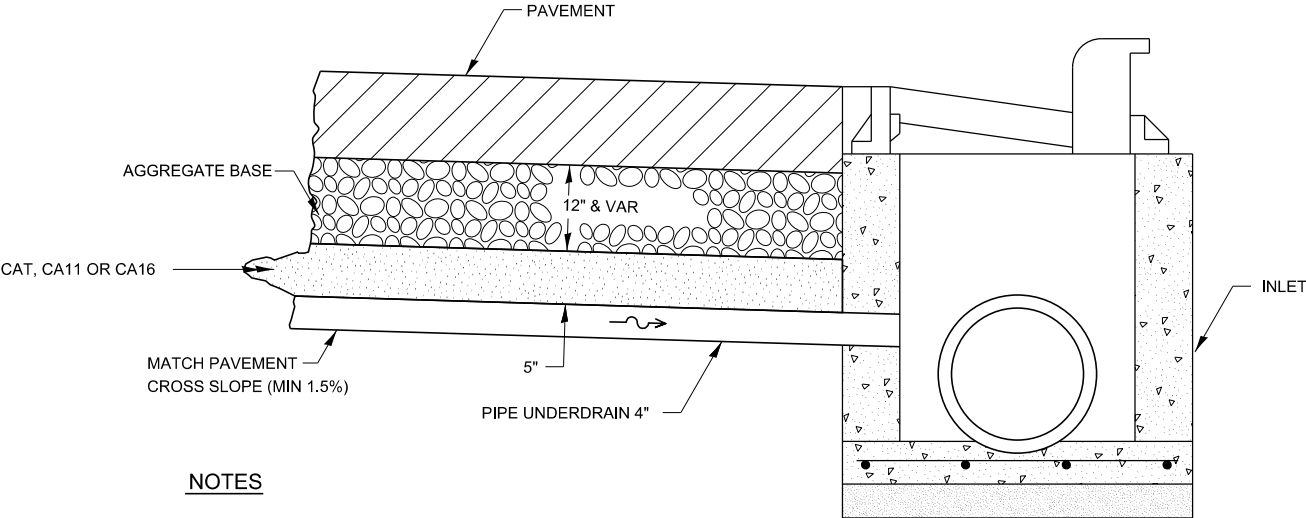
USER NAME	= anthony.grunstad	DESIGNED	-	REVISED	-
DRAWN	-	CHECKED	-	REVISED	-
PLOT SCALE	= 100,000 ' / in.	DATE	-	REVISED	-
PLOT DATE	= 10/3/23				

STATE OF ILLINOIS
DEPARTMENT OF TRANSPORTATION

**DETAIL OF SLOTTED VANE DRAIN
12" WITH 6" SLOT**

SCALE: SHEET OF SHEETS STA. TO STA.

F.A. RTE.	SECTION	COUNTY	TOTAL SHEETS	SHEET NO.
CONTRACT NO.				
ILLINOIS FED. AID PROJECT				



NOTES

DRAINS WILL BE REQUIRED AT ALL INLETS IN "SAG" AREAS AND AS INDICATED IN THE PLANS.

THIS WORK SHALL BE COMPLETED ACCORDING TO SECTION 601 OF THE STANDARD SPECIFICATIONS.

THIS WORK WILL BE PAID FOR AT THE CONTRACT UNIT PRICE PER FOOT FOR PIPE UNDERDRAINS OF THE DIAMETER SPECIFIED WHICH PRICE SHALL INCLUDE THE CAT, CA11 OR CA16 AND THE CONNECTION TO THE INLET.

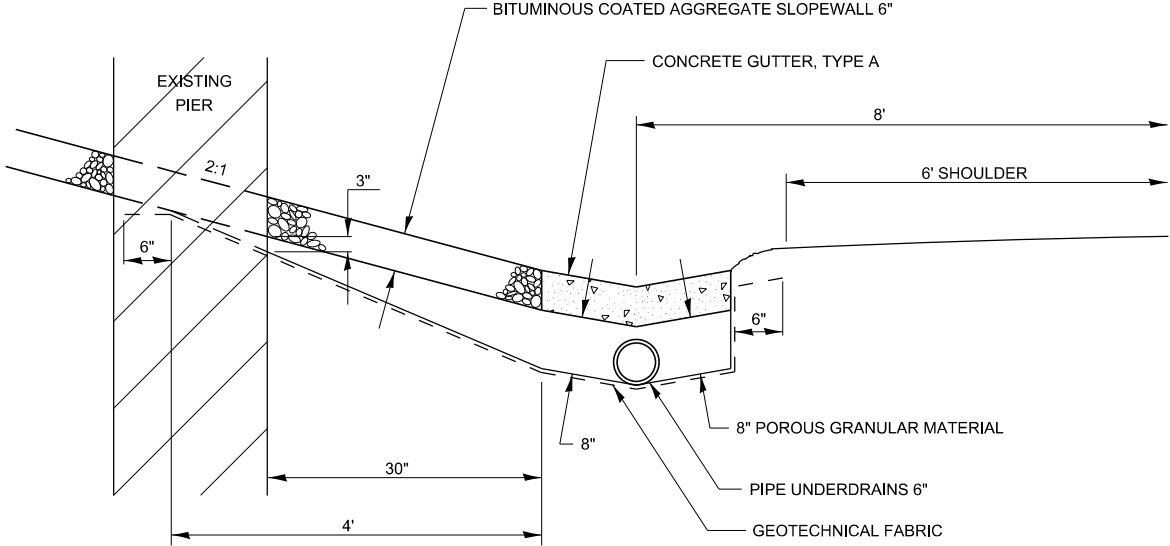
DESIGNER NOTE:
ONLY TO BE USED AT RECOMMENDATION OF MATERIALS

601-4

DRAIN FOR AGGREGATE BASES IN URBAN AREAS

MODEL dlet 3 details
FILE Name: s:\wms\csw.bentley.com\p\WIDOT\Documents\DOT Offices\Director: 3\Projects\Caray Details\03 Detail Revisions 2023\601-4.dgn
INCIDENTAL CONSTRUCTION.dgn

	USER NAME = anthony.grunstad	DESIGNED -	REVISED -	STATE OF ILLINOIS DEPARTMENT OF TRANSPORTATION				F.A. RTE.	SECTION	COUNTY	TOTAL SHEETS	SHEET NO.
		DRAWN -	REVISED -									
	PLOT SCALE = 100,000 ' / in.	CHECKED -	REVISED -									
	PLOT DATE = 10/3/23	DATE -	REVISED -		SCALE:	SHEET	OF	SHEETS	STA.	TO STA.	CONTRACT NO.	
											ILLINOIS	FED. AID PROJECT



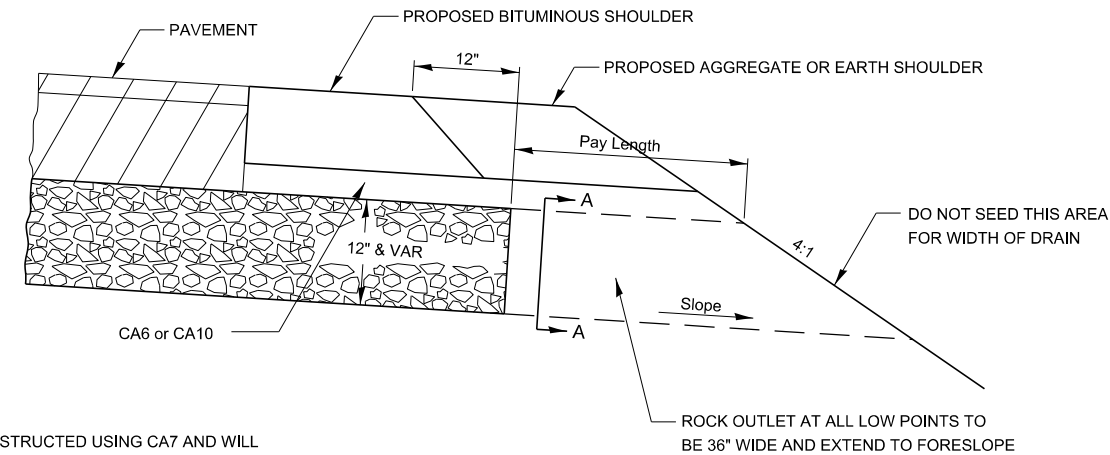
AGGREGATE SLOPEWALL DRAIN

601-5

MODEL dlet 3 details
FILE Name: s:\a\msc\aw.bentley.com\p\WIDOT\Documents\DOT Offices\Director 3\Projects\Caray Details\03 Detail Revisions 2023\601-5\601-5.dgn

	USER NAME	= anthony.grunstad	DESIGNED	-	REVISED	-	STATE OF ILLINOIS DEPARTMENT OF TRANSPORTATION	SCALE: SHEET OF SHEETS STA. TO STA.			F.A. RTE.	SECTION	COUNTY	TOTAL SHEETS	SHEET NO.					
			DRAWN	-	REVISED	-														
	PLOT SCALE	= 100,000 ' / in.	CHECKED	-	REVISED	-														
	PLOT DATE	= 10/3/23	DATE	-	REVISED	-														
												CONTRACT NO.								
												ILLINOIS FED. AID PROJECT								

MODEL: dlet_3_details
FILE: \\nrcs1-pw\mrcs\caw.bentley.com\PIV\DOT\Documents\DOT_Offices\Director_3\Projects\3-Darcy_Details\03_Detail_Revision_2023\601-699_INCIDENTAL_CONSTRUCTION.dgn



NOTES:

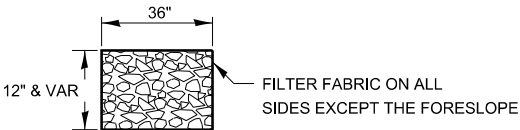
THE ROCK OUTLETS SHALL BE CONSTRUCTED USING CA7 AND WILL BE PAID FOR AT THE CONTRACT UNIT PRICE PER SQ YD FOR DRAIN FOR AGGREGATE BASE COURSE.

THE THICKNESS SHALL BE THE SAME AS THE ADJACENT SUB-BASE MATERIAL AS NOTED ON THE PLANS AND SHALL INCLUDE THE COST OF THE FILTER FABRIC.

THE ROCK OUTLETS WILL BE MEASURED IN SQ YD, THE WIDTH BEING 3' BY THE LENGTH SHOWN ABOVE

THE COST OF THE CA6 OR CA10 UNDER THE SHOULDER SHALL BE INCLUDED IN THE CONTRACT UNIT PRICE PER SQ YD FOR SUB-BASE GRANULAR MATERIAL, TYPE A OF THE THICKNESS SPECIFIED.

THE FILTER FABRIC TO BE USED SHALL CONFORM TO THE FILTER FABRIC USED FOR RIPRAP.



SECTION A-A

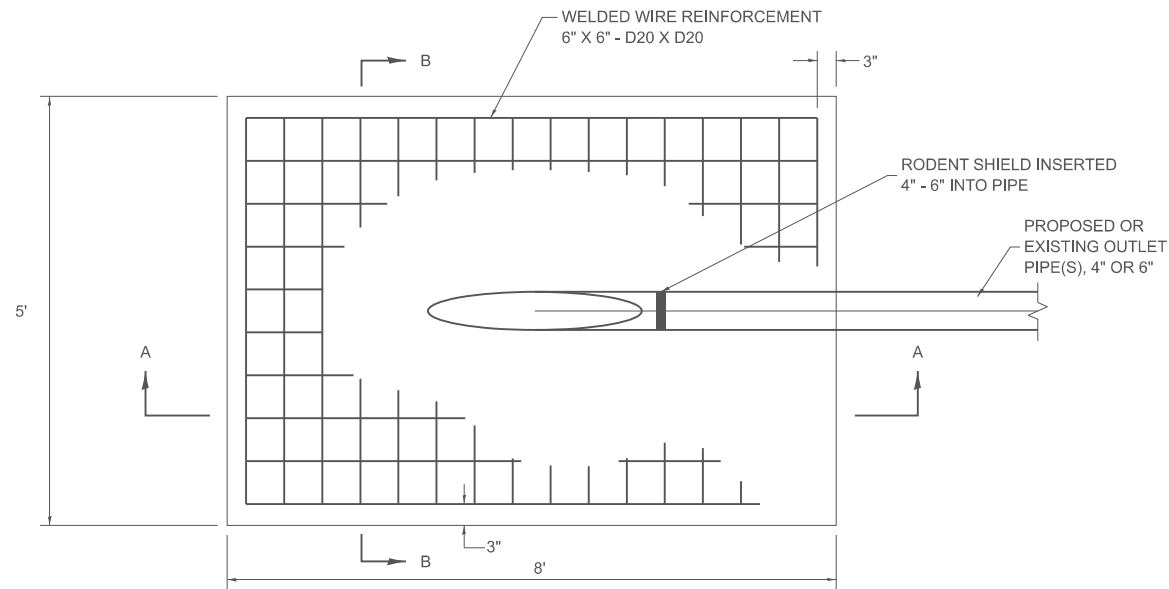
NOTE: SLOPE SAME AS SHOULDER WITH 2% MIN

DRAIN FOR AGGREGATE BASE COURSE

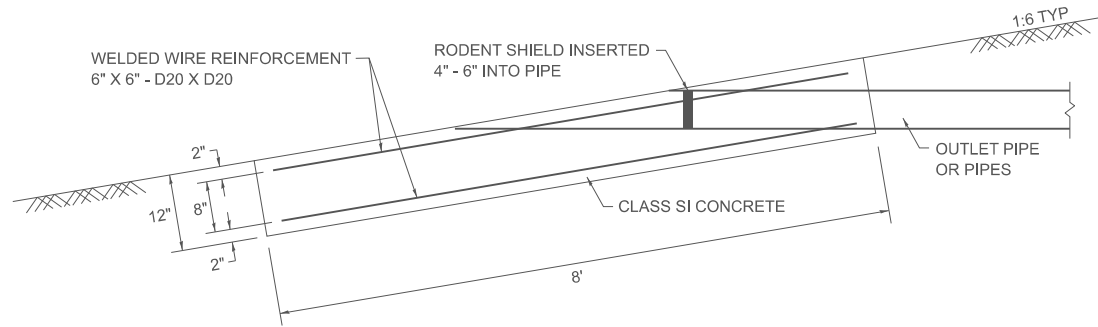
601-6

	USER NAME	= anthony.grunstad	DESIGNED	-	REVISED	-	STATE OF ILLINOIS DEPARTMENT OF TRANSPORTATION	SCALE: SHEET OF SHEETS STA. TO STA.			F.A. RTE.	SECTION	COUNTY	TOTAL SHEETS	SHEET NO.
	DRAWN	-	CHECKED	-	REVISED	-									
	PLOT SCALE	= 100,000 ' / in.	DATE	-	REVISED	-					CONTRACT NO.				
	PLOT DATE	= 10/3/23									ILLINOIS	FED. AID PROJECT			

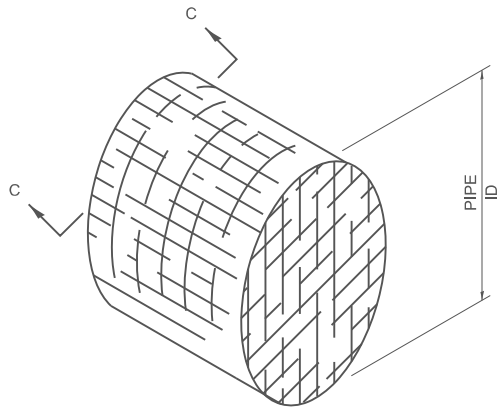
MODEL: SHT_PLAN
FILE NAME: C:\Bentley\CONNECT101\Organization-Civil\DOT_Standards\Civil\DOT_Sheets.cad



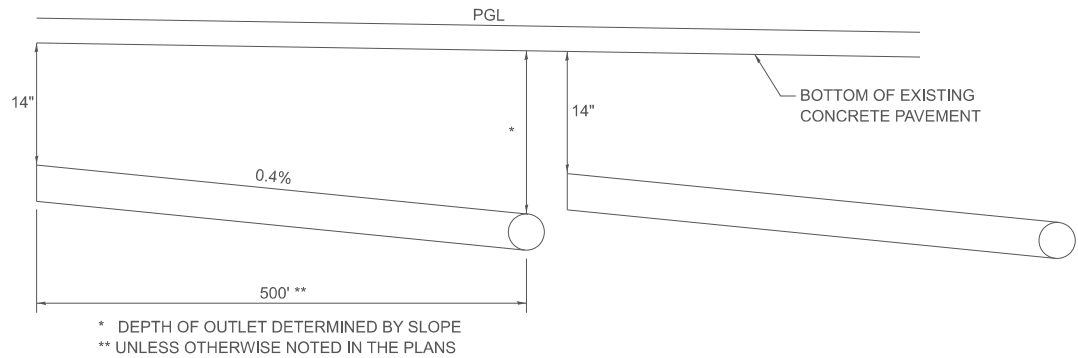
PLAN VIEW



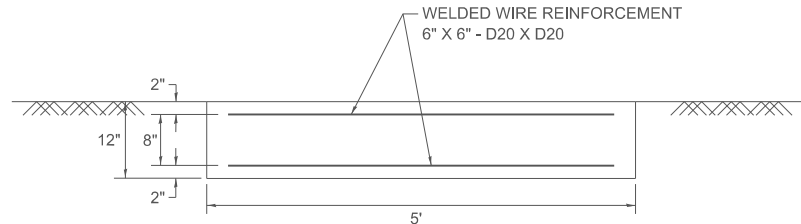
SECTION A-A



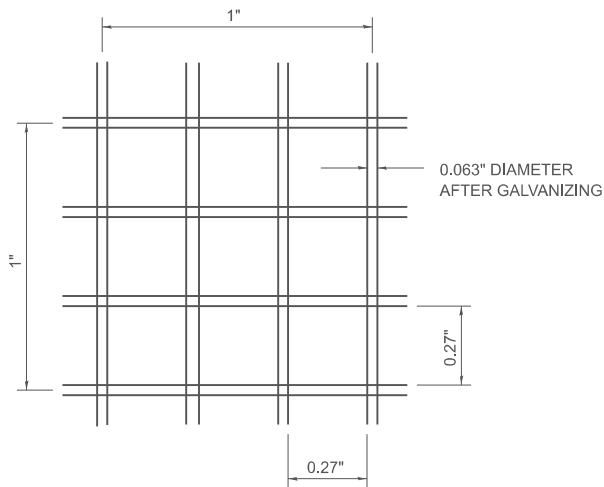
DETAIL OF RODENT SHIELD



PIPE UNDERDRAIN DETAIL
(USE WHEN PGL IS LESS THAN 0.4%)



SECTION B-B



SECTION C-C

NOTES

THE OUTLET PIPE OR PIPES SHALL BE LOCATED AS CLOSE AS POSSIBLE TO THE CENTER OF THE OUTLET PROTECTOR.

THE LAST 10' OF OUTLET PIPE SHALL BE SCHEDULE 40 PVC ACCORDING TO ARTICLE 1040.03 OF THE STANDARD SPECIFICATIONS.

THE REINFORCEMENT WIRE MAY BE CUT TO ACCOMODATE PIPE.

CUT OUTLET PIPE ON A BEVEL TO MATCH FINISHED SURFACE OF SURROUNDING PCC.

SEEDING CLASS 2 SHALL BE CONSIDERED INCLUDED IN THE COST OF PAY ITEMS.

OUTLET PROTECTOR BILL OF MATERIALS

ITEM	UNIT	QUANTITY (EACH OUTLET PROTECTOR)
CLASS SI CONCRETE (MISCELLANEOUS)	CU YD	1.5
WELDED WIRE REINFORCEMENT	SQ FT	67.5

601-7

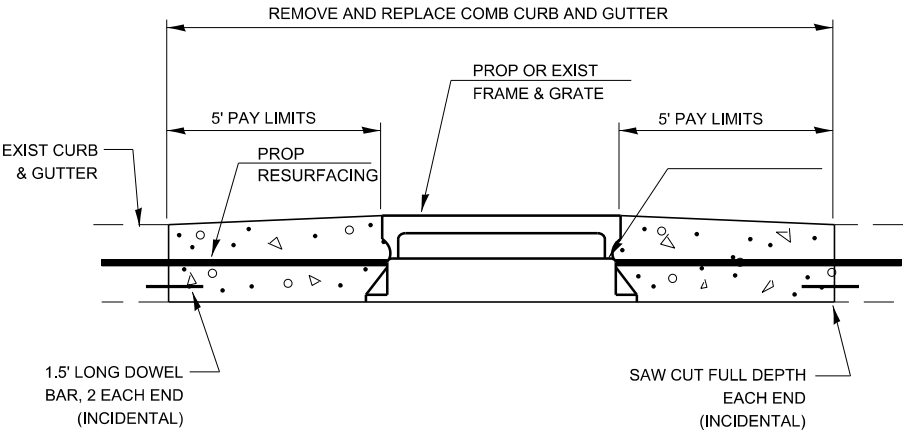
USER NAME = Eric.Thomas	DESIGNED -	REVISED -
	DRAWN -	REVISED -
	CHECKED -	REVISED -
PLOT DATE = 12/7/2022	DATE -	REVISED -

STATE OF ILLINOIS
DEPARTMENT OF TRANSPORTATION

CONCRETE HEADWALLS FOR PIPE UNDERDRAIN (SPECIAL)

SCALE: SHEET OF SHEETS STA. TO STA.

F.A. RTE.	SECTION	COUNTY	TOTAL SHEETS	SHEET NO.
CONTRACT NO.				
ILLINOIS FED. AID PROJECT				



INLET ADJUST

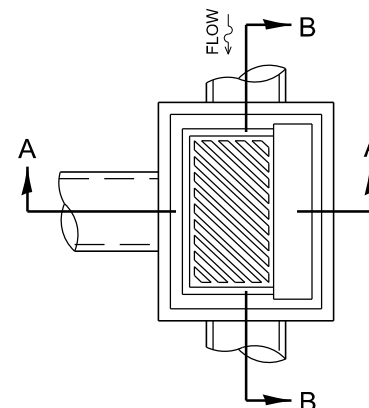
602-2

MODEL dlet 3 details
FILE Name: s:\wms\csw\hantley.com\WIDOT\Documents\DOT Offices\Director 3\Projects\Caray Details\03 Detail Revisions 2023\602-699 INCIDENTAL CONSTRUCTION.dgn

	USER NAME	= anthony.grunstad	DESIGNED	-	REVISED	-	STATE OF ILLINOIS DEPARTMENT OF TRANSPORTATION			F.A. RTE.	SECTION	COUNTY	TOTAL SHEETS	SHEET NO.
	DRAWN	-	CHECKED	-	REVISED	-								
	PLOT SCALE	= 100,000 ' / in.	DATE	-	REVISED	-				CONTRACT NO.				
	PLOT DATE	= 10/3/23								ILLINOIS FED. AID PROJECT				
										SCALE:	SHEET	OF	SHEETS	STA. TO STA.



THE HEIGHT OF THE BOX MAY BE
CONSTRUCTED 6" SHORT TO ALLOW
FOR FIELD ADJUSTMENTS.



WEIGHT OF CAST IRON FRAME & GRATE = ±530 LBS.

DETAIL OF FRAME & GRATE



SECTION A-A



THE CONTRACT UNIT PRICE EACH FOR INLET SPECIAL SHALL INCLUDE THE COST OF CONSTRUCTING THE INLET BOX. FURNISHING AND INSTALLING THE FRAME AND GRATE. THE CAST IRON STEPS, THE PRECAST FLOOR SLAB, SAND CUSHION AND REINFORCEMENT BARS.

USER NAME = anthony.grunstad	DESIGNED -	REVISED -
	DRAWN -	REVISED -
PLOT SCALE = 100,000 ' / in.	CHECKED -	REVISED -
PLOT DATE = 10/3/23	DATE -	REVISED -

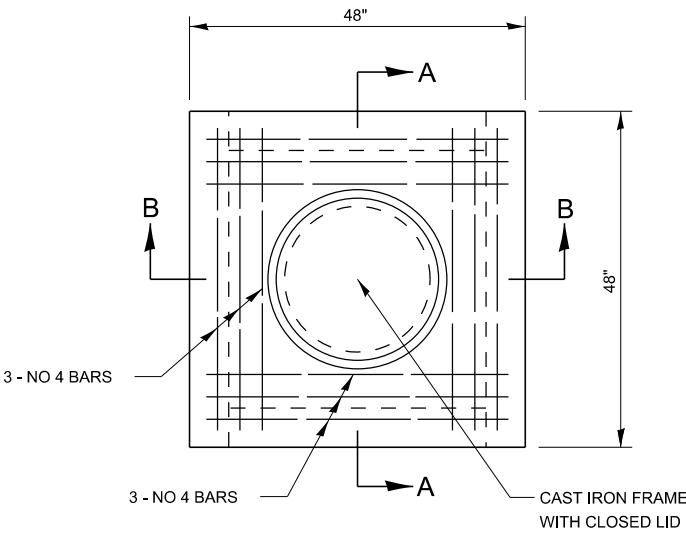
**STATE OF ILLINOIS
DEPARTMENT OF TRANSPORTATION**

INLET SPECIAL

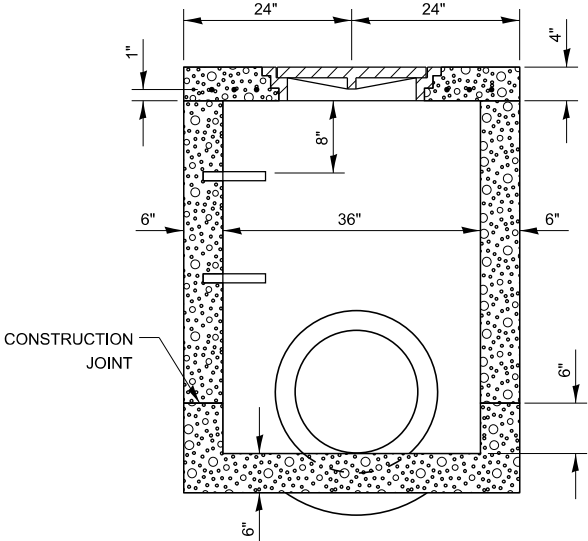
SCALE:	SHEET	OF	SHEETS	STA.	TO STA.
--------	-------	----	--------	------	---------

F.A. RTE.	SECTION	COUNTY	TOTAL SHEETS	SHEET NO.
		CONTRACT NO.		
		ILLINOIS	FED. AID PROJECT	

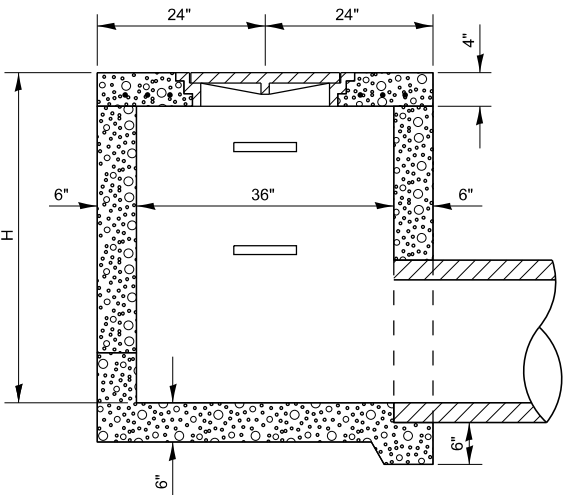
MODEL.dwg 3 details
FILE NAME: s:\work\caw.bentley.com\IN\DOT\Documents\DOT Offices\Director 3\Projects\602-699 Details\03 Detail Revisions 2023\602-699 INCIDENTAL CONSTRUCTION.dgn



PLAN

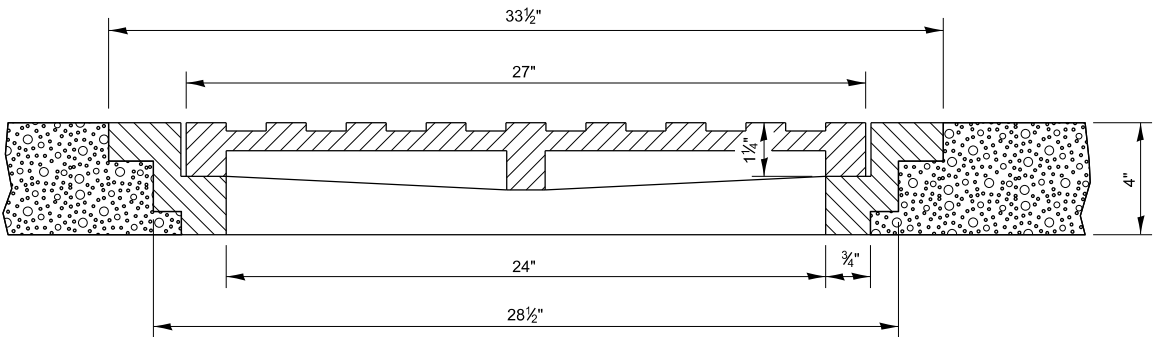


SECTION A-A



SECTION B-B

NOTES:



SECTION THRU FRAME & LID

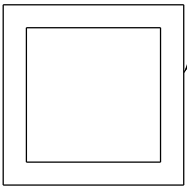
WEIGHT OF FRAME & LID, 300 LBS

MANHOLES, SPECIAL

602-6

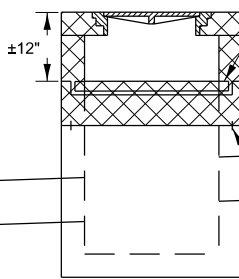
	USER NAME = anthony.grunstad	DESIGNED -	REVISED -	STATE OF ILLINOIS DEPARTMENT OF TRANSPORTATION	SCALE: SHEET OF SHEETS STA. TO STA.				F.A. RTE.	SECTION	COUNTY	TOTAL SHEETS	SHEET NO.		
		DRAWN -	REVISED -												
	PLOT SCALE = 100,000 ' / in.	CHECKED -	REVISED -												
	PLOT DATE = 10/3/23	DATE -	REVISED -												
										CONTRACT NO.					
										ILLINOIS	FED. AID PROJECT				

MODEL dlet 3 details
FILE Name: s:\wms\csw.bentley.com\WIDOT\Documents\DOT Offices\Director: 3\Projects\Caray Details\03 Detail Revisions 2023\602-699 INCIDENTAL CONSTRUCTION.dgn



SEE STANDARD 542546 FOR
FRAME PLACEMENT DETAILS

PLAN VIEW



SEE STANDARD 542546 FOR DETAILS OF
FRAME & GRATE AND PLACEMENT OF
FRAME IN CONCRETE
REMOVE 12" BELOW
PROPOSED DITCH ¥
EXPANSION TIE ANCHORS $\frac{5}{8}$ " (2 PER SIDE)

NOTES:

THIS WORK SHALL BE DONE IN ACCORDANCE WITH SECTION
602 OF THE STANDARD SPECIFICATIONS, STANDARD
542546 AND THIS DETAIL.

THE PROPOSED TOP SHALL BE CAST-IN-PLACE OR PRECAST.

THE CONCRETE SHALL BE REMOVED ACCORDING TO ARTICLE
501.05 OF THE STANDARD SPECIFICATIONS.

THIS WORK WILL BE PAID FOR AT THE CONTRACT UNIT PRICE
EACH FOR INLETS TO BE RECONSTRUCTED WITH NEW STANDARD
542546 FRAME AND GRATE WHICH PRICE SHALL INCLUDE
THE REMOVAL AND DISPOSAL OF THE EXISTING FRAME AND
GRATE & CONCRETE, FURNISHING & INSTALLING EXPANSION
TIE ANCHORS, CLASS SI CONCRETE, AND FURNISHING & INSTALLING
FRAME & GRATE.

FLUSH INLET BOX TO BE RECONSTRUCTED

WITH NEW STANDARD 542546 FRAME AND GRATE

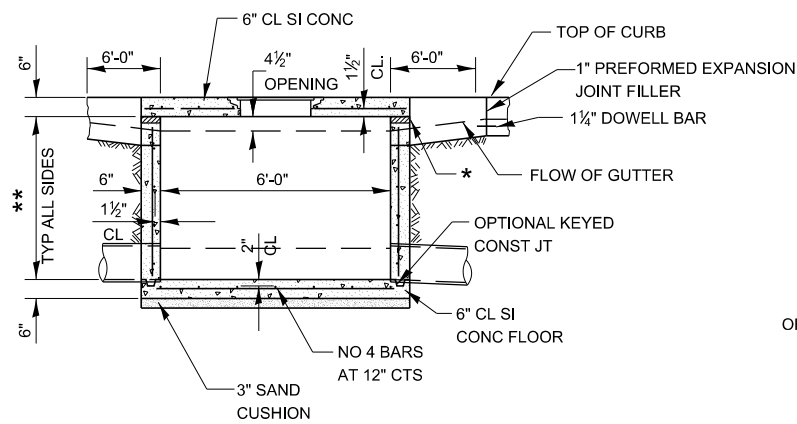
DESIGNER NOTE:

CHECK THE DIMENSIONS
ON THIS DETAIL, CHANGE
TO FIT YOUR CONDITIONS.

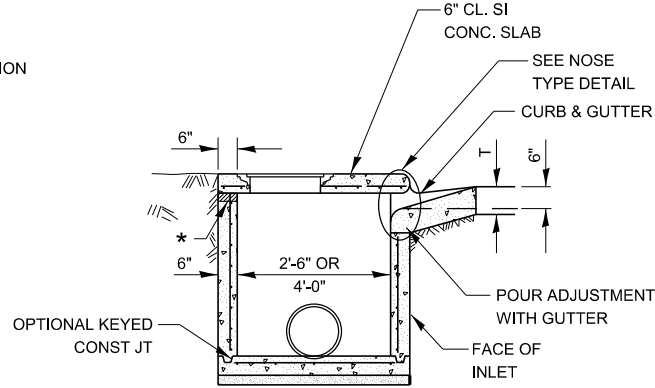
602-7

	USER NAME	= anthony.grunstad	DESIGNED	-	REVISED	-	STATE OF ILLINOIS DEPARTMENT OF TRANSPORTATION							F.A. RTE.	SECTION	COUNTY	TOTAL SHEETS	SHEET NO.		
			DRAWN	-	REVISED	-														
	PLOT SCALE	= 100,000 ' / in.	CHECKED	-	REVISED	-														
	PLOT DATE	= 10/3/23	DATE	-	REVISED	-														
SCALE:		SHEET	OF	SHEETS	STA.	TO STA.														
												ILLINOIS	FED. AID PROJECT							

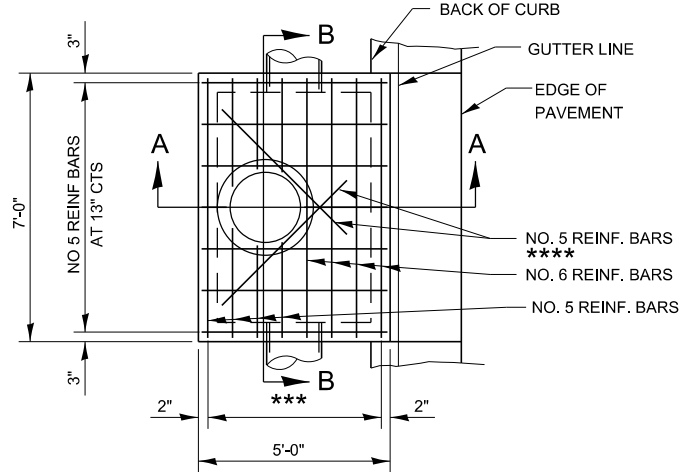
MODEL.dwg 3 details
FILE NAME: s:\w\m\c\w\h\entley.com\IN\DOT\Documents\DOT Offices\Dirlet 3\Projects-Darcy Details\03 Detail Revisions 2023\602-699 INCIDENTAL CONSTRUCTION.dgn



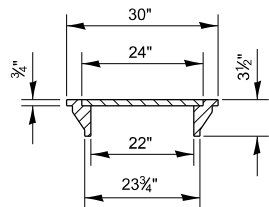
SECTION B-B



SECTION A-A



TOP VIEW



TOTAL WEIGHT 160 LBS

LIGHT WEIGHT MANHOLE CASTING

TOP SLAB REINFORCEMENT TO BE EPOXY COATED BARS.

* THE WALL ADJUSTMENTS SHALL BE MADE WITH CONCRETE BUILDING BRICKS OR CLASS SI CONCRETE.

THE HEIGHT OF THE BOX MAY BE CONSTRUCTED 6" SHORT TO ALLOW FOR FIELD ADJUSTMENTS.

** 4'-0" TO 8'-0" - NO 5 REINFORCEMENT BARS AT 12" CENTERS EW
8'-0" TO 13'-0" - NO 5 REINFORCEMENT BARS AT 10" CENTERS EW
13'-0" TO 15'-0" NO 5 REINFORCEMENT BARS AT 8" CENTERS EW

*** 7 SPAN AT 8" INLET SPECIAL 3 & 4
5 SPAN AT 7 1/2" INLET SPECIAL 5 & 6

**** 2 REBARS FOR INLET SPECIAL 3 & 4
4 REBARS FOR INLET SPECIAL 5 & 6

NOTES:

SEE STANDARD 602701 FOR DETAILS OF STEPS.

STEPS AT 12" TO 16" CENTERS.

STEPS SHALL BE OMITTED WHEN DEPTH OF INLET IS LESS THAN 5'

1" PREFORMED EXPANSION JOINTS AS SHOWN SHALL BE PROVIDED ON EACH SIDE OF INLET.

CLASS SI CONCRETE OR PRECAST CONCRETE SHALL BE USED THROUGHOUT.

THE SIDE WALLS MAY BE BUILT AS PRECAST SEGMENTAL SECTIONS.

THE INLET SHALL BE CAST-IN-PLACE OR PRECAST.

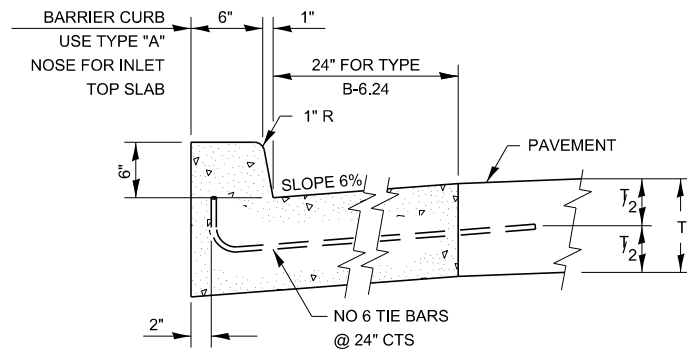
EXCEPT AS NOTED HEREIN INLET SPECIAL SHALL BE CONSTRUCTED IN ACCORDANCE WITH SECTION 602 OF THE STANDARD SPECIFICATIONS.

THE CONTRACT UNIT PRICE EACH FOR INLET SPECIAL SHALL INCLUDE THE COST OF FURNISHING AND INSTALLING THE FRAME, LID, REINFORCEMENT BARS, FLOOR AND TOP SLABS, CAST IRON STEPS (IF USED).

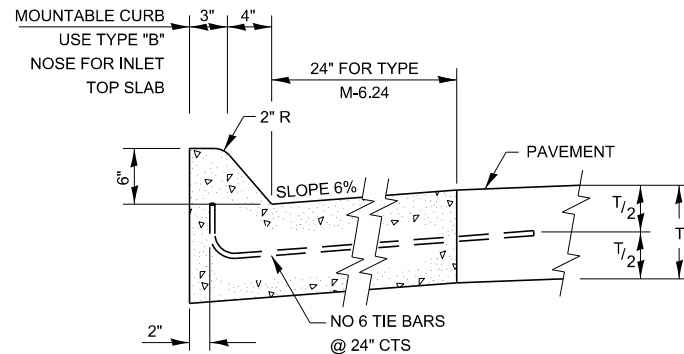
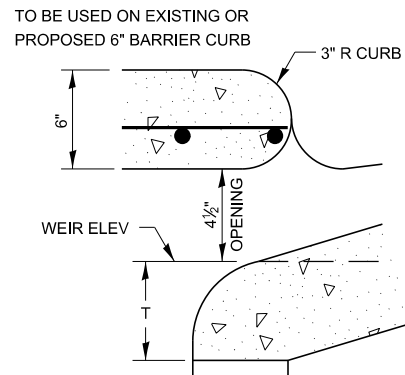
THE CURB AND GUTTER WILL BE PAID FOR SEPARATELY AND WILL BE MEASURED THROUGH THE INLET.

THE CURB AND GUTTER ADJACENT TO AND 6' ON EITHER SIDE OF THE INLET SHALL BE CONSTRUCTED AS SHOWN WITH NO ADDITIONAL COMPENSATION FOR THE TRANSITION.

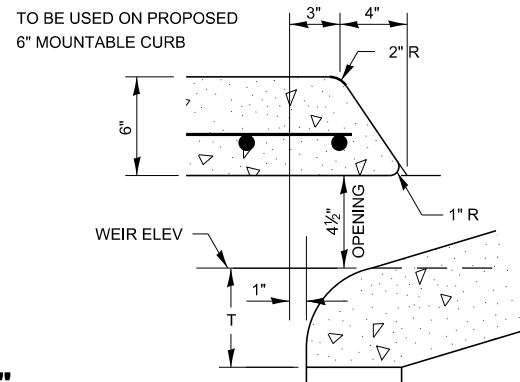
INLET SPECIAL NO. 3, 4, 5,6



TYPE "A"



TYPE "B"

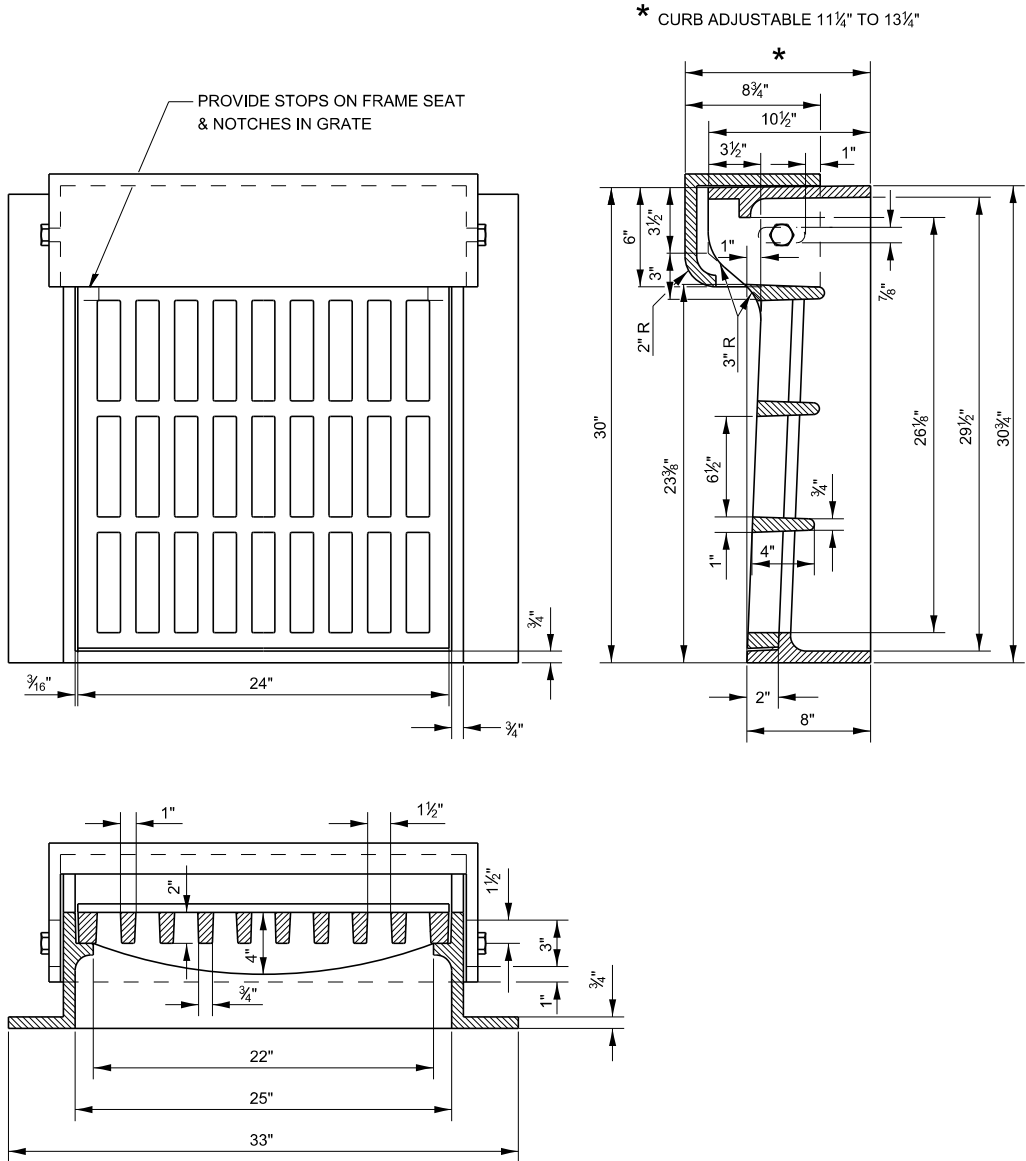


NOSE TYPE FOR INLET TOP SLAB

602-8

STATE OF ILLINOIS DEPARTMENT OF TRANSPORTATION	INLET SPECIAL NO. 3, 4, 5, 6		F.A. RTE.	SECTION	COUNTY	TOTAL SHEETS	SHEET NO.
	SCALE: SHEET OF SHEETS STA. TO STA.		CONTRACT NO.				
			ILLINOIS FED. AID PROJECT				
USER NAME = anthony.grunstad	DESIGNED -	REVISED -					
DRAWN -	REVISD -	REVISED -					
PLOT SCALE = 100,000 ' / in.	CHECKED -	REVISED -					
PLOT DATE = 10/3/23	DATE -	REVISED -					

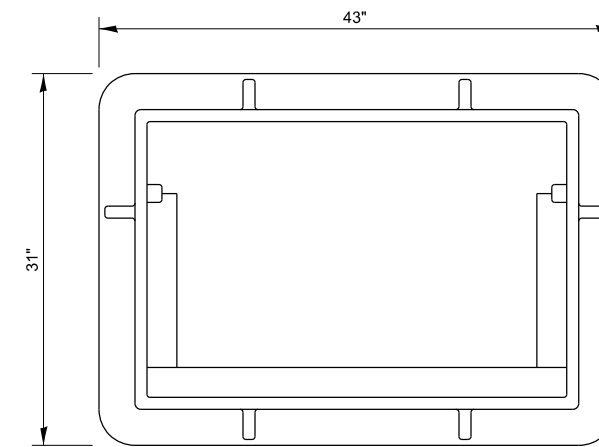
MODEL det 3 details
FILE Name: s:\w\ms-cw\autocad\dwg\dot\office\Detail\3\Projects-Corcy Details\03 Detail Revisions 2023\604-699 INCIDENTAL CONSTRUCTION.dgn



604-1

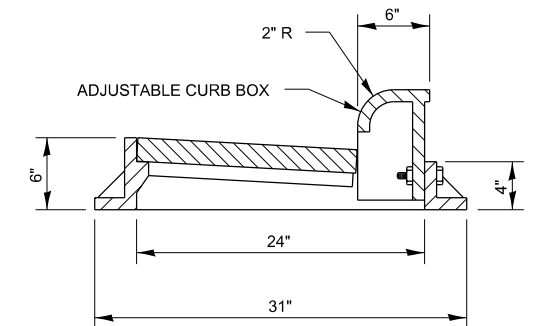
FRAME AND GRATE SPECIAL

	USER NAME	= anthony.grunstad	DESIGNED	-	REVISED	-	STATE OF ILLINOIS DEPARTMENT OF TRANSPORTATION				F.A. RTE.	SECTION	COUNTY	TOTAL SHEETS	SHEET NO.			
			DRAWN	-	REVISED	-												
	PLOT SCALE	= 100,000 ' / in.	CHECKED	-	REVISED	-					CONTRACT NO.							
	PLOT DATE	= 10/3/23	DATE	-	REVISED	-					SCALE:	SHEET	OF	SHEETS	STA.	TO STA.	ILLINOIS	FED. AID PROJECT

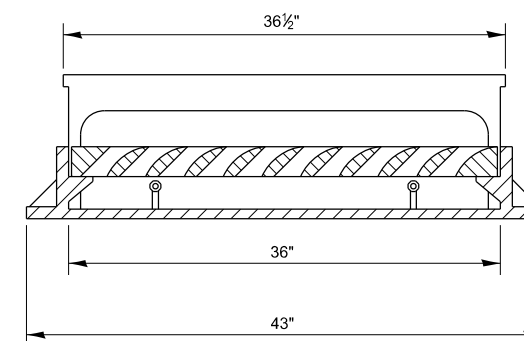


PLAN OF FRAME

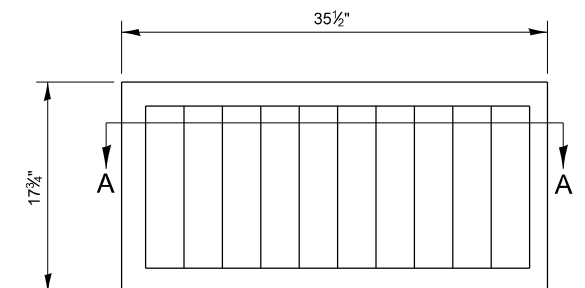
WITHOUT GRATE AND CURB BOX



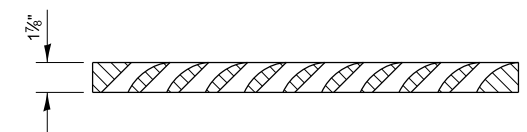
TRANSVERSE SECTION



LONGITUDINAL SECTION



PLAN OF GRATE



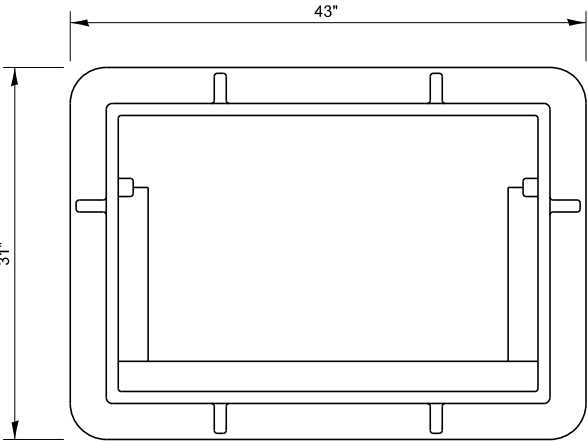
SECTION A-A

604-2

FRAME AND GRATE FOR INLET SPECIAL

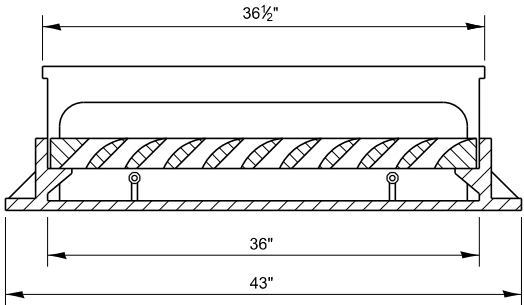
FILE NAME: DMS	USER NAME = anthony.grunstad	DESIGNED -	REVISED -	STATE OF ILLINOIS DEPARTMENT OF TRANSPORTATION								F.A. RTE.	SECTION	COUNTY	TOTAL SHEETS	SHEET NO.	
		DRAWN -	REVISED -														
	PLOT SCALE = 100,000 ' / in.	CHECKED -	REVISED -									CONTRACT NO.					
	PLOT DATE = 10/3/23	DATE -	REVISED -														
					SCALE:	SHEET	OF	SHEETS	STA.	TO STA.							
														ILLINOIS FED. AID PROJECT			

MODEL dlet 3 details
FILE Name: s:\wms\csw.bentley.com\IN\DOT\Documents\DOT_Offices\Director: 3\Projects\Caray Details\03 Detail Revisions 2023\604-699 INCIDENTAL CONSTRUCTION.dgn

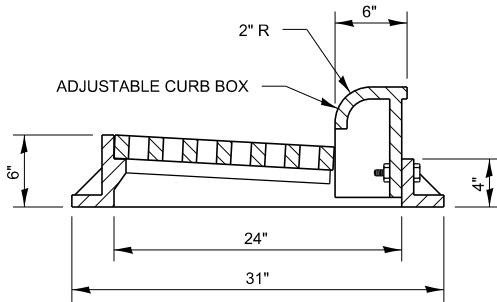


PLAN OF FRAME

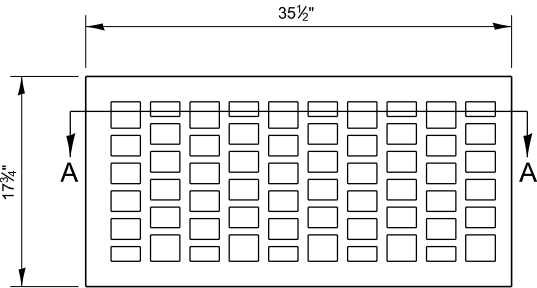
WITHOUT GRATE AND CURB BOX



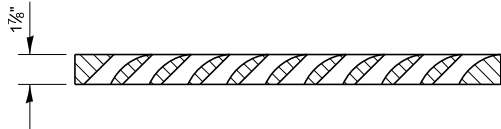
LONGITUDINAL SECTION



TRANSVERSE SECTION



PLAN OF GRATE



SECTION A-A

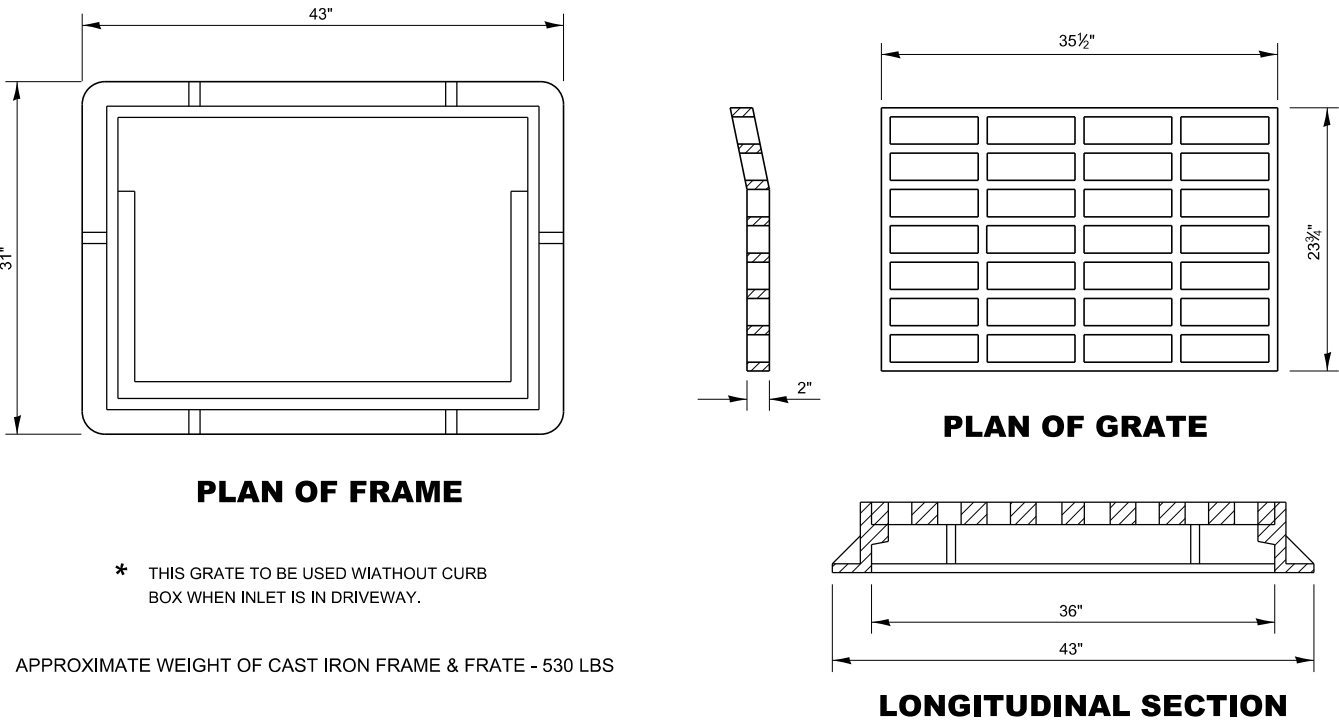
R 3067
APPROXIMATE WEIGHT - 530 LBS

FRAME AND GRATE FOR INLET SPECIAL

604-3

	USER NAME = anthony.grunstad	DESIGNED -	REVISED -	STATE OF ILLINOIS DEPARTMENT OF TRANSPORTATION	SCALE: SHEET OF SHEETS STA. TO STA.					F.A. RTE.	SECTION	COUNTY	TOTAL SHEETS	SHEET NO.
		DRAWN -	REVISED -											
	PLOT SCALE = 100,000 ' / in.	CHECKED -	REVISED -											
	PLOT DATE = 10/3/23	DATE -	REVISED -											
											CONTRACT NO.			
										ILLINOIS		FED. AID PROJECT		

MODEL: dlet 3 details
FILE: \\bentley.com\\dwg\\bentley.com\\dwg\\DOT Documents\\DOT Office\\D\\dlet 3\\Projects\\Darcy Details\\D3 Detail Revisions 2023\\604-699 INCIDENTAL CONSTRUCTION.dgn

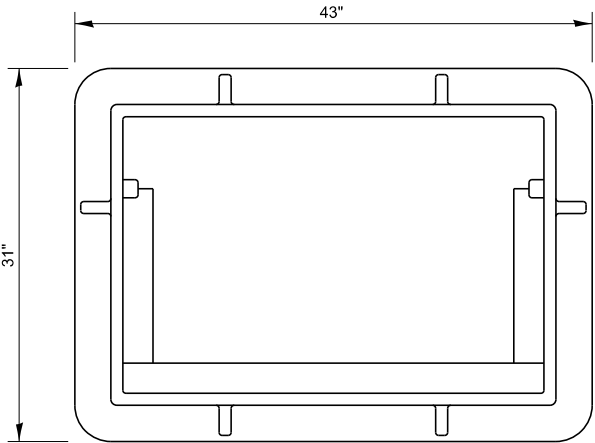


604-4

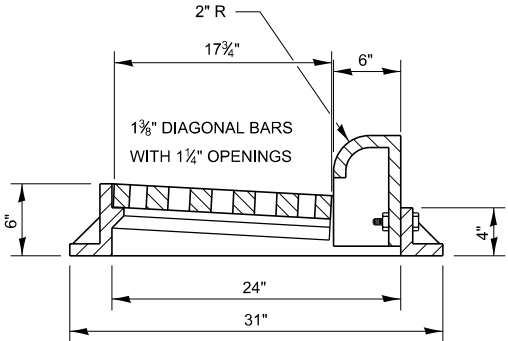
FRAME AND GRATE FOR INLET SPECIAL

	USER NAME = anthony.grunstad	DESIGNED -	REVISED -	STATE OF ILLINOIS DEPARTMENT OF TRANSPORTATION				F.A. RTE.	SECTION	COUNTY	TOTAL SHEETS	SHEET NO.
		DRAWN -	REVISED -									
	PLOT SCALE = 100,000 ' / in.	CHECKED -	REVISED -									
	PLOT DATE = 10/3/23	DATE -	REVISED -		SCALE: SHEET OF SHEETS STA. TO STA.			CONTRACT NO.				
								ILLINOIS	FED. AID PROJECT			

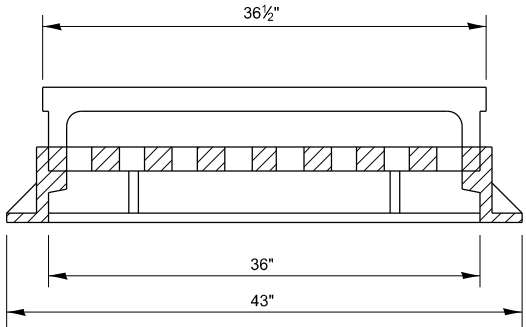
MODEL dlet 3 details
FILE Name: s:\w\ms-cw\hantley.com\WIDOT\Documents\DOT Offices\Dirlet 3\Projects-Carcy Details\03 Detail Revisions 2023\604-699 INCIDENTAL CONSTRUCTION.dgn



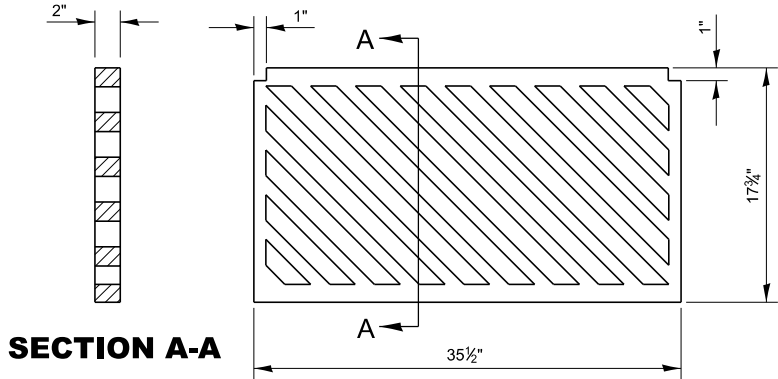
PLAN OF FRAME
WITHOUT GRATE AND CURB BOX



TRANSVERSE SECTION



LONGITUDINAL SECTION



SECTION A-A

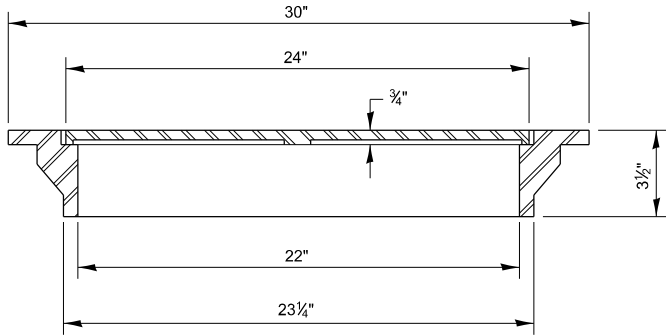
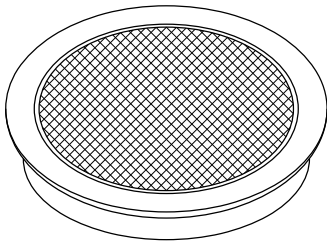
PLAN OF GRATE

FRAME AND GRATE FOR INLET SPECIAL

604-5

	USER NAME = anthony.grunstad	DESIGNED -	REVISED -	STATE OF ILLINOIS DEPARTMENT OF TRANSPORTATION	SCALE: SHEET OF SHEETS STA. TO STA.					F.A. RTE.	SECTION	COUNTY	TOTAL SHEETS	SHEET NO.
		DRAWN -	REVISED -											
	PLOT SCALE = 100,000 ' / in.	CHECKED -	REVISED -											
	PLOT DATE = 10/3/23	DATE -	REVISED -											
	CONTRACT NO.											ILLINOIS FED. AID PROJECT		

MODEL: dlet_3_details
FILE: \\bentley.com\\P\\DOT\\Documents\\DOT_Offices\\D\\dlet_3\\Projects\\Darcy_Details\\D3_Details\\CONSTRUCTION.dgn



TOTAL WEIGHT: 160 LBS

NOTE:

THE CLOSED LID MAY BE MADE OF EITHER GRAY IRON OR DUCTILE IRON.
CONFORMING TO THE STANDARD SPECIFICATIONS.

DUCTILE IRON CASTING SHALL BE GRADE 60-40-18 AND SHALL BE PROOF
LOADED IN ACCORDANCE WITH FEDERAL SPECIFICATIONS RR-F-621b,
SECTION 3.8.

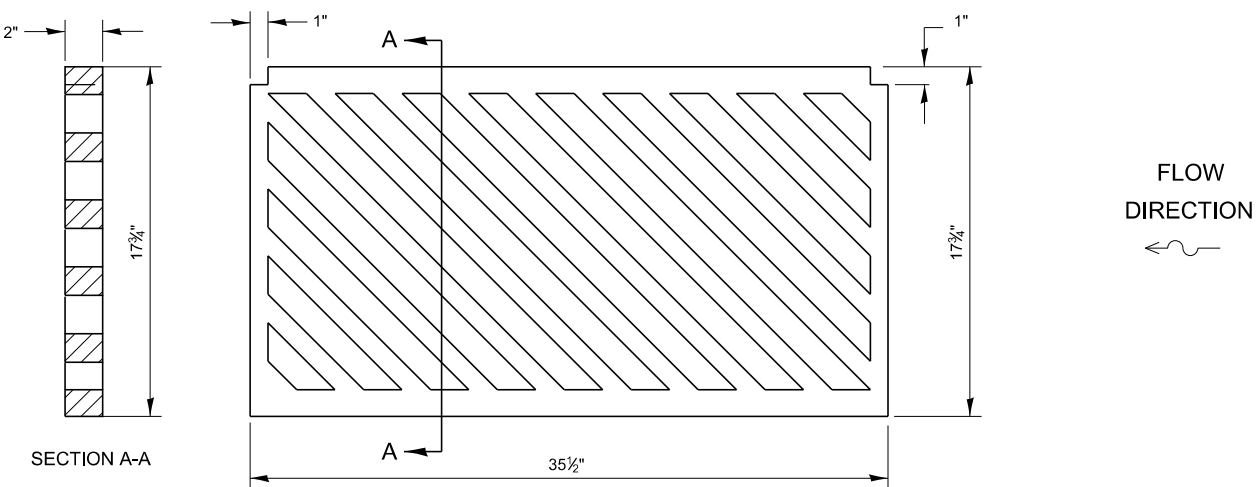
THE PROOF LOAD SHALL BE 25,000 LBS ON A 9" x 9" CAST BLOCK.

SPECIAL FRAME CLOSED LID

604-6

	USER NAME	= anthony.grunstad	DESIGNED	-	REVISED	-	STATE OF ILLINOIS DEPARTMENT OF TRANSPORTATION						F.A. RTE.	SECTION	COUNTY	TOTAL SHEETS	SHEET NO.	
			DRAWN	-	REVISED	-												
	PLOT SCALE	= 100,000 ' / in.	CHECKED	-	REVISED	-							CONTRACT NO.					
	PLOT DATE	= 10/3/23	DATE	-	REVISED	-												
	SCALE:		SHEET	OF	SHEETS	STA.		TO STA.										
																		ILLINOIS

MODEL dlet 3 details
FILE Name: s:\wms\csw\hantley.com\NWDOT\Documents\DOT Offices\Director: 3\Projects\Carcy Details\03 Detail Revisions 2023\604-699 INCIDENTAL CONSTRUCTION.dgn



PLAN VIEW OF CAST IRON GRATE

1 3/8" DIAGONAL BARS WITH 1 1/4" OPENINGS

NOTES

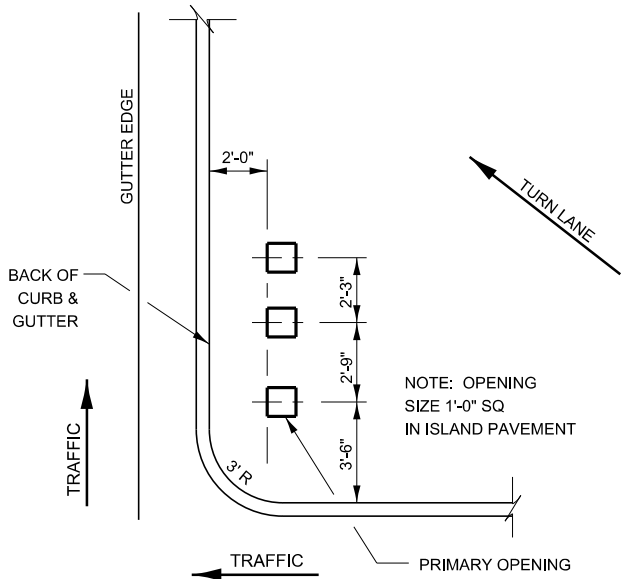
- THE CONTRACTOR SHALL FIELD CHECK THE SIZE OF THE EXISTING GRATE BEFORE ORDERING THE NEW GRATE TO INSURE THE CORRECT SIZE.
- THIS WORK SHALL BE PAID FOR AT THE CONTRACT UNIT PRICE PER EACH FOR GRATE SPECIAL.
- THE EXISTING GRATES ARE TO BE SALVAGED AND TO BECOME THE PROPERTY OF THE

GRATE SPECIAL

604-7

	USER NAME = anthony.grunstad	DESIGNED -	REVISED -	STATE OF ILLINOIS DEPARTMENT OF TRANSPORTATION				F.A. RTE.	SECTION	COUNTY	TOTAL SHEETS	SHEET NO.
		DRAWN -	REVISED -									
	PLOT SCALE = 100,000 ' / in.	CHECKED -	REVISED -									
	PLOT DATE = 10/3/23	DATE -	REVISED -									
					SCALE:	SHEET	OF	SHEETS	STA.	TO STA.	CONTRACT NO.	
											ILLINOIS	FED. AID PROJECT

MODEL dlet 3 details
FILE Name: s:\wms\caw\hantley.com\IN\DOT\Documents\DOT Offices\Director: 3\Projects\Caray Details\03 Detail Revisions 2023\606-699 INCIDENTAL CONSTRUCTION.dgn

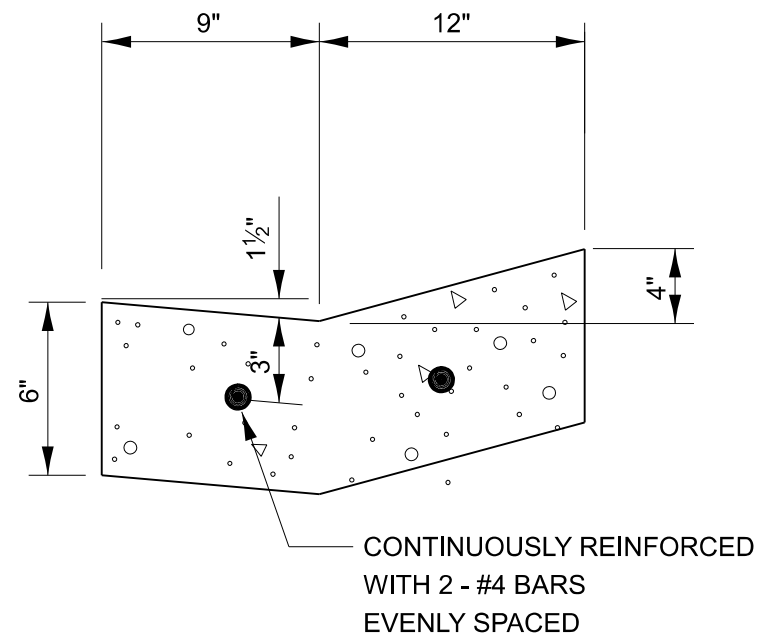


ISLAND SIGN POST SPACING DETAIL

NOTE: THE ENGINEER SHALL DETERMINE THE NUMBER OF OPENINGS REQUIRED.

606-2

	USER NAME	= anthony.grunstad	DESIGNED	-	REVISED	-	STATE OF ILLINOIS DEPARTMENT OF TRANSPORTATION	SCALE: SHEET OF SHEETS STA. TO STA.			F.A. RTE.	SECTION	COUNTY	TOTAL SHEETS	SHEET NO.
			DRAWN	-	REVISED	-									
	PLOT SCALE	= 100,000 ' / in.	CHECKED	-	REVISED	-					CONTRACT NO.				
	PLOT DATE	= 10/3/23	DATE	-	REVISED	-					ILLINOIS FED. AID PROJECT				



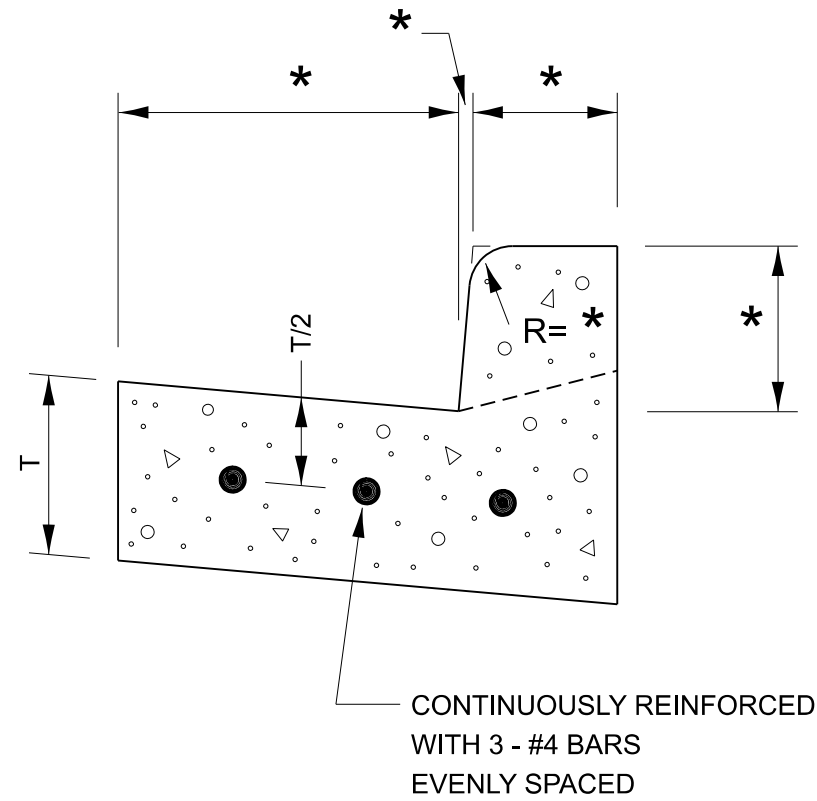
REINFORCEMENT DETAIL FOR TYPE V GUTTER

606-3

DESIGNER NOTE:

TO BE USED WHEN CURB AND GUTTER
CANNOT BE TIED TO THE EXISTING
PAVEMENT - HMA PAVEMENTS OR
PCC IN POOR CONDITION

* VARIES - SEE STANDARD 606001



REINFORCEMENT DETAIL

FOR

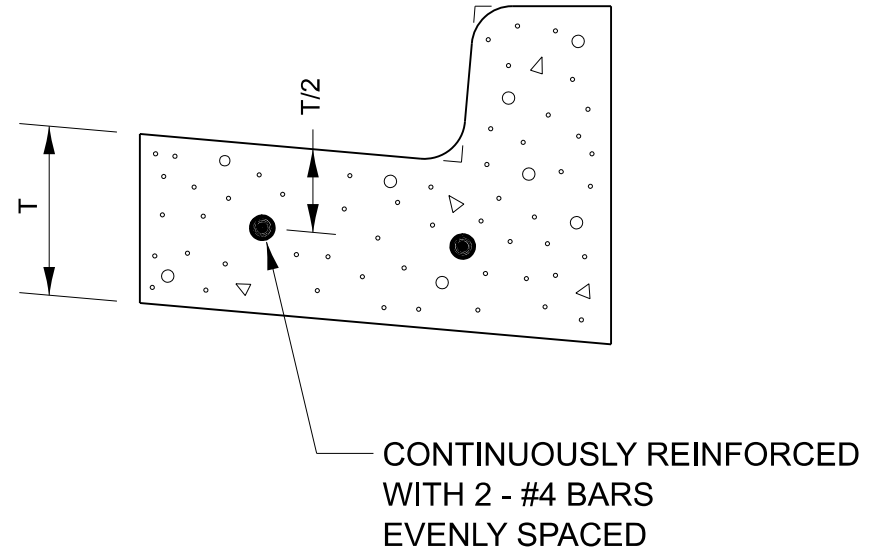
COMBINATION CONCRETE

CURB AND GUTTER

606-4

DESIGNER NOTE:

TO BE USED WHEN CURB AND GUTTER
CANNOT BE TIED TO THE EXISTING
PAVEMENT - HMA PAVEMENTS OR
PCC IN POOR CONDITION

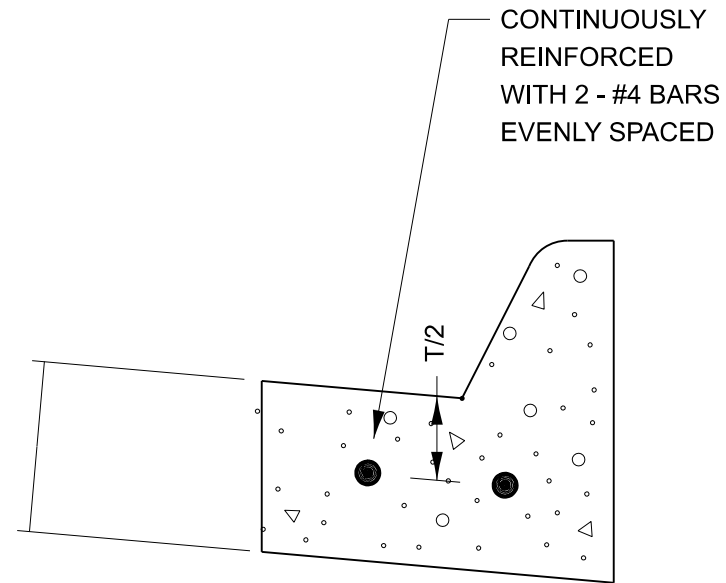


REINFORCEMENT DETAIL
FOR
COMBINATION CONCRETE
CURB AND GUTTER
TYPE B-6.18

606-5

DESIGNER NOTE:

TO BE USED WHEN CURB AND GUTTER
CANNOT BE TIED TO THE EXISTING
PAVEMENT - HMA PAVEMENTS OR
PCC IN POOR CONDITION

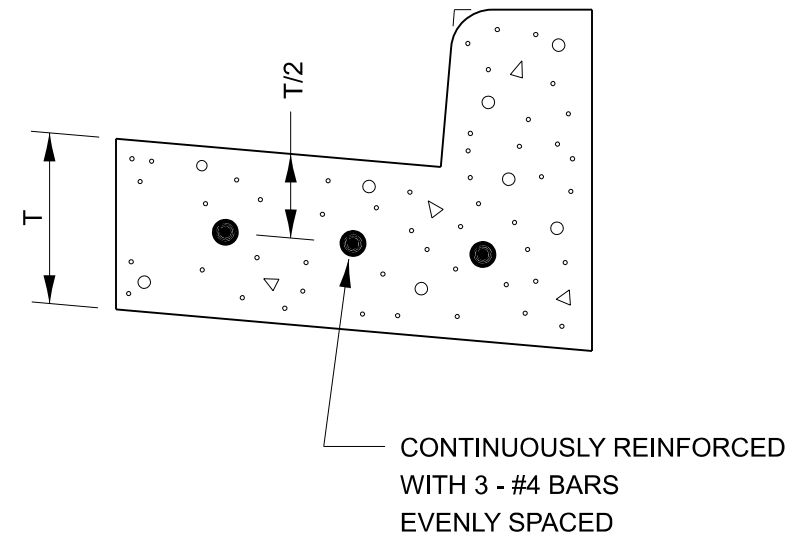


COMBINATION CONCRETE CURB AND GUTTER TYPE M-4.06

606-6

DESIGNER NOTE:

TO BE USED WHEN CURB AND GUTTER
CANNOT BE TIED TO THE EXISTING
PAVEMENT - HMA PAVEMENTS OR
PCC IN POOR CONDITION



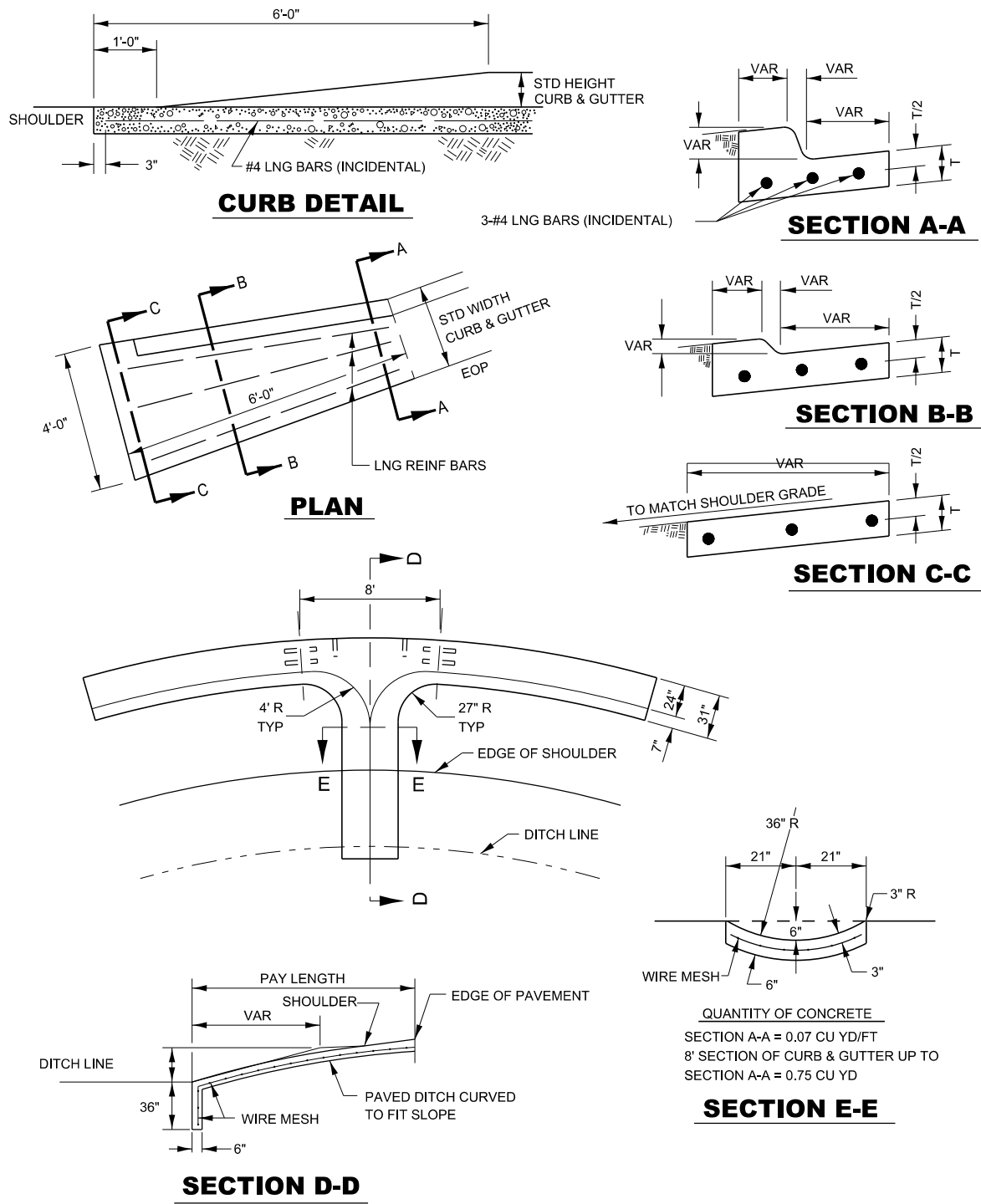
**REINFORCEMENT DETAIL
FOR
COMBINATION CONCRETE
CURB AND GUTTER
TYPE B-6.24**

606-7

DESIGNER NOTE:

TO BE USED WHEN CURB AND GUTTER
CANNOT BE TIED TO THE EXISTING
PAVEMENT - HMA PAVEMENTS OR
PCC IN POOR CONDITION

MODEL: dlet 3 details
FILE: \\bentley.com\pub\dwg\documents\DOT Offices\Director 3\Projects\Carrey Details\03 Detail Revisions 2023\606-899 INCIDENTAL CONSTRUCTION.dgn



NOTE:

CLASS SI CONCRETE SHALL BE USED THROUGHOUT. CURB AND GUTTER OUTLET SHALL BE TIED TO PAVEMENT SLAB WITH 2 TIE BARS, 30" LONG - 30" CENTERS. OUTLET SHALL BE TIED TO CURB AND GUTTER AT CONTRACTION JOINTS AS SHOWN. GUTTER OUTLET AND PAVED DITCH SHALL BE REINFORCED WITH WIRE MESH HAVING A WEIGHT OF AT LEAST 58 LBS/SQ FT COST TO BE INCLUDED IN THE UNIT PRICE PER CU YD FOR CLASS SI CONCRETE (OUTLET).

CURB & GUTTER OUTLET, SPECIAL 606-8

	USER NAME = anthony.grunstad	DESIGNED -	REVISED -	STATE OF ILLINOIS DEPARTMENT OF TRANSPORTATION	SCALE: SHEET OF SHEETS STA. TO STA.			F.A. RTE.	SECTION	COUNTY	TOTAL SHEETS	SHEET NO.
		DRAWN -	REVISED -									
	PLOT SCALE = 100,000 ' / in.	CHECKED -	REVISED -							CONTRACT NO.		
	PLOT DATE = 10/3/23	DATE -	REVISED -						ILLINOIS	FED. AID PROJECT		

MODEL.dwg 3 details
FILE NAME: s:\wms\csw\hantley.com\IN\DOT\Documents\DOT Offices\Director 3\Projects\Caray Details\03 Detail Revisions 2023\606-699 INCIDENTAL CONSTRUCTION.dgn

CONCRETE CURB AND GUTTER SHALL BE CONSTRUCTED IN ACCORDANCE WITH SECTION 606 OF THE STANDARD SPECIFICATIONS, SUPPLEMENTAL SPECIFICATIONS, STANDARD 606001 AND THIS DRAWING.

CLASS SI CONCRETE SHALL BE USED THROUGHOUT. A HOLE 1½" IN DIA AND 9" DEEP SHALL BE DRILLED IN THE EXISTING CONCRETE CURB AS SHOWN. A 1¼" x 18" SMOOTH DOWEL BAR SHALL BE GROUTED IN THE HOLE LONGITUDINALLY.

JOINTS OF A TYPE SIMILAR TO THAT IN THE UNDERLYING PAVEMENT (EXPANSION OR CONTRACTION) SHALL BE INSTALLED IN THE CONCRETE CURB IN ALIGNMENT WITH THE JOINTS IN THE PAVEMENT.

INLETS ARE NOT TO BE INCLUDED IN THE MEASUREMENT FOR CURB AND GUTTER REPLACEMENT.

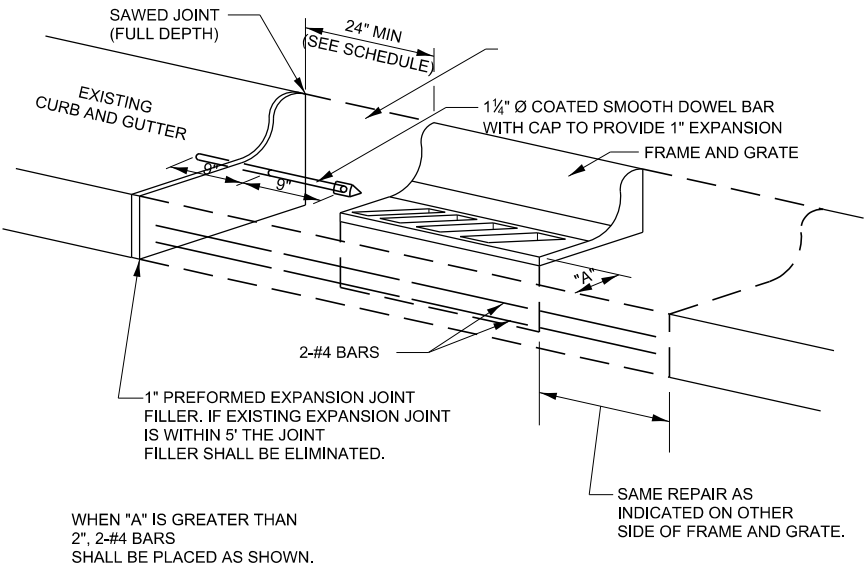
THE PROPOSED CONFIGURATION OF THE CURB AND GUTTER SHALL MATCH THAT REMOVED.

THE CONCRETE REQUIRED BETWEEN THE EDGE OF PAVEMENT AND FRAME AND GRATE SHALL BE CONSIDERED INCLUDED IN THE COST OF THE CURB AND GUTTER.

THE LOCATION OF THE DOWEL BAR SHALL BE DETERMINED BY THE ENGINEER.

THE COST OF ALL MATERIALS AND LABOR REQUIRED TO INSTALL THE JOINTS AND BARS IN THE CURBS SHALL BE INCLUDED IN THE CONTRACT UNIT PRICE PER FOOT FOR COMBINATION CURB AND GUTTER.

ALL EXISTING TIE BARS IN EDGE OF PAVEMENT SLAB THRU REPLACEMENT AREA SHALL BE CUT OFF.



DETAILS FOR CURB & GUTTER REPLACEMENT AT INLET

606-9

	USER NAME	= anthony.grunstad	DESIGNED	-	REVISED	-	STATE OF ILLINOIS DEPARTMENT OF TRANSPORTATION				F.A. RTE.	SECTION	COUNTY	TOTAL SHEETS	SHEET NO.
			DRAWN	-	REVISED	-									
	PLOT SCALE	= 100,000 ' / in.	CHECKED	-	REVISED	-									
	PLOT DATE	= 10/3/23	DATE	-	REVISED	-									
											SCALE:	SHEET	OF	SHEETS	STA.
												CONTRACT NO.			
												ILLINOIS FED. AID PROJECT			

MODEL: dlet 3 details
FILE: \\nrcs-pw\mrcs-cw\hertley.com\IN\DOT\Documents\DOT Offices\Director: 3\Projects\3-Darcy Details\03 Detail Revisions 2023\606-699 INCIDENTAL CONSTRUCTION.dgn

CONCRETE CURB AND GUTTER SHALL BE CONSTRUCTED IN ACCORDANCE WITH SECTION 606 OF THE STANDARD SPECIFICATIONS, SUPPLEMENTAL SPECIFICATIONS, STANDARD 606001 AND THIS DRAWING.

CLASS SI CONCRETE SHALL BE USED THROUGHOUT. A HOLE 1½" IN DIA. AND 9" DEEP SHALL BE DRILLED IN THE EXISTING CONCRETE CURB AS SHOWN. A 1¼"x18" SMOOTH DOWEL BAR SHALL BE GROUTED IN THE HOLE LONGITUDINALLY.

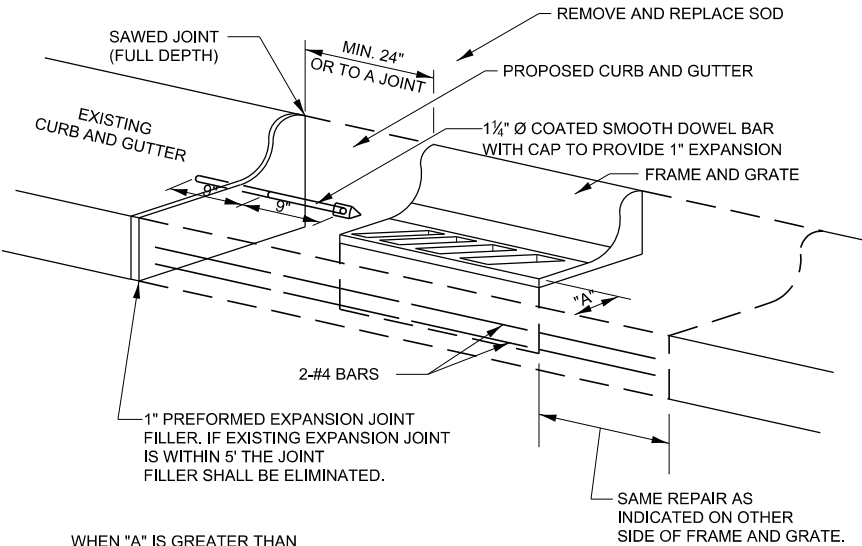
JOINTS OF A TYPE SIMILAR TO THAT IN THE UNDERLYING PAVEMENT (EXPANSION OR CONTRACTION) SHALL BE INSTALLED IN THE CONCRETE CURB IN ALIGNMENT WITH THE JOINTS IN THE PAVEMENT.

THE PROPOSED CONFIGURATION OF THE CURB AND GUTTER SHALL MATCH THE REMOVED.

THE LOCATION OF THE DOWEL BAR SHALL BE DETERMINED BY THE ENGINEER.

ALL EXISTING TIE BARS IN EDGE OF PAVEMENT SLAB THRU REPLACEMENT AREA SHALL BE CUT OFF.

THE WORK SHALL BE DONE IN ACCORDANCE WITH SECTION 602 OF THE STANDARD SPECIFICATIONS AND INCLUDES THE REMOVAL AND REPLACEMENT OF SOD, CONCRETE PAVEMENT AND/OR CURB AND GUTTER ADJACENT TO CATCH BASINS OR INLETS TO BE ADJUSTED OR RECONSTRUCTED AND SHALL BE INCLUDED IN THE PAY ITEM OF CATCH BASINS OR INLETS TO BE ADJUSTED OR RECONSTRUCTED AS SPECIFIED.

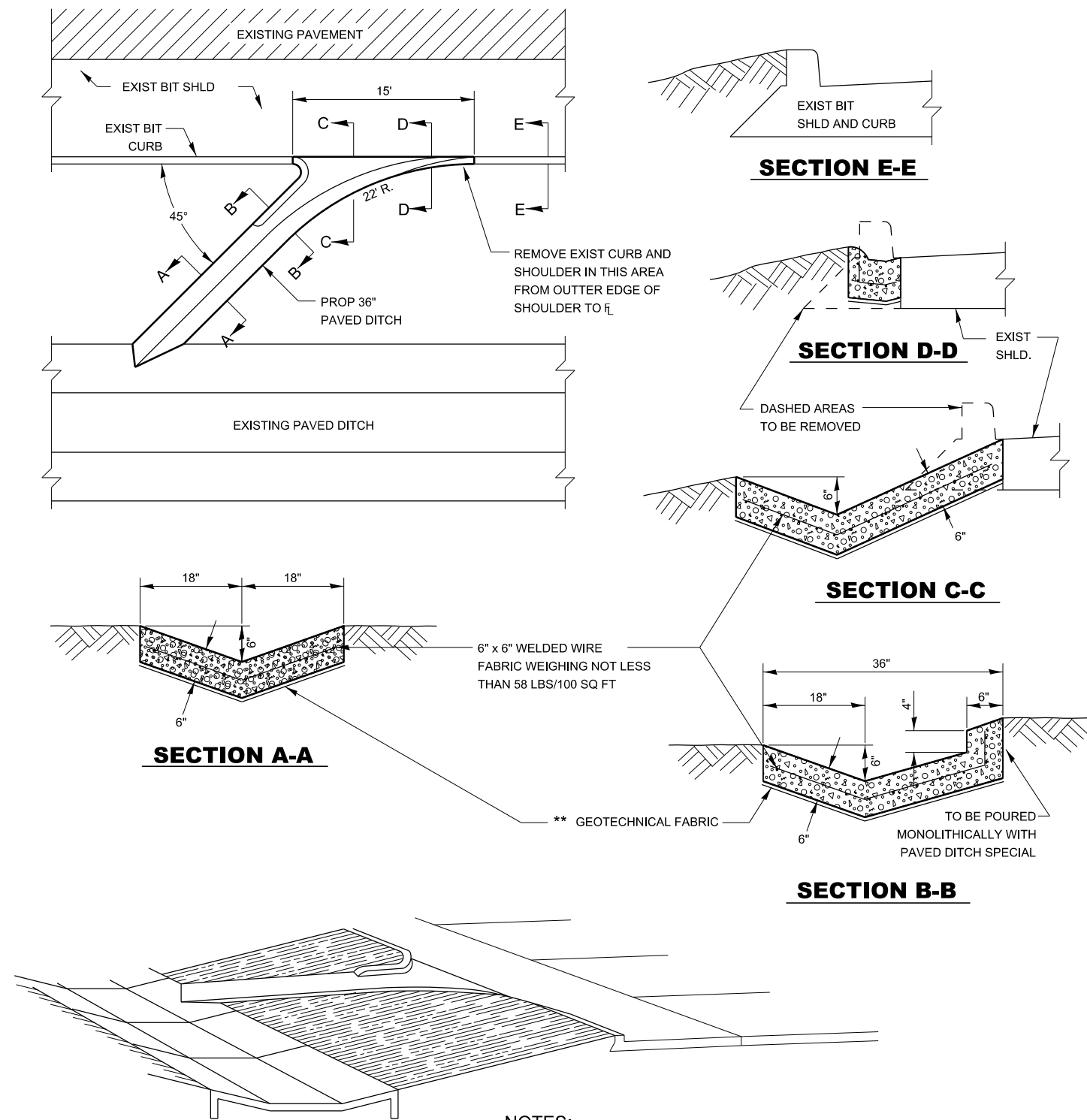


WHEN "A" IS GREATER THAN 2", 2-#4 BARS SHALL BE PLACED AS SHOWN.

DETAILS FOR CURB & GUTTER REPLACEMENT
CATCH BASIN OR INLETS TO BE
ADJUSTED OR RECONSTRUCTED

606-10

	USER NAME	= anthony.grunstad	DESIGNED	-	REVISED	-	STATE OF ILLINOIS DEPARTMENT OF TRANSPORTATION				F.A. RTE.	SECTION	COUNTY	TOTAL SHEETS	SHEET NO.
			DRAWN	-	REVISED	-									
	PLOT SCALE	= 100,000 ' / in.	CHECKED	-	REVISED	-									
	PLOT DATE	= 10/3/23	DATE	-	REVISED	-									
											SCALE:	SHEET	OF	SHEETS	STA.
												CONTRACT NO.			
												ILLINOIS FED. AID PROJECT			

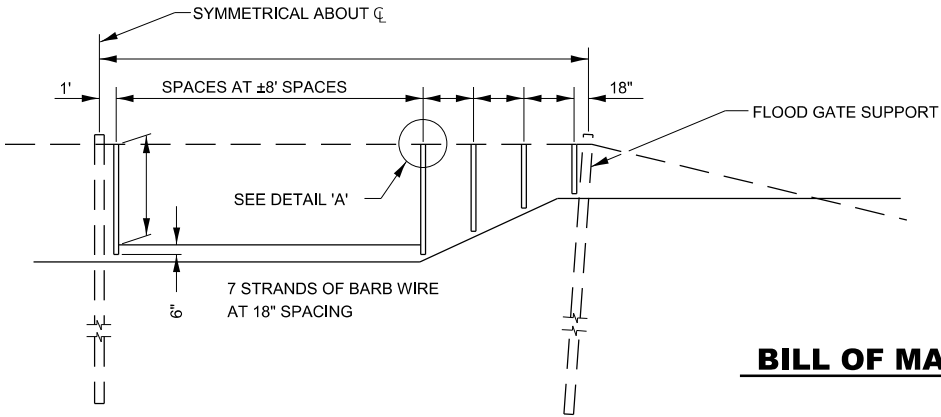


PAVED DITCH, SPECIAL

606-11

FILE NAME: DMS	USER NAME = anthony.grunstad	DESIGNED -	REVISED -	STATE OF ILLINOIS DEPARTMENT OF TRANSPORTATION						F.A. RTE.	SECTION	COUNTY	TOTAL SHEETS	SHEET NO.
		DRAWN -	REVISED -											
	PLOT SCALE = 100,000 ' / in.	CHECKED -	REVISED -							CONTRACT NO.				
	PLOT DATE = 10/3/23	DATE -	REVISED -											
					SCALE:	SHEET	OF	SHEETS	STA.	TO	STA.			

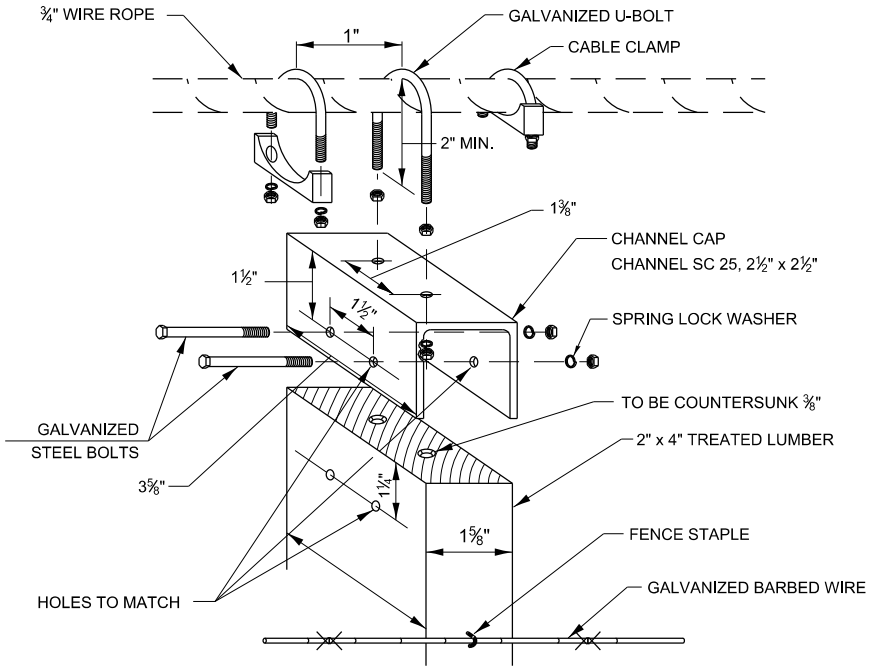
MODEL dlet 3 details
FILE Name: s:\wms\csw\hantley.com\WIDOT\Documents\DOT Offices\Dirlet 3\Projects-Darcy Details\03 Detail Revisions 2023\607-699 INCIDENTAL CONSTRUCTION.dgn



NOTE:
THE ITEMS LISTED IN THE BILL OF MATERIALS
SHALL BE THE COST OF THE FLOOD GATE COMPLETE.

BILL OF MATERIALS

QUANTITY	UNIT	ITEM
	FT	2"x4" TREATED LUMBER
	FT	GALVANIZED BARBED WIRE
	FT	SPECIAL STEEL CHANNEL SC 25, 2½"x2½"
EACH		⅜"x3" GALVANIZED STEEL BOLTS AND WASHERS
EACH		⅜"x2" GALVANIZED STEEL U-BOLTS
EACH		GALVANIZED CABLE CLAMPS
LBS		GALVANIZED FENCE STAPLES



DETAIL 'A'

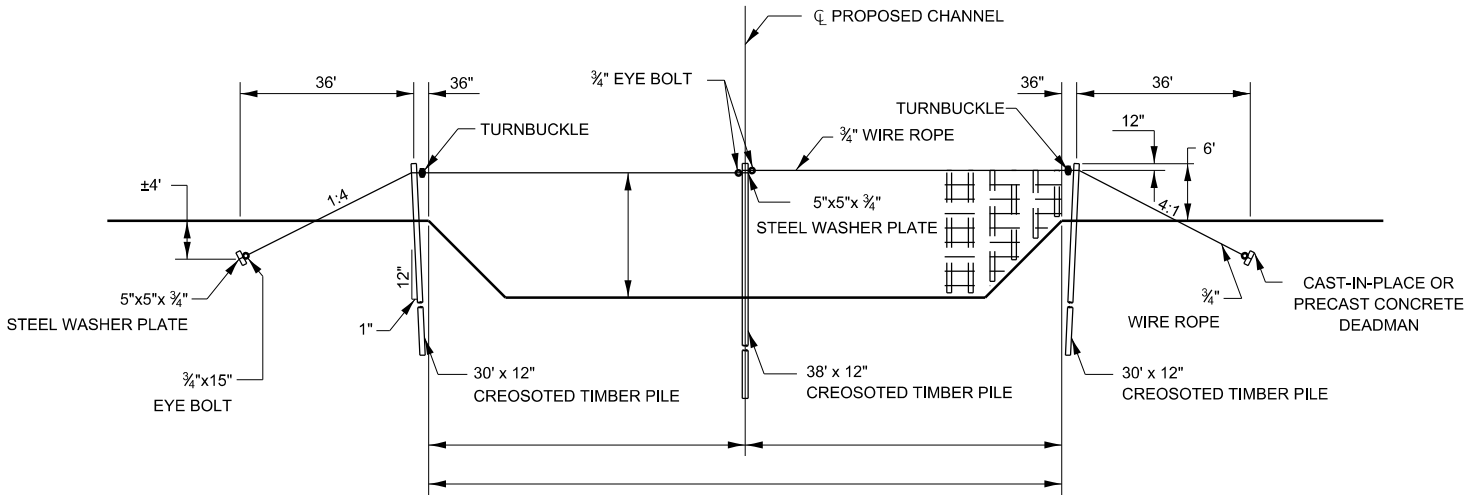
EXPLODED VIEW OF FLOOD GATE TO CABLE

DETAIL OF FLOOD GATE

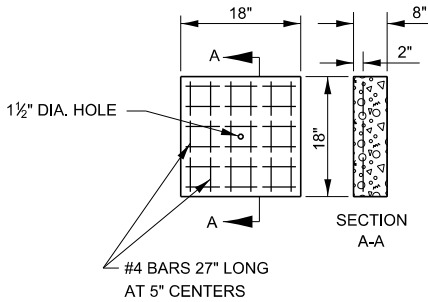
607-1

	USER NAME = anthony.grunstad	DESIGNED -	REVISED -	STATE OF ILLINOIS DEPARTMENT OF TRANSPORTATION	SCALE: SHEET OF SHEETS STA. TO STA.					F.A. RTE.	SECTION	COUNTY	TOTAL SHEETS	SHEET NO.
		DRAWN -	REVISED -											
	PLOT SCALE = 100,000 ' / in.	CHECKED -	REVISED -											
	PLOT DATE = 10/3/23	DATE -	REVISED -											
										ILLINOIS	FED. AID PROJECT			

MODEL.dgn 3 details
FILE NAME: s:\wms\caw\hantley.com\IN\DOT\Documents\DOT Offices\Director 3\Projects\3-Darcy Details\03 Detail Revisions 2023\607-699 INCIDENTAL CONSTRUCTION.dgn

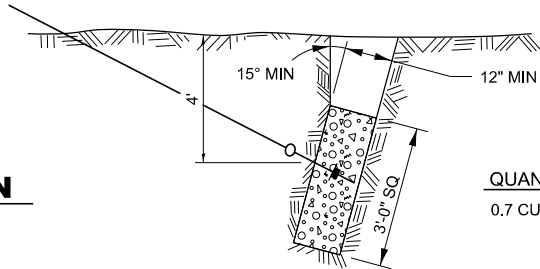


NOTE:
THE ITEMS LISTED IN THE BILL OF MATERIALS
SHALL BE INCIDENTAL TO THE COST OF THE
FLOOD GATE SUPPORT COMPLETE.



DETAIL OF PRECAST CONCRETE DEADMAN

QUANTITIES FOR 2 DEADMEN
0.3 CU YD CLASS SI CONCRETE
36 LBS REINFORCEMENT BARS



QUANTITIES FOR 2 DEADMEN
0.7 CU YD CLASS SI CONCRETE

DETAIL OF CAST-IN-PLACE CONCRETE DEADMAN

NOTE:
PRECAST CONCRETE DEADMEN AND CAST-IN-PLACE CONCRETE
DEADMEN SHALL BE CONSTRUCTED OF CLASS SI CONCRETE

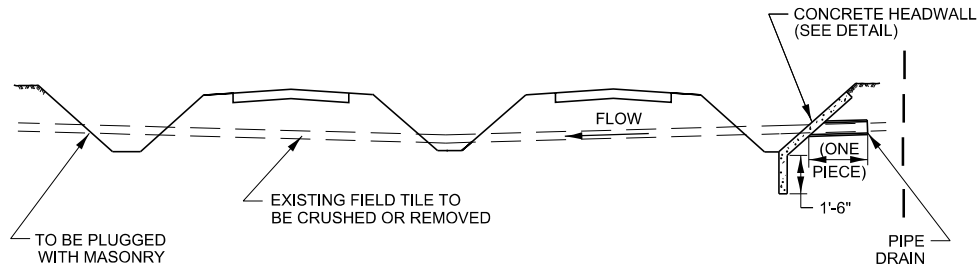
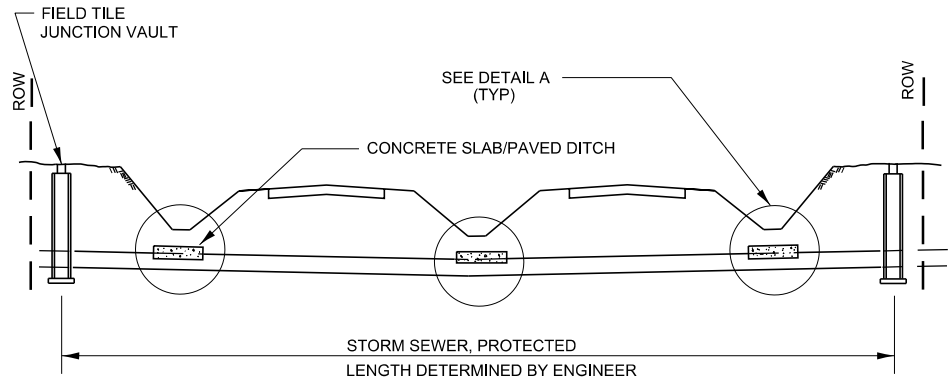
BILL OF MATERIALS

QUANTITY	UNIT	ITEM
240	FT	3/4" DIA. GALVANIZED WIRE ROPE
4	EACH	3/4" DIA. x 15" GALVANIZED EYE BOLTS WITH NUTS AND WASHERS
2	EACH	3/4" DIA. GALVANIZED TURNBUCKLES
20	EACH	3/4" DIA. GALVANIZED CABLE CLAMPS
4	EACH	5" x 5" x 3/4" STEEL WASHER PLATES
2	EACH	PRECAST CONCRETE DEADMAN OR CAST-IN-PLACE CONCRETE DEADMAN
98	FT	12" CREOSOTED TIMBER PILE (INCLUDES FURNISHING AND DRIVING TIMBER PILES)

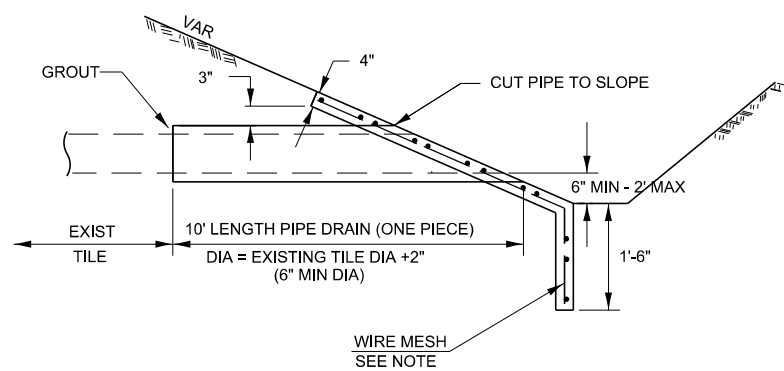
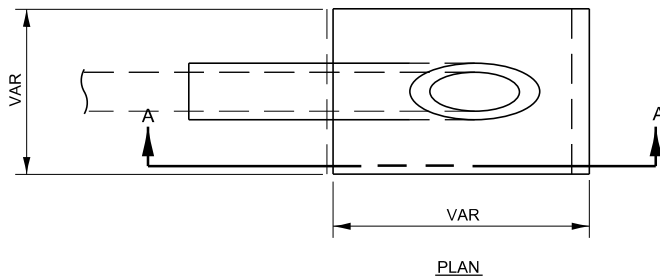
DETAIL OF FLOOD GATE SUPPORT

607-2

	USER NAME = anthony.grunstad	DESIGNED -	REVISED -	STATE OF ILLINOIS DEPARTMENT OF TRANSPORTATION	SCALE: SHEET OF SHEETS STA. TO STA.			F.A. RTE.	SECTION	COUNTY	TOTAL SHEETS	SHEET NO.
	PLOT SCALE = 100,000 ' / in.	DRAWN -	REVISED -									
	PLOT DATE = 10/3/23	CHECKED -	REVISED -					CONTRACT NO.				
		DATE -	REVISED -					ILLINOIS FED. AID PROJECT				

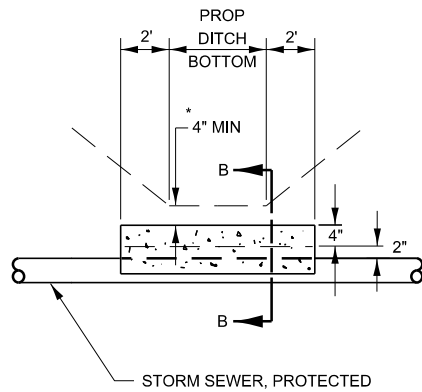


FIELD TILE REPLACEMENT



SECTION A-A

CLASS SI CONCRETE HEADWALLS



DETAIL A

NO SCALE

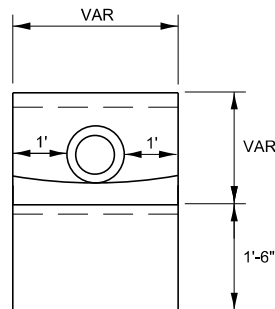
* IF A 4" COVER CAN NOT BE PROVIDED A PAVED DITCH SHALL BE CONSTRUCTED AS SHOWN IN DETAIL C.

NOTES

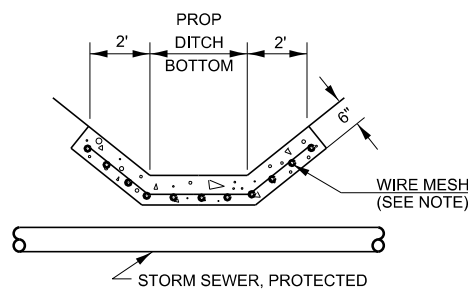
1. WIDTH OF CONCRETE SLAB SHALL BE THE SAME AS THE TRENCH WIDTH IN ACCORDANCE WITH SECTION 550 OF THE STD. SPECIFICATIONS, OR 3' MIN.
2. CONCRETE FOR SLAB, HEADWALL AND PAVED DITCH SHALL BE PAID FOR AT THE CONTRACT UNIT PRICE PER CUBIC YARD FOR "MISCELLANEOUS CONCRETE."
3. COST OF FURNISHING AND INSTALLING WIRE MESH SHALL BE INCLUDED IN THE CONTRACT UNIT PRICE PER CUBIC YARD FOR MISCELLANEOUS CONCRETE. WIRE MESH TO WEIGH NOT LESS THAN 58# PER 100 SQ FT

NOTES

1. ANY STORM SEWER SPECIAL OR BACKSLOPE DRAIN OUTLET INTO A DITCH SHALL HAVE A HEADWALL BUILT IN ACCORDANCE WITH THIS DETAIL.
2. COST OF FURNISHING AND INSTALLING WIRE MESH SHALL BE INCLUDED IN THE CONTRACT UNIT PRICE PER CUBIC YARD FOR MISCELLANEOUS CONCRETE. WIRE MESH TO WEIGH NOT LESS THAN 58# PER 100 SQ FT

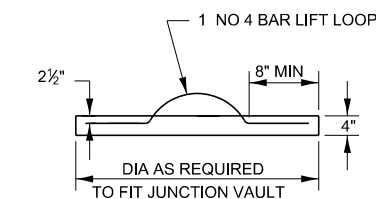
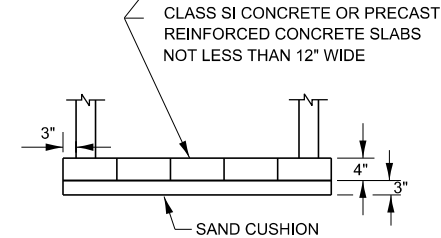
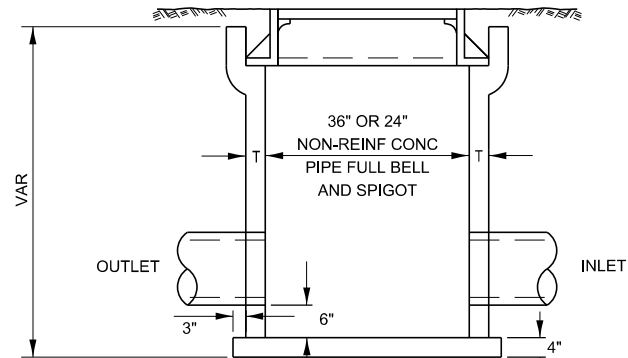
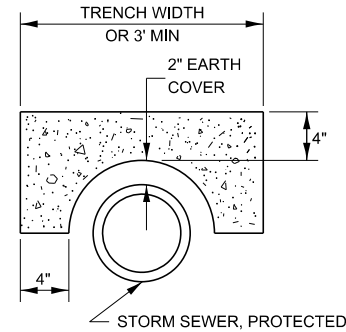


END VIEW



DETAIL C

NO SCALE

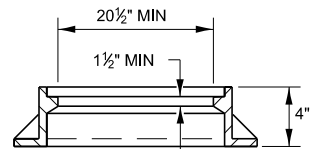
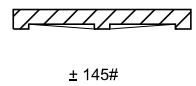
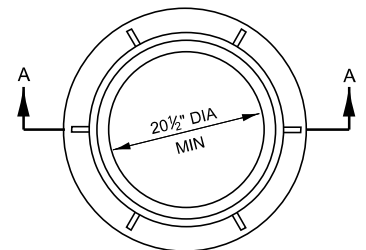


FIELD TILE JUNCTION VAULT

ALTERNATE MATERIALS FOR WALLS	T
PRECAST REINFORCED CONCRETE RISERS	4"
CONCRETE MASONRY UNIT	5"
MONOLITHIC CONCRETE	6"

NOTES

1. THE CONTRACT UNIT PRICE FOR FIELD TILE JUNCTION VAULT SHALL INCLUDE THE COST OF FURNISHING AND PLACING THE FRAME AND GRATE OR PRECAST CONCRETE LID AND WHEN REQUIRED, THE SAND CUSHION.
2. ALL FIELD TILE JUNCTION VAULTS SHALL BE 2'-0" IN DIAMETER UNLESS OTHERWISE NOTED ON THE PLANS.



SECTION A-A

611-1

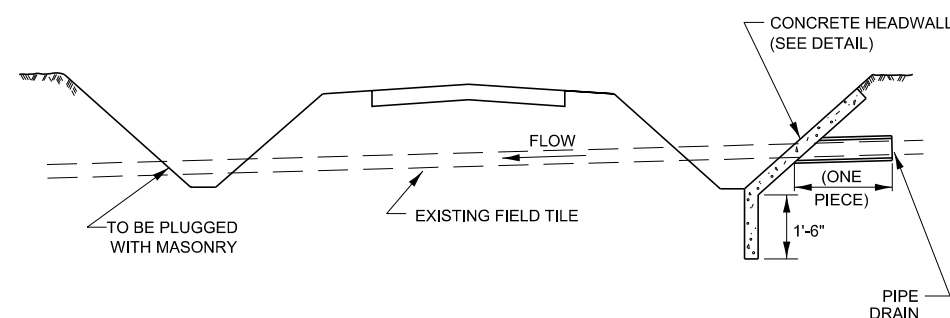
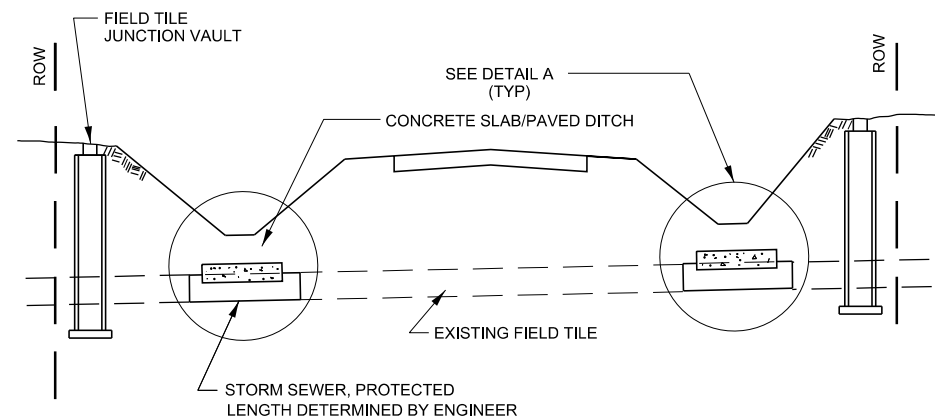
MODEL: det 3 details
FILE: \\hwy2-2\pww\csw.bentley.com\pww\DOT\Documents\DOT Office\Dir\det 3\Projects-Darcy Details\03 Detail Revisions 2023\600-699 INCIDENTAL CONSTRUCTION.dgn

USER NAME	= anthony.grunstad	DESIGNED	-	REVISED	-
		DRAWN	-	REVISED	-
PLOT SCALE	= 100,000 ' / in.	CHECKED	-	REVISED	-
PLOT DATE	= 10/3/23	DATE	-	REVISED	-

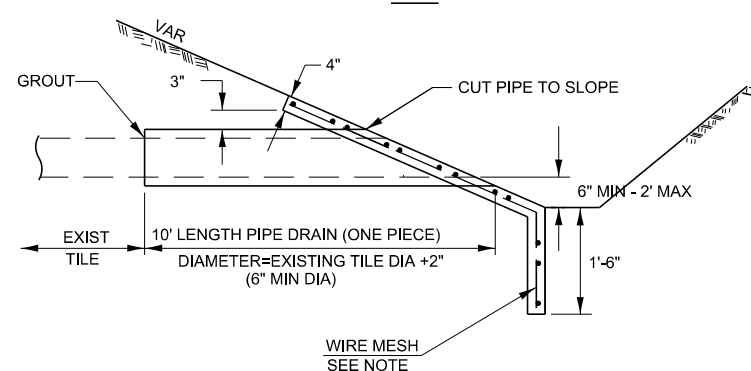
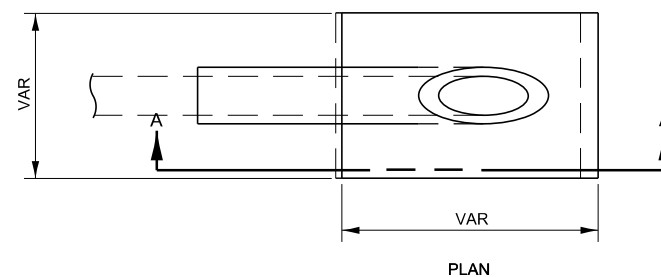
STATE OF ILLINOIS
DEPARTMENT OF TRANSPORTATION

SCALE: SHEET OF SHEETS STA. TO STA.

F.A. RTE.	SECTION	COUNTY	TOTAL SHEETS	SHEET NO.
CONTRACT NO.				
ILLINOIS FED. AID PROJECT				

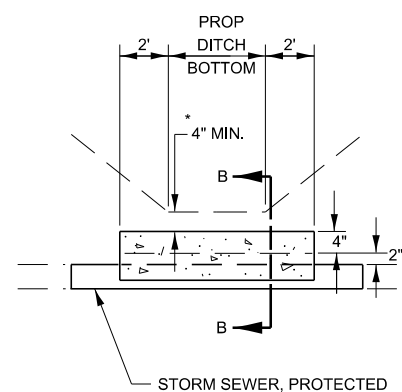


FIELD TILE REPLACEMENT



SECTION A-A

CLASS SI CONCRETE HEADWALLS



DETAIL A

NO SCALE

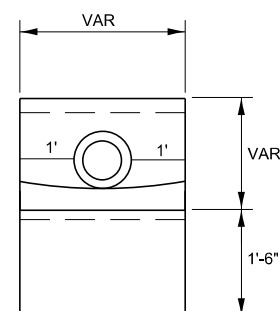
* IF A 4" COVER CAN NOT BE PROVIDED A PAVED DITCH SHALL BE CONSTRUCTED AS SHOWN IN DETAIL C.

NOTES

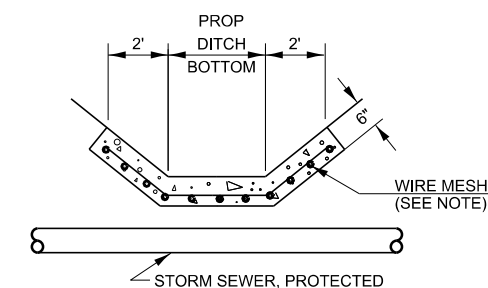
1. WIDTH OF CONCRETE SLAB SHALL BE THE SAME AS THE TRENCH WIDTH IN ACCORDANCE WITH SECTION 550 OF THE STD. SPECIFICATIONS, OR 3' MIN.
2. CONCRETE FOR SLAB, HEADWALL AND PAVED DITCH SHALL BE PAID FOR AT THE CONTRACT UNIT PRICE PER CUBIC YARD FOR "MISCELLANEOUS CONCRETE."
3. COST OF FURNISHING AND INSTALLING WIRE MESH SHALL BE INCLUDED IN THE CONTRACT UNIT PRICE PER CUBIC YARD FOR MISCELLANEOUS CONCRETE. WIRE MESH TO WEIGH NOT LESS THAN 58# PER 100 SQ FT

NOTES

1. ANY STORM SEWER OR FIELD TILE OUTLET INTO A DITCH SHALL HAVE A HEADWALL BUILT IN ACCORDANCE WITH THIS DETAIL.
2. COST OF FURNISHING AND INSTALLING WIRE MESH SHALL BE INCLUDED IN THE CONTRACT UNIT PRICE PER CUBIC YARD FOR MISCELLANEOUS CONCRETE. WIRE MESH TO WEIGH NOT LESS THAN 58# PER 100 SQ FT

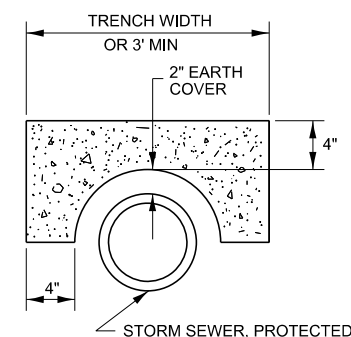


END VIEW

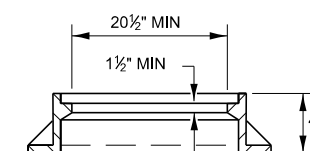
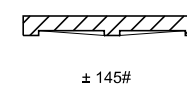
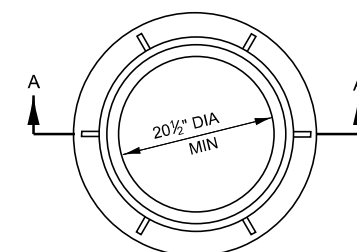
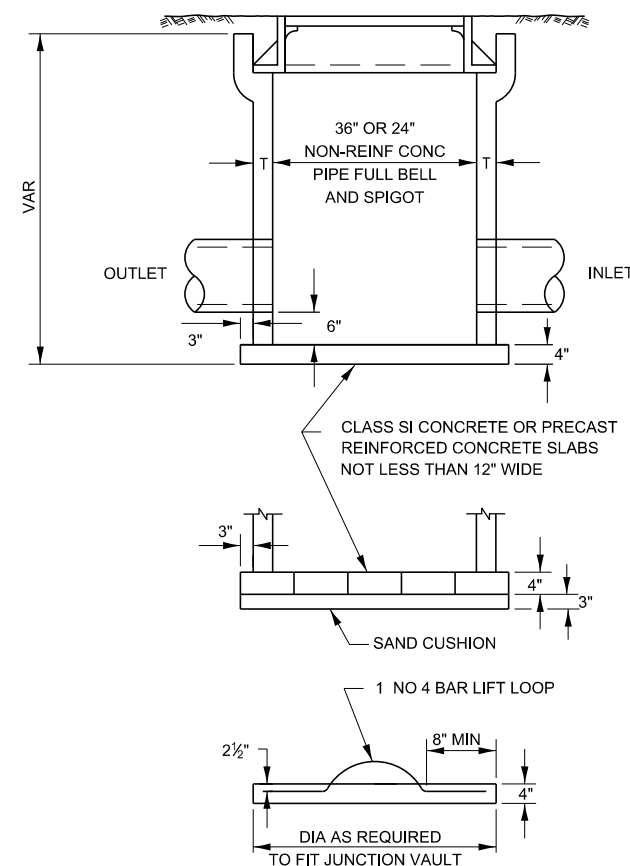


DETAIL C

NO SCALE



SECTION B-B



SECTION A-A

FIELD TILE JUNCTION VAULT

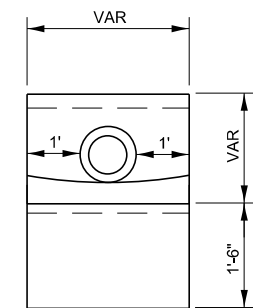
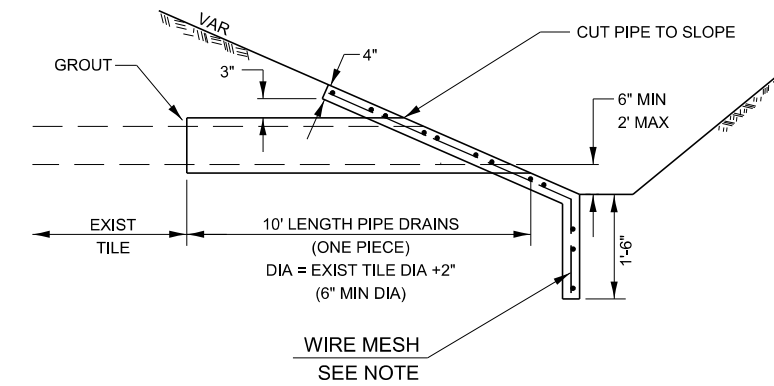
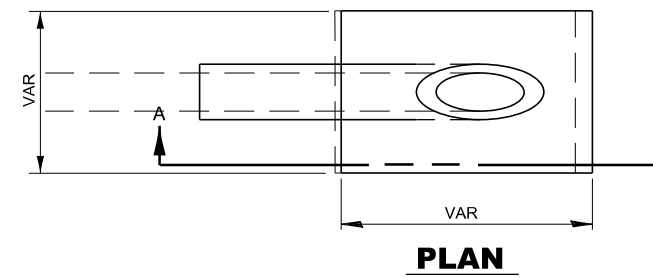
ALTERNATE MATERIALS FOR WALLS	
PRECAST REINFORCED CONCRETE RISERS	4
CONCRETE MASONRY UNIT	5
MONOLITHIC CONCRETE	6

NOTES

1. THE CONTRACT UNIT PRICE FOR FIELD TILE JUNCTION VAULT SHALL INCLUDE THE COST OF FURNISHING AND PLACING THE FRAME AND GRATE OR PRECAST CONCRETE LID AND WHEN REQUIRED, THE SAND CUSHION.
2. ALL FIELD TILE JUNCTION VAULTS SHALL BE 2'-0" IN DIAMETER UNLESS OTHERWISE NOTED ON THE PLANS.

NOTES

1. ANY FIELD TILE OUTLET INTO A DITCH SHALL HAVE A HEADWALL BUILT IN ACCORDANCE WITH THIS DETAIL.
2. COST OF FURNISHING AND INSTALLING WIRE MESH SHALL BE INCLUDED IN THE CONTRACT UNIT PRICE PER CUBIC YARD FOR MISCELLANEOUS CONCRETE. WIRE MESH TO WEIGH NOT LESS THAN 58# PER 100 SQ FT



END VIEW

SECTION A-A

PIPE DRAINS & CONCRETE HEADWALLS

611-3

USER NAME = anthony.grunstad	DESIGNED -	REVISED -
	DRAWN -	REVISED -
PLOT SCALE = 100,000 ' / in.	CHECKED -	REVISED -
PLOT DATE = 10/3/23	DATE -	REVISED -

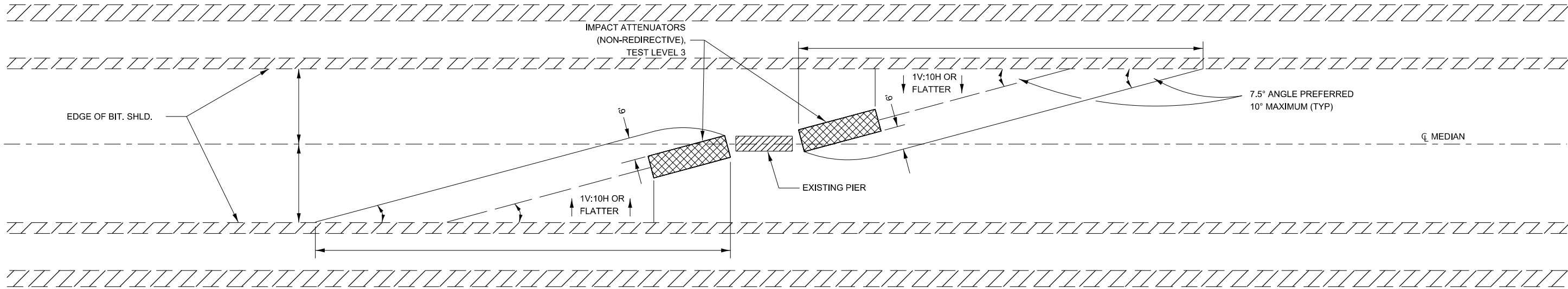
STATE OF ILLINOIS
DEPARTMENT OF TRANSPORTATION

SCALE:	SHEET	OF	SHEETS	STA. TO STA.

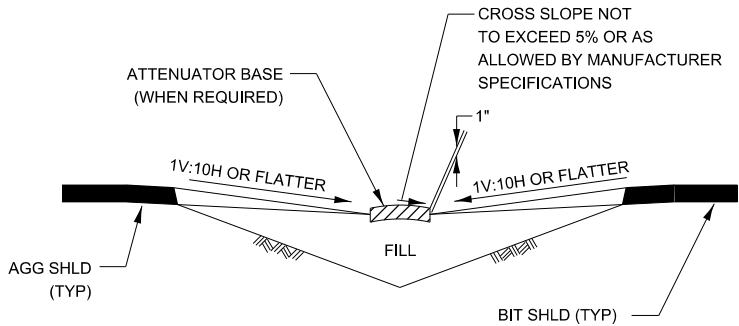
F.A. RTE.	SECTION	COUNTY	TOTAL SHEETS	SHEET NO.
		CONTRACT NO.		
ILLINOIS		FED. AID PROJECT		

GENERAL NOTES

- 1. THE 10:1 SLOPE CONTROLS NOSE OF ATTENUATOR BASE ELEVATION.
- 2. ATTENUATOR BASE GRADE PARALLELS EDGE OF PAVEMENT GRADE.
- 3. SLOPE ADJACENT TO ATTENUATOR BASE SHALL BE 10:1 OR FLATTER.

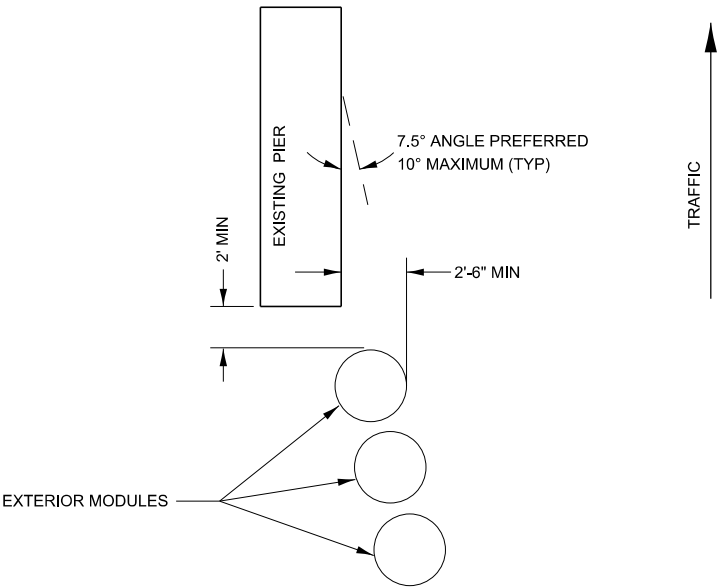


IMPACT ATTENUATOR LAYOUT AND GRADING PLAN



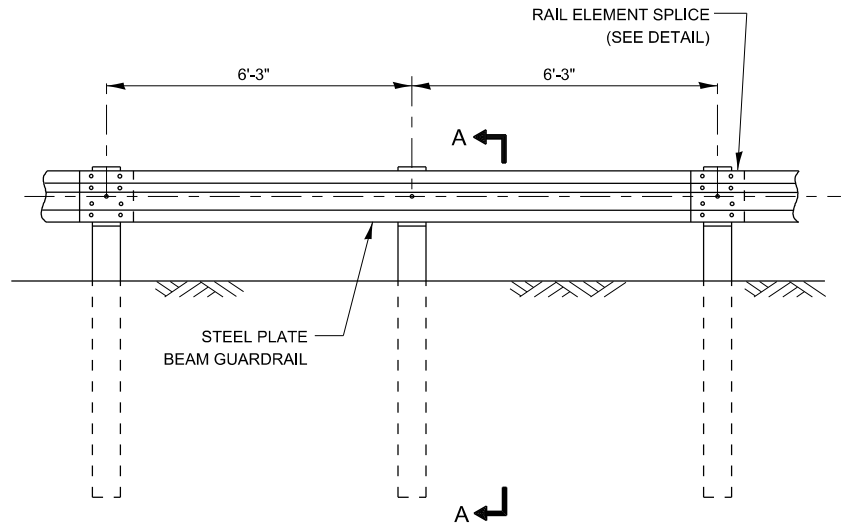
SECTION A - A

- NOTE:
- ATTENUATOR BASE SHALL BE PER MANUFACTURER SPECIFICATIONS EXCEPT SAND MODULE SYSTEMS SHALL HAVE THE FOLLOWING ADDITIONAL REQUIREMENTS:
- 1. ATTENUATOR BASE SHALL PROVIDE A 1' BUFFER ALONG THE SIDES AND FRONT OF THE ARRAY.
 - 2. SAND MODULE SYSTEMS SHALL BE PLACED ON A HMA OR CONCRETE BASE.



TYPICAL EXTERIOR MODULE LAYOUT

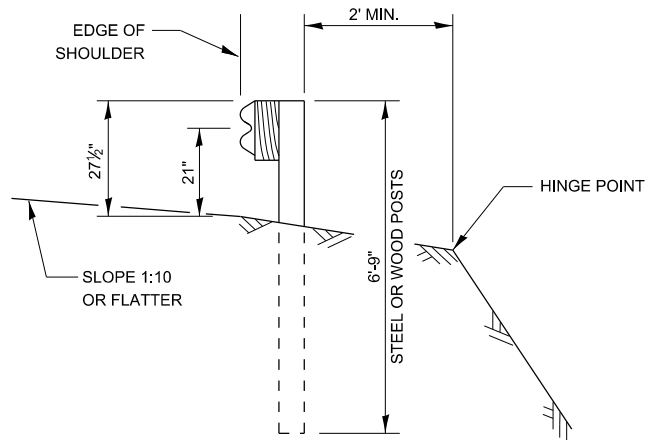
	USER NAME = anthony.grunstad	DESIGNED -	REVISED -	STATE OF ILLINOIS DEPARTMENT OF TRANSPORTATION	IMPACT INSTALLATION DETAILS					F.A. RTE.	SECTION	COUNTY	TOTAL SHEETS	SHEET NO.
		DRAWN -	REVISED -											
	PLOT SCALE = 100,000 ' / in.	CHECKED -	REVISED -							CONTRACT NO.				
	PLOT DATE = 10/3/23	DATE -	REVISED -		SCALE:	SHEET	OF	SHEETS	STA.	TO STA.	ILLINOIS	FED. AID PROJECT		



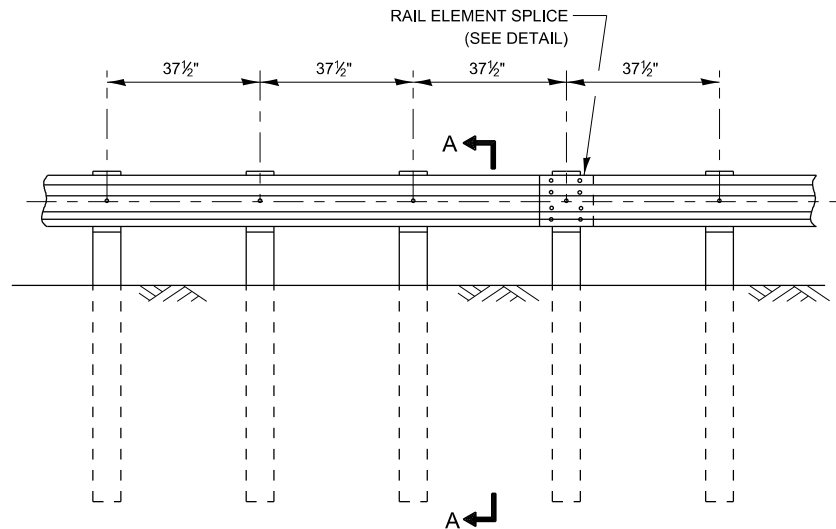
ELEVATION

TYPE A

6'-3" TYPICAL POST SPACING



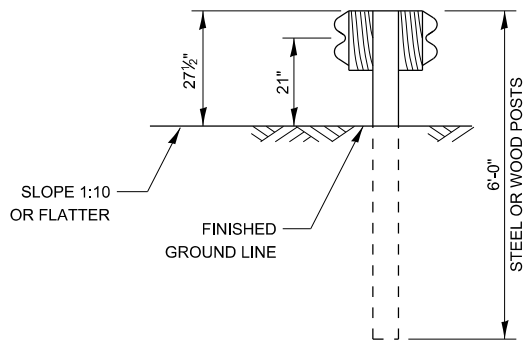
SECTION A-A



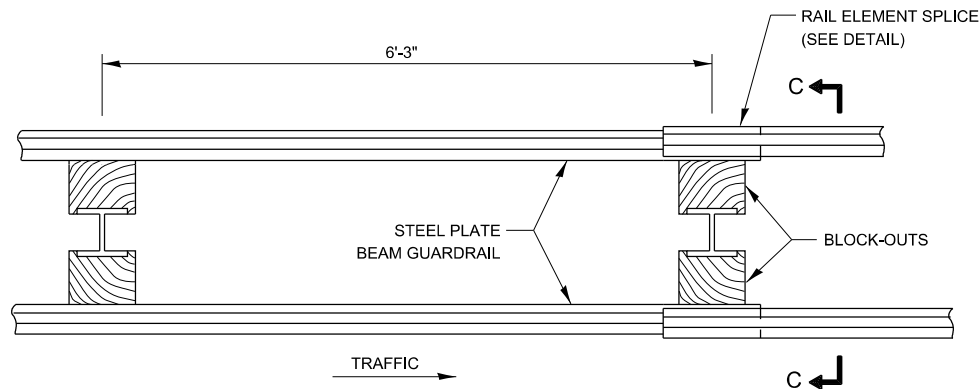
ELEVATION

TYPE B

37 1/2" CLOSED POST SPACING



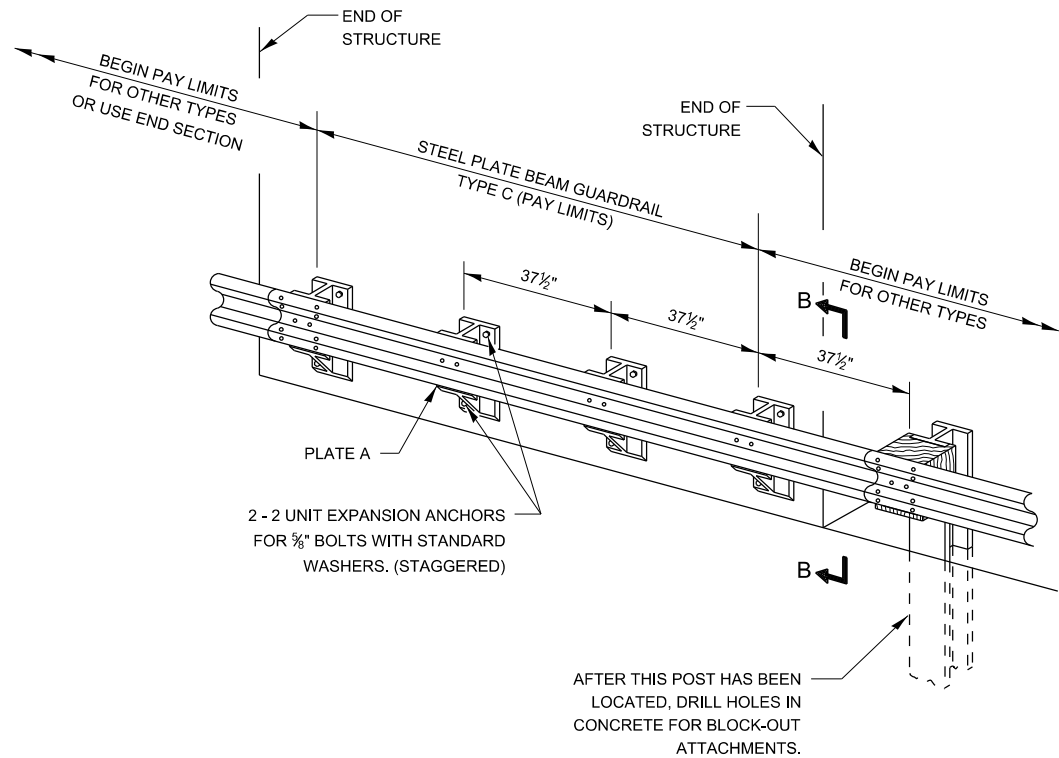
SECTION C-C



PLAN

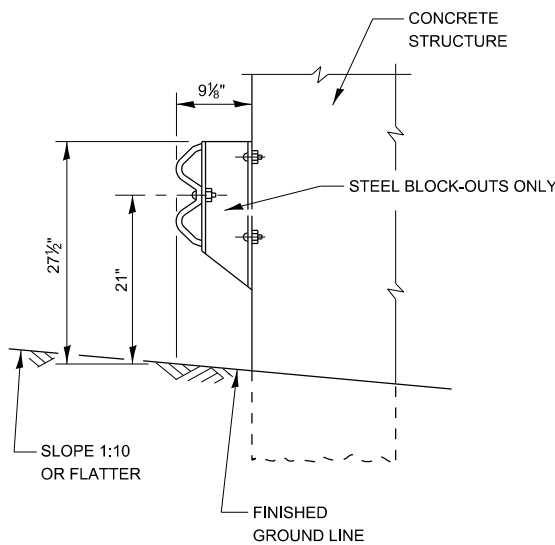
TYPE D

DOUBLE STEEL PLARE BEAM GUARDRAIL
6'-3" TYPICAL POST SPACING



TYPE C

37 1/2" BLOCK-OUT SPACING



SECTION B-B

GENERAL NOTES

ALL SLOPE RATIOS ARE EXPRESSED AS UNITS OF VERTICAL DISPLACEMENT TO UNITS OF HORIZONTAL DISPLACEMENT (V:H).

THE EXISTING STEEL POSTS MAY BE DRILLED TO MATCH THE BOLT PATTERN SHOWN HEREIN FOR THE WOOD BLOCK-OUTS, OR A NEW STEEL POST SHALL BE PROVIDED.

THIS DETAIL IS APPLICABLE TO THE GUARDRAIL SYSTEM USED PRIOR TO JANUARY 1, 2007. FOR DETAILS ON THE MIDWEST GUARDRAIL SYSTEM SEE STANDARD 630001.

MODEL: det 3 details
FILE: \\bentley.com\p00000000\dwg\det 3 details.dwg
PROJECT: 20230604-699 INCIDENTAL CONSTRUCTION.dwg

USER NAME	= anthony.grunstad	DESIGNED	-
DRAWN	-	REVISED	-
PLOT SCALE	= 100,000 ' / in.	CHECKED	-
PLOT DATE	= 10/3/23	DATE	-

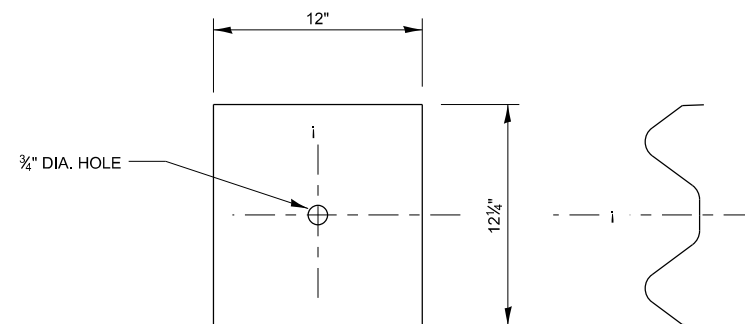
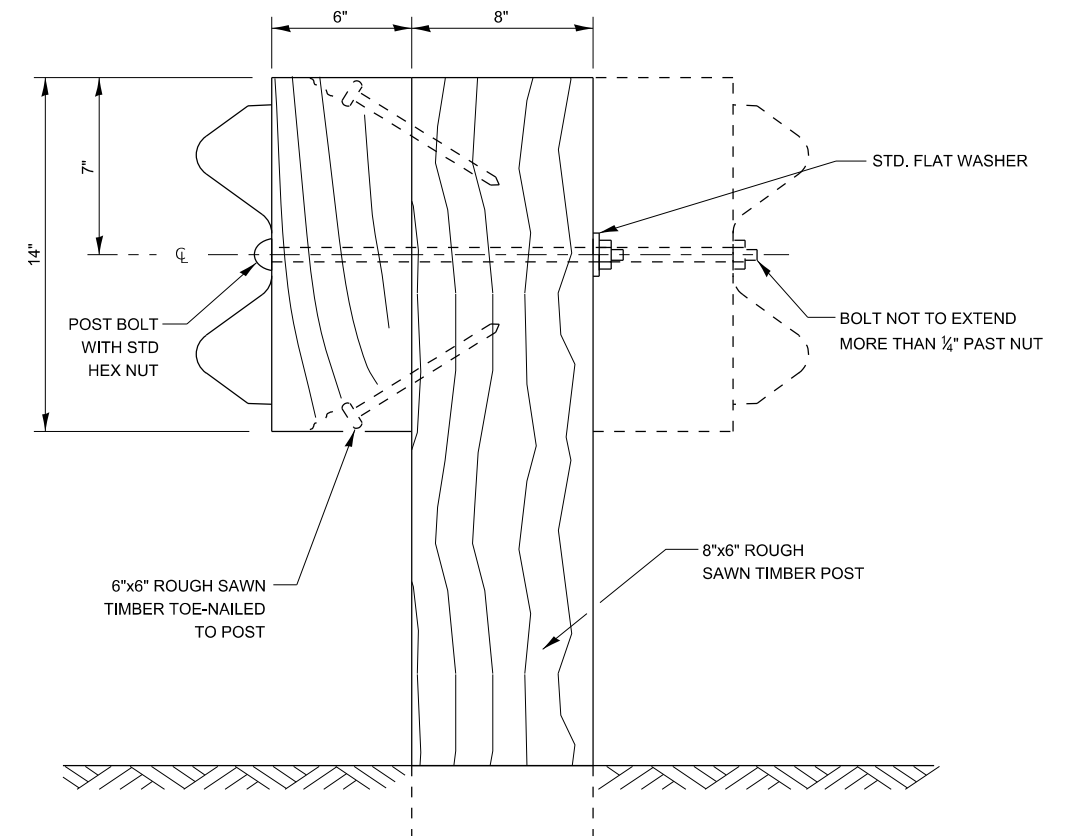
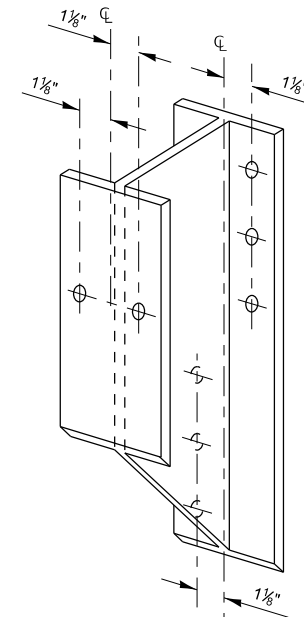
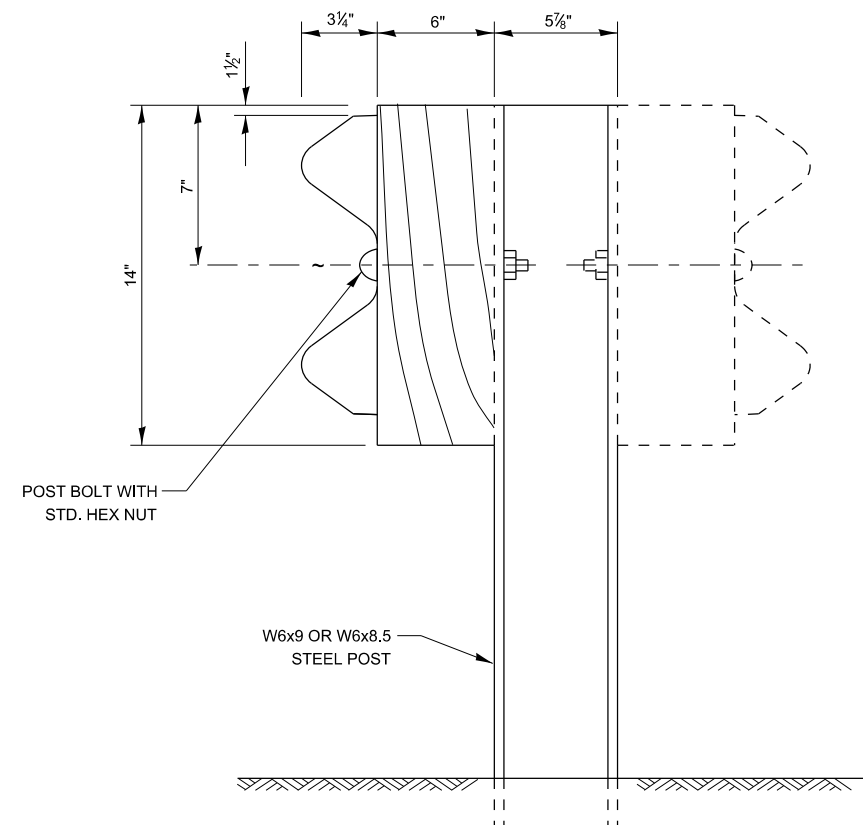
STATE OF ILLINOIS
DEPARTMENT OF TRANSPORTATION

REMOVE AND REERECT STEEL PLATE BEAM GUARDRAIL

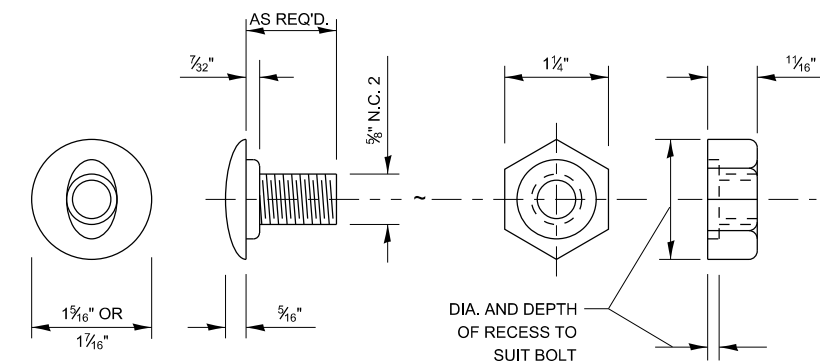
SCALE: SHEET OF SHEETS STA. TO STA.

F.A. RTE.	SECTION	COUNTY	TOTAL SHEETS	SHEET NO.
CONTRACT NO.				
ILLINOIS FED. AID PROJECT				

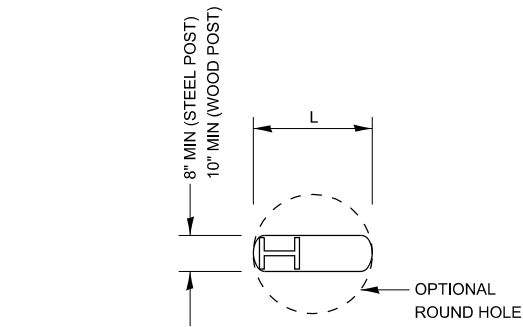
633-1A



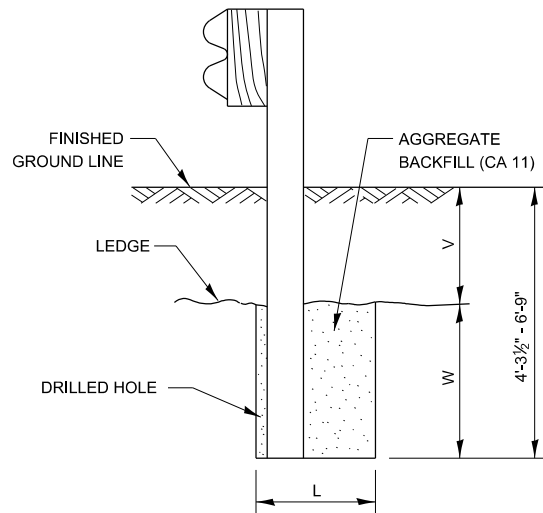
NOTE:
PLATE A SHALL BE PLACED BETWEEN RAIL
ELEMENT AND BLOCK-OUT AT NON-SPLICE
MOUNTING POINTS ONLY WHEN STEEL
BLOCK-OUTS ARE USED.



MODEL.dgn 3 details
FILE Name: s:\w\ms-cw\hantley.com\WIDOT\Documents\DOT Offices\Director: 3\Projects-Darcy Details\03 Detail Revisions 2023\600-699 INCIDENTAL CONSTRUCTION.dgn



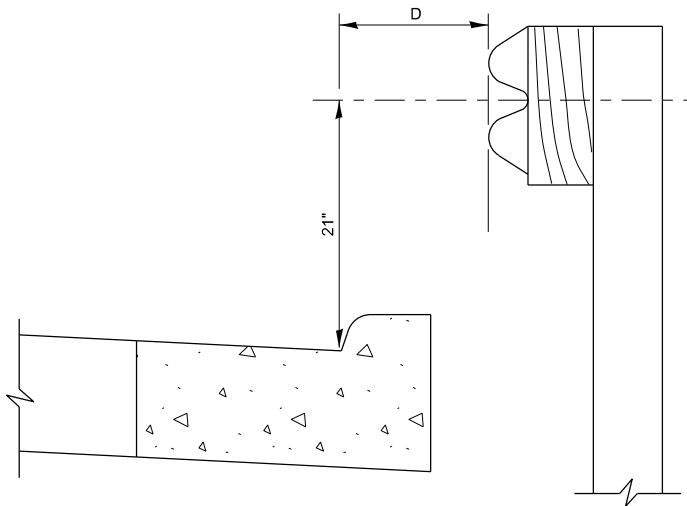
PLAN



NOTE:
LEDGE LINE IS TOP OF ROCK LEDGE OR HARD SLAG FILL.

ELEVATION

FOOTING FOR POST WHEN IMPERVIOUS
MATERIAL IS ENCOUNTERED

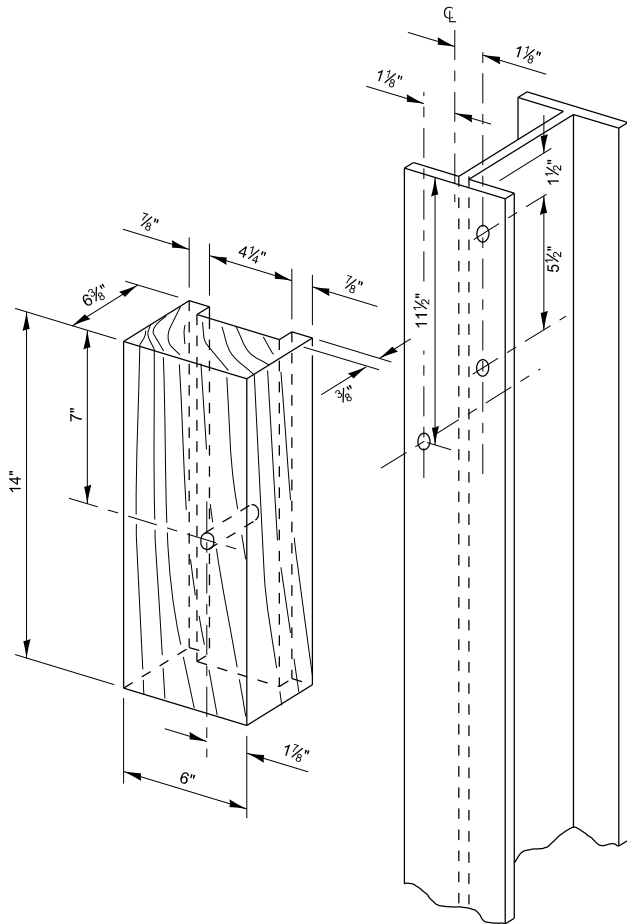


NOTE:
IF IT IS NECESSARY FOR D TO BE MORE THAN 12" AND LESS THAN 10'-0"
TYPE M-2 CURB AND GUTTER (STD 606001) SHALL BE USED IN FRONT OF
AND IN ADVANCE OF THE GUARDRAIL.

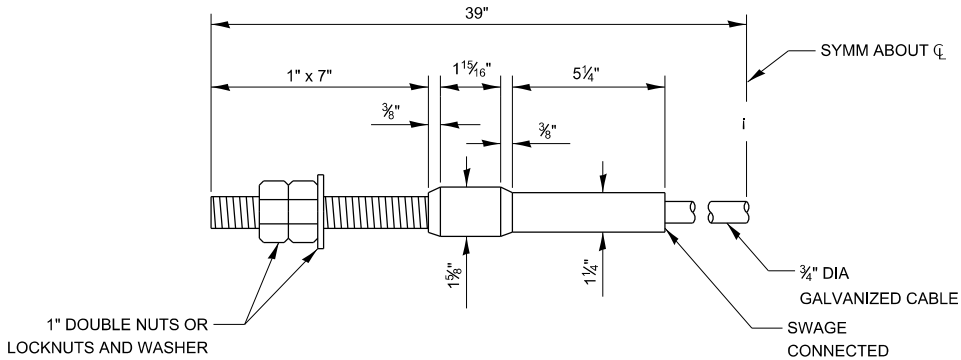
GUARDRAIL PLACED BEHIND CURB

(D = 0 DESIRABLE TO 12" MAXIMUM)

V	W	L	
		STEEL POST	WOOD POST
0" - 18"	24"	21"	23"
>18" - 41½"	12"	8"	10"
>41½" - 53½"	12" - 0"	8"	10"



WOOD BLOCK-OUT AND
STEEL POST DETAILS



CABLE ASSEMBLY

40,000 LBS MIN BREAKING STRENGTH
TIGHTEN TO TAUT TENSION.

633-1D

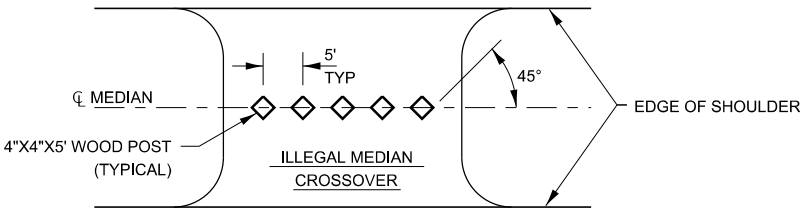
USER NAME = anthony.grunstad	DESIGNED -	REVISED -
PLOT SCALE = 100,000 ' / in.	DRAWN -	REVISED -
PLOT DATE = 10/3/23	CHECKED -	REVISED -
	DATE -	REVISED -

STATE OF ILLINOIS
DEPARTMENT OF TRANSPORTATION

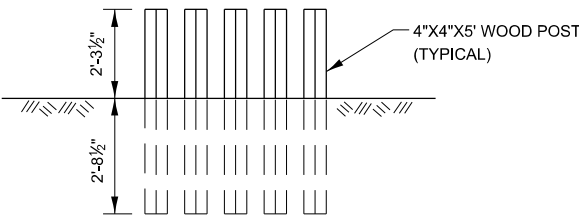
REMOVE AND REERECT STEEL PLATE BEAM GUARDRAIL

SCALE: SHEET OF SHEETS STA. TO STA.

F.A. RTE.	SECTION	COUNTY	TOTAL SHEETS	SHEET NO.
CONTRACT NO.				
ILLINOIS		FED. AID PROJECT		



PLAN



ELEVATION

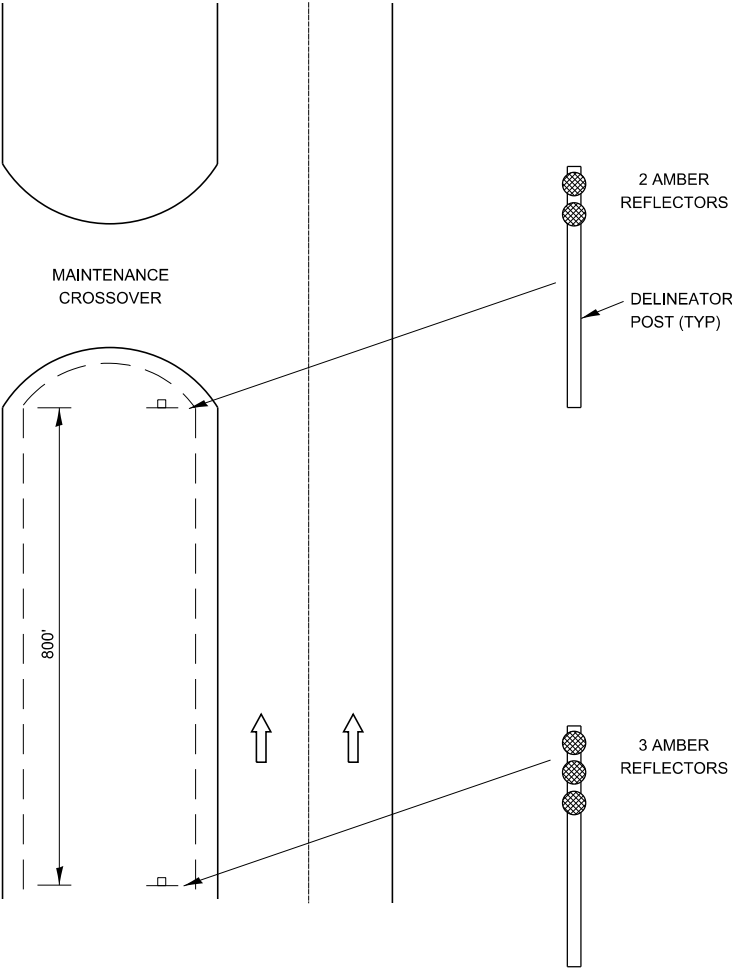
WOOD POST DETAIL

634-1

MODEL dlet 3 details
FILE Name: s:\wms\csw.bentley.com\WIDOT\Documents\DOT Offices\Bldgct 3\Projects\Caray Details\03 Detail Revisions 2023\604699 INCIDENTAL CONSTRUCTION.dgn

	USER NAME	= anthony.grunstad	DESIGNED	-	REVISED	-	STATE OF ILLINOIS DEPARTMENT OF TRANSPORTATION				F.A. RTE.	SECTION	COUNTY	TOTAL SHEETS	SHEET NO.
			DRAWN	-	REVISED	-									
	PLOT SCALE	= 100,000 ' / in.	CHECKED	-	REVISED	-									
	PLOT DATE	= 10/3/23	DATE	-	REVISED	-									
											SCALE:	SHEET	OF	SHEETS	STA.
												CONTRACT NO.			
												ILLINOIS	FED. AID PROJECT		

MODEL: dlet 3 details
FILE: \\nrt1c-pw\mws-cw\hertley.com\PI\DOT\Documents\DOT_Offices\Director 3\Projects-Caroy Details\03 Detail Revisions 2023\600-699 INCIDENTAL CONSTRUCTION.dgn

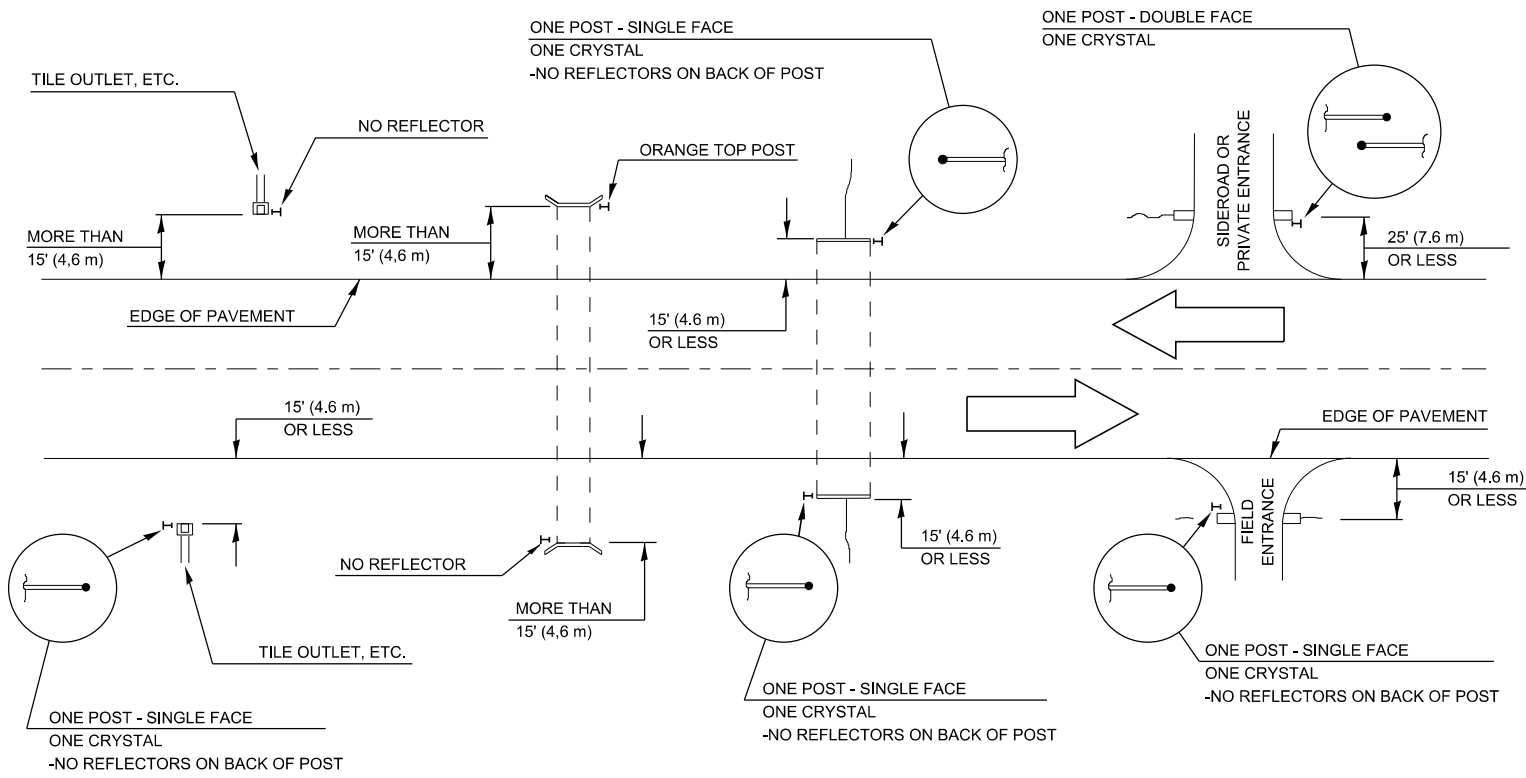


**DELINEATION
FOR MAINTENANCE
CROSSOVER
(TYPICAL FOR BOTH DIRECTIONS)**

635-2

	USER NAME = anthony.grunstad	DESIGNED -	REVISED -	STATE OF ILLINOIS DEPARTMENT OF TRANSPORTATION	SCALE:		SHEET	OF	SHEETS	STA.	TO STA.	F.A. RTE.	SECTION	COUNTY	TOTAL SHEETS	SHEET NO.									
		DRAWN -	REVISED -																						
	PLOT SCALE = 100,000 ' / in.	CHECKED -	REVISED -																						
	PLOT DATE = 10/3/23	DATE -	REVISED -																						
														CONTRACT NO.											
														ILLINOIS	FED. AID PROJECT										

IDENTIFICATION OF ROADSIDE HAZARDS FOR TWO-LANE ROADWAYS



BILL OF MATERIALS

DELINEATOR TYPE	SINGLE FACE	DOUBLE FACE	NO REFLECTOR	TOTAL DELINEATORS
SINGLE CRYSTAL			N/A	
NO REFLECTOR			TOTAL	

NOTE:

DELINEATORS FOR ROADSIDE HAZARDS SHALL ONLY BE PLACED AT LOCATIONS WHERE THERE IS NO GUARDRAIL, OR OTHER PERMANENT BARRIER, ON THE SAME SIDE OF THE ROAD AS THE HAZZARD.

DELINEATORS FOR ROADSIDE HAZARDS SHALL ONLY BE PLACED AT LOCATIONS WHERE DELINEATORS ARE NOT IN PLACE ALONG THE EDGE OF SHOULDER.

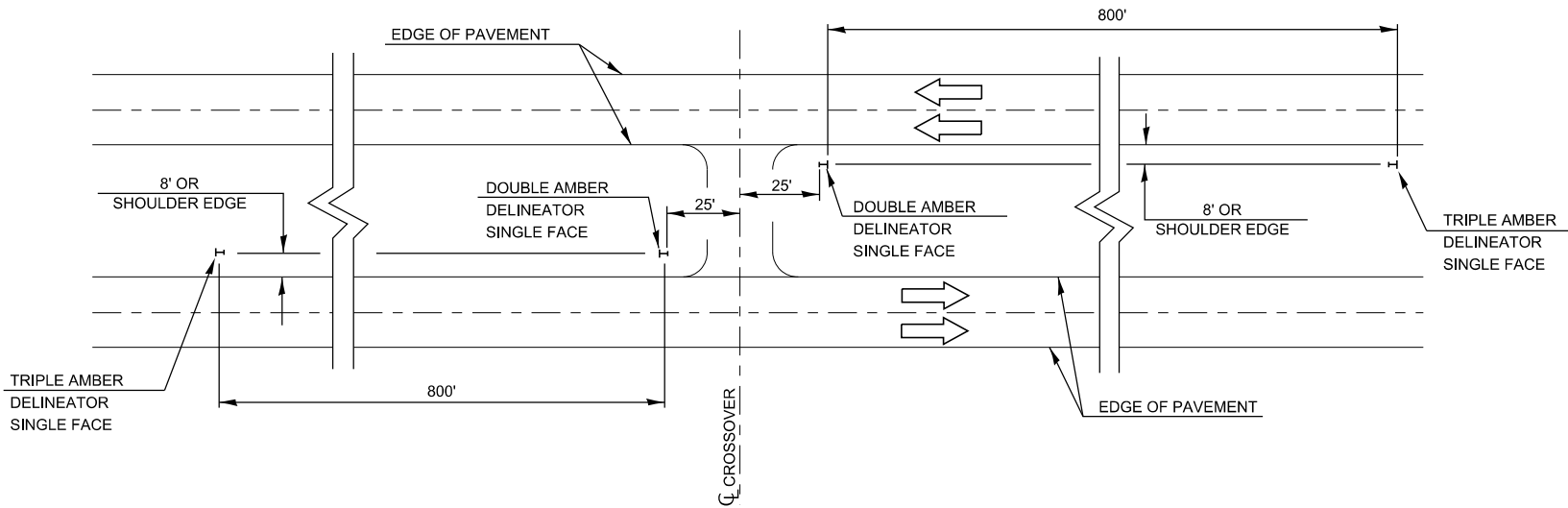
EACH POST SHALL BE CONSIDERED AS ONE DELINEATOR FOR PAYMENT, REGARDLESS OF THE NUMBER OF DELINEATORS ATTACHED TO IT.

FOR ONE-WAY AND INTERSTATE ROADWAYS THE APPLICATION SHALL BE SIMILAR WITH DELINEATORS PLACED ON THE TRAFFIC APPROACH SIDE OF HAZARDS AND OBJECTS, ONLY SINGLE FACE DELINEATORS WILL BE REQUIRED ON ONE-WAY ROADWAYS, CRYSTAL ON THE RIGHT SIDE AND AMBER ON THE LEFT SIDE.

FOR OTHER DELINEATOR APPLICATIONS, REFER TO HIGHWAY STANDARD 635001.

MEDIAN DELINEATORS AT CROSSOVER

(FOR INTERSTATES, EXPRESSWAYS, DUAL HIGHWAYS)



DESIGNER NOTE:
REMOTE OPENING FOR FILL CLOSURE.

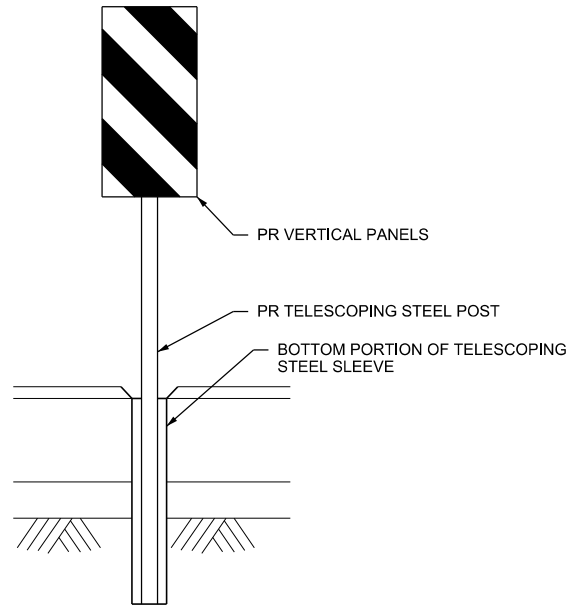
USER NAME	= anthony.grunstad	DESIGNED	-	REVISED	-
DRAWN	-	CHECKED	-	REVISED	-
PLOT SCALE	= 100,000 ' / in.	DATE	-	REVISED	-
PLOT DATE	= 10/3/23				

STATE OF ILLINOIS
DEPARTMENT OF TRANSPORTATION

DELINEATOR PLACEMENT

SCALE: SHEET OF SHEETS STA. TO STA.

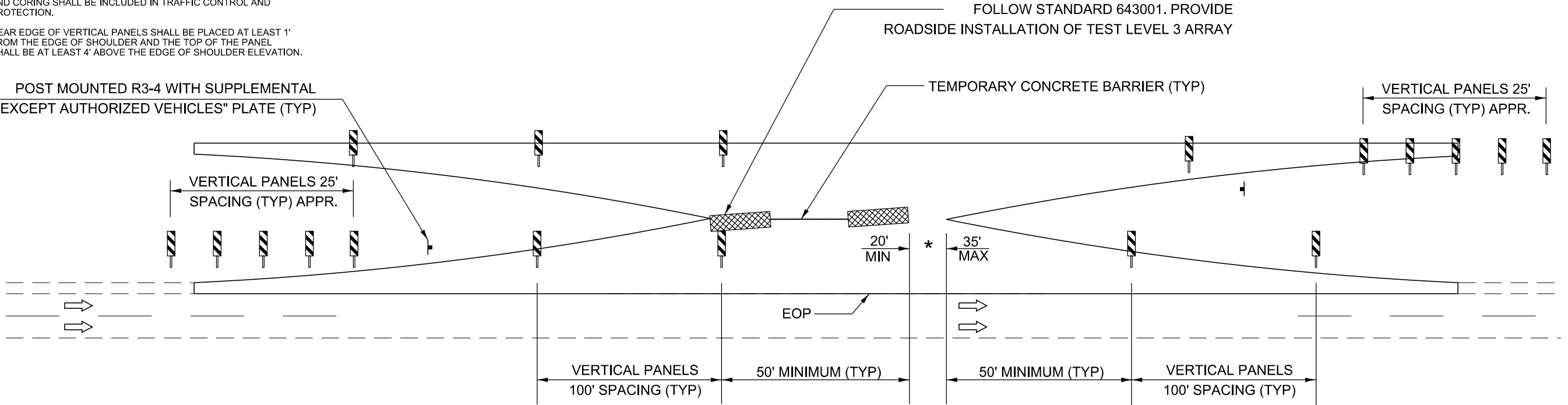
F.A. RTE.	SECTION	COUNTY	TOTAL SHEETS	SHEET NO.
CONTRACT NO.				
ILLINOIS FED. AID PROJECT				



NOTE: FOR INSTALLATION OF VERTICAL PANELS IN AREAS OF CROSSOVER PAVEMENT, 3" Ø HOLES SHALL BE CORED THROUGH PAVEMENT FOR PLACEMENT. TELESOPING STEEL POLES SHALL BE PLACED 1" BELOW SURFACE AS SHOWN, AND WORK SHALL BE DONE TO THE SATISFACTION OF THE ENGINEER. WHEN OPENING CROSSOVER, PANELS SHALL BE REMOVED AND HOLES SHALL BE LEFT IN PLACE. COST OF PANELS, POSTS, SLEEVES, TYPE III BARRICADES, SIGNS, AND CORING SHALL BE INCLUDED IN TRAFFIC CONTROL AND PROTECTION.

NEAR EDGE OF VERTICAL PANELS SHALL BE PLACED AT LEAST 1' FROM THE EDGE OF SHOULDER AND THE TOP OF THE PANEL SHALL BE AT LEAST 4' ABOVE THE EDGE OF SHOULDER ELEVATION.

POST MOUNTED R3-4 WITH SUPPLEMENTAL "EXCEPT AUTHORIZED VEHICLES" PLATE (TYP)



LEGEND

- TRAFFIC FLOW ARROW
- TYPE III BARRICADE
- IMPACT ATTENUATOR
- BARREL W/STEADY BURNING LIGHT
- POST MOUNTED SIGN
- BARRIER WALL MARKER
- TEMPORARY CONCRETE BARRIER
- VERTICAL SIGN PANEL

* REMOVE GAP FOR FULL CLOSURE

CROSSOVER CLOSURE-TYPICAL

636-1

NOT TO SCALE

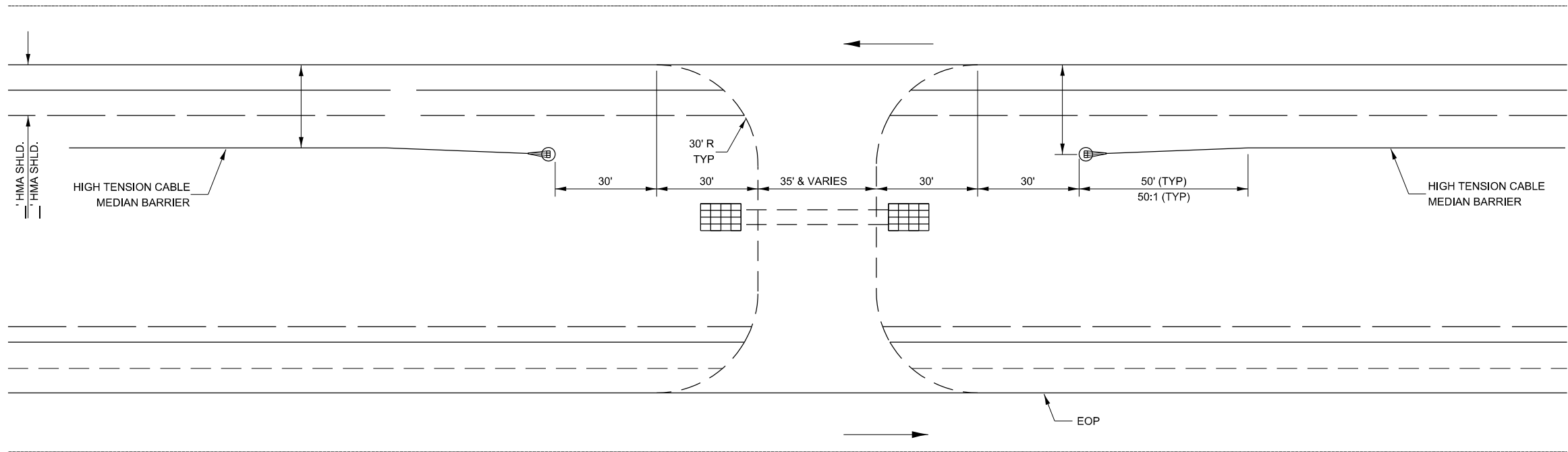
MODEL det 3 details
FILE Name: s:\w\dot\documents\DOT Office\Detail: 3\Projects-Darcy Detail\03 Detail Revisions 2023\604-699 INCIDENTAL CONSTRUCTION.dgn

USER NAME	= anthony.grunstad	DESIGNED	-	REVISED	-
		DRAWN	-	REVISED	-
PLOT SCALE	= 100,000 ' / in.	CHECKED	-	REVISED	-
PLOT DATE	= 10/3/23	DATE	-	REVISED	-

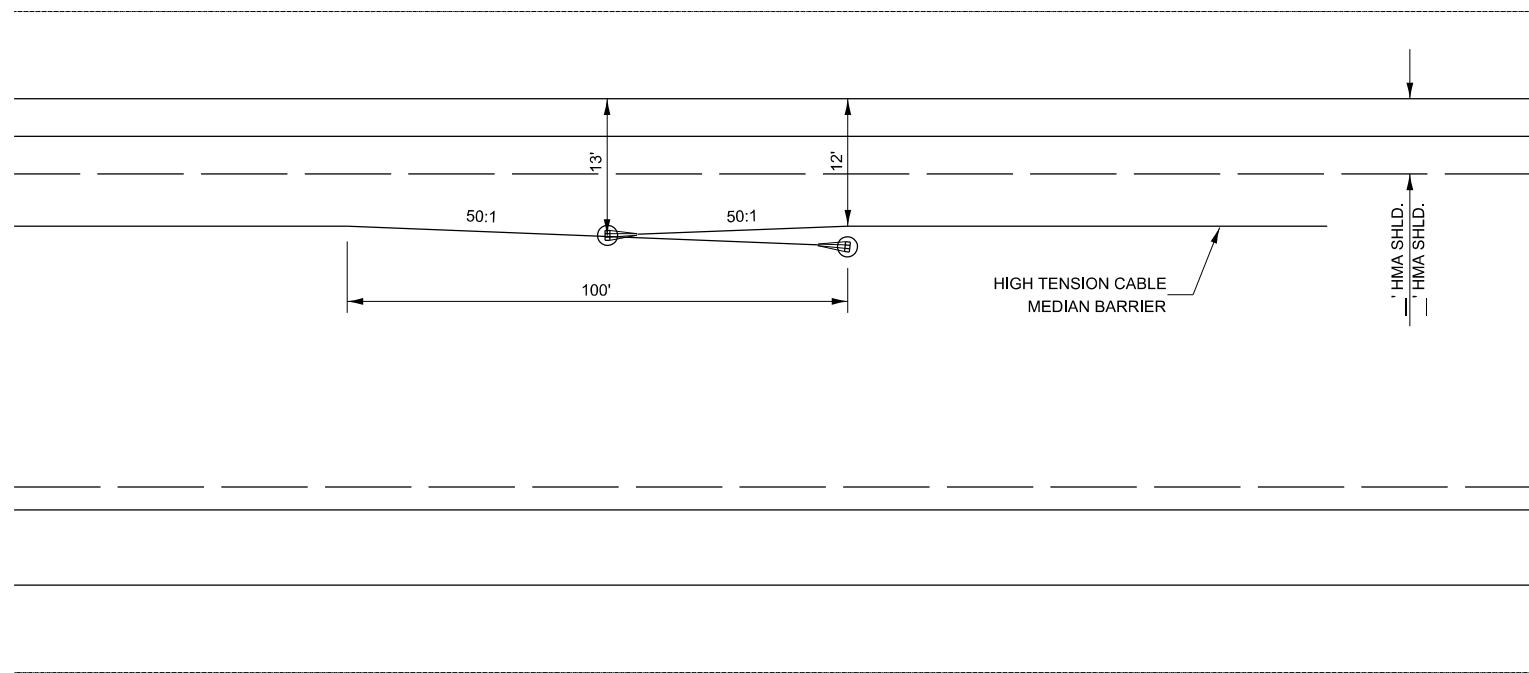
STATE OF ILLINOIS
DEPARTMENT OF TRANSPORTATION

SCALE: SHEET OF SHEETS STA. TO STA.

F.A. RTE.	SECTION	COUNTY	TOTAL SHEETS	SHEET NO.
CONTRACT NO.				
ILLINOIS FED. AID PROJECT				



MAINTENANCE CROSSOVERS **MEDIAN CROSSOVERS**



HIGH TENSION CABLE BARRIER OVERLAP DETAIL



MODEL dlet 3 details
FILE Name: s:\mws\caw.bentley.com\IN\DOT\Documents\DOT Offices\Director: 3\Projects\Caray Details\03 Detail Revisions 2023\604699 INCIDENTAL CONSTRUCTION.dgn

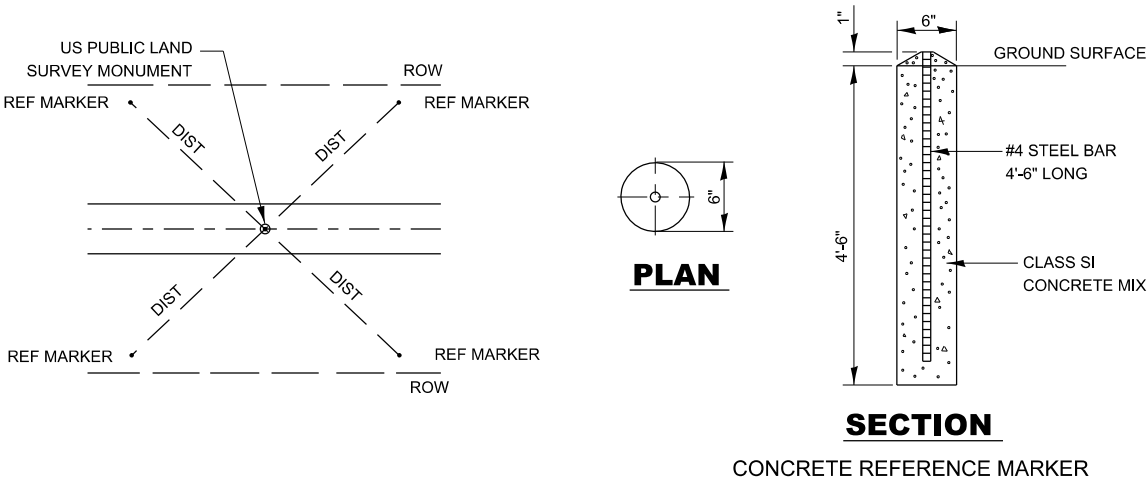
	USER NAME = anthony.grunstad	DESIGNED -	REVISED -	STATE OF ILLINOIS DEPARTMENT OF TRANSPORTATION	SCALE:		SHEET	OF	SHEETS	STA.	TO STA.	F.A. RTE.	SECTION	COUNTY	TOTAL SHEETS	SHEET NO.
	PLOT SCALE = 100,000 ' / in.	DRAWN -	REVISED -													
	PLOT DATE = 10/3/23	CHECKED -	REVISED -									CONTRACT NO.				
		DATE -	REVISED -									ILLINOIS	FED. AID PROJECT			

LAND SECTION MARKERS

NOTES

PERMANENT SURVEY MARKERS, OF THE TYPE SPECIFIED
SHALL BE PAID FOR AT THE CONTRACT UNIT PRICE, EACH, WHICH WILL BE PAYMENT IN FULL FOR FURNISHING, INSTALLING AND MARKING SAID MARKERS.

LAND SECTION MARKERS
SHALL BE PAID FOR AT THE CONTRACT UNIT PRICE, EACH, WHICH WILL BE PAYMENT IN FULL FOR SETTING TIE POINTS, SETTING FOUR CONCRETE REFERENCE MARKERS, PREPARING MONUMENT RECORDS, RECORDING AT COUNTY RECORDER'S OFFICE AND PROVIDING A COPY TO THE DISTRICT OFFICE.



MODEL dlet 3 details
FILE Name: s:\mws\caw.bentley.com\NWDOT\Documents\DOT Offices\District 3\Projects-Darcy Details\03 Detail Revisions 2023\606499 INCIDENTAL CONSTRUCTION.dgn

	USER NAME	= anthony.grunstad	DESIGNED	-	REVISED	-	STATE OF ILLINOIS DEPARTMENT OF TRANSPORTATION	SCALE: SHEET OF SHEETS STA. TO STA.			F.A. RTE.	SECTION	COUNTY	TOTAL SHEETS	SHEET NO.					
			DRAWN	-	REVISED	-														
	PLOT SCALE	= 100,000 ' / in.	CHECKED	-	REVISED	-														
	PLOT DATE	= 10/3/23	DATE	-	REVISED	-														
													CONTRACT NO.							
													ILLINOIS	FED. AID PROJECT						