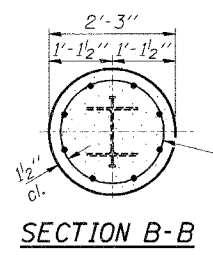
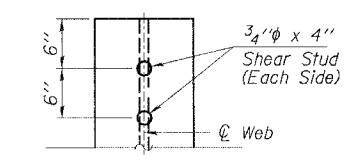


Hatched area to be poured after beams are in place and dowel rods grouted into cap. May be poured with Bridge Appr. Pvt.

Note: Extend h(E) bars into abut. cap and backwall.



Welded wire fabric 6x6-W4.0xW4.0 weighing 58#/100 sq. ft. The cost of Excavation and Reinforcement is included in the cost of Concrete Encasement. Form for encasement may be omitted when soil conditions will permit.



PILE DATA

Type	Steel HP14x73
No. Req'd.	8
Req'd Bearing Capacity	Drive To Refusal
Design Loading	66 Ton/Pile
Est. Length**	140 Feet/Pile

** All piles shall be driven below a minimum pile Elevation = 260.0

5 Tons of design loading is due to seismic liquefaction.

BILL OF MATERIAL - 2 ABUTS.

BAR	NO.	SIZE	LENGTH	SHAPE
h(E)	44	#4	6'-6"	—
h1(E)	12	#4	5'-6"	—
h2(E)	12	#4	30'-0"	—
p(E)	20	#9	31'-2"	—
s(E)	54	#5	10'-7"	□
u(E)	16	#6	12'-7"	—
v(E)	24	#4	4'-1"	—
v1(E)	24	#4	2'-5"	—
v2(E)	60	#4	6'-9"	—
v3(E)	124	#4	4'-3"	—
Concrete Structures			Cu. Yd.	27.0
Reinforcement Bars, Epoxy Coated			Pound	4,220
Name Plates			Each	1
Steel Pile HP14x73			Foot	1,120
Concrete Encasement			Cu. Yd.	3.6
Stud Shear Connectors			Each	32
Bridge Seat Sealer			Sq. Ft.	280

HLR

Rice, Berry and Associates
A Division of Hampton, Lenzini and Renwick, Inc.
Civil & Structural Engineers
801 S. Durkin Drive
Springfield, Illinois 62704
217-546-3400

P.O. Box 1036
DuQuoin, Illinois 62832
618-790-4631
Dates: 05/26/05

Account Number 12-38-0003-1
DESIGNED: T.P.L. | CHECKED: S.W.M. | DRAWN: D.B.

ABUTMENTS
SECTION 00-00065-00-BR
F.A.S. 888 / C.H. II
GALLATIN COUNTY
STR. NO. 030-3116 / STATION 10+00