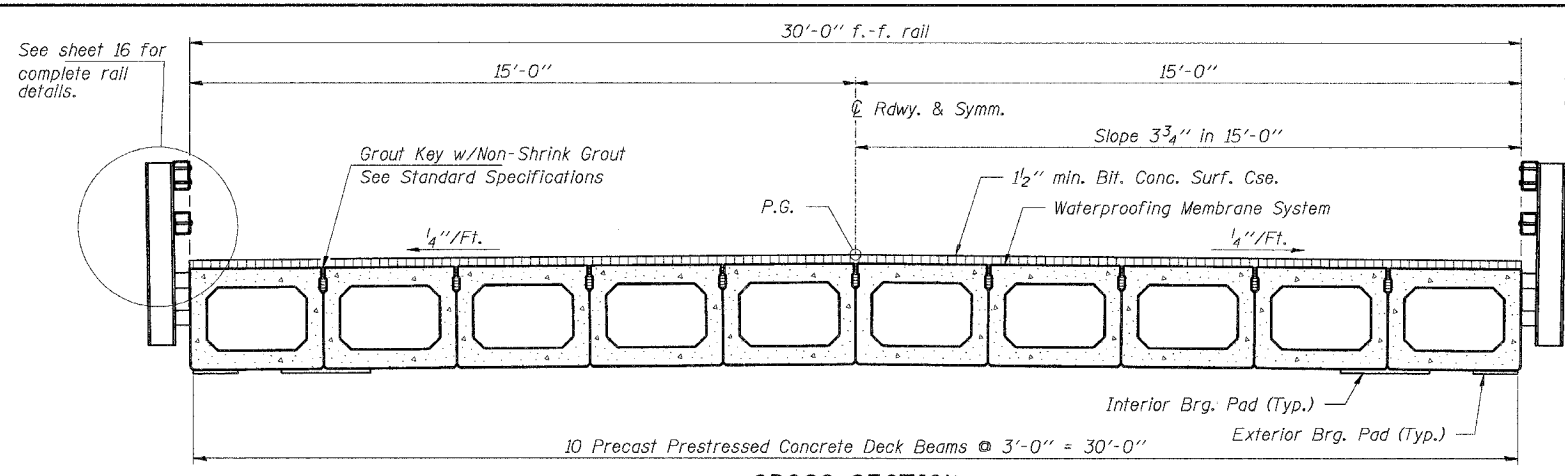
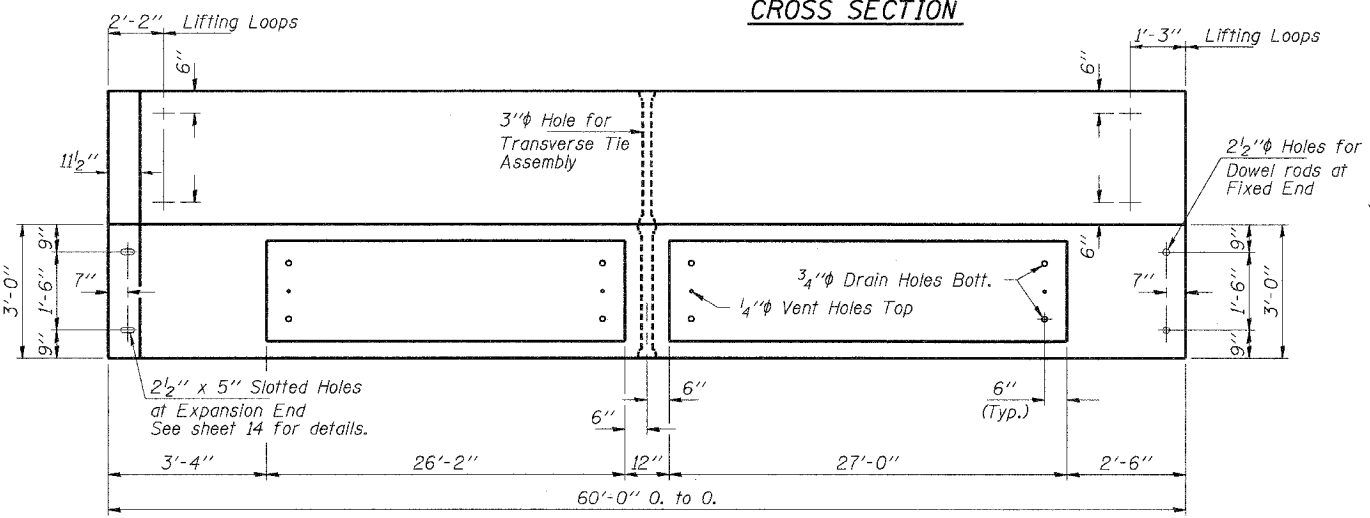


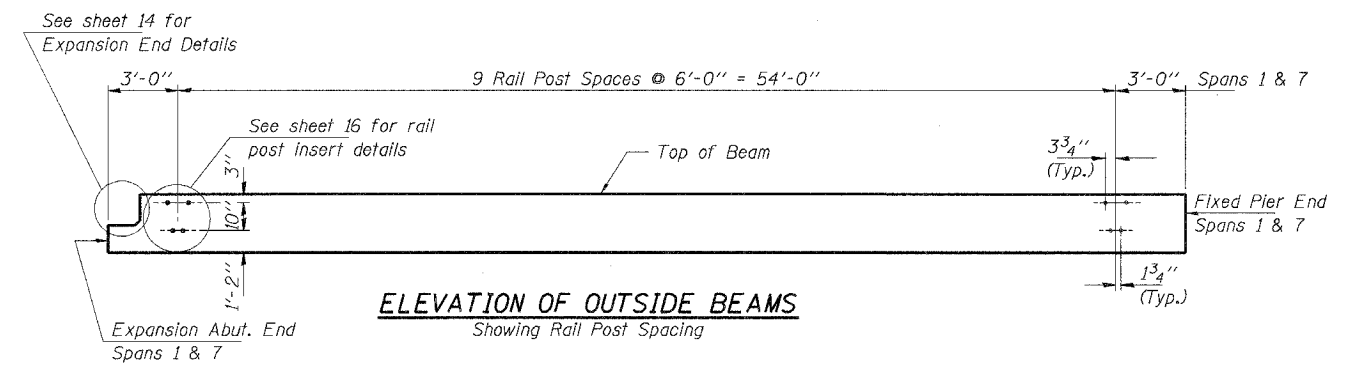
ROUTE NO.	SECTION	EQUITY	DATE	SHEET
F.A.S. 888	00-00065-00-BR	GALLATIN	22	12



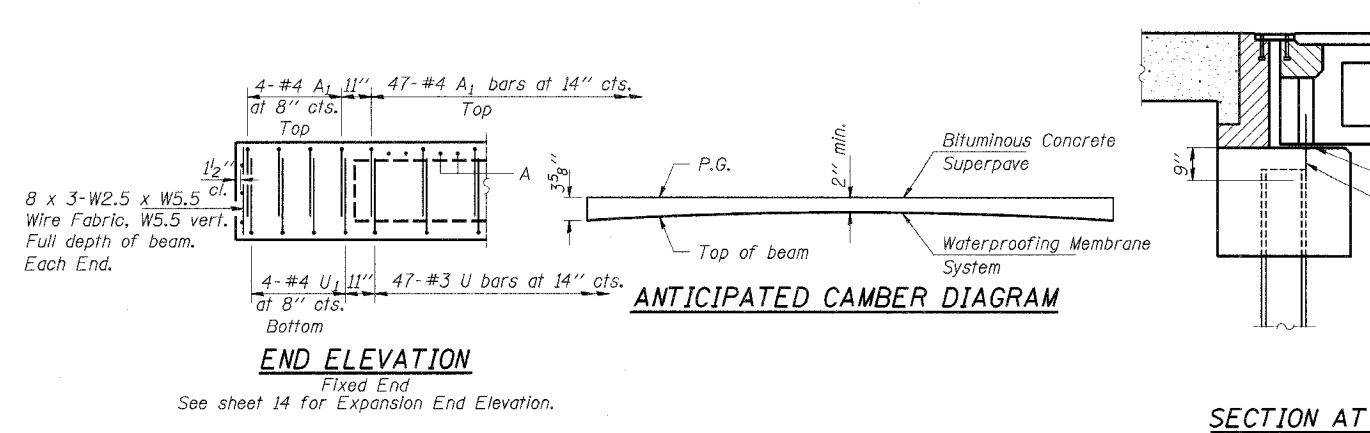
**CROSS SECTION**



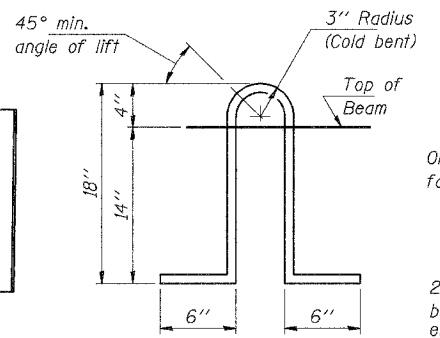
**PLAN**



**ELEVATION OF OUTSIDE BEAMS**  
Showing Rail Post Spacing

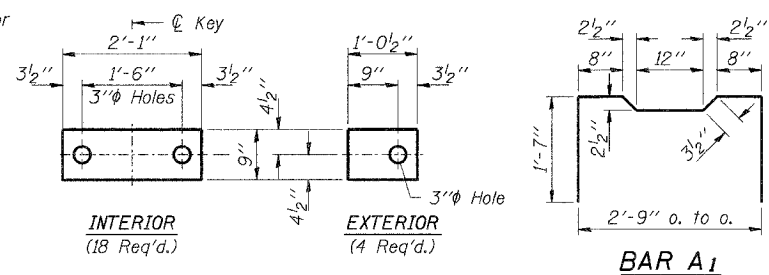


**END ELEVATION**

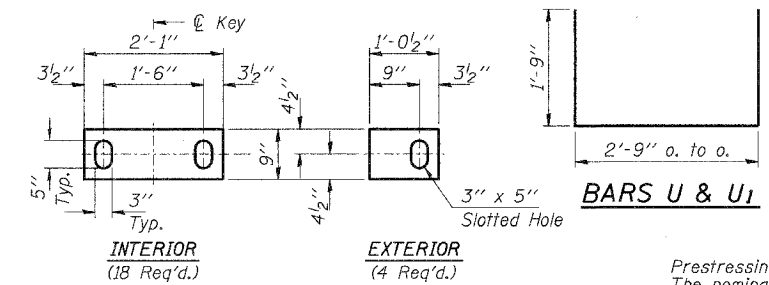


**LIFTING LOOP DETAIL**

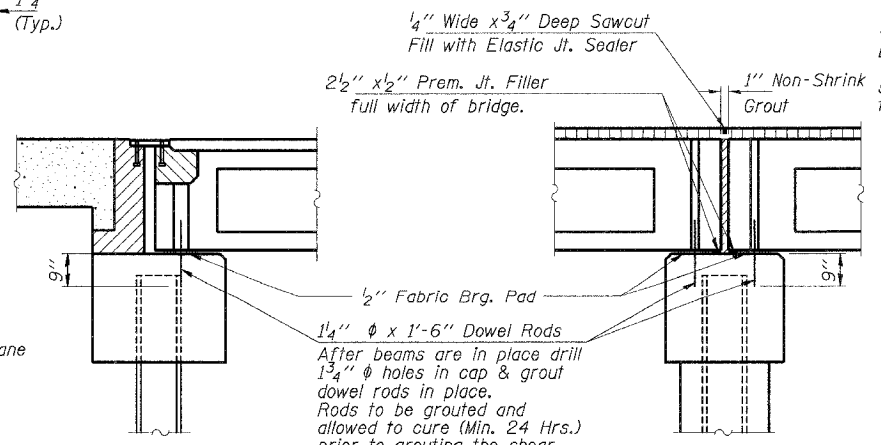
Note: The loop shall be formed in a manner such that all strands are engaged during lifting. Loops shall be cut off after the beams have been erected.



**FABRIC BEARING PAD DETAILS (Piers)**



**FABRIC BEARING PAD DETAILS (Abutments)**

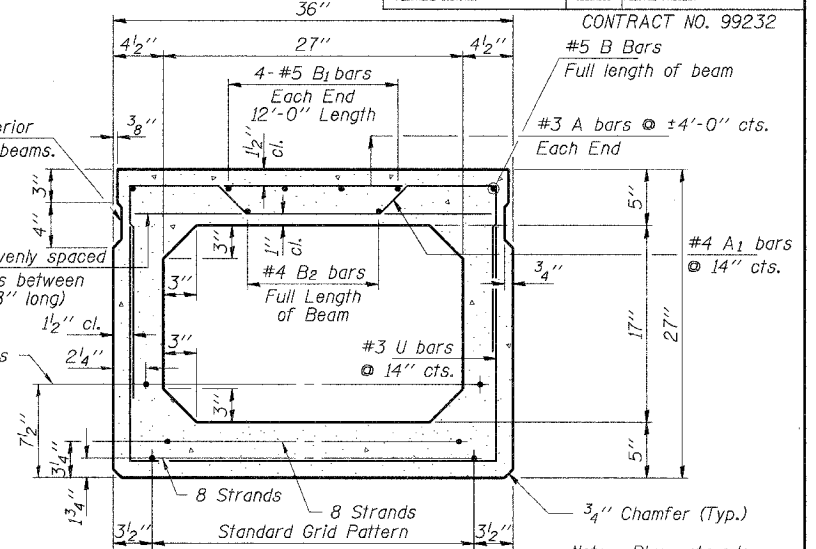


**SECTION AT ABUTMENTS**

**SECTION AT PIERS**

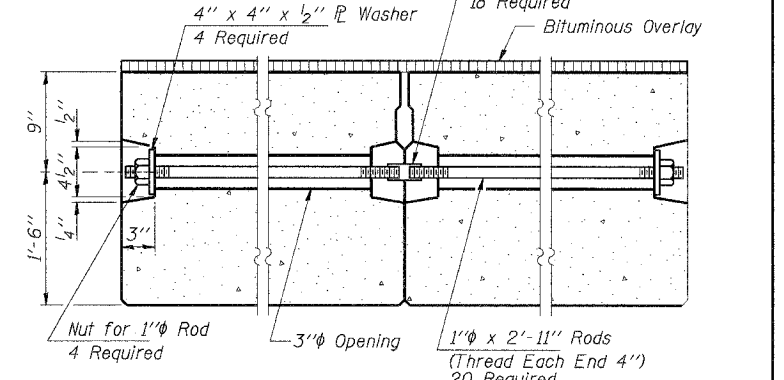
Omit key on exterior face of outside beams.

2-#3 A bars evenly spaced between A1 bars between end blocks (2'-8" long)



**TYPICAL SECTION**

18-1/2" Strands Each Strand Stressed to 30,900 Lbs.  
8-Strands 3/4" up, 8-Strands 3/4" up, 2-Strands 7/2" up  
Expected Camber = 1 3/8"



**TYPICAL TRANSVERSE TIE ASSEMBLY**

**NOTES**

Prestressing steel shall be uncoated high strength, stress-relieved 7-wire strand, Grade 270. The nominal diameter shall be 1/2" and the nominal cross-sectional area shall be 0.153 sq. in. Lifting loops shall be 7-wire stress-relieved 2-1/2"-270 ksi strands, as shown. The 1" rods in the transverse tie assembly shall be tightened to a snug fit and the threads set. Pockets that receive transverse tie bar on outside shall be filled with grout after transverse tie assembly is in place. Reinforcement bars shall conform to the requirements of AASHTO M31 or M322 Grade 60. The bearing seat surfaces shall be adjusted by shimming to assure firm and even bearing. Two 1/8" fabric adjusting shims of the dimensions of the Exterior Bearing Pad shall be provided for each bearing. Keyway surfaces shall be cleaned to remove form oil or other bond breaking material prior to shipment of the beams. Cleaning shall be done by sandblasting the keyway areas between top of the beam and the bottom edge of the key. Required Release Strength, f'ci, shall be 4,800 p.s.i. An equal substitution of the low-relaxation strands for the stress-relieved strands will be permitted. Weight of one Beam approximately 34,000 lbs.

**BILL OF MATERIAL**

ITEM	UNIT	QUANTITY
Precast Prestressed Concrete Deck Beams (27" Depth)	Sq. Ft.	3,600
Bit. Conc. Surf. Cse., Superpave, Mix C, N70	Ton	45
Waterproofing Membrane System	Sq. Yd.	399
P.C. Mortar Fairing Course	Foot	270

**HLR**  
Rice, Berry and Associates  
A Division of Hampton, Lenzini and Renwick, Inc.  
Civil & Structural Engineers  
801 S. Durkin Drive  
Springfield, Illinois 62704  
217-546-3400  
P.O. Box 1036  
DuQuoin, Illinois 62832  
618-790-4637  
Date: 05/26/05  
DESIGNED: T.P.L. CHECKED: S.W.M. DRAWN: D.B.

**SUPERSTRUCTURE - SPANS 1 & 7**  
SECTION 00-00065-00-BR  
F.A.S. 888 / C.H. II  
GALLATIN COUNTY  
STR. NO. 030-3116 / STATION 10+00