

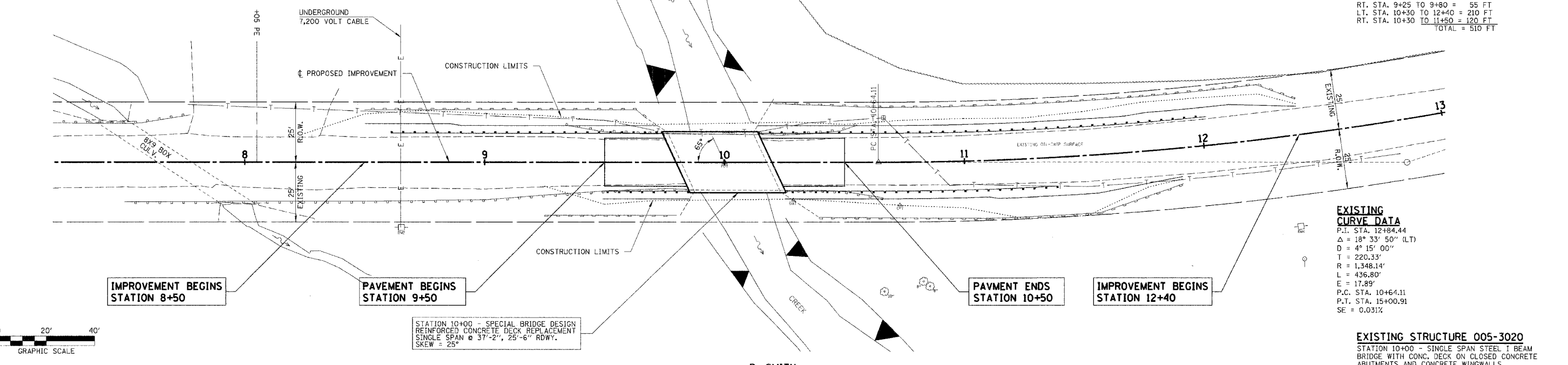
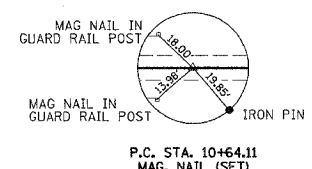
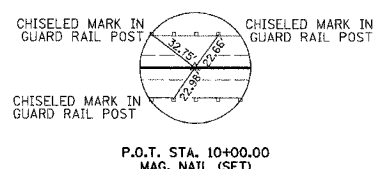
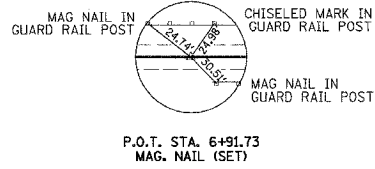
FAS	SECTION	COUNTY	TOTAL SHEETS	SHEET NO.
585 02-00063-00-BR	BROWN	16	3	
STA.		TO STA.		
FED. ROAD DIST. NO.		ILLINOIS CONTRACT NO.		

RICHARD ALSUP
NW 1/4, SE 1/4, NW 1/4, SEC 8, T. 2 S., R. 2 W., 4TH P.M.

D. SMITH
SE 1/4, SE 1/4, NW 1/4, SEC 8, T. 2 S., R. 2 W., 4TH P.M.

DATE: _____ BY: _____
 SURVEYED: _____
 ALIGNED: _____
 CHECKED: _____
 P.L.O.F. BY: _____
 NO. REVISIONS: _____

DATE: _____ BY: _____
 SURVEYED: _____
 GRADES CHECKED: _____
 P.L.O.F. BY: _____
 NO. REVISIONS: _____



PERIMETER EROSION BARRIER
 LT. STA. 8+50 TO 9+75 = 125 FT
 RT. STA. 9+25 TO 9+80 = 55 FT
 LT. STA. 10+30 TO 12+40 = 210 FT
 RT. STA. 10+30 TO 11+50 = 120 FT
TOTAL = 510 FT

EXISTING CURVE DATA
 P.I. STA. 12+84.44
 $\Delta = 18^\circ 33' 50''$ (LT)
 $D = 4^\circ 15' 00''$
 $T = 220.33'$
 $R = 1,348.14'$
 $L = 436.80'$
 $E = 17.89'$
 P.C. STA. 10+64.11
 P.T. STA. 15+00.91
 $SE = 0.031\%$

EXISTING STRUCTURE 005-3020
 STATION 10+00 - SINGLE SPAN STEEL I BEAM BRIDGE WITH CONC. DECK ON CLOSED CONCRETE ABUTMENTS AND CONCRETE WINGWALLS 40'-0" BK. TO BK. ABUTS; 23.41' o.-o. DECK. REMOVAL OF EXISTING CONCRETE DECK = 1 EACH

IMPROVEMENT BEGINS STATION 8+50

PAVEMENT BEGINS STATION 9+50

PAVEMENT ENDS STATION 10+50

IMPROVEMENT BEGINS STATION 12+40

STATION 10+00 - SPECIAL BRIDGE DESIGN REINFORCED CONCRETE DECK REPLACEMENT SINGLE SPAN @ 37'-2", 25'-6" RDWY. SKEW = 25°

