

# STATE OF ILLINOIS

## DEPARTMENT OF TRANSPORTATION

### DIVISION OF HIGHWAYS

# PLANS FOR PROPOSED BRIDGE REPLACEMENT AND REHABILITATION PROGRAM

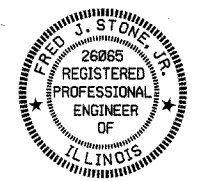
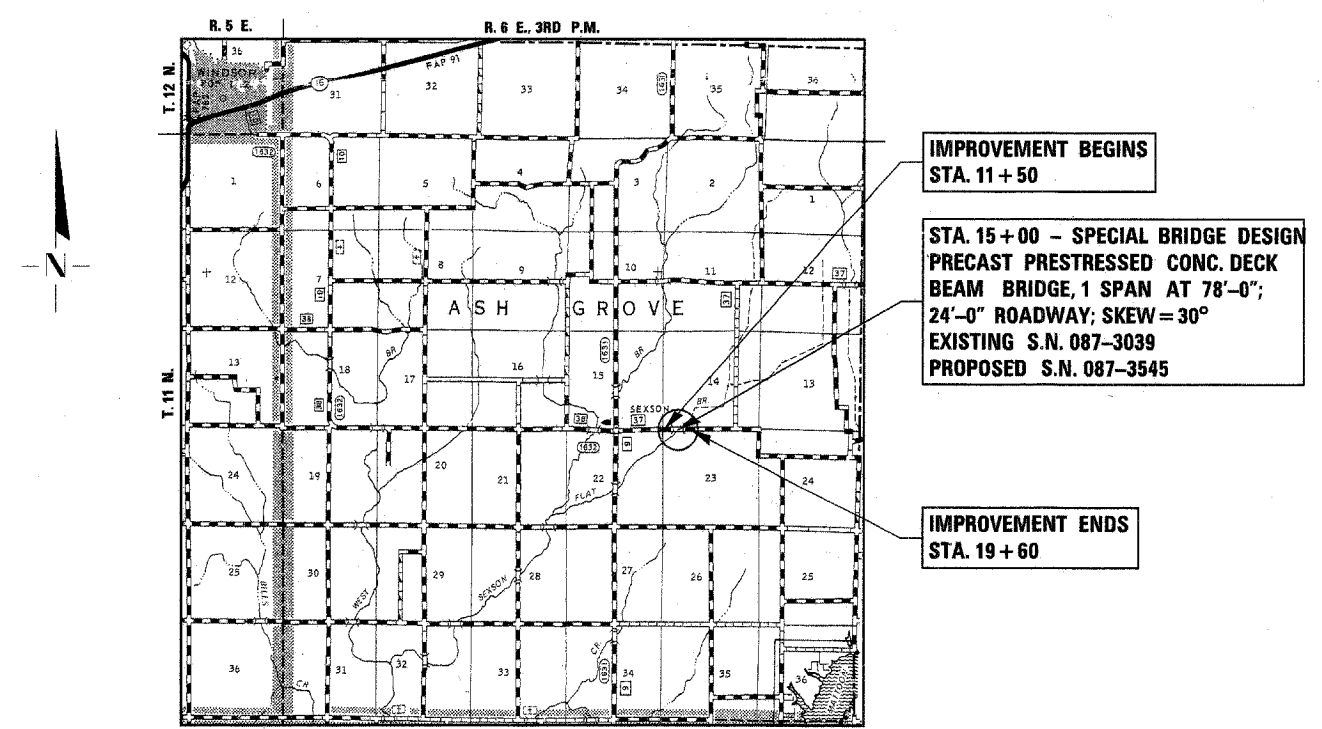
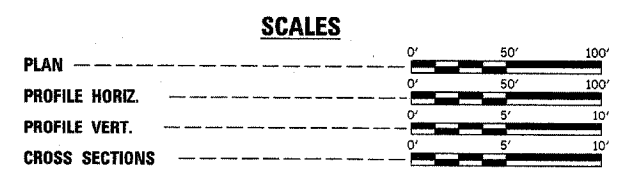
**ASH GROVE ROAD DISTRICT**  
**SECTION 03-01123-00-BR**  
**SHELBY COUNTY**  
**PROJECT NO. BROS-173(129)**  
**T.R. ROUTE 205**  
**JOB NO. : C-95-314-05**

**INDEX OF SHEETS**

SHEET NO.	TITLE
1.	COVER SHEET
2.	SUMMARY OF QUANTITIES, GENERAL NOTES & TYPICAL SECTIONS
3.	PLAN AND PROFILE SHEET
4.-7.	BRIDGE PLANS
8.-12.	STATION CROSS SECTIONS
13.	EROSION CONTROL PLAN

**STANDARDS:**

000001-04	STANDARD SYMBOLS, ABBREVIATIONS AND PATTERNS
280001-02	TEMPORARY EROSION CONTROL
515001-02	NAME PLATE FOR BRIDGES
542301	PRECAST REINFORCED CONCRETE FLARED END SECTIONS
602301	INLET - TYPE A
604036-01	GRATE TYPE 8
630001-05	STEEL PLATE BEAM GUARDRAIL
631026-02	TRAFFIC BARRIER TERMINAL TYPE 5 & 5A
BLR 21-6	TYPICAL APPLICATION OF TRAFFIC CONTROL DEVICES FOR CONSTRUCTION ON RURAL LOCAL HIGHWAYS



*Fred J. Stone, Jr.* (7-12-05)  
ILLINOIS PROFESSIONAL NO. 26065

TOLL FREE JOINT UTILITY LOCATING  
INFORMATION FOR EXCAVATORS (J.U.L.I.E.)  
TELEPHONE NUMBER 1-800-892-0123

PASSED	<i>14 July 2005</i>	2005
<i>Wa. Bill Calam</i> ASH GROVE ROAD DISTRICT COMMISSIONER		
APPROVED	<i>107-14</i>	2005
<i>David A. Sil</i> SHELBY COUNTY ENGINEER		
PASSED	<i>7/21</i>	2005
<i>David A. Sil</i> DISTRICT FIVE ENGINEER OF LOCAL ROADS & STREETS		
RELEASED FOR BID BASED ON LIMITED REVIEW	<i>July 22</i>	2005
<i>Joseph E. Lume</i> DEPUTY DIRECTOR OF HIGHWAYS REGION THREE ENGINEER		
STATE OF ILLINOIS DEPARTMENT OF TRANSPORTATION		

**SUMMARY OF QUANTITIES**

X081-2A

NUMBER	ITEM	UNIT	QUANTITY
20200100	EARTH EXCAVATION	CU YD	711
20300100	CHANNEL EXCAVATION	CU YD	280
20400800	FURNISHED EXCAVATION	CU YD	1516
20800150	TRENCH BACKFILL	CU YD	6
25000200	SEEDING, CLASS 2	ACRE	0.9
25000400	NITROGEN FERTILIZER NUTRIENT	POUND	81
25000500	PHOSPHORUS FERTILIZER NUTRIENT	POUND	81
25000600	POTASSIUM FERTILIZER NUTRIENT	POUND	81
25100115	MULCH, METHOD 2	ACRE	0.9
28000250	TEMPORARY EROSION CONTROL SEEDINGS	POUND	300
28000300	TEMPORARY DITCH CHECKS	EACH	4
28000400	PERIMETER EROSION BARRIER	FOOT	1075
28000500	INLET AND PIPE PROTECTION	EACH	4
28100207	STONE RIPRAP, CLASS A4	TON	208
28200200	FILTER FABRIC	SQ YD	262
40200800	AGGREGATE SURFACE COURSE, TYPE B	TON	783
50100100	REMOVAL OF EXISTING STRUCTURES	EACH	1
50200100	STRUCTURE EXCAVATION	CU YD	40
50300225	CONCRETE STRUCTURES	CU YD	27.2
50400605	PRECAST PRESTRESSED CONCRETE DECK BEAMS (33" DEPTH)	SQ FT	1872
50800105	REINFORCEMENT BARS	POUND	3140
50900205	STEEL RAILING, TYPE S1	FOOT	156
51201600	FURNISHING STEEL PILES HP12X53	FOOT	280
51202700	DRIVING STEEL PILES	FOOT	280
51203600	TEST PILE STEEL HP12X53	EACH	2
51204315	CONCRETE ENCASEMENT	CU YD	5.5
51500100	NAME PLATES	EACH	1
54200220	PIPE CULVERTS, CLASS D, TYPE 1 15"	FOOT	36
54200223	PIPE CULVERTS, CLASS D, TYPE 1 18"	FOOT	34
54213657	PRECAST REINFORCED CONCRETE FLARED END SECTIONS 12"	EACH	1
550A0050	STORM SEWERS, CLASS A, TYPE 1 12"	FOOT	168
60103300	PIPE DRAINS, CORRUGATED STEEL 8"	FOOT	15
60236200	INLETS, TYPE A, TYPE 8 GRATE	EACH	2
67100100	MOBILIZATION	L SUM	1
78201000	TERMINAL MARKER - DIRECT APPLIED	EACH	4

\*SEE SPECIAL PROVISIONS

**GENERAL NOTES**

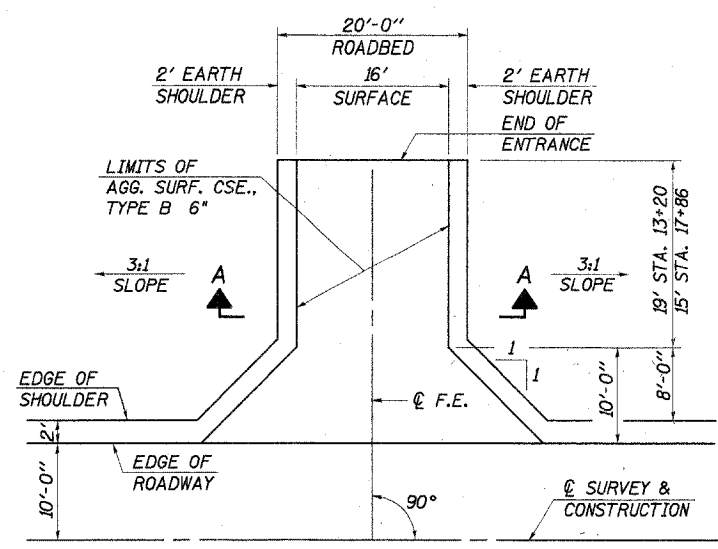
WHERE SECTION OR SUBSECTION MONUMENTS ARE ENCOUNTERED, THE ENGINEER SHALL BE NOTIFIED BEFORE SUCH MONUMENTS ARE REMOVED. THE CONTRACTOR SHALL PROTECT AND CAREFULLY PRESERVE ALL PROPERTY MARKS AND MONUMENTS UNTIL THE OWNER, AND AUTHORIZED SURVEYOR OR AGENT HAS WITNESSED OR OTHERWISE REFERENCED THEIR LOCATION.

THE AREA TO BE SEEDED SHALL CONSIST OF ALL DISTURBED EARTH SURFACES WITHIN THE RIGHT OF WAY, AS DIRECTED BY THE ENGINEER.

**ESTIMATED QUANTITIES**

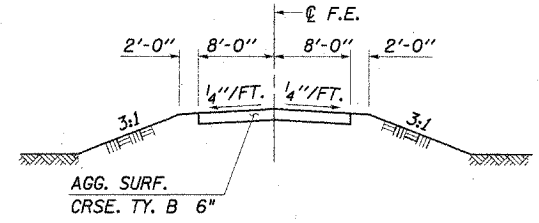
ITEM	RATE OF APPLICATION	QUANTITIES
SEEDING, CLASS 2		0.9 ACRE
NITROGEN FERTILIZER NUTRIENT	90 LBS/ACRE	81 POUNDS
PHOSPHORUS FERTILIZER NUTRIENT	90 LBS/ACRE	81 POUNDS
POTASSIUM FERTILIZER NUTRIENT	90 LBS/ACRE	81 POUNDS
MULCH METHOD 2	2 TON / ACRE	0.9 ACRE

THE SEEDING MIXTURE USED SHALL CONFORM TO ROADSIDE MIXTURE TYPE 2, EXCEPT DURING THE PERIOD BETWEEN NOVEMBER 1 AND DECEMBER 31. THE CONTRACTOR SHALL SUBSTITUTE 25 POUNDS OF PERENNIAL RYE FOR 48 POUNDS OF OATS, SPRING.

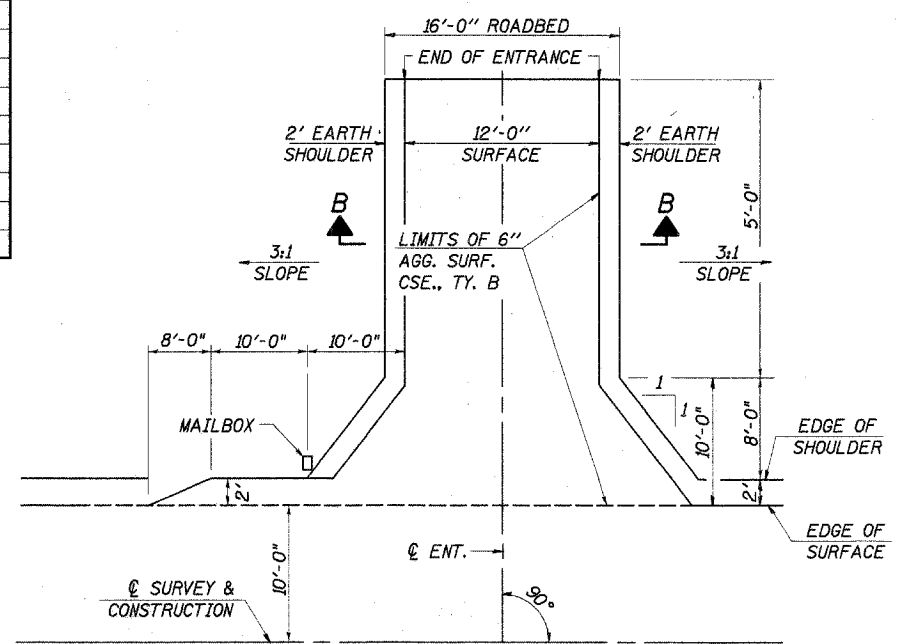


**FIELD ENTRANCE DETAIL**

F.E. RT. STA. 13+20  
F.E. LT. STA. 17+86

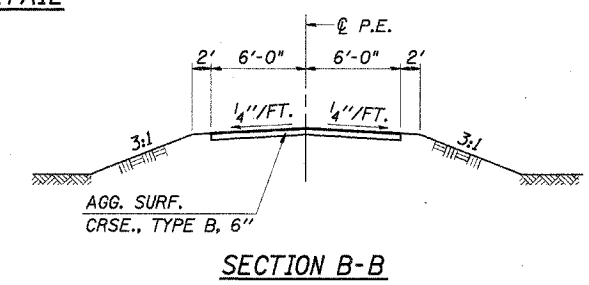


**SECTION A-A**

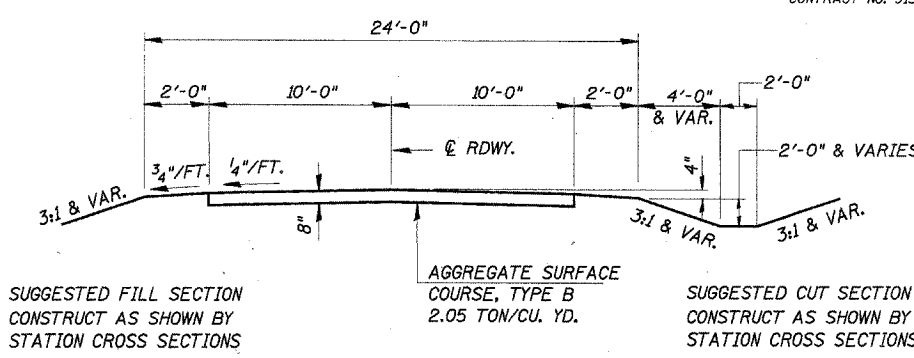


**PRIVATE ENTRANCE W/ MAILBOX TURNOUT DETAIL**

LT. STA. 12+56



**SECTION B-B**

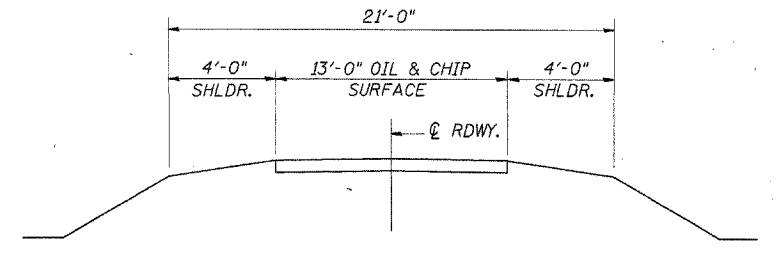


**TYPICAL PROPOSED CROSS SECTION**

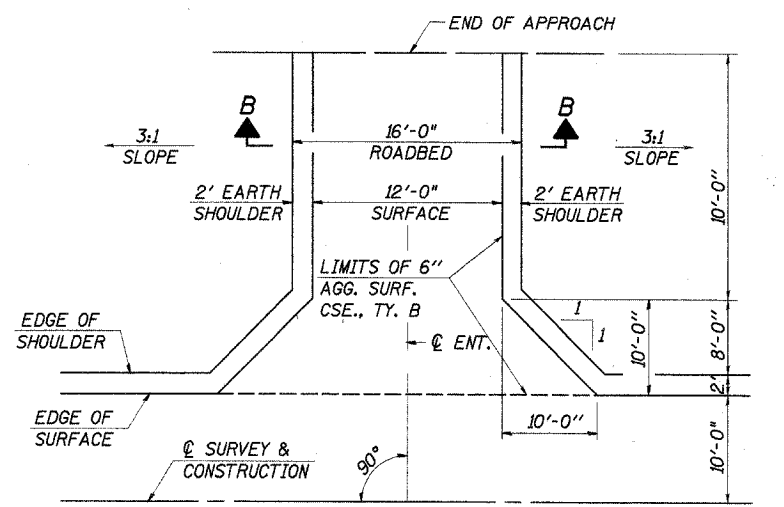
STA. 12+50 TO STA. 18+60

ROAD CLASSIFICATION: LOCAL ROAD ADT 0-250  
CURRENT ADT LESS THAN 150

TRANSITION FROM EXISTING ROADWAY TO PROPOSED ROADWAY TO BE CONSTRUCTED FROM STA. 11+50 TO STA. 12+50 AND FROM STA. 18+60 TO STA. 19+60.



**EXISTING TYPICAL CROSS SECTION**



**PRIVATE ENTRANCE DETAIL**

LT. STA. 13+10

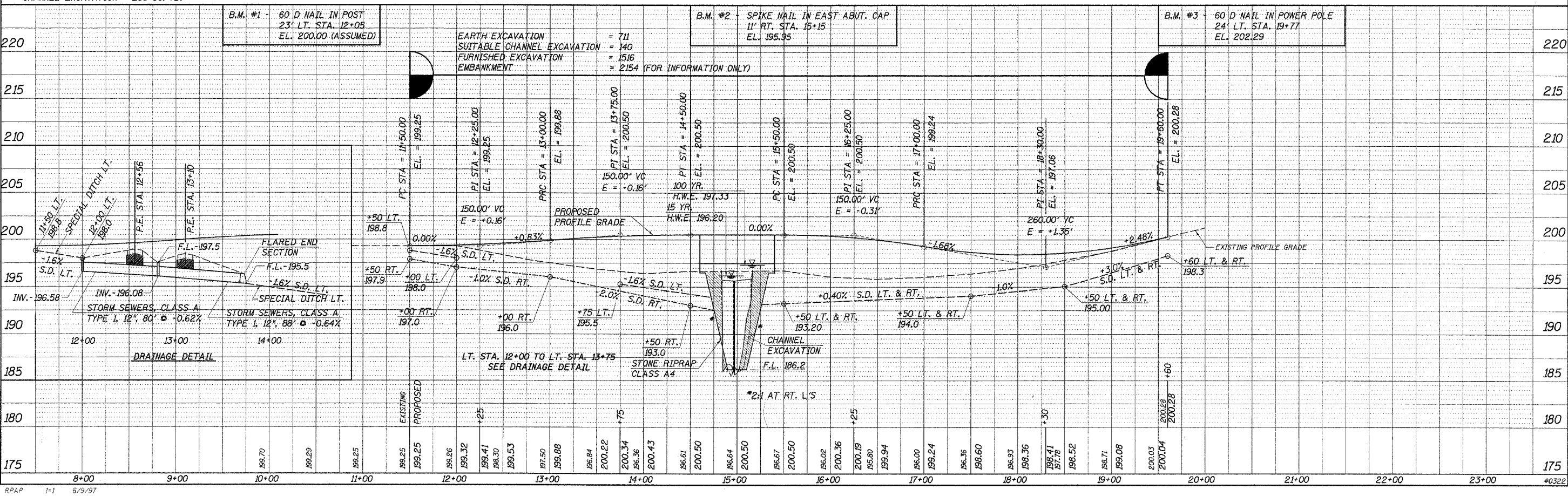
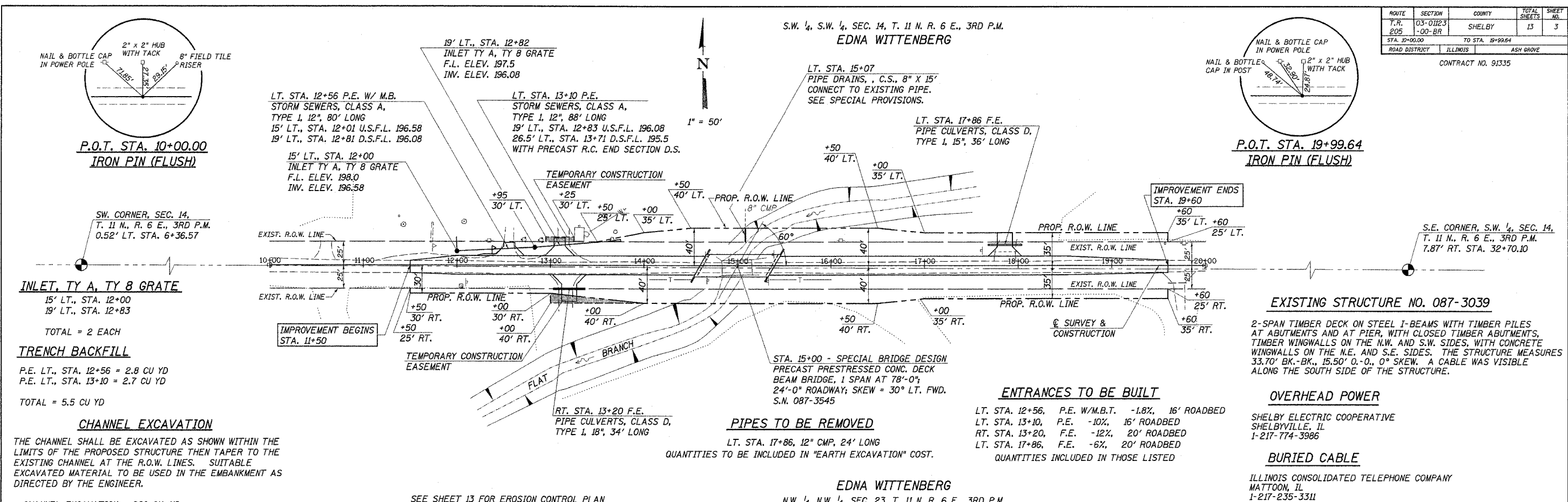
**SUMMARY OF QUANTITIES, GENERAL NOTES AND TYPICAL CROSS SECTION**  
SECTION 03-01123-00-BR  
ASH GROVE ROAD DISTRICT  
SHELBY COUNTY  
STATION 15+00

4440 ASH GROVE  
SPRINGFIELD, IL 62711  
(217) 793-8600  
oasinc@famvid.com

**OZYURT AND STONE, INC.**  
CONSULTING ENGINEERS

JOB NO.: 0322  
FILE: 0322TYP.DWG  
DATE: 07/12/05

ROUTE	SECTION	COUNTY	TOTAL SHEETS	SHEET NO.
T.R. 205	03-0123-00-BR	SHELBY	13	3
STA. 10+00.00	TO STA. 19+99.64			
ROAD DISTRICT	ILLINOIS	ASH GROVE		
CONTRACT NO. 91335				



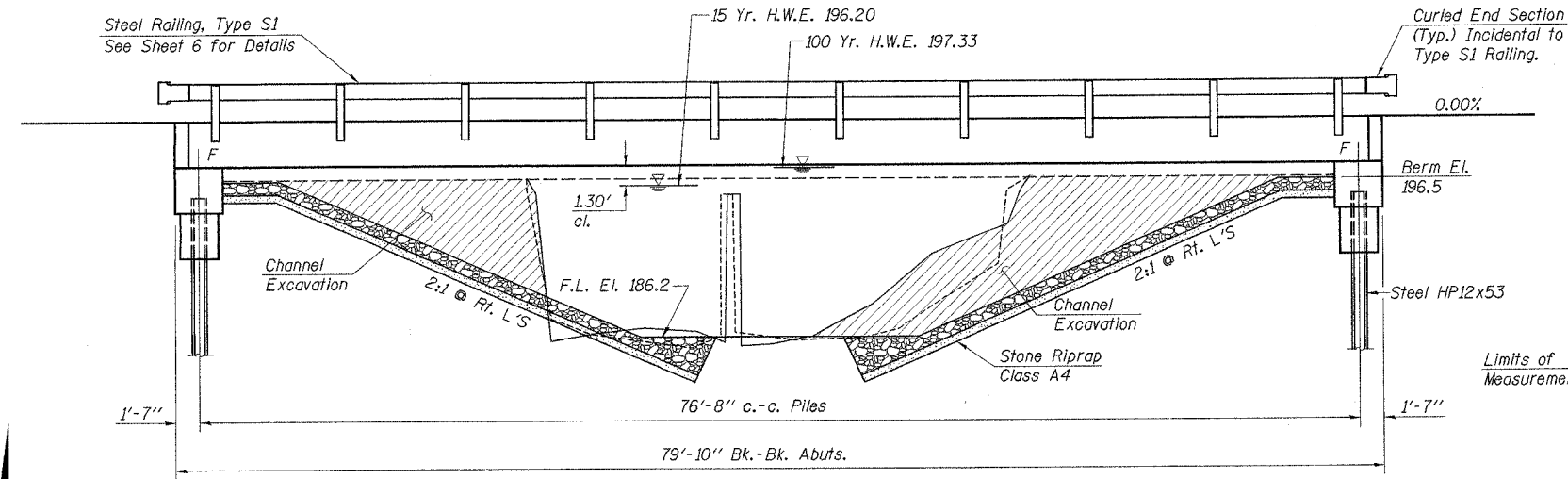
DATE	
BT	
PLANNED	
CHECKED	
APPROVED	
NO.	

DATE	
BT	
PROFILE SURVEY	
CHECKED	
APPROVED	
NO.	

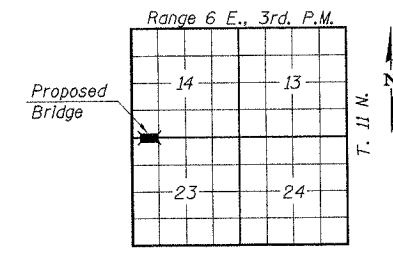
RPAP 1-1 6/9/97

#0322

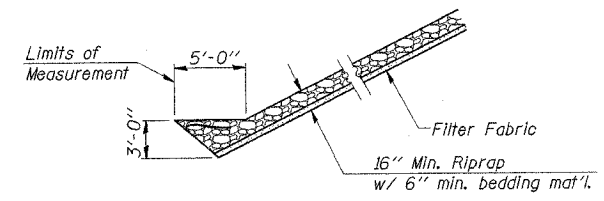
ROUTE NO.	SECTION	COUNTY	TOTAL SHEETS	SHEET NO.
T.R. 205	03-01123-00-BR	SHELBY	13	4
ROAD DIST.	ILLINOIS		ASH GROVE	
CONTRACT NO. 91335				



**ELEVATION**



**LOCATION PLAN**



**SECTION A-A  
RIPRAP PLACEMENT DETAIL**

**GENERAL NOTES**

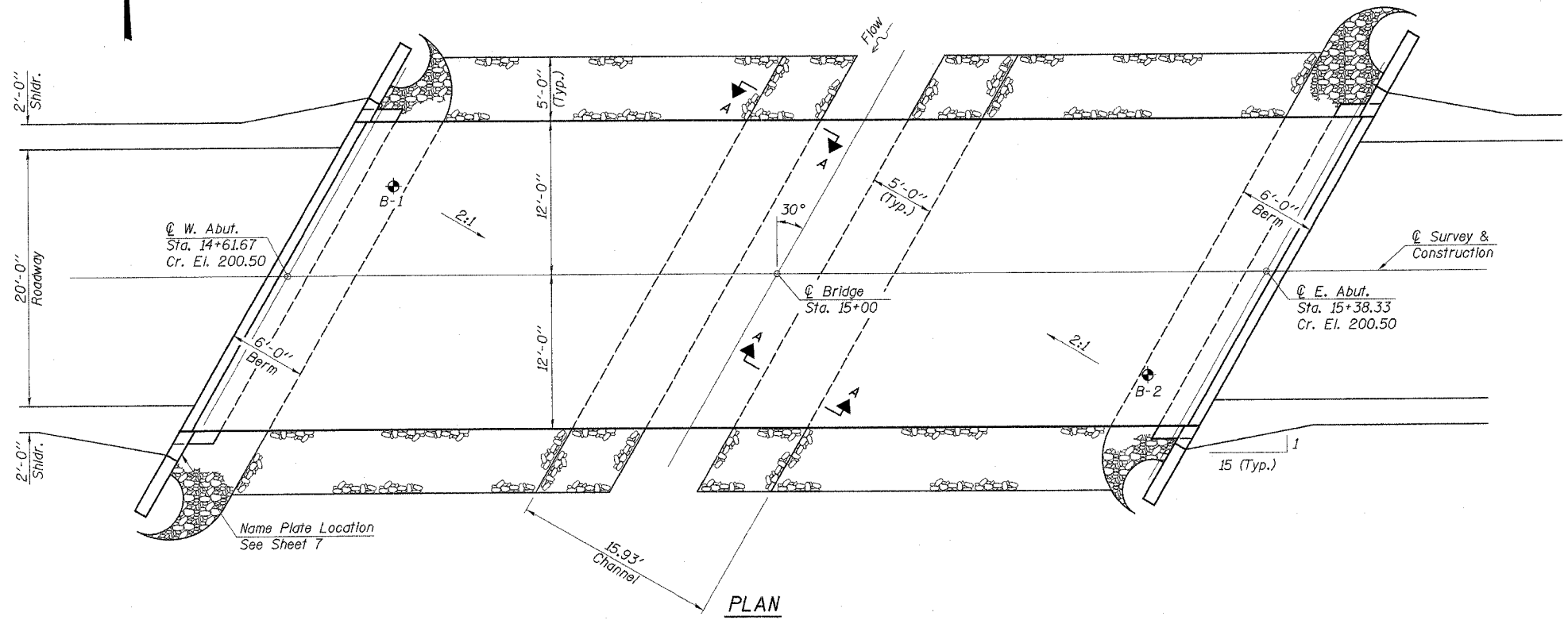
See Proposal for Boring data.

Reinforcement bars shall conform to the requirements of AASHTO M-31, M-42 or M-53, Grade 60.

The Contractor shall drive one steel test pile in a permanent location at each abutment as directed by the Engineer, before ordering the remainder of piles.

Layout of slope protection system may be varied in the field to suit ground conditions as directed by the Engineer.

Excavation for structures shall be considered as included in the contract unit price for the class of concrete involved.



**PLAN**

**DESIGN STRESSES**

$f'_c = 5,000$  p.s.i. (Prestressed Beams)  
 $f_{ol} = 4,000$  p.s.i. (Prestressed Beams)  
 $f'_c = 1,400$  p.s.i. (Concrete)  
 $f'_s = 270,000$  p.s.i. (Prestressed Strands)  
 $f_{sl} = 201,960$  p.s.i. (Prestressed Strands)  
 $f_s = 24,000$  p.s.i. (Reinf. Bars -- Field Units)  
 $f_y = 60,000$  p.s.i. (Reinf. Bars -- Field Units)  
 $n = 9$  (Concrete)  
 LOADING HS20-44  
 Design Specifications: 2002 AASHTO  
 25#/Sq. Ft. included in dead load for future wearing surface.

**WATERWAY INFORMATION**

Drainage Area	3.62 Sq. Mi.
Existing Opening (15 Yr.)	213 Sq. Ft.
Existing Over The Road (15 Yr.)	84 Sq. Ft.
Required Opening (15 Yr.)	362 Sq. Ft.
Proposed Opening (15 Yr.)	362 Sq. Ft.
Design Discharge (15 Yr.)	1153 C.F.S.
Created Head (15 Yr.)	0.04 Ft.
100 Year Discharge	1885 C.F.S.
100 Yr. Created Head	0.20 Ft.

DESIGNED	F.J.S.
CHECKED	S.F.M.
DRAWN	K.T.R. & S.A.P.
CHECKED	F.J.S.

**FLAT BRANCH  
 BUILT 200\_ BY  
 ASH GROVE ROAD DISTRICT  
 SHELBY COUNTY  
 SEC. 03-01123-00-BR  
 F.A. PROJ. BROS-173(129)  
 STR. NO. 087-3545 LOADING HS20**

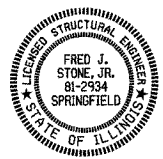
**LETTERING FOR NAME PLATE**  
 See Std. 515001

**TOTAL BILL OF MATERIAL**

ITEM	UNIT	SUPER	SUB	TOTAL
Precast Prestressed Concrete Deck Beams (33" Depth)	Sq. Ft.	1872		1872
Concrete Structures	Cu. Yd.		27.2	27.2
Reinforcement Bars	Pound		3140	3140
Steel Railing, Type S1	Foot	156		156
Name Plates	Each		1	1
Steel Piles HP12x53	Foot		280	280
Test Pile Steel HP12x53	Each		2	2
Stone Riprap, Class A4	Ton		208	208
Filter Fabric	Sq. Yd.		262	262
Concrete Encasement	Cu. Yd.		5.5	5.5

"I certify that to the best of my knowledge, information and belief, this bridge design is structurally adequate for the design loading shown on the plans. The design is an economical one for the style of structure and complies with requirements of the current 'AASHTO Standard Specifications for Highway Bridges'."

*Fred J. Stone, Jr.* (7-12-05)  
 ILLINOIS STRUCTURAL NO. 2934 (Expires 11/30/06)

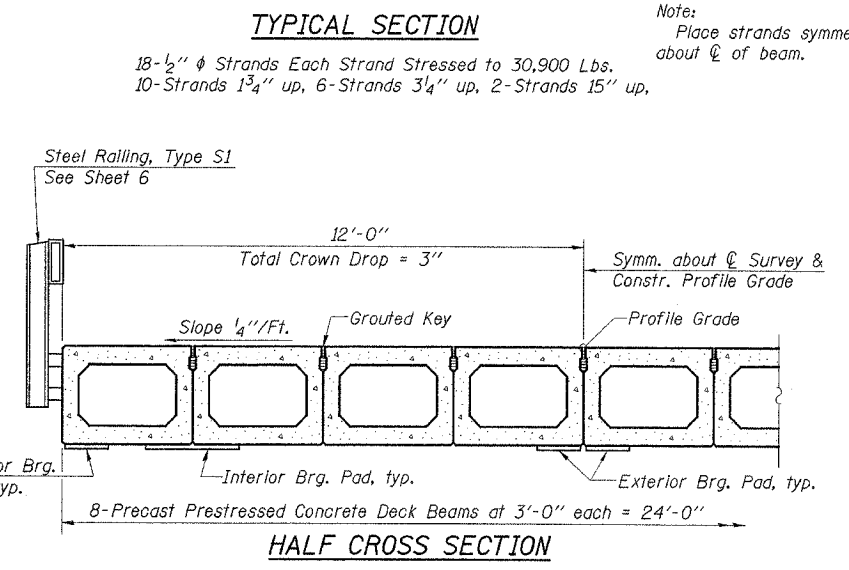
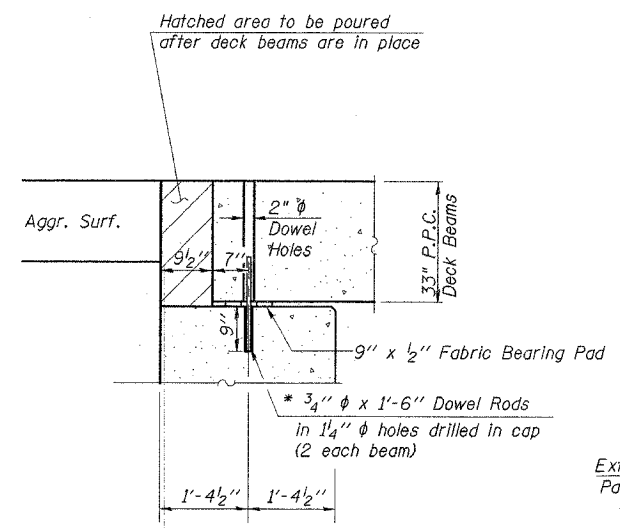
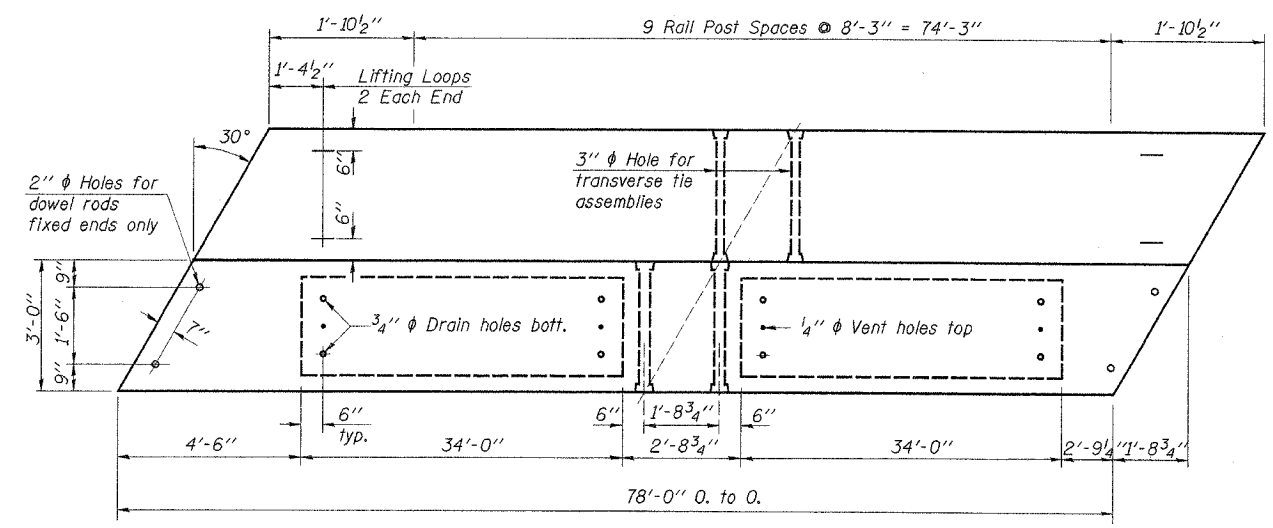
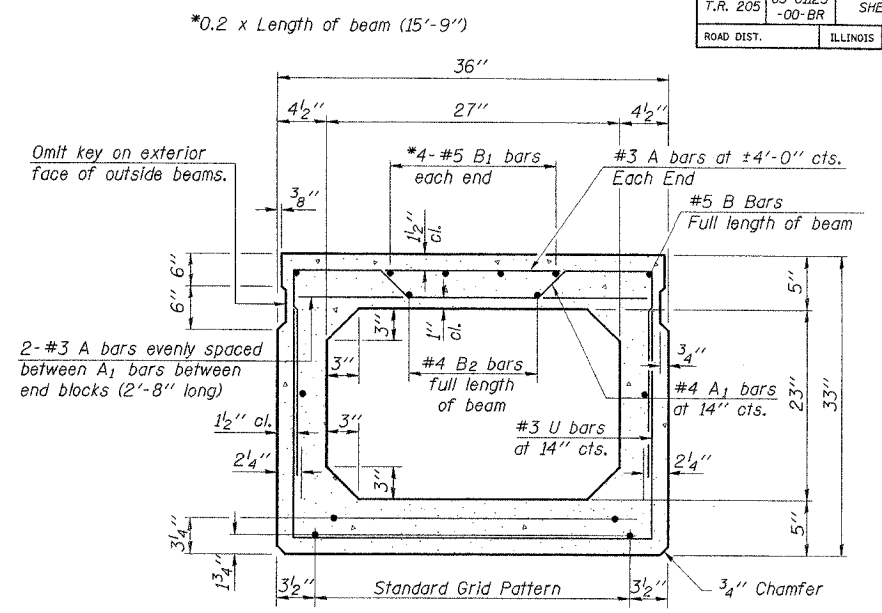
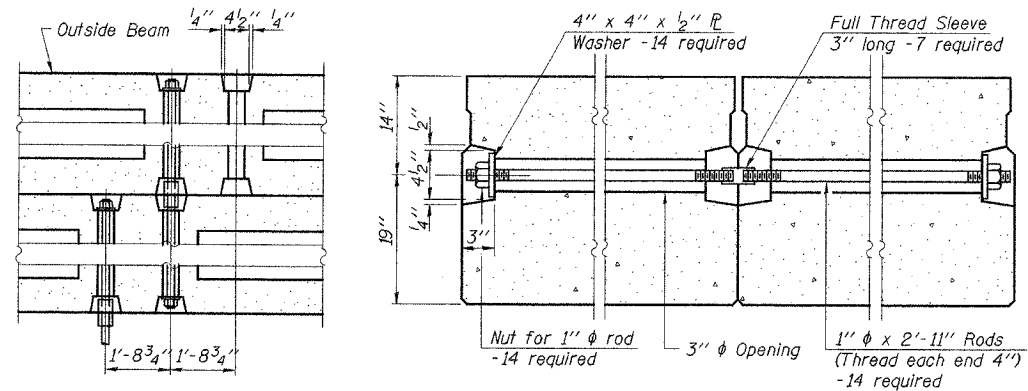
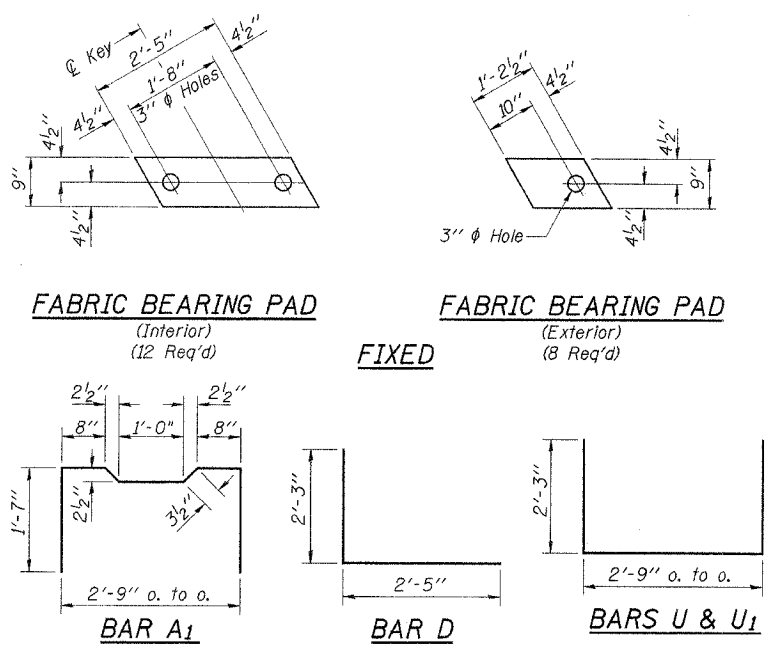


**GENERAL PLAN & ELEVATION**

**SECTION 03-01123-00-BR  
 ASH GROVE ROAD DISTRICT  
 SHELBY COUNTY  
 STATION 15+00**

4440 ASH GROVE SPRINGFIELD, IL 62711 (217) 793-8600 oasinc@tamvid.com	<b>OZYURT AND STONE, INC.</b> CONSULTING ENGINEERS	JOB NO.: 0322 FILE: 03226FE.DGN DATE: 07/12/05
--------------------------------------------------------------------------------	-------------------------------------------------------	------------------------------------------------------

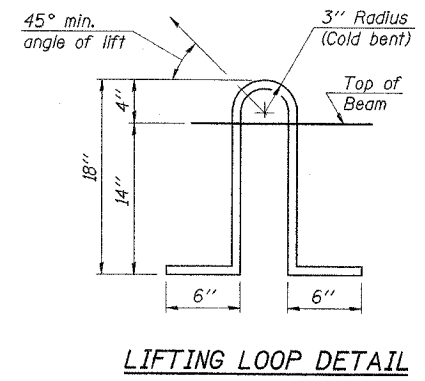
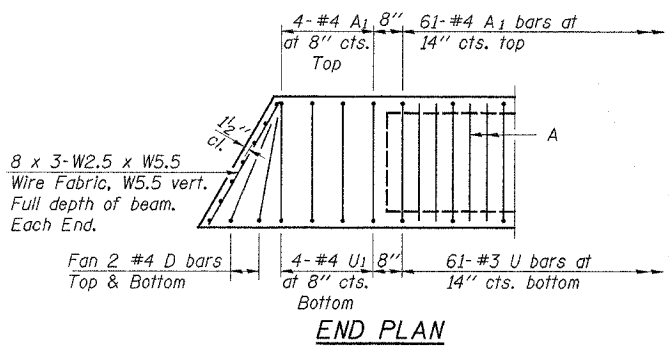
ROUTE NO.	SECTION	COUNTY	TOTAL SHEETS	SHEET NO.
T.R. 205	03-01123-00-BR	SHELBY	13	5
ROAD DIST.	ILLINOIS	ASH GROVE		
CONTRACT NO. 91335				



Note: Place strands symmetrically about C of beam.

18-1/2" x 3/4" Strands Each Strand Stressed to 30,900 Lbs.

10-Strands 1 3/4" up, 6-Strands 3/4" up, 2-Strands 15" up,



\*Dowel Rods to be grouted after beams are in place and allowed to cure (Min. 24 hrs.) prior to grouting the shear keys.

**NOTES**

Prestressing steel shall be uncoated high strength, low relaxation 7-wire strand, Grade 270. The nominal diameter shall be 1/2" and the nominal cross-sectional area shall be 0.153 sq. in. Lifting loops shall be 3-1/2" x 270 ksi strands, as shown.

The 1" rods in the transverse tie assembly shall be tightened to a snug fit and the threads set. Pockets that receive transverse tie bar on outside shall be filled with grout after transverse tie assembly is in place.

Non prestressing steel shall conform to AASHTO M-31, M-42 or M-53 Grade 60. The bearing seat surfaces shall be adjusted by shimming to assure firm and even bearing. Two 1/2" fabric adjusting shims of the dimensions of the Exterior Bearing Pad shall be provided for each bearing. (40 Req'd)

Keyway surfaces shall be cleaned to remove form oil or other bond breaking material prior to shipment of the beams. Cleaning shall be done by sandblasting the keyway areas between top of the beam and the bottom edge of the key.

Required Release Strength, f'ci, shall be 4,000 p.s.i.

See Special Provisions for review and distribution of shop drawings.

**BILL OF MATERIAL**

Item	Unit	Quantity
Precast Prestressed Concrete Deck Beams (33" Depth)	Sq. Ft.	1872

Estimated Total Weight (One Beam) = 54,800 Pounds

DESIGNED	F.J.S.
CHECKED	S.F.M.
DRAWN	K.T.R. & S.A.P.
CHECKED	F.J.S.

PD-5-L 9-1-03

**SUPERSTRUCTURE**

SECTION 03-01123-00-BR

ASH GROVE ROAD DISTRICT

SHELBY COUNTY

STATION 15+00

4440 ASH GROVE SPRINGFIELD, IL 62711 (217) 793-8800 oasino@tamvid.com

**OZYURT AND STONE, INC.**  
CONSULTING ENGINEERS

JOB NO.: 0322  
FILE: 0322SUPER.DGN  
DATE: 07/12/05

**NOTES**

Hollow structural steel tubing shall conform to the requirements of ASTM designation A-500 Grade B Structural Steel Tubing and shall meet the longitudinal CVN requirements of 15 Ft.-Lbs. at 0°F.

All other steel shapes and plates shall conform to the requirements of AASHTO M-270, Grade 36 except posts and angles shall conform to AASHTO M-270, Grade 50.

Bolts, cap screws, and nuts shall conform to the requirement of ASTM designation A-307 except for high strength bolts, nuts and washers noted which shall conform to AASHTO M-164.

All bolts, nuts, cap screws, washers and lock washers shall be galvanized in accordance with AASHTO M-232.

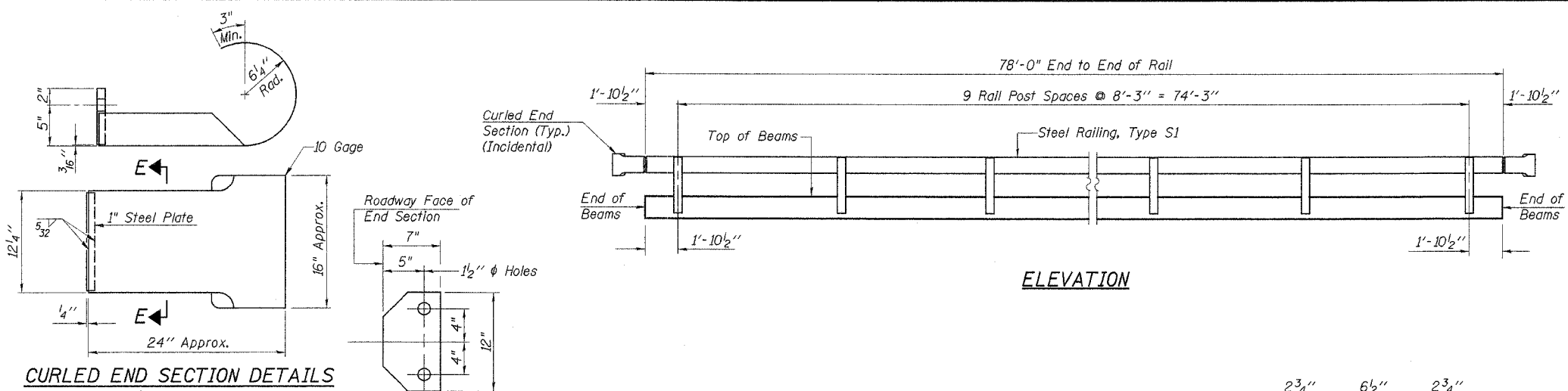
All posts, railing, rail splices, anchor devices, angles and spacers shall be galvanized after shop fabrication in accordance with AASHTO M-111 and ASTM A-385. Galvanized rail shall not be painted.

Railing shall be in accordance with Section 509 of the Standard Specifications, except as noted, and will be paid for at the contract unit price per foot for STEEL RAILING, TYPE S1.

All field drilled holes shall be coated with an approved zinc rich paint before erection.

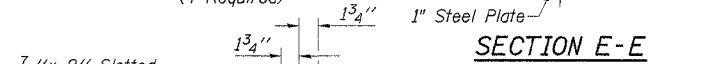
The lower plate of the post spacer in contact with concrete shall receive two coats of asphalt paint conforming to Section 1060.07 Type II or place 1/8" fabric bearing pad between the post spacer and concrete.

The 3/4" high strength bolts used to connect the 6 x 4 x 3/4 angles to the post shall be tightened in accordance with Article 505.04(f)(2) of the Standard Specifications. The 1" high strength bolts connecting the angles to the concrete shall be tightened to a snug fit and given an additional 1/8 turn. The 5/8" cap screws in bottom of posts shall be tightened to a snug fit only.

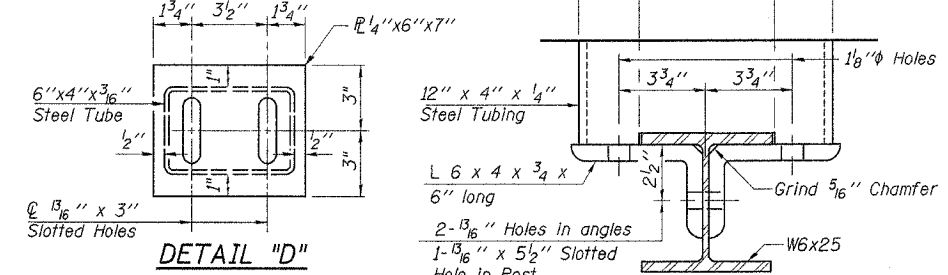


**ELEVATION**

**CURLED END SECTION DETAILS**  
(4 Required)

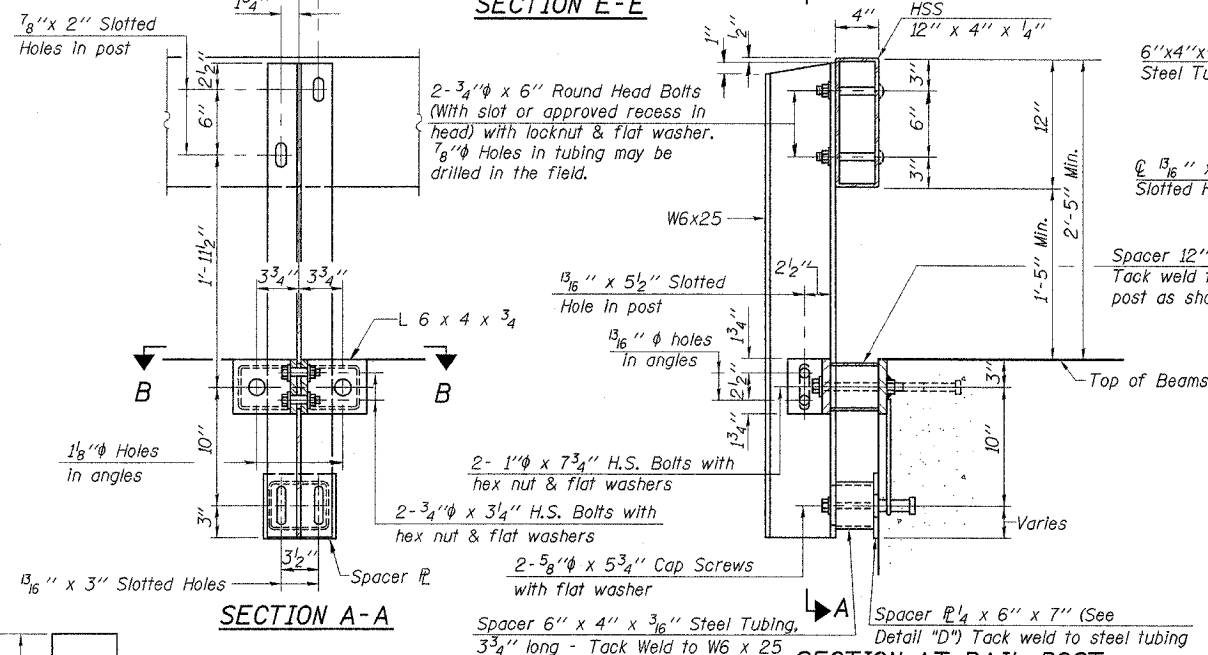
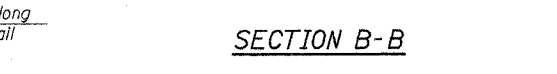


**SECTION E-E**



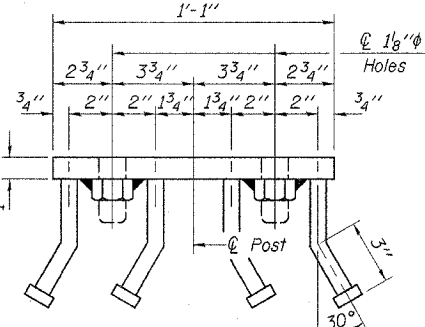
**DETAIL "D"**

**SECTION B-B**



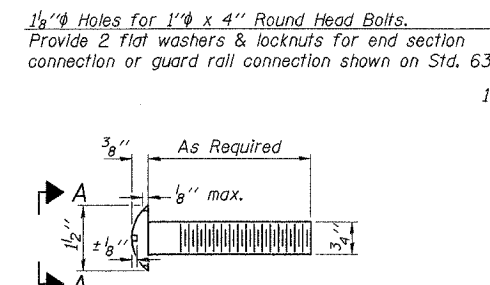
**SECTION A-A**

**SECTION AT RAIL POST**

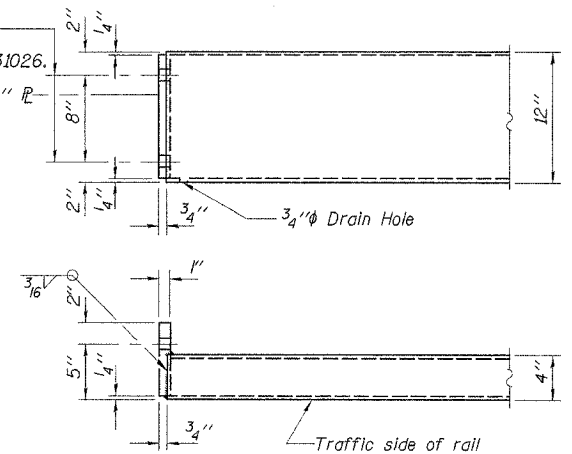


**VIEW C-C**

**DETAIL OF 3/4" Ø ROUND HEAD BOLT**



**VIEW A-A**

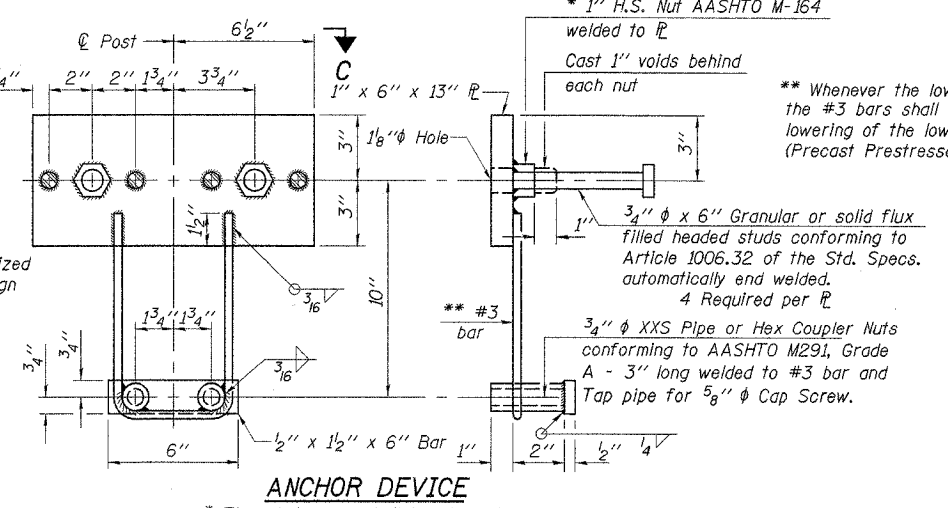


**END OF RAIL DETAILS**

**1/4" SHIM PLATE**

Note: For multi-span bridges, sufficient 1/4" x 6" x 1'-4" galvanized steel shims shall be provided to align rail between adjacent spans. Cost Incidental to Steel Railing.

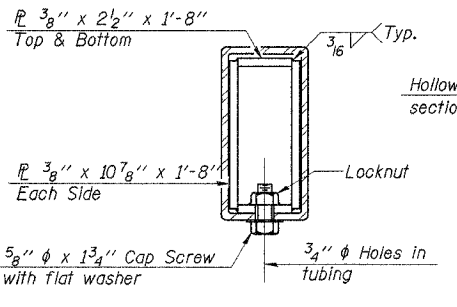
DESIGNED	F.J.S.
CHECKED	S.F.M.
DRAWN	K.T.R. & S.A.P.
CHECKED	F.J.S.



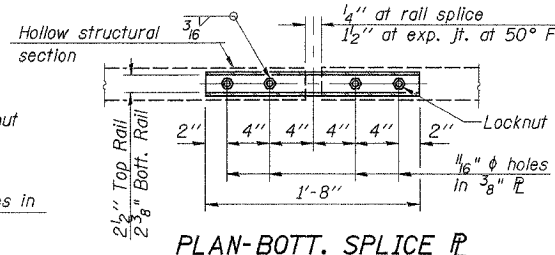
**ANCHOR DEVICE**

\* Threaded areas shall be plugged or blocked off during casting of beam.

\*\* Whenever the lower insert assemblies interfere with strand locations, the #3 bars shall be cut and adjusted in order to allow raising or lowering of the lower inserts. Maximum adjustment not to exceed 1/2". (Precast Prestressed Concrete Deck Beam Bridges Only)



**SECTIONS AT RAIL SPLICE**



**PLAN-BOTT. SPLICE TYPICAL**

**BILL OF MATERIAL**

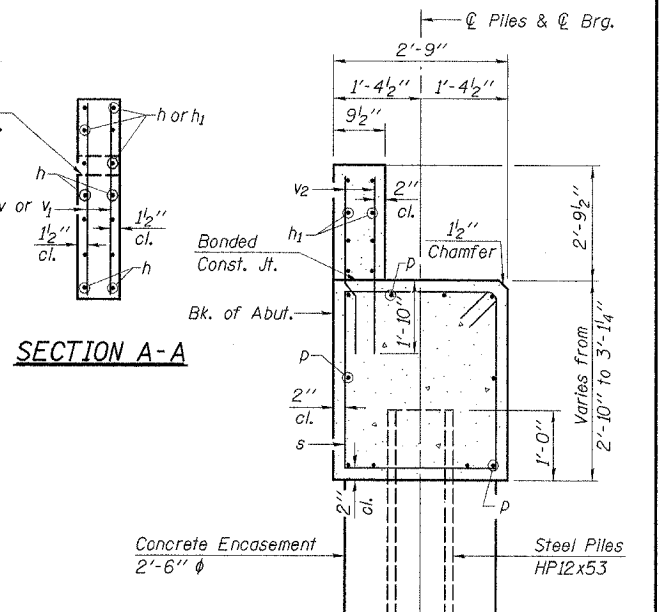
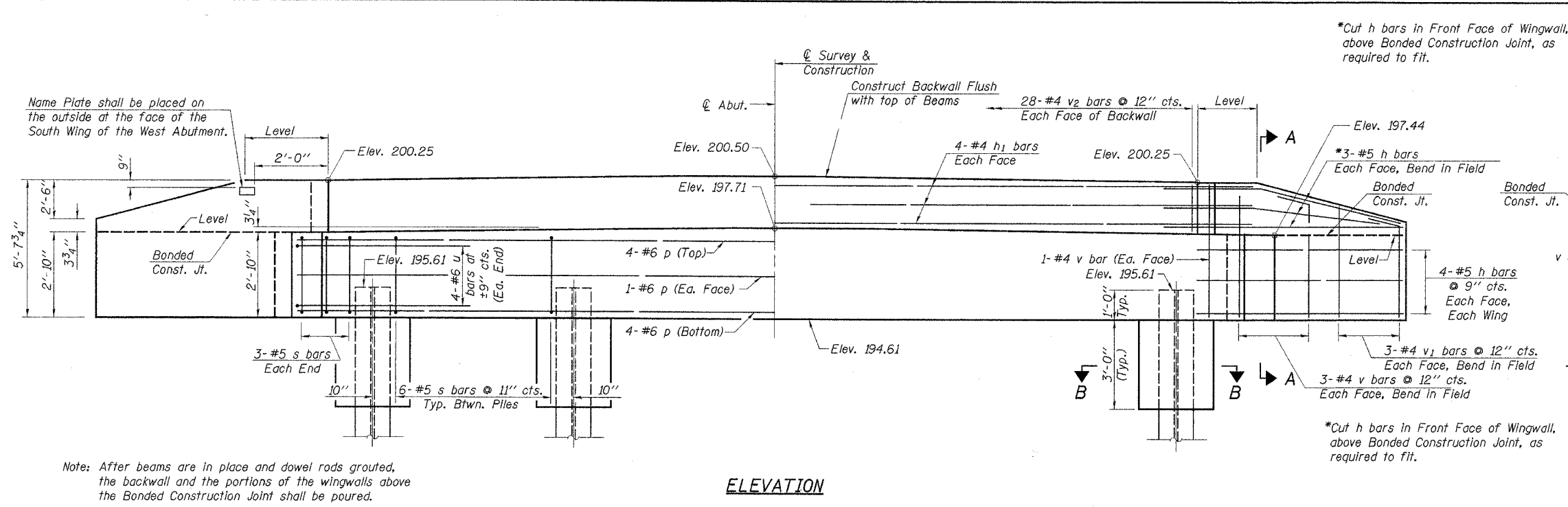
Item	Unit	Quantity
Steel Railing, Type S1	Foot	156

**STEEL RAILING, TYPE S1**  
SECTION 03-01123-00-BR  
ASH GROVE ROAD DISTRICT  
SHELBY COUNTY  
STATION 15+00

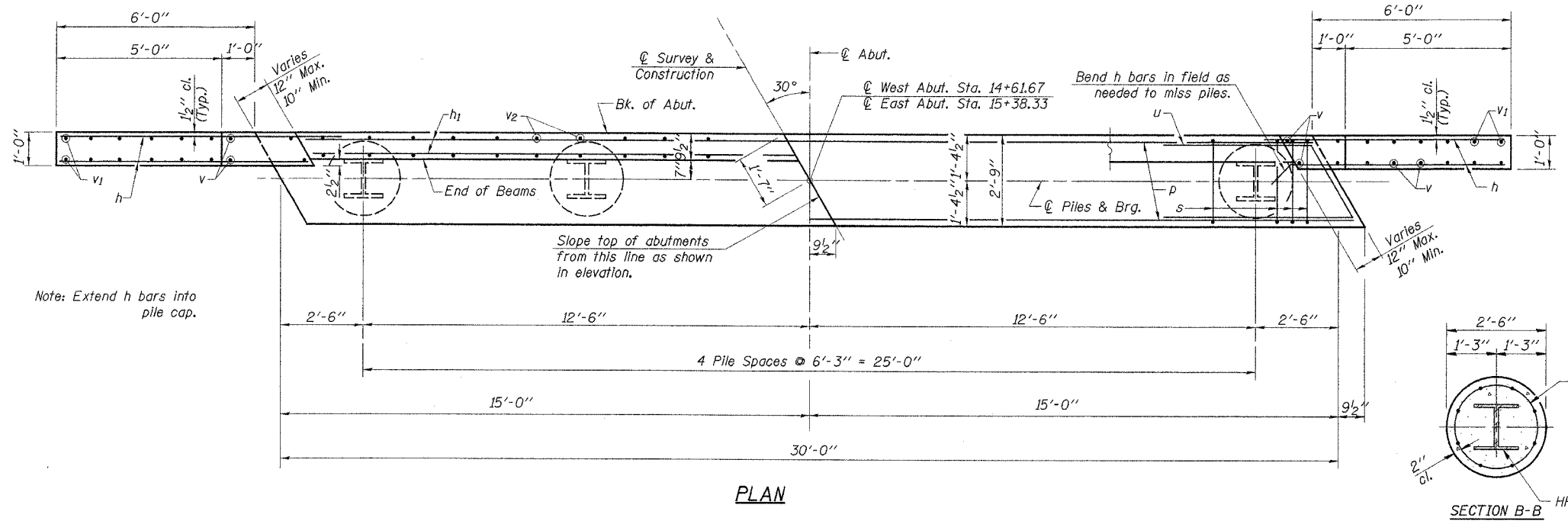
4440 ASH GROVE  
SPRINGFIELD, IL 62711  
(217) 793-8600  
osainfo@famvic.com

**OZYURT AND STONE, INC.**  
CONSULTING ENGINEERS

JOB NO.: 0322  
FILE: 0322RAIL.DGN  
DATE: 07/12/05

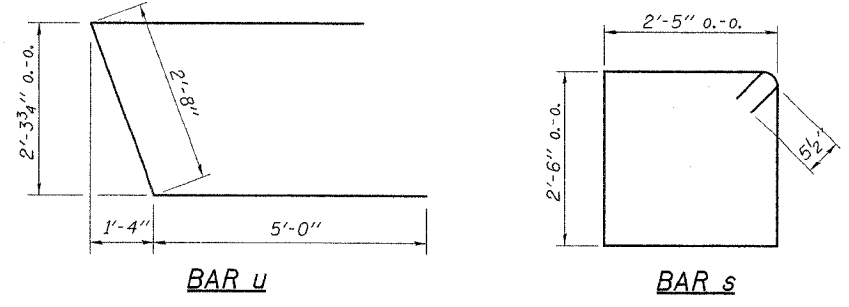


Note: After beams are in place and dowel rods grouted, the backwall and the portions of the wingwalls above the Bonded Construction Joint shall be poured.



**2 ABUTMENTS  
BILL OF MATERIAL**

Bar	No.	Size	Length	Shape
h	56	#5	7'-6"	—
h <sub>1</sub>	16	#4	30'-0"	—
p	20	#6	29'-8"	—
s	60	#5	10'-9"	□
u	16	#6	12'-8"	≡
v	32	#4	5'-4"	—
v <sub>1</sub>	24	#4	4'-0"	—
v <sub>2</sub>	112	#4	4'-6"	—
Concrete Structures	Cu. Yd.	27.2		
Reinforcement Bars	Pound	3140		
Name Plates	Each	1		
Test Pile HP12x53	Each	2		
Steel Piles HP12x53	Foot	280		
Concrete Encasement	Cu. Yd.	5.5		



**PILE DATA**

Type..... Steel Piles HP12x53  
 No. Req'd. (2 Abuts.)..... \*10  
 Design Capacity..... 46 Tons/Pile  
 Driven Capacity..... 69 Tons/Pile  
 Est. Length..... 35 Feet/Pile  
 Drive Test Pile to..... 104 Tons

\*Includes 1 Test Pile to be driven in a permanent location at each Abutment.

DESIGNED	F.J.S.
CHECKED	S.F.M.
DRAWN	K.T.R. & S.A.P.
CHECKED	F.J.S.

**ABUTMENTS**

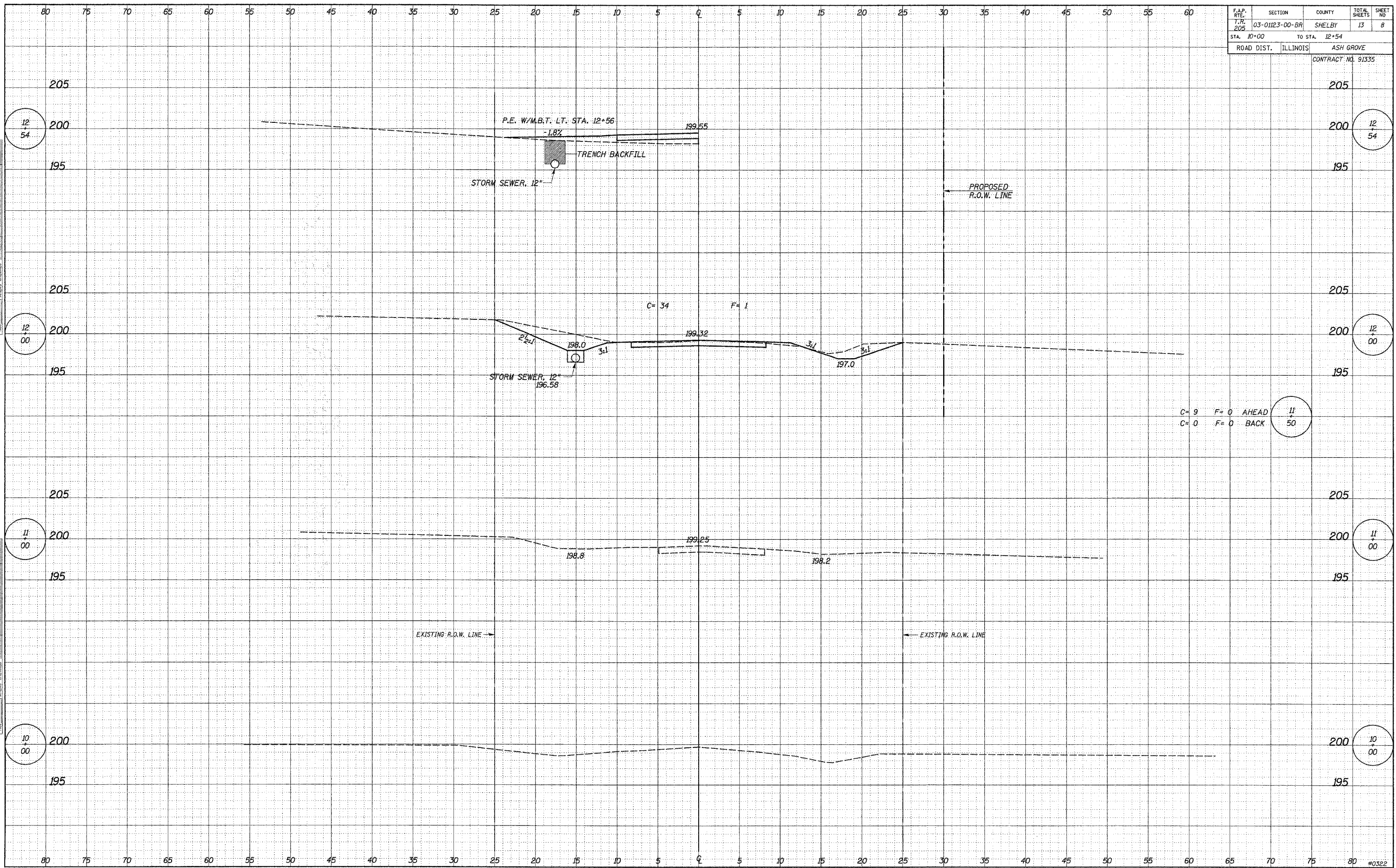
SECTION 03-01123-00-BR  
 ASH GROVE ROAD DISTRICT  
 SHELBY COUNTY  
 STATION 15+00

4440 ASH GROVE SPRINGFIELD, IL 62711 (217) 793-8600 casino@famvid.com	<b>OZYURT AND STONE, INC.</b> CONSULTING ENGINEERS	JOB NO.: 0322 FILE: 0322ABUT.DGN DATE: 07/12/05
--------------------------------------------------------------------------------	-------------------------------------------------------	-------------------------------------------------------

F.A.P. RTE.	SECTION	COUNTY	TOTAL SHEETS	SHEET NO.
T.M. 205	03-01123-00-BR	SHELBY	13	8
STA. 10+00	TO STA. 12+54		ROAD DIST. ILLINOIS ASH GROVE	
CONTRACT NO. 91335				

DATE	BY	APPROVED

DATE	BY	APPROVED



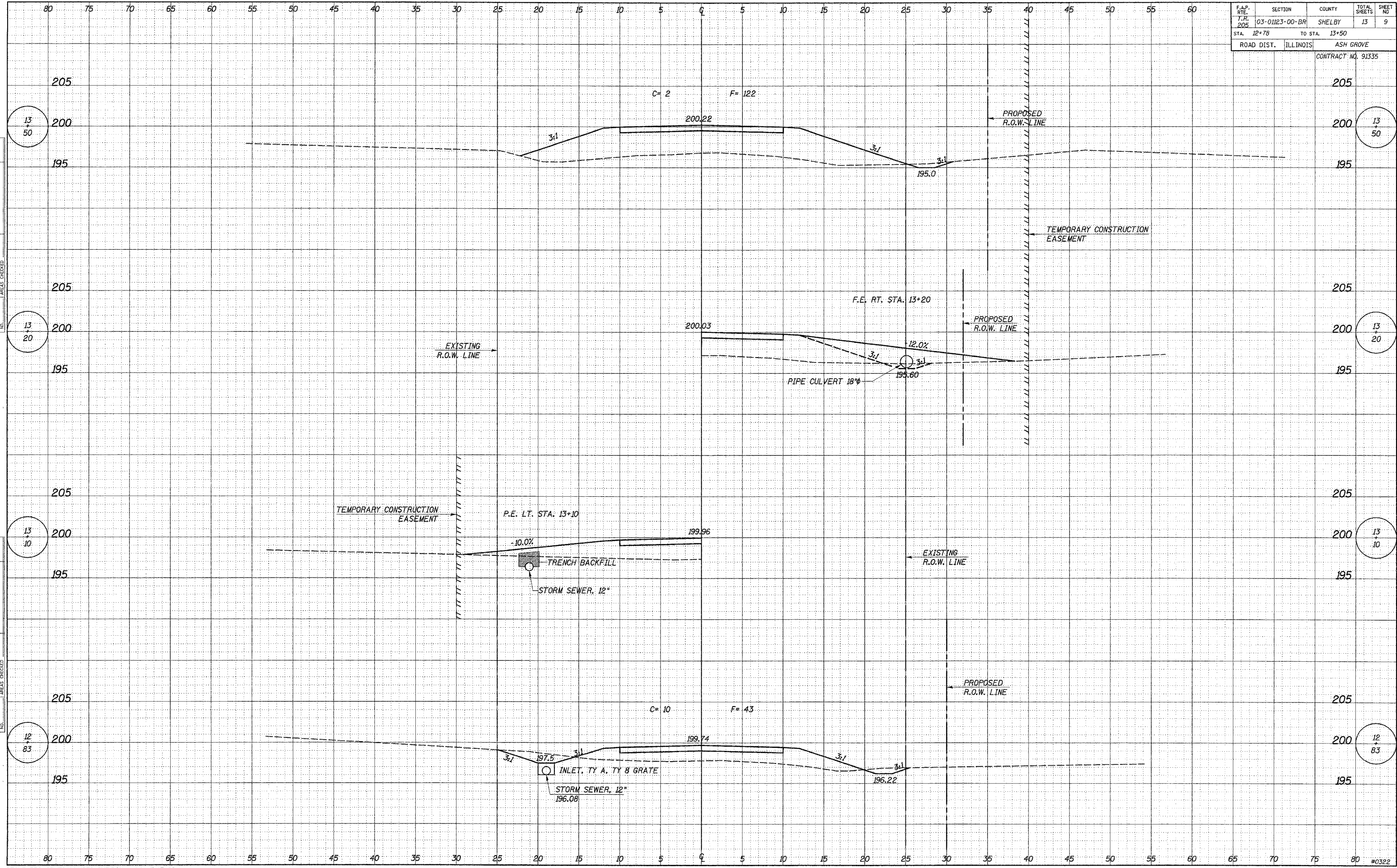
C= 9 F= 0 AHEAD  
 C= 0 F= 0 BACK



F.A.P. RTE.	SECTION	COUNTY	TOTAL SHEETS	SHEET NO.
T.R. 205	03-01123-00-BR	SHELBY	13	9
STA. 12+78		TO STA. 13+50		
ROAD DIST. ILLINOIS		ASH GROVE		
CONTRACT NO. 91335				

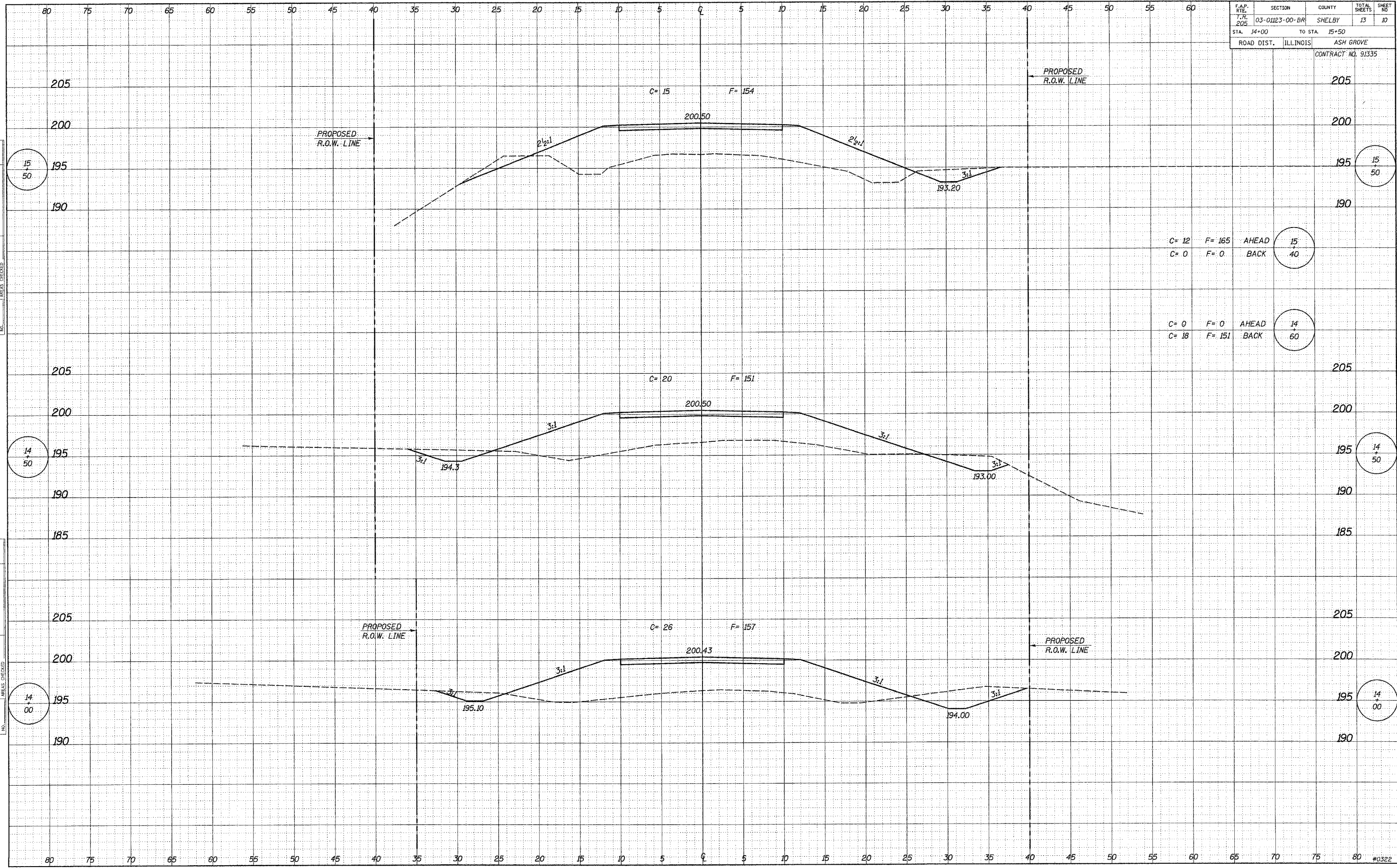
DATE  
BY  
SUPERVISOR  
PLOTTED  
NOTE BOOK  
NO.

DATE  
BY  
SUPERVISOR  
PLOTTED  
NOTE BOOK  
NO.



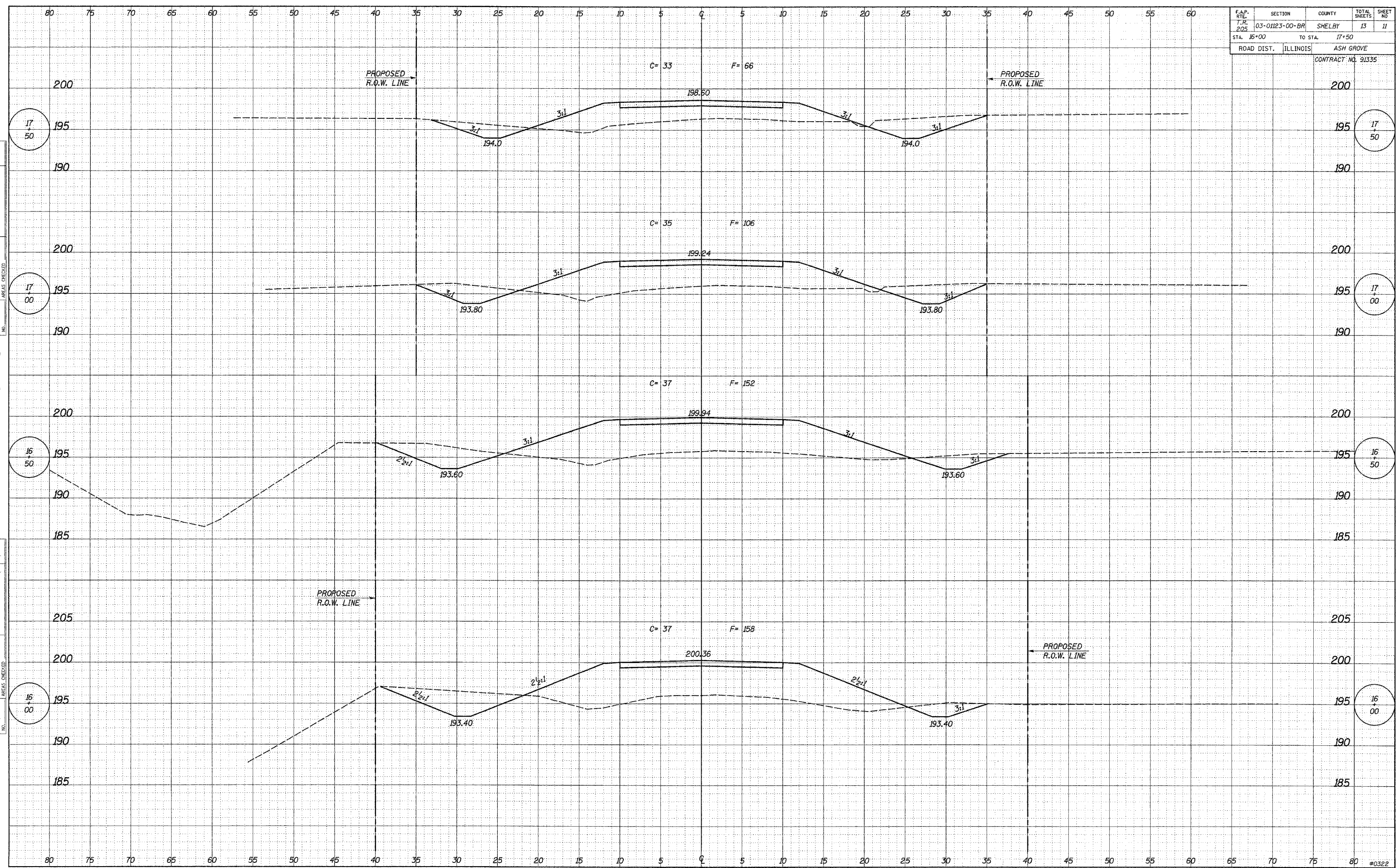
F.A.P. RTE.	SECTION	COUNTY	TOTAL SHEETS	SHEET NO.
T.M. 205	03-01123-00-BR	SHELBY	13	10
STA. 14+00	TO STA. 15+50		ASH GROVE	
ROAD DIST.	ILLINOIS		CONTRACT NO. 91335	

DATE \_\_\_\_\_ BY \_\_\_\_\_  
 SURVEYED \_\_\_\_\_  
 PLOTTED \_\_\_\_\_  
 NOTE BOOK \_\_\_\_\_  
 ORIGINAL SURVEY \_\_\_\_\_  
 NO. \_\_\_\_\_



C=12	F=165	AHEAD	15
C=0	F=0	BACK	40
C=0	F=0	AHEAD	14
C=18	F=151	BACK	60

F.A.P. R.T.E.	SECTION	COUNTY	TOTAL SHEETS	SHEET NO
T.R. 205	03-0123-00-BR	SHELBY	13	11
STA. #5+00	TO STA. 17+50			
ROAD DIST. ILLINOIS	ASH GROVE			
CONTRACT NO. 91335				



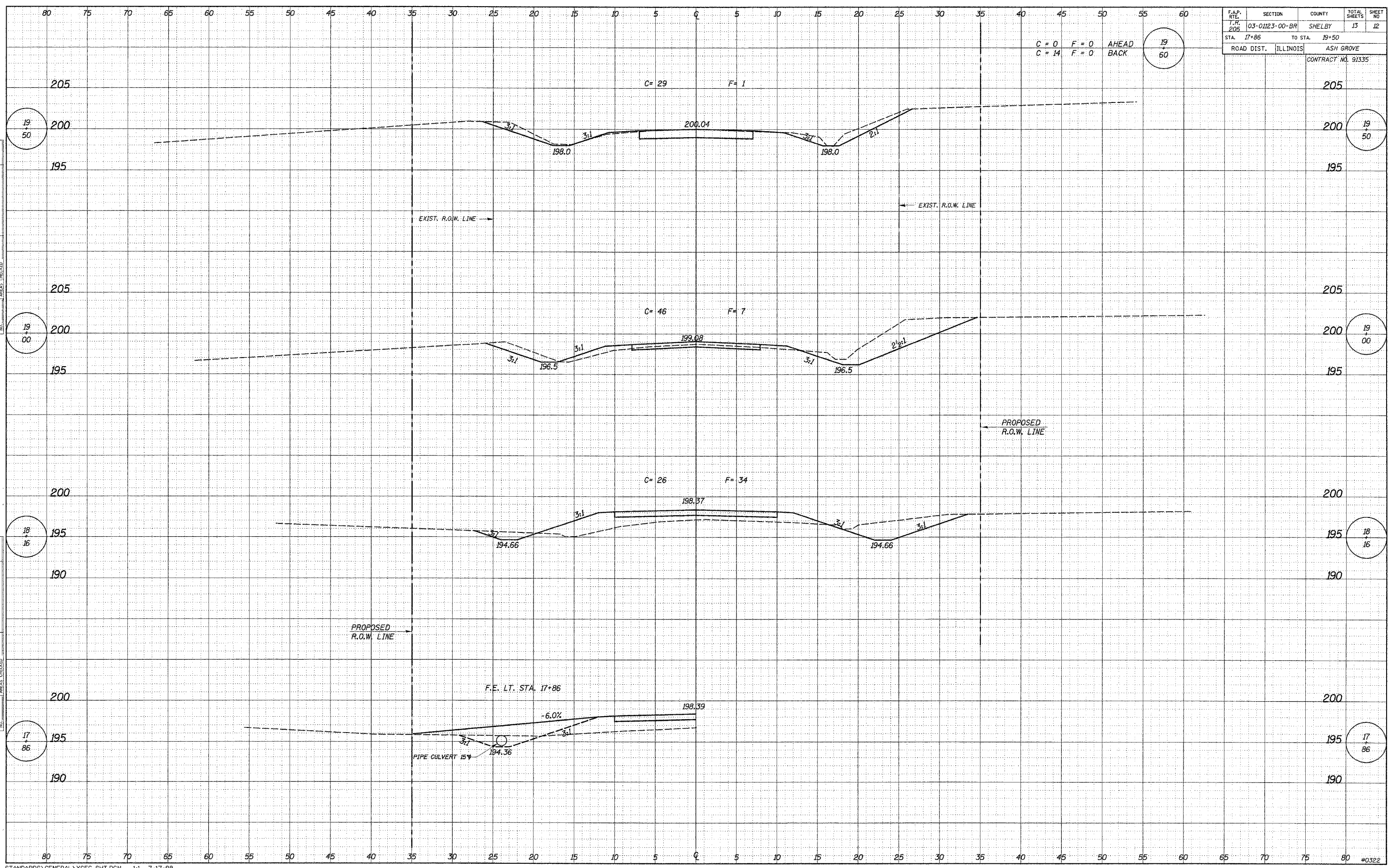
BY \_\_\_\_\_ DATE \_\_\_\_\_  
 FINISHED SURVEY PLOTTED  
 NOTE BOOK TEMPLATE  
 AREAS CHECKED

BY \_\_\_\_\_ DATE \_\_\_\_\_  
 ORIGINAL SURVEY PLOTTED  
 NOTE BOOK TEMPLATE  
 AREAS CHECKED

F.A.P. RATE	SECTION	COUNTY	TOTAL SHEETS	SHEET NO
T.R. 205	03-01123-00-BR	SHELBY	13	12
STA. 17+86	TO STA. 19+50			
ROAD DIST.	ILLINOIS	ASH GROVE		
CONTRACT NO. 91335				

C = 0 F = 0 AHEAD  
C = 14 F = 0 BACK

19  
60



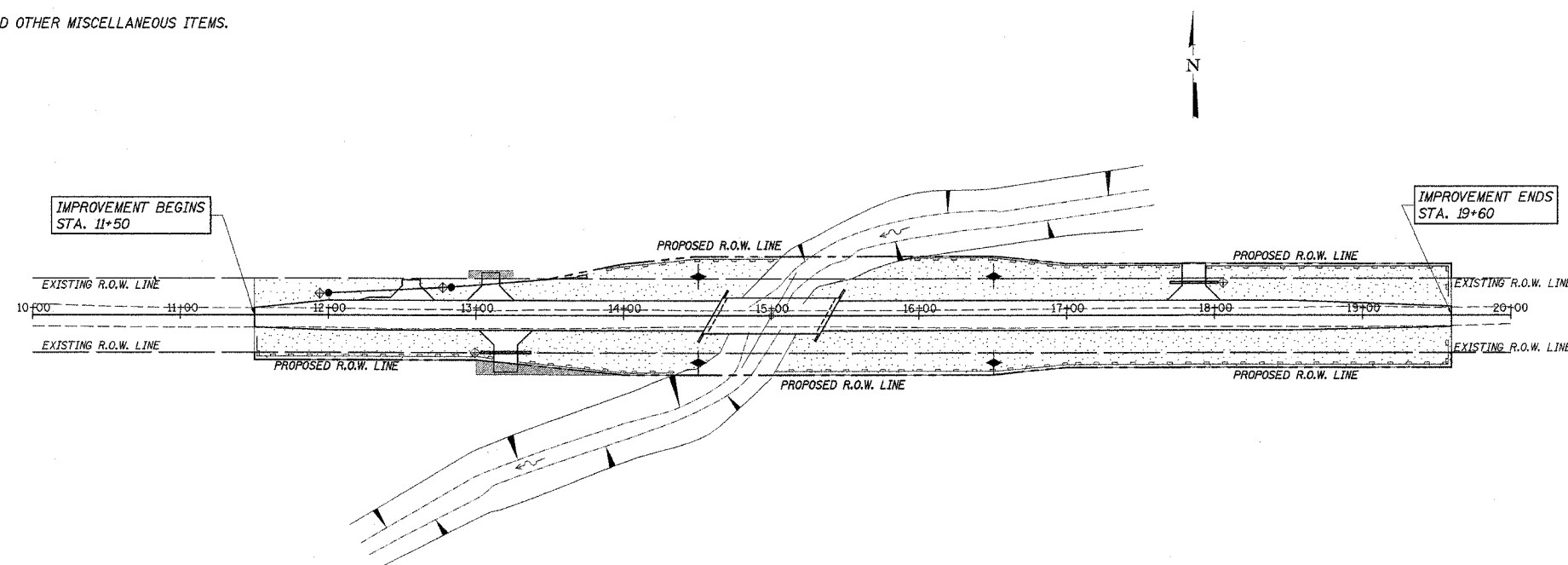
DATE  
BY  
FINL SURVEY  
SHEET PLOTTED  
NOTE BOOK TEMPLATE  
AREAS CHECKED

DATE  
BY  
ORIGINAL SURVEY  
SHEET PLOTTED  
NOTE BOOK TEMPLATE  
AREAS CHECKED

ROUTE NO.	SECTION	COUNTY	TOTAL SHEETS	SHEET NO.
T.R. 205	03-01123-00-BR	SHELBY	13	13
ROAD DIST.	ILLINOIS ASH GROVE		CONTRACT NO. 91335	

DESCRIPTION OF INTENDED SEQUENCE OF MAJOR CONSTRUCTION ACTIVITIES WHICH WILL DISTURB EARTH AND LEAD TO POSSIBLE EROSION FOR MAJOR PORTIONS OF THE CONSTRUCTION SITE:

1. PLACEMENT OF PERIMETER EROSION CONTROL FENCE PRIOR TO THE COMMENCEMENT OF ANY ROAD OR BRIDGE WORK. SEE STD. 280001.
2. REMOVAL OF EXISTING STRUCTURE.
3. CONSTRUCTION OF THE REPLACEMENT STRUCTURE.
4. PLACEMENT OF ROADWAY EMBANKMENT TO RAISE THE ROADWAY TO THE PROPOSED GRADE.
5. DRAINAGE STRUCTURES, INCLUDING DITCHES, WILL BE INSTALLED BEFORE AND/OR DURING THE COMPLETION OF THE EMBANKMENT.
6. PLACEMENT AND MAINTENANCE OF TEMPORARY EROSION CONTROL.
7. PLACEMENT OF PERMANENT EROSION CONTROL.
8. REMOVAL AND PROPER CLEAN UP OF TEMPORARY EROSION CONTROL.
9. FINAL GRADING, PLACING AGGREGATE AND OTHER MISCELLANEOUS ITEMS.



<u>TEMPORARY EROSION CONTROL:</u>	
---	PERIMETER EROSION BARRIER
◆	TEMPORARY DITCH CHECK
◇	INLET & PIPE PROTECTION
<u>PERMANENT EROSION CONTROL:</u>	
■	SEEDING CLASS 2, FERTILIZERS, & MULCH, METHOD 2

TEMPORARY DITCH CHECKS

LT. & RT. STA. 14+25 = 2 EACH  
 LT. & RT. STA. 16+50 = 2 EACH  
 TOTAL = 4 EACH

INLET & PIPE PROTECTION

LT. STA. 11+98 = 1 EACH  
 LT. STA. 12+80 = 1  
 RT. STA. 13+00 = 1  
 LT. STA. 18+05 = 1  
 TOTAL = 4 EACH

BILL OF MATERIAL

ITEM	UNIT	QUANTITY
TEMPORARY EROSION CONTROL SEEDINGS	POUND	300
TEMPORARY DITCH CHECKS	EACH	4
PERIMETER EROSION BARRIER	FOOT	1075
INLET & PIPE PROTECTION	EACH	4

THE ABOVE QUANTITIES ARE ESTIMATES ONLY. ACTUAL QUANTITIES FOR EROSION CONTROL WILL BE DETERMINED BY THE ENGINEER IN THE FIELD AND THERE WILL BE NO ADJUSTMENT IN ANY PRICE DUE TO A CHANGE IN PLAN QUANTITY.

EROSION CONTROL PLAN

SECTION 03-01123-00-BR  
 ASH GROVE ROAD DISTRICT  
 SHELBY COUNTY  
 STATION 15+00

4440 ASH GROVE  
 SPRINGFIELD, IL 62711  
 (217) 793-8600  
 oasino@samvid.com

**OZYURT AND STONE, INC.**  
 CONSULTING ENGINEERS

JOB NO.: 0322  
 FILE: 0322ECP.DGN  
 DATE: 07/12/05