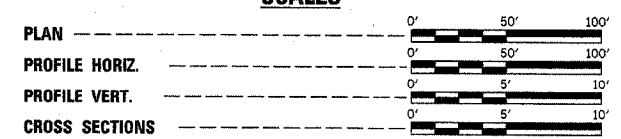


STATE OF ILLINOIS DEPARTMENT OF TRANSPORTATION DIVISION OF HIGHWAYS PLANS FOR PROPOSED BRIDGE REPLACEMENT AND REHABILITATION PROGRAM

**ASH GROVE ROAD DISTRICT
SECTION 03-01123-00-BR
SHELBY COUNTY
PROJECT NO. BROS-173(129)
T.R. ROUTE 205
JOB NO. : C-95-314-05**

SCALES

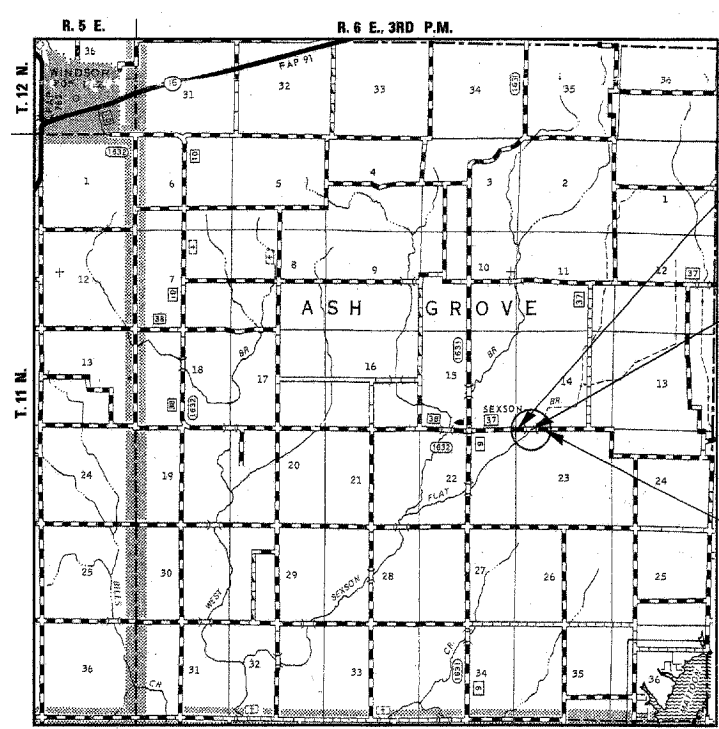


INDEX OF SHEETS

SHEET NO.	TITLE
1.	COVER SHEET
2.	SUMMARY OF QUANTITIES, GENERAL NOTES & TYPICAL SECTIONS
3.	PLAN AND PROFILE SHEET
4.-7.	BRIDGE PLANS
8.-12.	STATION CROSS SECTIONS
13.	EROSION CONTROL PLAN

STANDARDS:

000001-04	STANDARD SYMBOLS, ABBREVIATIONS AND PATTERNS
280001-02	TEMPORARY EROSION CONTROL
515001-02	NAME PLATE FOR BRIDGES
542301	PRECAST REINFORCED CONCRETE FLARED END SECTIONS
602301	INLET - TYPE A
604036-01	GRATE TYPE 8
630001-05	STEEL PLATE BEAM GUARDRAIL
631026-02	TRAFFIC BARRIER TERMINAL TYPE 5 & 5A
BLR 21-6	TYPICAL APPLICATION OF TRAFFIC CONTROL DEVICES FOR CONSTRUCTION ON RURAL LOCAL HIGHWAYS

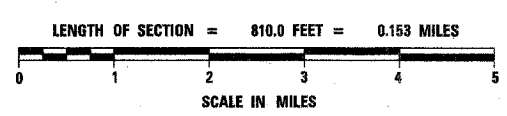


IMPROVEMENT BEGINS
STA. 11 + 50

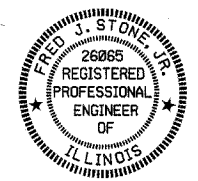
STA. 15 + 00 - SPECIAL BRIDGE DESIGN
PRECAST PRESTRESSED CONC. DECK
BEAM BRIDGE, 1 SPAN AT 78'-0";
24'-0" ROADWAY; SKEW = 30°
EXISTING S.N. 087-3039
PROPOSED S.N. 087-3545

IMPROVEMENT ENDS
STA. 19 + 60

LOCATION PLAN



MINOR COLLECTOR (RURAL) ADT 0-250
CURRENT ADT < 150
40 MPH DESIGN SPEED



Fred J. Stone, Jr. (7-12-05)
ILLINOIS PROFESSIONAL NO. 26065

TOLL FREE JOINT UTILITY LOCATING
INFORMATION FOR EXCAVATORS (J.U.L.I.E.)
TELEPHONE NUMBER 1-800-892-0123

PASSED	<i>14 July 2005</i>	2005
	<i>Wa. Bill Calam</i>	
	ASH GROVE ROAD DISTRICT COMMISSIONER	
APPROVED	<i>107-14</i>	2005
	<i>David A. Sil</i>	
	SHELBY COUNTY ENGINEER	
PASSED	<i>7/21</i>	2005
	<i>David A. Sil</i>	
	DISTRICT FIVE ENGINEER OF LOCAL ROADS & STREETS	
RELEASED FOR BID BASED ON LIMITED REVIEW	<i>July 22</i>	2005
	<i>Joseph E. Lume</i>	
	DEPUTY DIRECTOR OF HIGHWAYS REGION THREE ENGINEER	
	STATE OF ILLINOIS DEPARTMENT OF TRANSPORTATION	