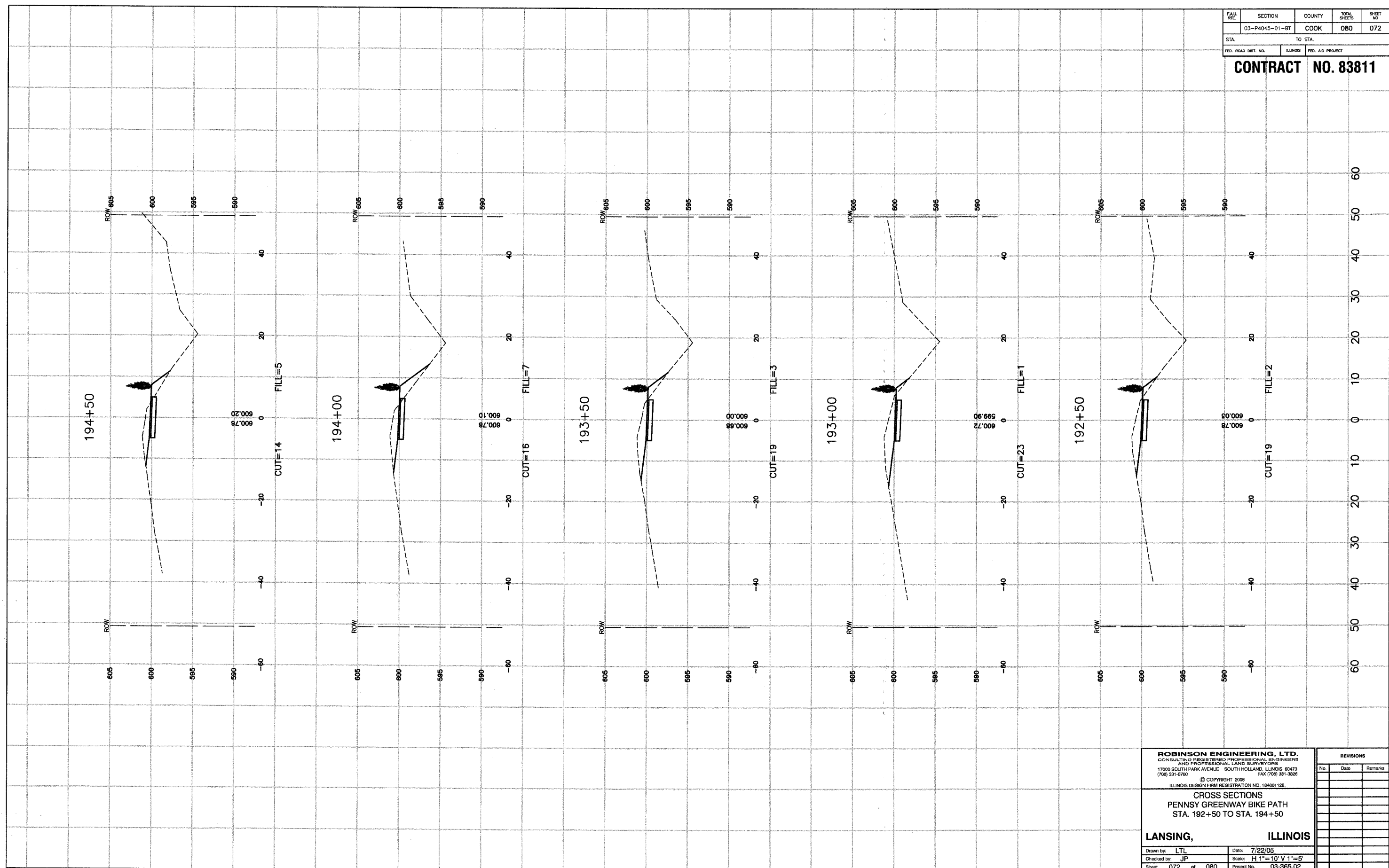


FAH. RTE.	SECTION	COUNTY	TOTAL SHEETS	SHEET NO.
	03-P4045-01-BT	COOK	080	072
STA.		TO STA.		
FED. ROAD DIST. NO.	ILLINOIS	FED. AID PROJECT		

**CONTRACT NO. 83811**



**ROBINSON ENGINEERING, LTD.**  
 CONSULTING REGISTERED PROFESSIONAL ENGINEERS  
 AND PROFESSIONAL LAND SURVEYORS  
 17000 SOUTH PARK AVENUE SOUTH HOLLAND, ILLINOIS 60473  
 (708) 331-6700 FAX (708) 331-3828  
 © COPYRIGHT 2005  
 ILLINOIS DESIGN FIRM REGISTRATION NO. 164001128.

**CROSS SECTIONS**  
**PENNSY GREENWAY BIKE PATH**  
**STA. 192+50 TO STA. 194+50**

**LANSING, ILLINOIS**

Drawn by: LTL Date: 7/22/05  
 Checked by: JP Scale: H 1"=10' V 1"=5'  
 Sheet 072 of 080 Project No. 03-365.02

REVISIONS		
No.	Date	Remarks