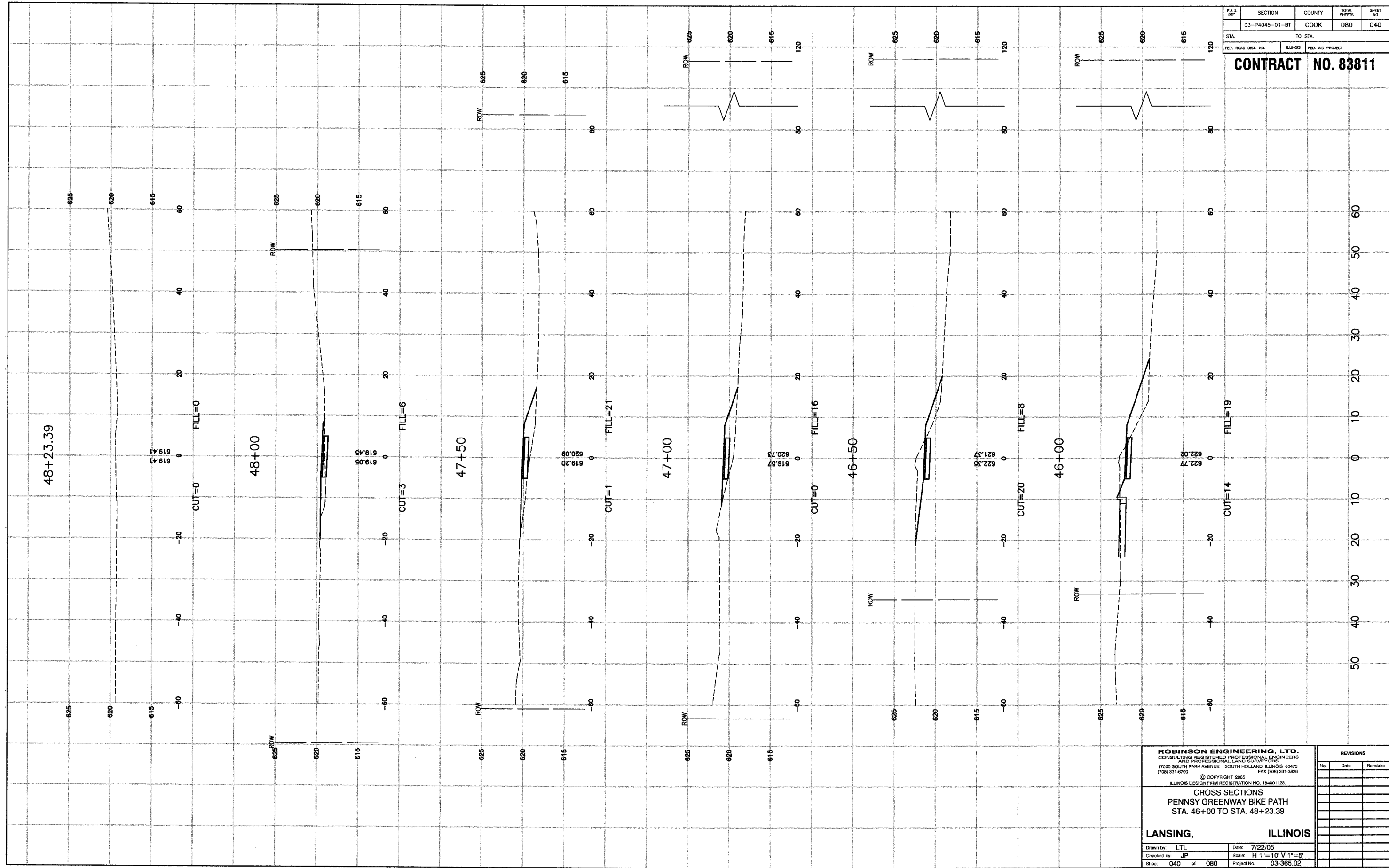


FAU. RITE.	SECTION	COUNTY	TOTAL SHEETS	SHEET NO.
	03-P4045-01-BT	COOK	080	040
STA.	TO STA.			
FED. ROAD DIST. NO.	ILLINOIS	FED. AID PROJECT		

CONTRACT NO. 83811



ROBINSON ENGINEERING, LTD.
CONSULTING REGISTERED PROFESSIONAL ENGINEERS
AND PROFESSIONAL LAND SURVEYORS
17000 SOUTH PARK AVENUE SOUTH HOLLAND, ILLINOIS 60473
(708) 331-6700 FAX (708) 331-3626
© COPYRIGHT 2005
ILLINOIS DESIGN FIRM REGISTRATION NO. 184001128.

CROSS SECTIONS
PENNSY GREENWAY BIKE PATH
STA. 46+00 TO STA. 48+23.39

LANSING, ILLINOIS

Drawn by: LTL Date: 7/22/05
Checked by: JP Scale: H 1"=10' V 1"=5'
Sheet: 040 of 080 Project No.: 03-365.02

REVISIONS		
No.	Date	Remarks