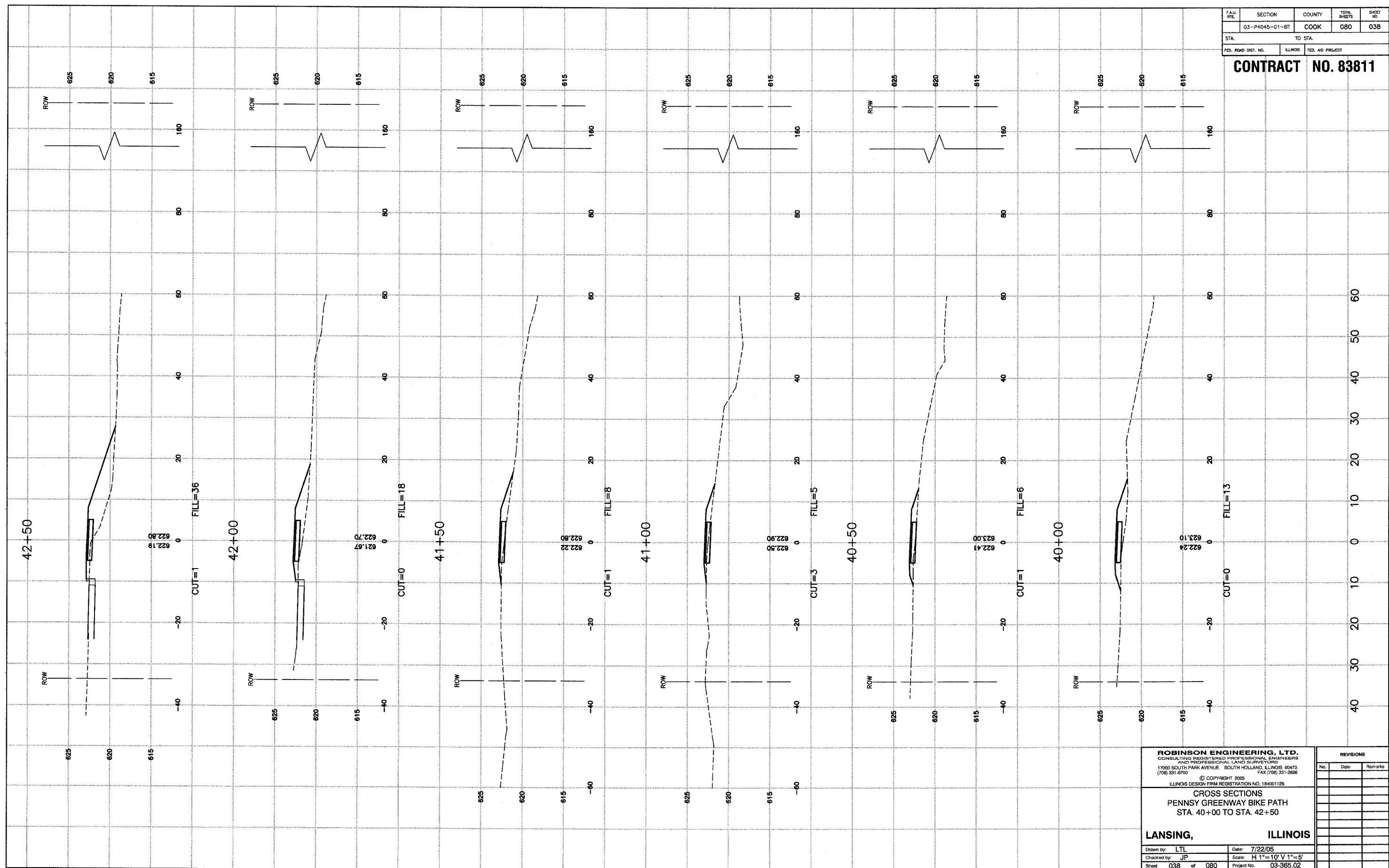


| | | | | |
|---------------------|----------------|----------|------------------|-----------|
| FAM. RTE. | SECTION | COUNTY | TOTAL SHEETS | SHEET NO. |
| | 03-P4045-01-BT | COOK | 080 | 038 |
| STA. | | TO STA. | | |
| FED. ROAD DIST. NO. | | ILLINOIS | FED. AID PROJECT | |

CONTRACT NO. 83811



ROBINSON ENGINEERING, LTD.
CONSULTING REGISTERED PROFESSIONAL ENGINEERS
AND PROFESSIONAL LAND SURVEYORS
17000 SOUTH PARK AVENUE SOUTH HOLLAND, ILLINOIS 60473
(708) 331-8700 FAX (708) 331-3826
© COPYRIGHT 2005
ILLINOIS DESIGN FIRM REGISTRATION NO. 184001128

CROSS SECTIONS
PENNSY GREENWAY BIKE PATH
STA. 40+00 TO STA. 42+50

LANSING, ILLINOIS

Drawn by: LTL Date: 7/22/05
Checked by: JP Scale: H 1"=10' V 1"=5'
Sheet 038 of 080 Project No. 03-365.02

| REVISIONS | | |
|-----------|------|---------|
| No. | Date | Remarks |
| | | |
| | | |
| | | |
| | | |
| | | |
| | | |
| | | |
| | | |
| | | |