

FAU ROUTE NO.	SECTION	COUNTY	TOTAL SHEETS	SHEET NO.
2830	*	COOK	10	10
ILLINOIS PROJECT: M-8003 (525)				
CONTRACT NO.: 83809				
* 02-00086-00-RS				

BAXTER

WOODMAN
 Consulting Engineers
Baxter & Woodman
 Crystal Lake, Illinois 815.459.1260
 Burlington, Wisconsin 262.763.7834
 Mokena, Illinois 708.478.2090
 DeKalb, Illinois 815.787.3111
 Grayslake, Illinois 847.223.5088
 Rockford, Illinois 815.489.1551
 www.baxwood.com

CONSULTANTS

NO.	DATE	DESCRIPTION	PER IDOT COMMENTS
1	7/6/05		

* - REFER TO EQUIPMENT MANUFACTURER'S SHOP DRAWING

PLAN SHEET DESIGNATION

- C - COVER
- G - GENERAL
- H - HAZARDOUS MATERIALS
- C - CIVIL
- L - LANDSCAPE
- S - STRUCTURAL
- A - ARCHITECTURAL
- I - INTERIORS
- Q - EQUIPMENT
- F - FIRE PROTECTION
- P - PLUMBING
- M - MECHANICAL
- E - ELECTRICAL
- T - TELECOMMUNICATIONS
- R - RESOURCE

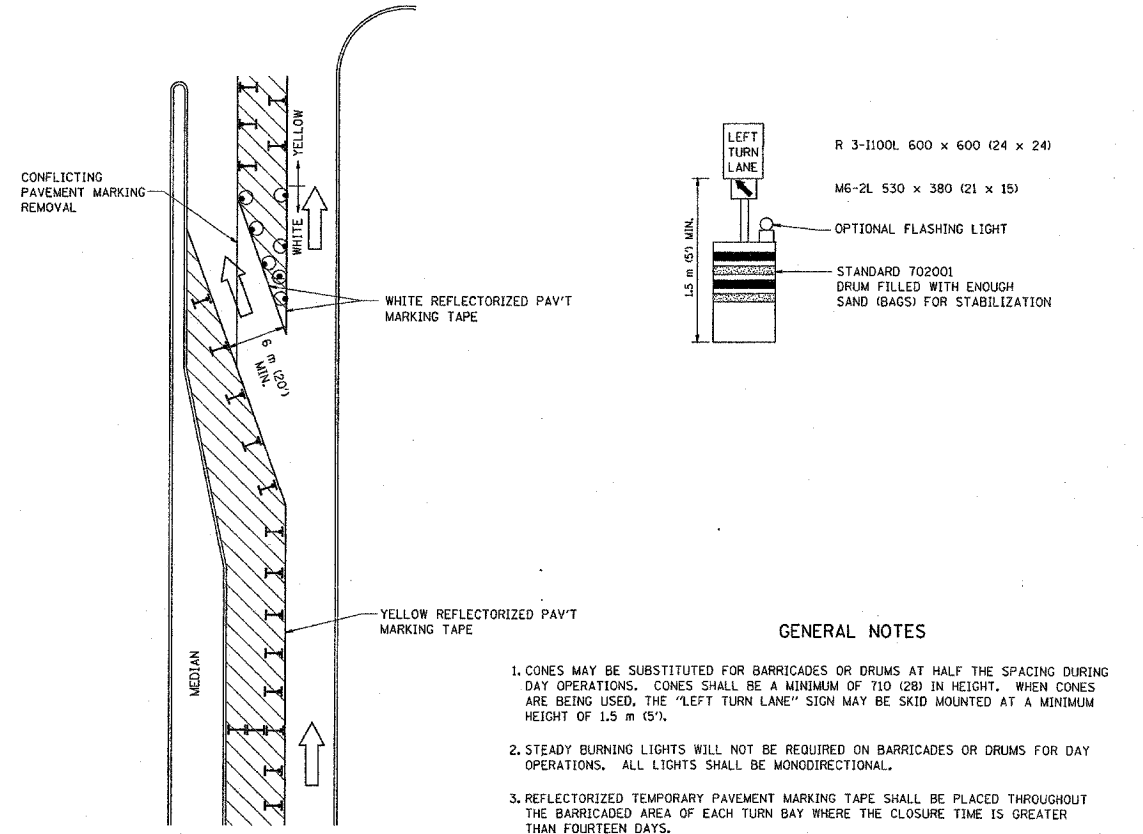
PROJECT NO:	031064
DWG FILE:	
SCALE:	AS NOTED
DRAWING DATE:	3-16-04
DESIGNED BY:	JER
DRAWN BY:	TJB
CHECKED BY:	LDH
PLOTTED BY:	
CLIENT:	

**VILLAGE OF PARK FOREST
 ILLINOIS**
**(FAU 2830) MONEE ROAD
 STP (LAPP) PROJECT**

SHEET TITLE

**IDOT TRAFFIC CONTROL AND
 PROTECTION AT TURN BAYS
 (TO REMAIN OPEN TO TRAFFIC)**

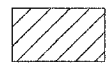
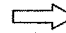
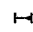

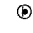
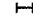
A.A. NO.	SECTION	COUNTY	TOTAL SHEETS	SHEET NO.
STA.	TO STA.			
FED. HIGH DIST. NO.	CLASS.	FED. AID PROJECT		



GENERAL NOTES

- CONES MAY BE SUBSTITUTED FOR BARRICADES OR DRUMS AT HALF THE SPACING DURING DAY OPERATIONS. CONES SHALL BE A MINIMUM OF 710 (28) IN HEIGHT. WHEN CONES ARE BEING USED, THE "LEFT TURN LANE" SIGN MAY BE SKID MOUNTED AT A MINIMUM HEIGHT OF 1.5 m (5').
- STEADY BURNING LIGHTS WILL NOT BE REQUIRED ON BARRICADES OR DRUMS FOR DAY OPERATIONS. ALL LIGHTS SHALL BE MONODIRECTIONAL.
- REFLECTORIZED TEMPORARY PAVEMENT MARKING TAPE SHALL BE PLACED THROUGHOUT THE BARRICADED AREA OF EACH TURN BAY WHERE THE CLOSURE TIME IS GREATER THAN FOURTEEN DAYS.
- THIS APPLICATION ALSO APPLIES WHEN WORK IS BEING PERFORMED IN THE RIGHT LANE(S) AND THE RIGHT TURN BAY IS TO REMAIN OPEN. UNDER THIS CONDITION, "RIGHT TURN LANE" R3-100 600 x 600 (24 x 24) AND M6-2R 530 x 380 (21 x 15) SHALL BE USED.
- THESE CONTROLS SHALL SUPPLEMENT MAINLINE TRAFFIC CONTROL FOR LANE CLOSURES.
- LONGITUDINAL DIMENSIONS MAY BE ADJUSTED TO FIT FIELD CONDITIONS.
- FORM BT 725 IS REQUIRED.
- TRAFFIC CONTROL AND PROTECTION AT TURN BAYS (TO REMAIN OPEN TO TRAFFIC) SHALL BE INCLUDED IN THE COST SPECIFIED TRAFFIC CONTROL STANDARDS OR ITEMS.

LEGEND

-  WORK AREA
-  LANE OPEN TO TRAFFIC
-  TYPE I OR II BARRICADE WITH STEADY BURN LIGHT
-  DRUM WITH STEADY BURN LIGHT
-  DRUM WITH SIGN (WITH OPTIONAL FLASHING LIGHT) SEE DETAIL
-  TYPE I OR II CHECK BARRICADE WITH FLASHING LIGHT

All dimensions are in millimeters (inches) unless otherwise shown.

ILLINOIS DEPARTMENT OF TRANSPORTATION
 TRAFFIC CONTROL AND PROTECTION
 AT TURN BAYS
 (TO REMAIN OPEN TO TRAFFIC)

REVISIONS	NAME	DATE
1	T. RAMMACHER	09/08/94
2	A. HOUSEH	11/07/95
3	A. HOUSEH	10/12/96
4	T. RAMMACHER	01/06/00

SCALE: NONE
 DATE: 11/20/01
 DRAWN BY: LHA
 CHECKED BY:

TC-14

I:\PRKFT\031064\DWG\031064-6-10.dwg
 Plotted: 7-19-05 @ 4:53pm By: 386jer
 Copyright © 2005, By Baxter & Woodman, Inc.
 State of Illinois - Professional Design Firm
 License No. - 764-001121 - Expires 4-30-07

Tue Nov 20 16:08:53 2001
 \\dlead\projects\distatd\lcl4.dgn LV:35
 V:\TC14

light14.prk 15-50-32 11/20/2001