

CONSULTANTS

NO.	DATE	DESCRIPTION	PER	COMMENTS
1	7/6/05			

* - REFER TO EQUIPMENT MANUFACTURER'S SHOP DRAWING

PLAN SHEET DESIGNATION

COVER
G - GENERAL
H - HAZARDOUS MATERIALS
C - CIVIL
L - LANDSCAPE
S - STRUCTURAL
A - ARCHITECTURAL
I - INTERIORS
Q - EQUIPMENT
F - FIRE PROTECTION
P - PLUMBING
M - MECHANICAL
E - ELECTRICAL
T - TELECOMMUNICATIONS
R - RESOURCE

PROJECT NO: 031064

DWG FILE:	AS NOTED
SCALE:	3-16-04
DRAWING DATE:	
DESIGNED BY:	JER
DRAWN BY:	TJB
CHECKED BY:	LDH
PLOTTED BY:	

CLIENT

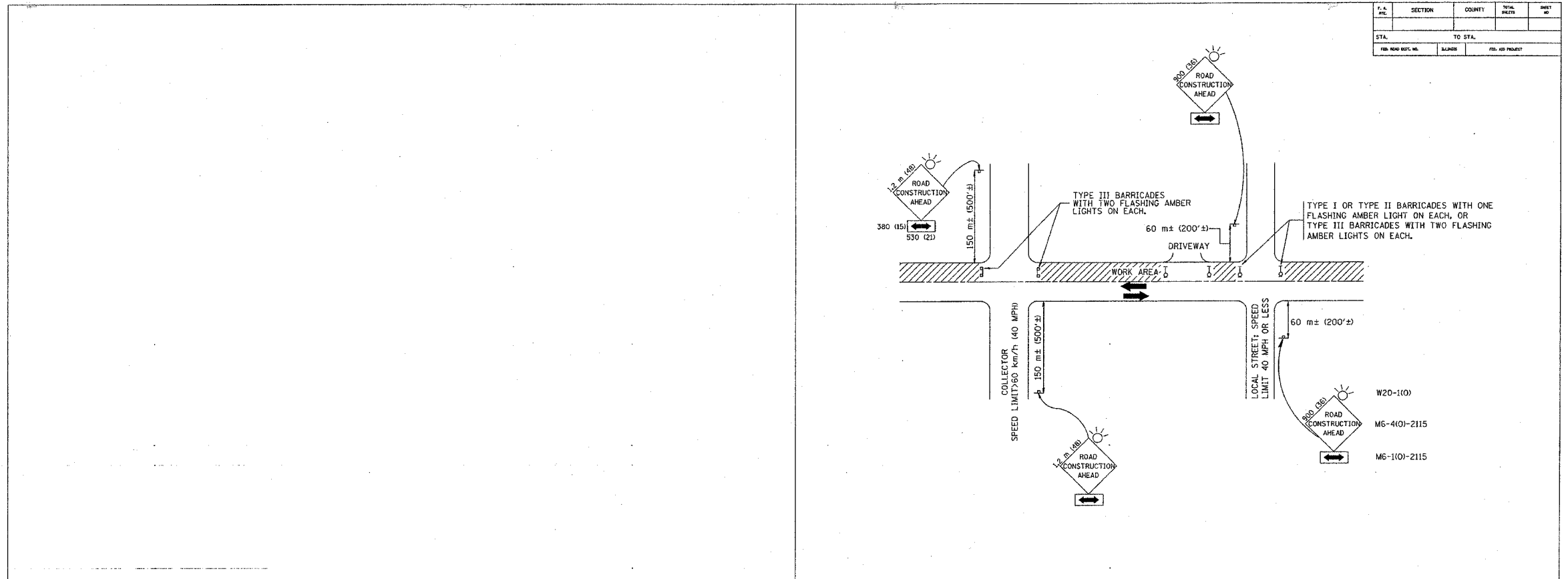
VILLAGE OF PARK FOREST ILLINOIS

(FAU 2830) MONEE ROAD STP (LAPP) PROJECT

SHEET TITLE

IDOT TRAFFIC CONTROL AND PROTECTION FOR SIDE ROADS, INTERSECTIONS, AND DRIVEWAYS

V.A. FILE	SECTION	COUNTY	TOTAL SHEETS	SHEET NO.
STA. TO STA.				
FED. ROAD DIST. NO.	ALTERN.	FIL. AD. PROJECT		



TRAFFIC CONTROL AND PROTECTION FOR SIDE ROADS, INTERSECTIONS, AND DRIVEWAYS

NOTES:

- A. FOR NO LANE RESTRICTION ON THE SIDE ROAD OR DRIVEWAYS:
 - SIDE ROAD WITH A SPEED LIMIT OF 60 km/h (40 MPH) OR LESS AS SHOWN ON THE DRAWING AND AS DIRECTED BY THE ENGINEER:
 - a) ONE ROAD CONSTRUCTION AHEAD SIGN 900x500 (36x20) WITH A FLASHER AND FLAG MOUNTED ON IT APPROXIMATELY 60 m (200') IN ADVANCE OF THE MAIN ROUTE.
 - b) THE CLOSED PORTION OF THE MAIN ROUTE SHALL BE PROTECTED BY BLOCKING WITH TYPE I, TYPE II OR TYPE III BARRICADES, 1/3 OF THE CROSS SECTION OF THE CLOSED PORTION.
 - SIDE ROAD WITH A SPEED LIMIT GREATER THAN 60 km/h (40 MPH) AS SHOWN ON THE DRAWING AND AS DIRECTED BY THE ENGINEER:
 - a) ONE ROAD CONSTRUCTION AHEAD SIGN 1.2 m x 1.2 m (48x48) WITH A FLASHER MOUNTED ON IT APPROXIMATELY 150 m (500') IN ADVANCE OF THE MAIN ROUTE.
 - b) THE CLOSED PORTION OF THE MAIN ROUTE SHALL BE PROTECTED BY BLOCKING WITH TYPE III BARRICADES, 1/2 OF THE CROSS SECTION OF THE CLOSED PORTION.
- 3. WHEN THE SIDE ROAD LIES BETWEEN THE BEGINNING OF THE MAINLINE SIGNING AND THE WORK ZONE, A SINGLE HEADED ARROW (M6-1) SHALL BE USED IN LIEU OF THE DOUBLE HEADED ARROW (M6-4).
- B. FOR A LANE CLOSURE ON A SIDE ROAD OR DRIVEWAY:

USE APPLICABLE PORTIONS OF THE TYPICAL APPLICATION OF TRAFFIC CONTROL DEVICES (STD. 701501, STD. 701606 OR THE APPROPRIATE STANDARD). THE SPACING OF SIGNS AND BARRICADES SHALL BE ADJUSTED FOR FIELD CONDITIONS AS DIRECTED BY THE ENGINEER. THE DIRECTIONAL ARROW SHALL BE COVERED OR REMOVED WHEN NO LONGER CONSISTENT WITH THE SIDE ROAD LANE CLOSURE.
- C. ADVANCE WARNING SIGNS ARE TO BE OMITTED ON DRIVEWAY UNLESS OTHERWISE NOTED.
- D. THE TRAFFIC CONTROL AND PROTECTION FOR SIDE ROADS, INTERSECTIONS, AND DRIVEWAYS SHALL BE INCIDENTAL TO THE COST OF SPECIFIED TRAFFIC CONTROL STANDARDS OR ITEMS.

All dimensions are in millimeters (inches) unless otherwise shown.

ILLINOIS DEPARTMENT OF TRANSPORTATION
TRAFFIC CONTROL AND PROTECTION
FOR SIDE ROADS, INTERSECTIONS, AND DRIVEWAYS

NO.	DATE	DESCRIPTION
1	09/08/94	T. RAMMACHER
2	10/18/95	J. OBERLE
3	03/06/96	A. HOUSEH
4	10/15/96	A. HOUSEH
5	01/06/00	T. RAMMACHER

SCALE: NONE DRAWN BY: DATE: 3/25/02 CHECKED BY:

TC-10

Mon Mar 25 10:06:59 2002
\\fszaddi\projects\statetd\vc18.dgn LV:35
V1-TC10

w:\ork\eno11sh\vc10_ork: 10:02:21 03/25/2002