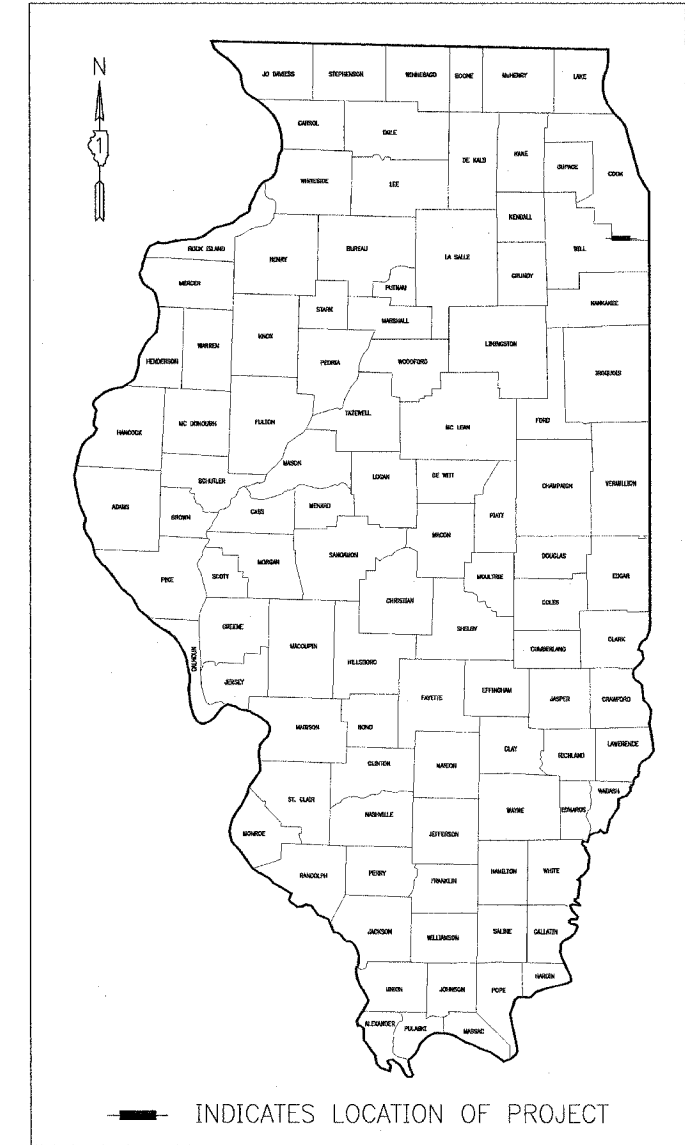


STATE OF ILLINOIS
DEPARTMENT OF TRANSPORTATION

**PLANS FOR PROPOSED
LOCAL AGENCY PAVEMENT PRESERVATION PROJECT
(FAU 2830) MONEE ROAD RESURFACING
WILL COUNTY LIMITS TO WESTERN AVENUE
MFT SECTION: 02-00086-00-RS
PROJECT NO.: M-8003(525)
JOB NO.: C-91-286-05
VILLAGE OF PARK FOREST
COOK COUNTY**

FAU ROUTE NO.	SECTION	COUNTY	TOTAL SHEETS	SHEET NO.
2830	*	COOK	10	1

ILLINOIS PROJECT: M-8003 (525)
CONTRACT NO.: 83809
* 02-00086-00-RS



INDEX OF SHEETS

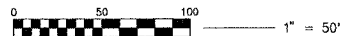
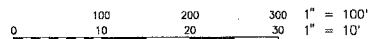
SHEET NO.	TITLE
1	COVER SHEET
2	SUMMARY OF QUANTITIES, TYPICAL SECTIONS, LEGEND & GENERAL NOTES
3	SCHEDULE OF QUANTITIES
4	MONEE ROAD PLAN SHEET: STA. 11+42.89 TO 20+50
5	MONEE ROAD PLAN SHEET: STA. 20+50 TO 30+46.07
6	IDOT DISTRICT ONE TYPICAL PAVEMENT MARKINGS
7	IDOT PAVEMENT MARKING LETTERS & SYMBOLS FOR TRAFFIC STAGING
8	IDOT BUTT JOINT & BITUMINOUS TAPER DETAILS
9	IDOT TRAFFIC CONTROL & PROTECTION FOR SIDE ROADS, INTERSECTIONS AND DRIVEWAYS
10	IDOT TRAFFIC CONTROL & PROTECTION AT TURN BAYS (TO REMAIN OPEN TO TRAFFIC)

STANDARD NO.

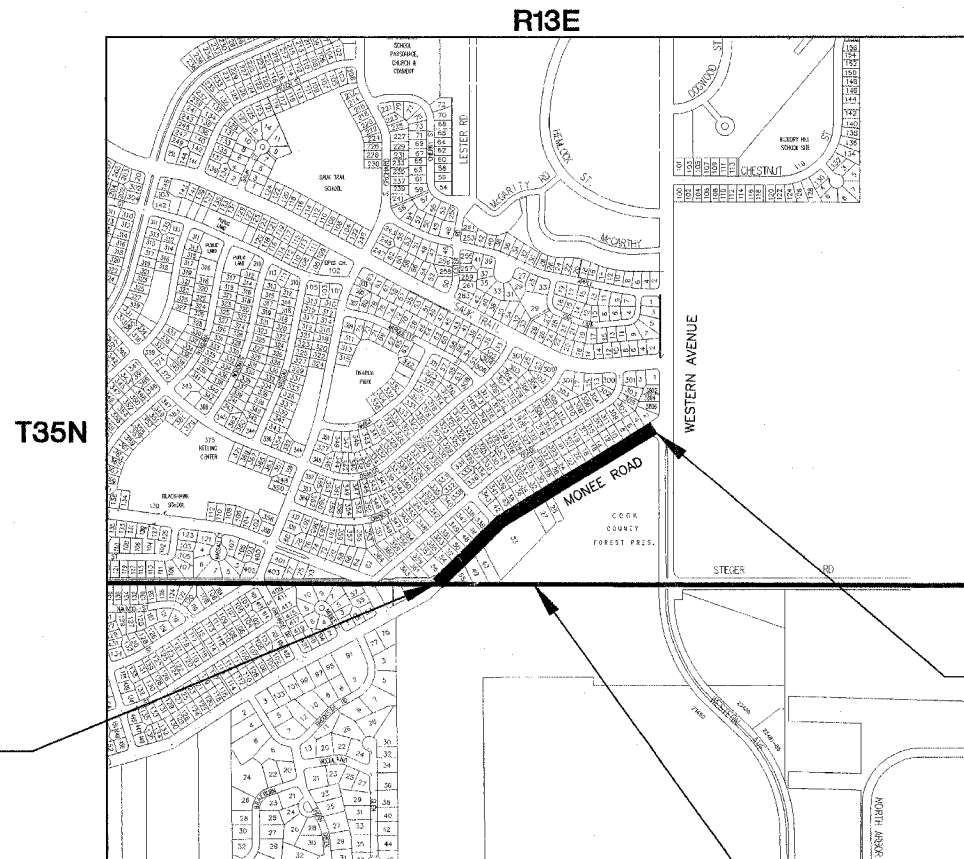
000001-04	STANDARD SYMBOLS, ABBREVIATIONS AND PATTERNS
442201-01	CLASS C AND D PATCHES
701501-03	URBAN LANE CLOSURE, 2L, 2W UNDIVIDED
702001-05	TRAFFIC CONTROL DEVICES
780001-01	TYPICAL PAVEMENT MARKINGS

TRAFFIC DATA

ADT: 2400 (2002)
SPEED LIMIT = 35 MPH



FULL SIZE PLANS HAVE BEEN PREPARED USING STANDARD ENGINEERING SCALES. REDUCED SIZED PLANS WILL NOT CONFORM TO STANDARD SCALES. IN MAKING MEASUREMENTS ON REDUCED SIZE PLANS, THE ABOVE SCALES SHALL BE USED.



LOCATION MAP

GROSS & NET LENGTH OF PROJECT = 1,903.18 LIN. FT. OR 0.360 MILES

CALL JULIE 1-800-892-0123
WITH THE FOLLOWING:
COUNTY = COOK
CITY-TOWNSHIP = PARK FOREST - RICH TOWNSHIP
SEC. & 1/4 SEC. NO. = SE 1/4 - SEC. 36
48 HOURS BEFORE YOU DIG
EXCLUDING SAT., SUN. & HOLIDAYS

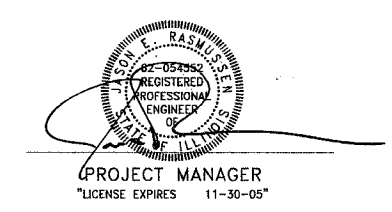


Baxter & Woodman

Burlington, Wisconsin 262.763.7834
Crystal Lake, Illinois 815.459.1260
DeKalb, Illinois 815.787.3111
Mokena, Illinois 708.478.2090
(OFFICE WHICH PREPARED PLANS)

CONTRACT NO. 83809

COUNTY COOK SECTION: NUMBER 02-00086-00-RS



STATE OF ILLINOIS
DEPARTMENT OF TRANSPORTATION
DIVISION OF HIGHWAYS

APPROVED July 19, 2005
James Rashley
LOCAL AGENCY REPRESENTATIVE

APPROVED 7/21 2005
James Rashley
LOCAL AGENCY REPRESENTATIVE

APPROVED 7/21 2005
Dina O'Neil
DEPUTY DIRECTOR OF HIGHWAYS, REGION ENGINEER

PRINTED BY THE AUTHORITY OF
THE STATE OF ILLINOIS

FEDERAL AID PROGRAM ENGINEER: CHARLES RIDDLE, P.E. 847-705-4406
 SCHAMBURG, IL.
 1:\PROJECTS\03106\DWG\0310640r.dwg
 Plotted: 7-18-05 @ 4:44pm By: 368jlr
 Copyright © 2005, By: Baxter & Woodman, Inc.
 State of Illinois - Professional Design Firm
 License No. - 184-001121 - Expires 4-30-07

Copyright © 2004, by BAXTER & WOODMAN, INC.
ALL RIGHTS RESERVED. NO PART OF THESE DRAWINGS
MAY BE REPRODUCED OR OTHERWISE COPIED WITHOUT
WRITTEN PERMISSION OF BAXTER & WOODMAN, INC.