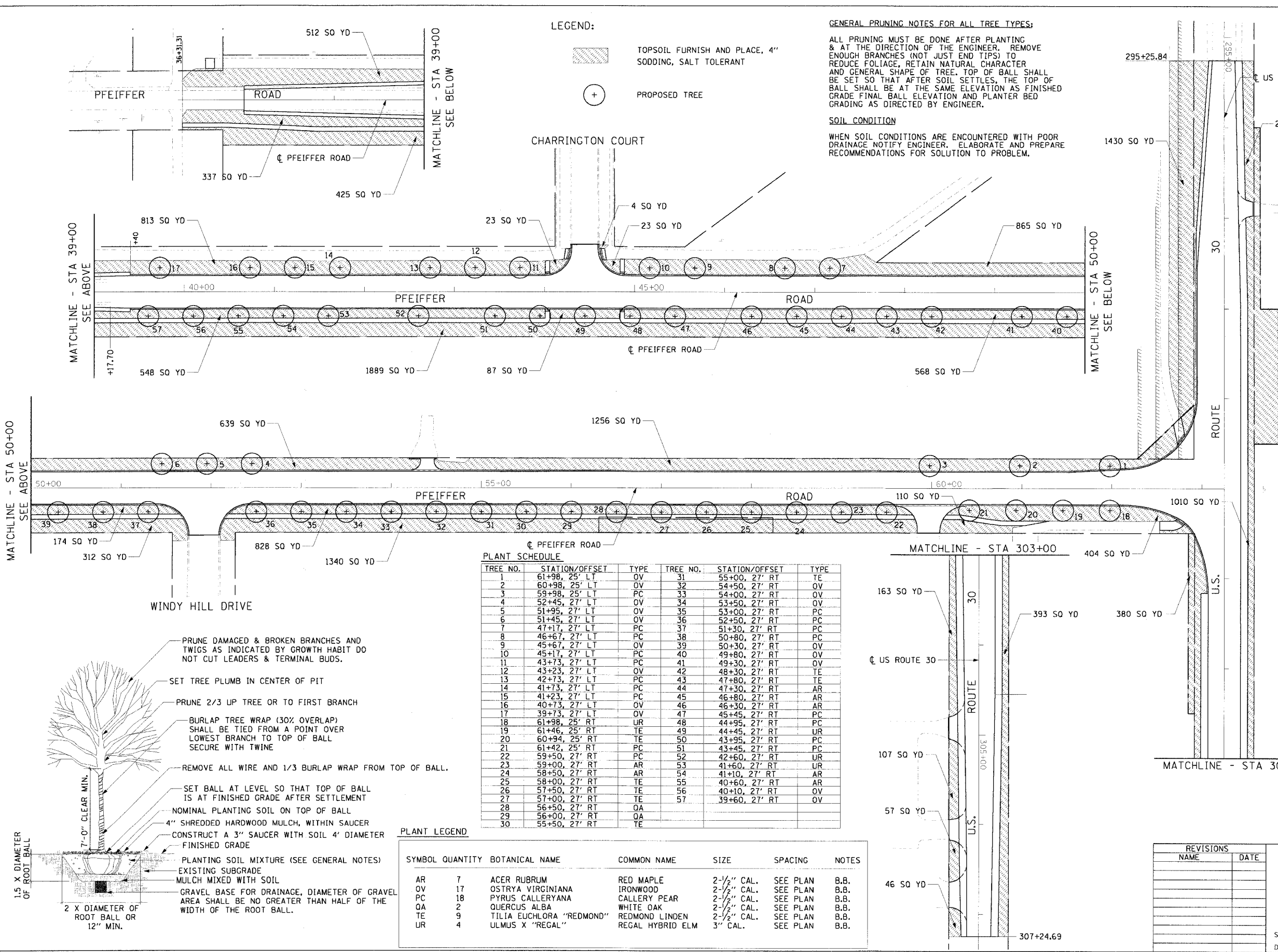


F.A.U. RTE.	SECTION	COUNTY	TOTAL SHEETS	SHEET NO.
3751		WILL	61	18
STA.		TO STA.		
FED. ROAD DIST. NO.		ILLINOIS	FED. AID PROJECT	
99-00030-00-PV				83803



LEGEND:

- TOPSOIL FURNISH AND PLACE, 4" SODDING, SALT TOLERANT
- PROPOSED TREE

GENERAL PRUNING NOTES FOR ALL TREE TYPES:

ALL PRUNING MUST BE DONE AFTER PLANTING & AT THE DIRECTION OF THE ENGINEER. REMOVE ENOUGH BRANCHES (NOT JUST END TIPS) TO REDUCE FOLIAGE, RETAIN NATURAL CHARACTER AND GENERAL SHAPE OF TREE. TOP OF BALL SHALL BE SET SO THAT AFTER SOIL SETTLES, THE TOP OF BALL SHALL BE AT THE SAME ELEVATION AS FINISHED GRADE FINAL ELEVATION AND PLANTER BED GRADING AS DIRECTED BY ENGINEER.

SOIL CONDITION

WHEN SOIL CONDITIONS ARE ENCOUNTERED WITH POOR DRAINAGE NOTIFY ENGINEER. ELABORATE AND PREPARE RECOMMENDATIONS FOR SOLUTION TO PROBLEM.

GENERAL LANDSCAPING NOTES

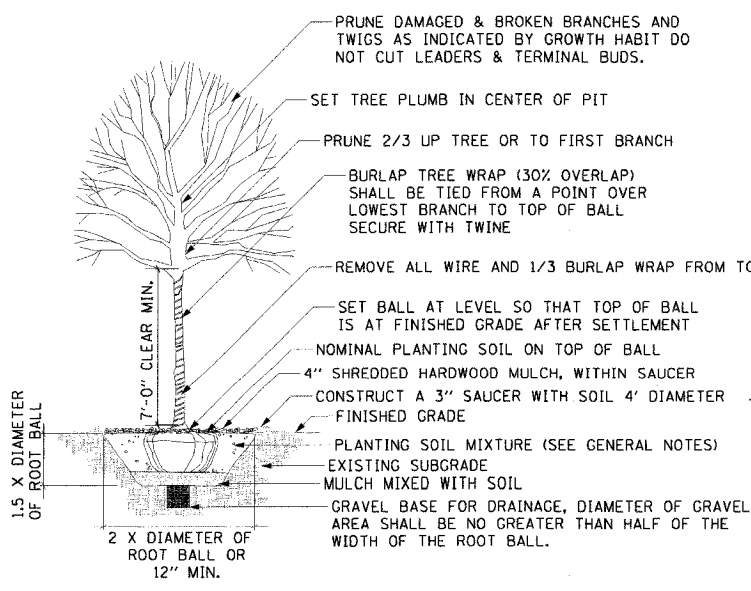
1. GENERAL NOTES SHALL APPLY TO ALL NEW LANDSCAPE WORK IN THIS CONTRACT.
2. PRIOR TO COMMENCEMENT OF ANY CONSTRUCTION ACTIVITIES, CONTRACTOR SHALL NOTIFY THE LOCAL UTILITY ALERT NETWORK FOR EACH MUNICIPALITY IN WHICH SITE WORK OCCURS, TO DETERMINE THE LOCATION OF ANY UNDERGROUND UTILITIES, WHICH MAY AFFECT PROPOSED SITE WORK. CONTRACTOR SHALL NOTIFY THE ENGINEER IMMEDIATELY OF ANY DISCREPANCIES, OBSTACLES AND/OR PROBLEMS.
3. CONTRACTOR SHALL REPAIR IN KIND ANY AREAS DAMAGED AS A RESULT OF LANDSCAPE OPERATIONS.
4. ALL TREES TO RECEIVE A MINIMUM 4" OF SHREDDED HARDWOOD MULCH.
5. PLANT MATERIAL SIZES SHOWN ON PLANT SCHEDULE ARE MINIMUM ACCEPTABLE SIZES.
6. CONTRACTOR SHALL WARRANT ALL TREES UNDER THIS CONTRACT WILL BE HEALTHY AND IN FLOURISHING CONDITION OF ACTIVE GROWTH ONE YEAR FROM DATE OF FINAL ACCEPTANCE.
7. SOIL TO BE USED FOR THE PLANTING MEDIUM FOR THE PROJECT SHALL BE FERTILE, WELL DRAINED, OF UNIFORM QUALITY, FREE OF STONES OVER 1" IN DIAMETER, STICKS, OILS, CHEMICALS, PLASTER, CONCRETE AND OTHER DETERIOUS MATERIAL.
8. THE CONTRACTOR SHALL PREPARE PLANTING BEDS BY ADDING SOIL AMENDMENTS TO TOPSOIL MIX IN THE FOLLOWING QUANTITIES: TOPSOIL MIX FOR TREES AND SHRUBS SHALL BE THREE (3) PARTS TOPSOIL, ONE (1) PART PEAT, AND ONE (1) PART SAND.
9. ALL PLANTS TO BE BALLED IN BURLAP OR CONTAINER GROWN AS SPECIFIED IN PLANT SCHEDULE. ALL PLASTIC ROOT WRAPPING MATERIAL AND METAL WIRE BASKETS SHALL BE REMOVED.
10. CONTRACTOR SHALL WATER ALL PLANTS IMMEDIATELY AFTER PLANTING. FLOOD PLANTS TWICE DURING FIRST TWENTY-FOUR HOURS AFTER PLANTING.
11. ALL NEW TRANSPLANTED SHRUBS TO BE SPRAYED WITH AN ANTIDESSICANT WITHIN TWENTY-FOUR HOURS AFTER PLANTING. ANTI-TRANSPIRANT SHALL BE EQUAL TO "WILTPROF".
12. ALL ROAD AND WALK SURFACES SHALL BE KEPT CLEAR OF MUD AND DEBRIS AT ALL TIMES.
13. ALL AREAS THAT HAVE BEEN DISRUPTED DURING THE CONSTRUCTION PROCESS, AND HAVE NOT BEEN DESIGNATED WITH NEW LANDSCAPE PLANTINGS, SHALL BE RESTORED WITH NEW SALT TOLERANT SOD.

PLANT SCHEDULE

TREE NO.	STATION/OFFSET	TYPE	TREE NO.	STATION/OFFSET	TYPE
1	61+98, 25' LT	OV	31	55+00, 27' RT	TE
2	60+98, 25' LT	OV	32	54+50, 27' RT	OV
3	59+98, 25' LT	PC	33	54+00, 27' RT	OV
4	52+45, 27' LT	OV	34	53+50, 27' RT	OV
5	51+95, 27' LT	OV	35	53+00, 27' RT	PC
6	51+45, 27' LT	OV	36	52+50, 27' RT	PC
7	47+17, 27' LT	PC	37	51+30, 27' RT	PC
8	46+67, 27' LT	PC	38	50+80, 27' RT	PC
9	45+67, 27' LT	OV	39	50+30, 27' RT	OV
10	45+17, 27' LT	PC	40	49+80, 27' RT	OV
11	43+73, 27' LT	PC	41	49+30, 27' RT	OV
12	43+23, 27' LT	OV	42	48+30, 27' RT	TE
13	42+73, 27' LT	PC	43	47+80, 27' RT	TE
14	41+73, 27' LT	PC	44	47+30, 27' RT	AR
15	41+23, 27' LT	PC	45	46+80, 27' RT	AR
16	40+73, 27' LT	OV	46	46+30, 27' RT	AR
17	39+73, 27' LT	OV	47	45+45, 27' RT	PC
18	61+98, 25' RT	UR	48	44+95, 27' RT	PC
19	61+46, 25' RT	TE	49	44+45, 27' RT	UR
20	60+94, 25' RT	TE	50	43+95, 27' RT	PC
21	61+42, 25' RT	PC	51	43+45, 27' RT	PC
22	59+50, 27' RT	PC	52	42+60, 27' RT	UR
23	59+00, 27' RT	AR	53	41+60, 27' RT	UR
24	58+50, 27' RT	AR	54	41+10, 27' RT	AR
25	58+00, 27' RT	TE	55	40+60, 27' RT	AR
26	57+50, 27' RT	TE	56	40+10, 27' RT	OV
27	57+00, 27' RT	TE	57	39+60, 27' RT	OV
28	56+50, 27' RT	QA			
29	56+00, 27' RT	QA			
30	55+50, 27' RT	TE			

PLANT LEGEND

SYMBOL	QUANTITY	BOTANICAL NAME	COMMON NAME	SIZE	SPACING	NOTES
AR	7	ACER RUBRUM	RED MAPLE	2-1/2" CAL.	SEE PLAN	B.B.
OV	17	OSTRYA VIRGINIANA	IRONWOOD	2-1/2" CAL.	SEE PLAN	B.B.
PC	18	PYRUS CALLERYANA	CALLERY PEAR	2-1/2" CAL.	SEE PLAN	B.B.
QA	2	QUERCUS ALBA	WHITE OAK	2-1/2" CAL.	SEE PLAN	B.B.
TE	9	TILIA EUCHLORA "REDMOND"	REDMOND LINDEN	2-1/2" CAL.	SEE PLAN	B.B.
UR	4	ULMUS X "REGAL"	REGAL HYBRID ELM	3" CAL.	SEE PLAN	B.B.



- PRUNE DAMAGED & BROKEN BRANCHES AND TWIGS AS INDICATED BY GROWTH HABIT DO NOT CUT LEADERS & TERMINAL BUDS.
- SET TREE PLUMB IN CENTER OF PIT
- PRUNE 2/3 UP TREE OR TO FIRST BRANCH
- BURLAP TREE WRAP (30% OVERLAP) SHALL BE TIED FROM A POINT OVER LOWEST BRANCH TO TOP OF BALL SECURE WITH TWINE
- REMOVE ALL WIRE AND 1/3 BURLAP WRAP FROM TOP OF BALL.
- SET BALL AT LEVEL SO THAT TOP OF BALL IS AT FINISHED GRADE AFTER SETTLEMENT
- NOMINAL PLANTING SOIL ON TOP OF BALL
- 4" SHREDDED HARDWOOD MULCH, WITHIN SAUCER
- CONSTRUCT A 3" SAUCER WITH SOIL 4" DIAMETER FINISHED GRADE
- PLANTING SOIL MIXTURE (SEE GENERAL NOTES)
- EXISTING SUBGRADE
- MULCH MIXED WITH SOIL
- GRAVEL BASE FOR DRAINAGE, DIAMETER OF GRAVEL AREA SHALL BE NO GREATER THAN HALF OF THE WIDTH OF THE ROOT BALL.

REVISIONS	
NAME	DATE

ILLINOIS DEPARTMENT OF TRANSPORTATION
PFEIFFER ROAD IMPROVEMENT

LANDSCAPING DETAILS

SCALE: 1" = 50'
DATE: JUNE 06, 2005

DRAWN BY: RMC
DESIGNED BY: RMC
CHECKED BY: RMC