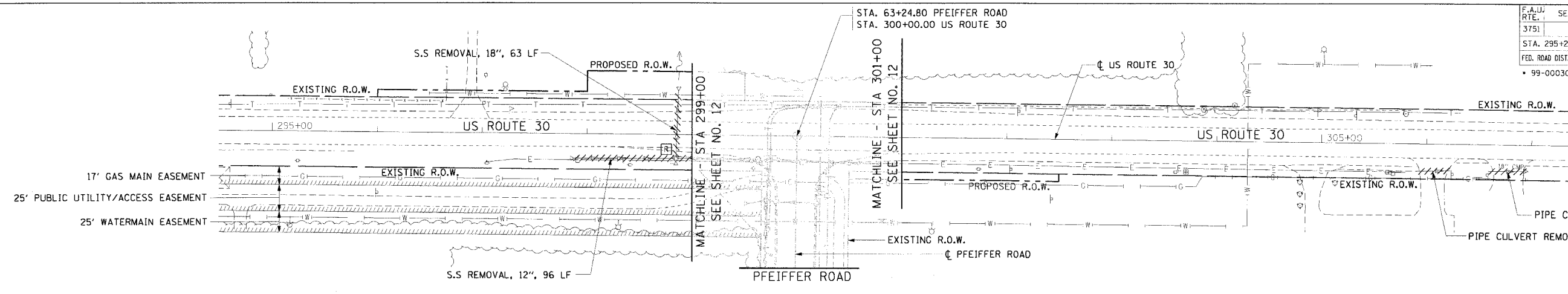
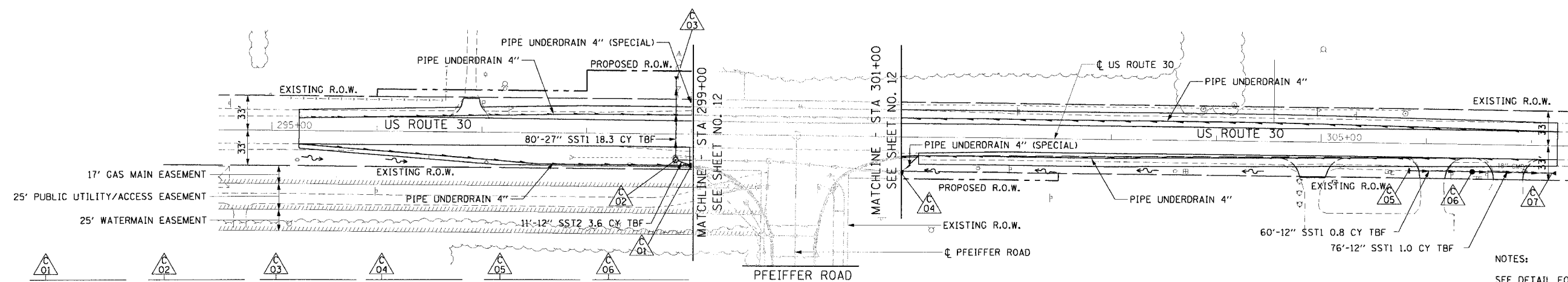


F.A.U. RTE.	SECTION	COUNTY	TOTAL SHEETS
3751		WILL	61
STA. 295+25.84 TO STA. 306+39.34		FED. AID PROJECT	83803
FED. ROAD DIST. NO.		ILLINOIS	
99-00030-00-PV			



EXISTING UTILITIES AND REMOVALS - US ROUTE 30

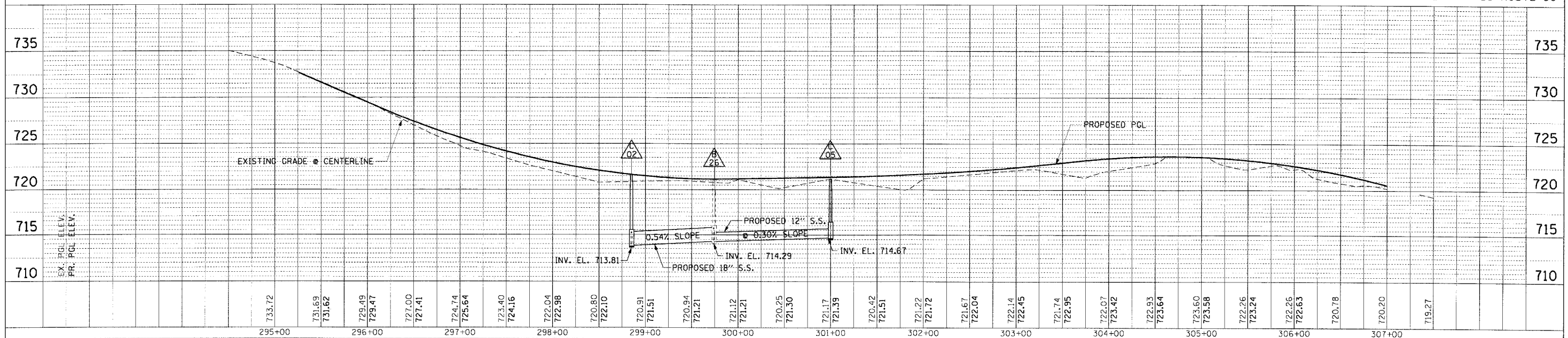


SCALE: H: 1"=50'
V: 1"=5'

NOTES:
SEE DETAIL FOR RIPRAP AT FLARED END SECTIONS ON SHEET NUMBER 15.
SEE SHEET NUMBER 15 FOR SCHEDULE OF PIPE UNDERDRAIN 4" AND PIPE UNDERDRAIN 4" (SPECIAL).

PROPOSED DRAINAGE PLAN - US ROUTE 30

01	02	03	04	05	06	07
CB - TY A, 4' DIA. TYPE 23, F & G 299+00, 30.00' RT RIM. 720.91 INV. (NW) 716.74 INV. (SE) 716.74	MH - TY A, 4' DIA. TYPE 1F, CL 298+85, 25.00' RT RIM. 721.35 INV. (E) 713.81 INV. (SE) 716.24 INV. (N) 713.81	PRCFES, 27" 298+85, 55.00' LT ELEV. 713.50	CB - TY A, 4' DIA. TYPE B GRATE 301+00, 34.00' RT RIM. 719.00 INV. (W) 714.67	INL - TY A, 2' DIA. TYPE B GRATE 305+84, 26.00' RT RIM. 721.40 INV. (E) 719.34	CB - TY A, 4' DIA. TYPE B GRATE 306+44, 26.00' RT RIM. 720.80 INV. (W) 719.04 INV. (E) 719.04	PRCFES, 12" 307+20, 26.00' RT INV ELEV. 718.66



DRAINAGE AND UTILITY - US ROUTE 30
STA 295+25.84 TO STA. 306+39.34

DATE: _____ BY: _____
PLAN NO. _____
DATE: _____ BY: _____
PROFILE NO. _____

DATE: _____ BY: _____
PROFILE NO. _____