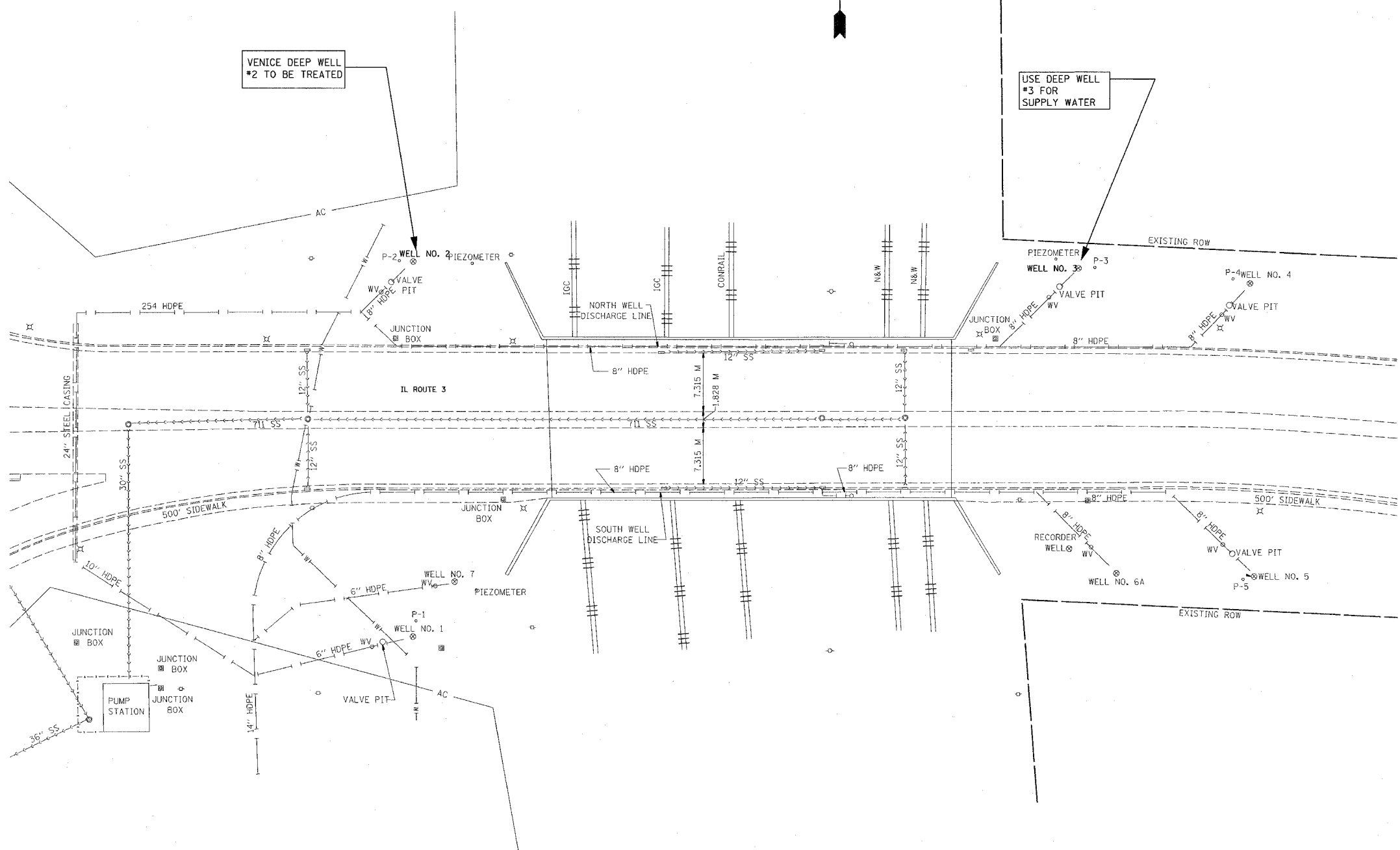


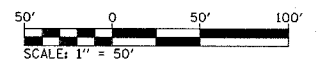
F.A.P. RTE.	SECTION	COUNTY	TOTAL SHEETS	SHEET NO.
VAR.	**	VARIOUS	8	4
STA.	TO STA.			
FED. ROAD DIST. NO.	ILLINOIS	FED. AID PROJECT		
** DIST 8 DEEP WELLS 2006-1				



VENICE DEEP WELL #2 TO BE TREATED

USE DEEP WELL #3 FOR SUPPLY WATER

NOTE: HOSE FOR SUPPLY WATER MAY BE PLACED ON SIDE WALK WHILE IN USE, BUT MUST BE REMOVED OVER NIGHT.



ILLINOIS DEPARTMENT OF TRANSPORTATION  
**LOCATION 1  
 VENICE WELLS  
 SITE PLAN**  
 VARIOUS ROUTES  
 DISTRICT 8 DEEP WELLS 2006-1  
 VARIOUS COUNTIES

REVISIONS	
NAME	DATE

DRAWN BY:

PLOT DATE: 7/7/2005

PLAN	SURVEYED	DATE
NOTE BOOK NO.	ALIGNED	
	CHECKED	
	BY	

6/6/05 7:17/2005  
 c:\projects\76933\plan\p1n87685.dgn  
 REF: