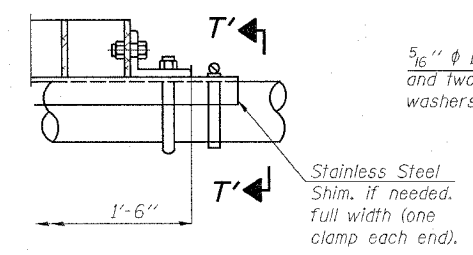
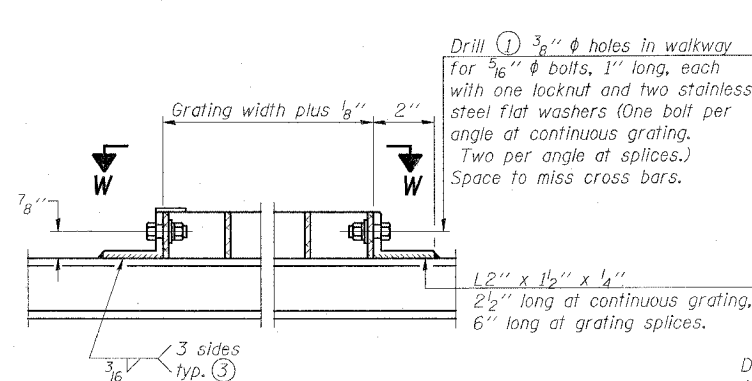
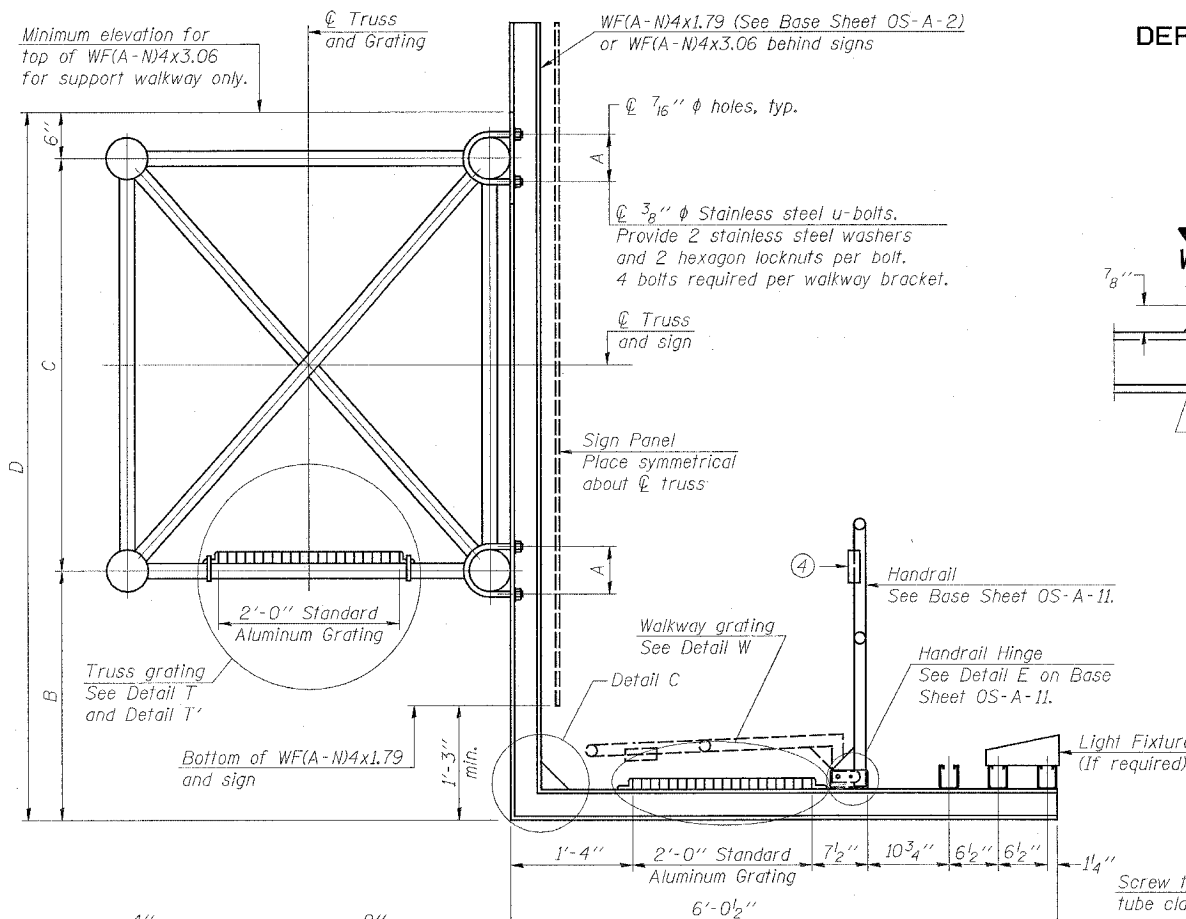


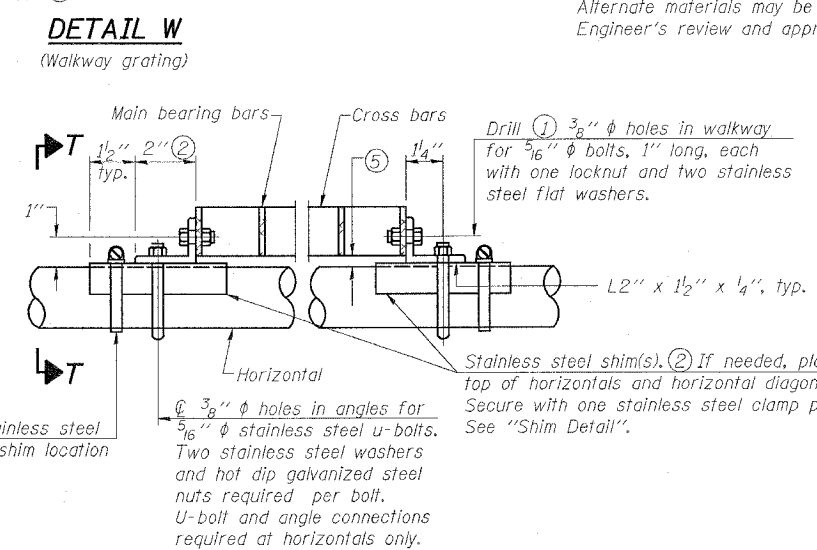
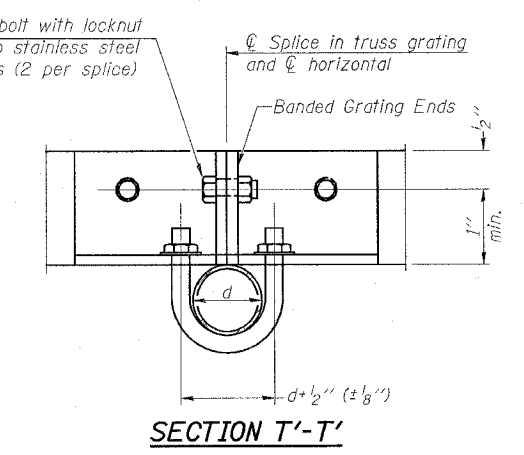
STATE OF ILLINOIS  
DEPARTMENT OF TRANSPORTATION

ROUTE NO.	SECTION	COUNTY	SHEET NO.	SHEET NO.
FAI 64	82-6K-1	ST. CLAIR	188	95
FED. ROAD DIST. NO. 7	ILLINOIS	FED. AID PROJECT		

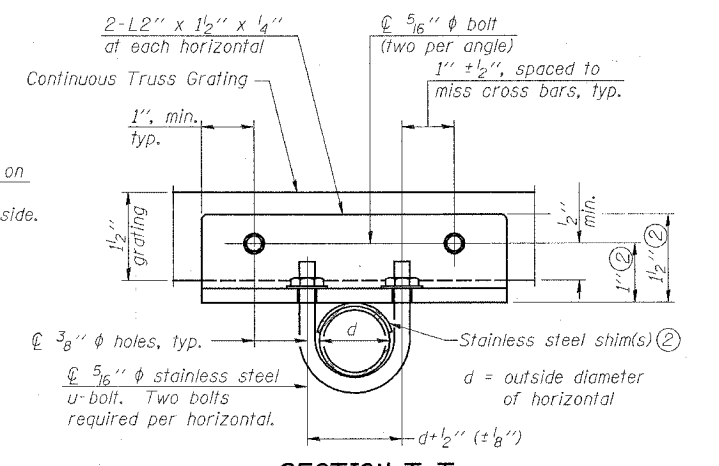
Contract # 76815



**DETAIL T'**  
(Truss grating splice)  
Details not shown same as Detail T. Alternate materials may be used subject to the Engineer's review and approval.



**DETAIL T**  
(Continuous Truss grating)



**SECTION T-T**

**SPECIFICATIONS FOR STANDARD ALUMINUM GRATING**

Main Bearing Bars shall be 3/16" x 1/2" on 1 3/16" centers and conform to ASTM B221 Alloy 6061-T6.

Cross bars shall be 3/16" x 1/2" on 4" centers and conform to ASTM B221 Alloy 6063-T5 or 6061-T6.

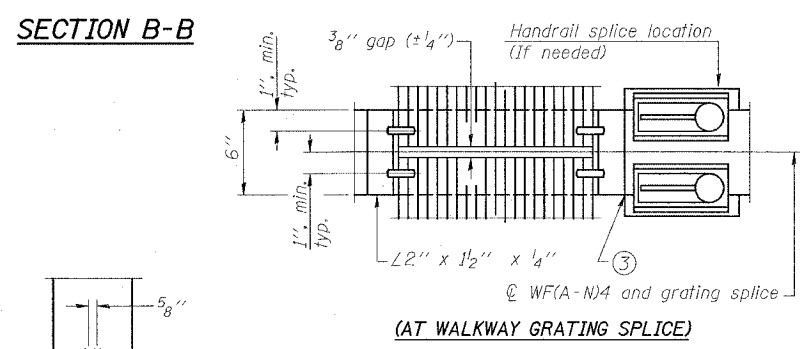
**OR**

Aluminum Grating with modified "I" sections for main bearing bars shall meet the following requirements:

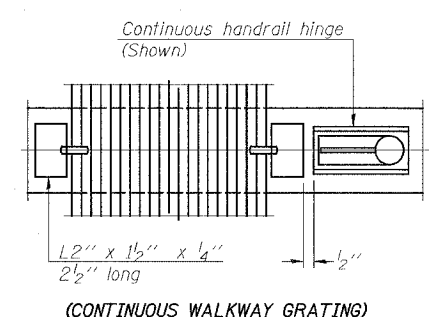
Main bars shall conform to ASTM B221 Alloy 6061-T6 and have a minimum section modulus equal to 0.0705 in.<sup>3</sup> per bar, a depth of 1 1/2", spaced on 1 3/16" centers.

Cross bars shall conform to ASTM B221 Alloy 6063-T5 or T-42 and spaced on 4" centers.

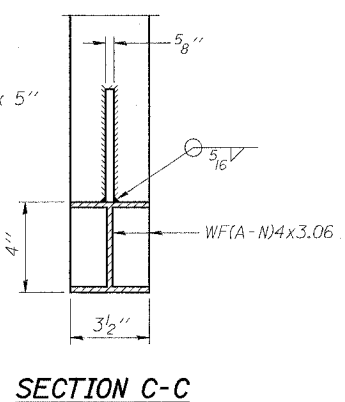
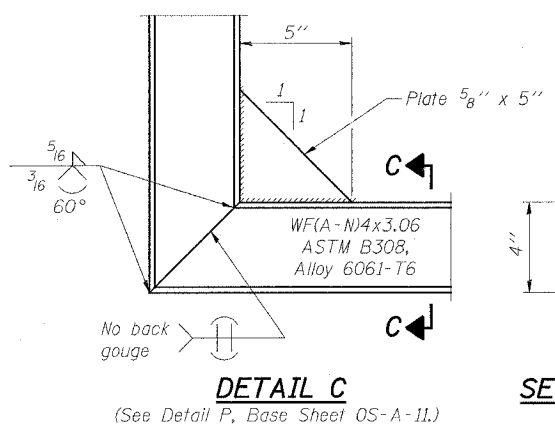
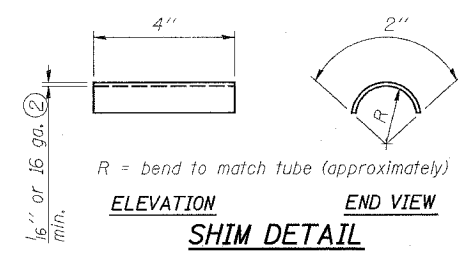
Structure Number	Station	A	B	C	D
BS0821064R014.1	13+50	7"	4'-4 1/2"	5'-3"	10'-1 1/2"



**(AT WALKWAY GRATING SPLICE)**



**SECTION W-W**  
(CONTINUOUS WALKWAY GRATING)



DESIGNED	200
CHECKED	EXAMINED
DRAWN	PASSED
CHECKED	ENGINEER OF BRIDGES AND STRUCTURES

NUMBER	REVISION	DATE

**OVERHEAD SIGN STRUCTURES  
ALUMINUM WALKWAY DETAILS**

FAI ROUTE 64  
SECTION 82-6K-1  
ST. CLAIR COUNTY