

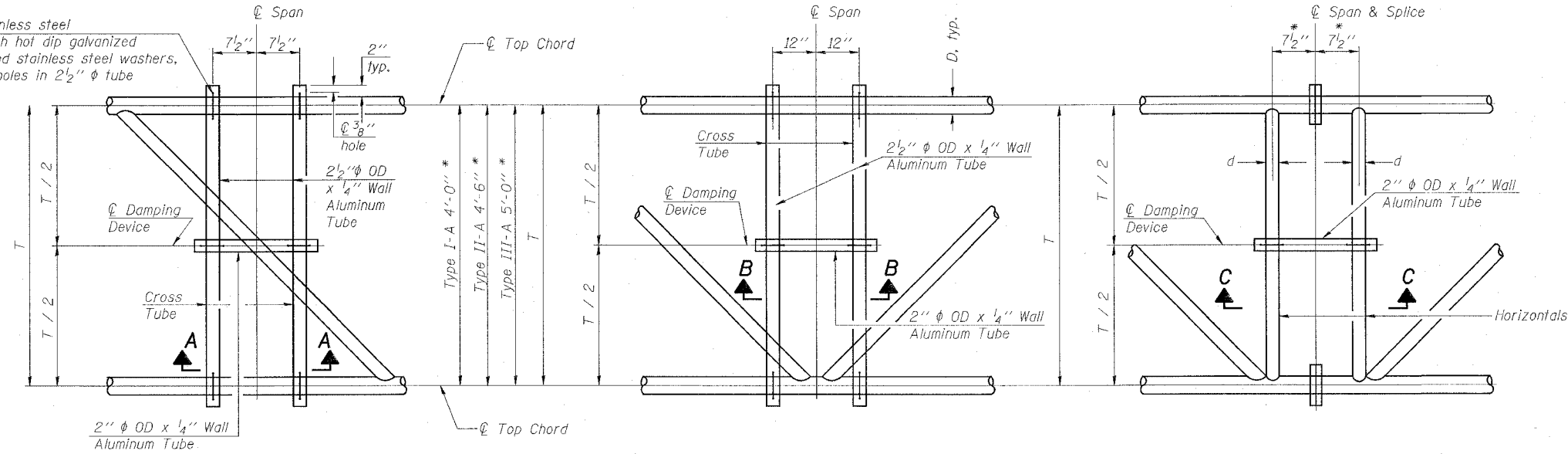
STATE OF ILLINOIS  
DEPARTMENT OF TRANSPORTATION

\* Center of horizontal to center of splice dimension may vary. Verify before drilling holes in mounting tube.

ROUTE NO.	SECTION	COUNTY	TOTAL SHEETS	SHEET NO.	SHEET NO. 4
FAI 64	82-6K-1	ST. CLAIR	188	91	10 SHEETS
FED. ROAD DIST. NO. 7	ILLINOIS	FED. AID PROJECT			

Contract # 76815

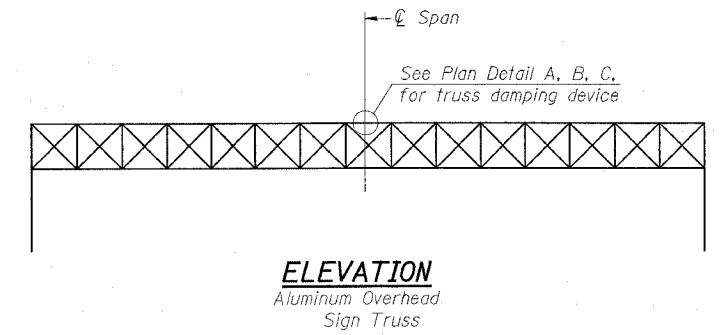
5/16" φ stainless steel U-bolt with hot dip galvanized locknuts and stainless steel washers, typ. 3/8" φ holes in 2 1/2" φ tube



**PLAN DETAIL "A"**  
Span between Panel Points

**PLAN DETAIL "B"**  
Span at Panel Point

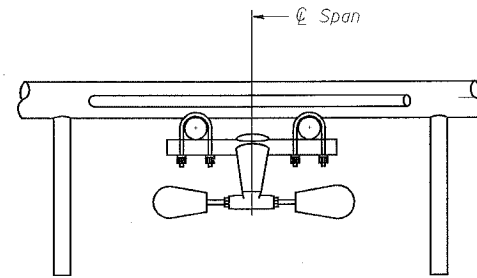
**PLAN DETAIL "C"**  
Span at Chord Splice



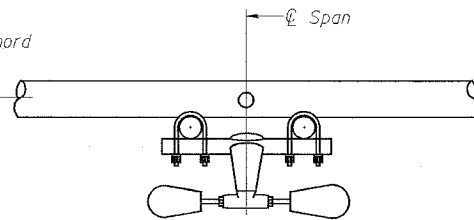
**ELEVATION**  
Aluminum Overhead Sign Truss

**NOTES**  
Damper: One damper per truss. (31 lbs. Stockbridge-Type Aluminum)  
Cost included in Overhead Sign Structure...

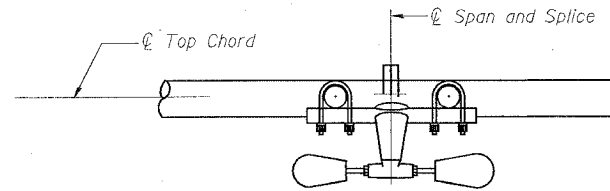
Materials: Aluminum tubes shall be ASTM B221 alloy 6061 temper T6. Cost included in Overhead Sign Structure...



**SECTION A-A**

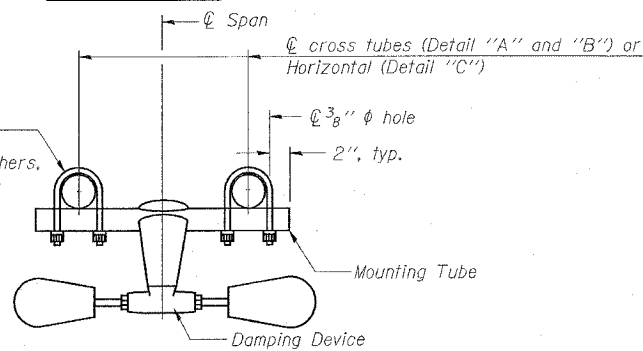


**SECTION B-B**

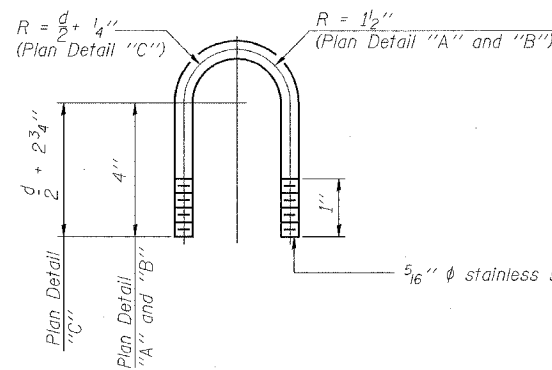


**SECTION C-C**

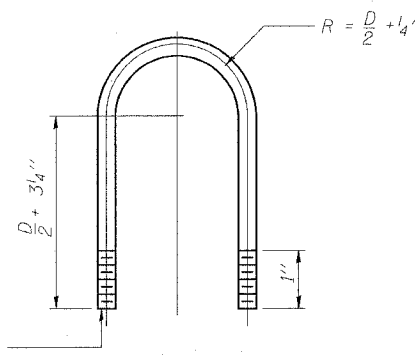
5/16" φ stainless steel U-bolt with hot dip galvanized locknuts and stainless steel washers, typ. 3/8" φ holes in mounting tube



**TRUSS DAMPING DEVICE CONNECTION DETAIL**  
(Typical)



**DAMPING DEVICE MOUNTING TUBE U-BOLT DETAIL**  
(Typical)



**TOP CHORD TO CROSS TUBE U-BOLT DETAIL**  
(Typical - Detail "A" and "B")

DESIGNED	200
CHECKED	EXAMINED
DRAWN	PASSED
CHECKED	ENGINEER OF BRIDGES AND STRUCTURES

OS-A-D

1-7-05

**OVERHEAD SIGN STRUCTURE DAMPING DEVICE**

FAI ROUTE 64  
SECTION 82-6K-1  
ST. CLAIR COUNTY