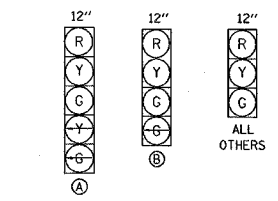
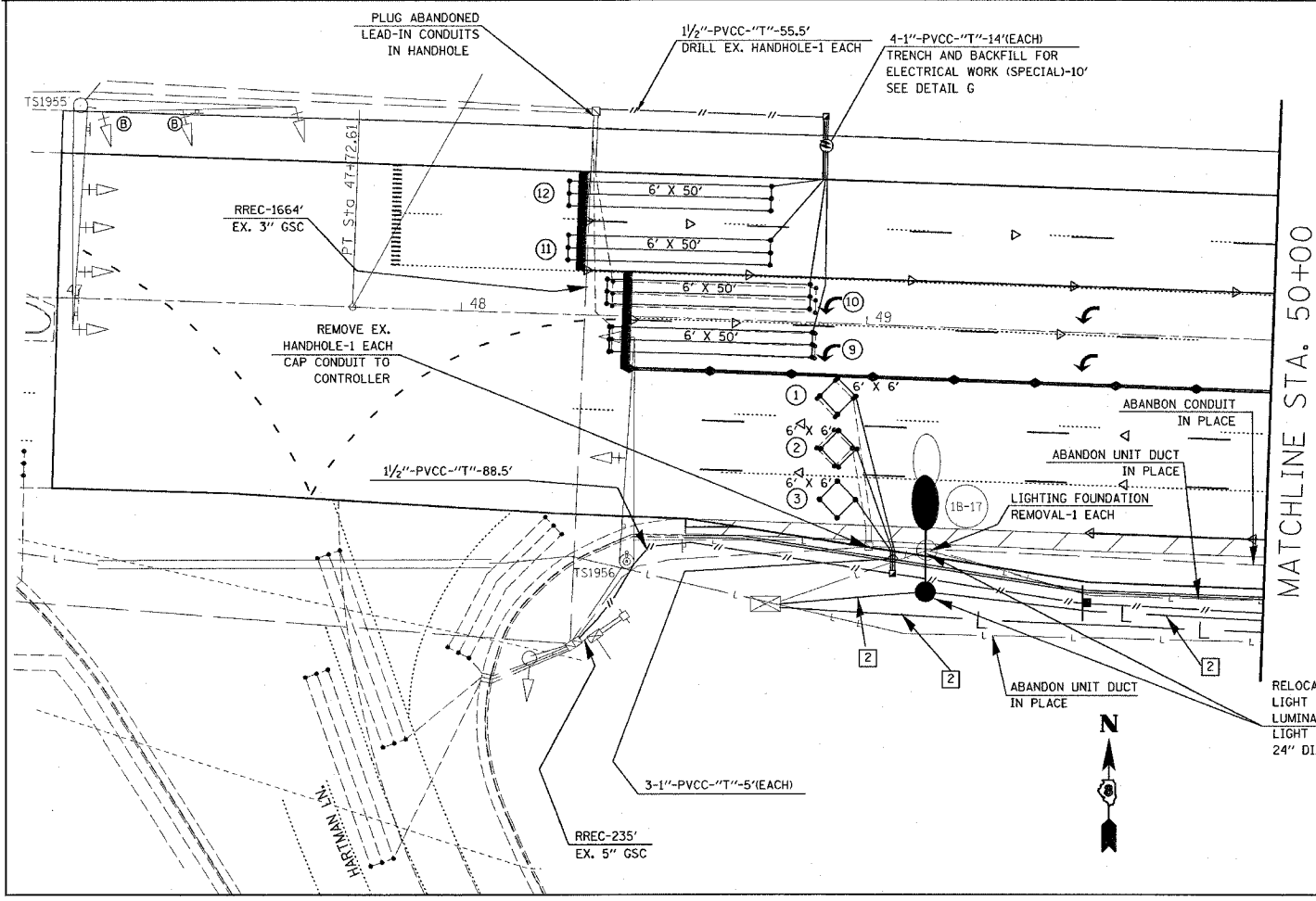
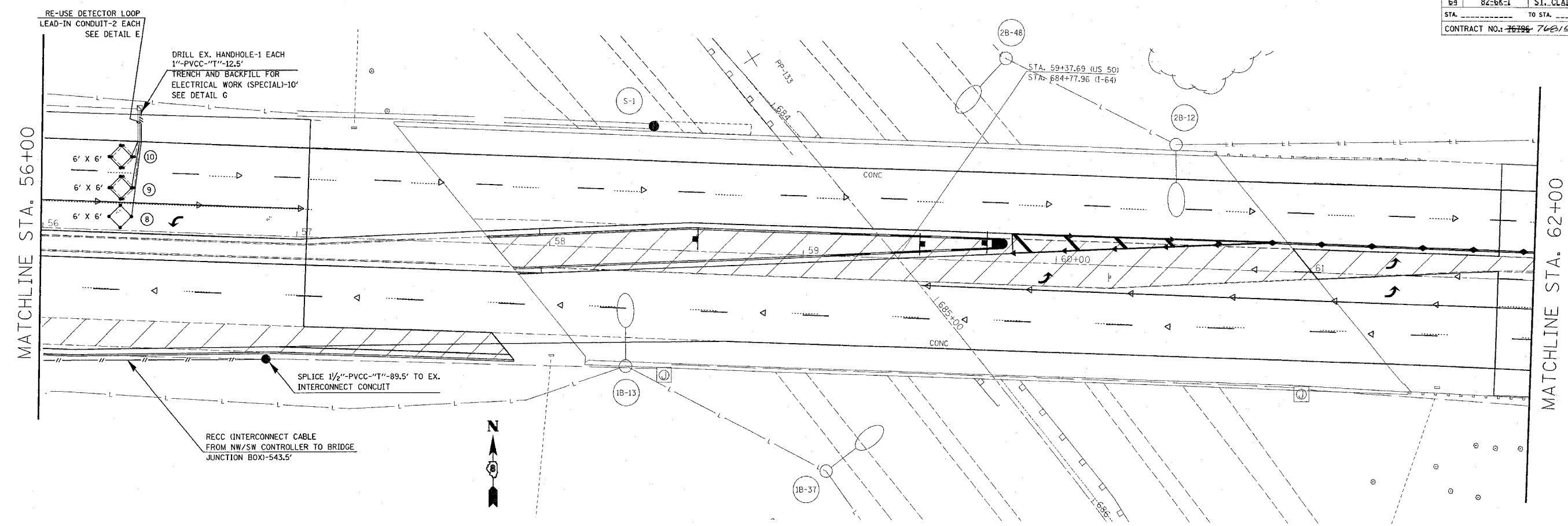


| | |
|------|------|
| PLAN | DATE |
| BY | |
| DATE | |
| BY | |
| DATE | |
| BY | |
| DATE | |
| BY | |
| DATE | |

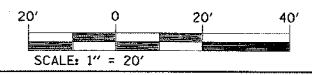


EXISTING AND PROPOSED TRAFFIC SIGNAL FACES

DETECTOR LOOP REQUIREMENTS AND CALCULATIONS FOR W. HIGHWAY 50 AND HARTMAN LANE

| LOOP | PHASE (Ø) | LOOP SIZE (FT) | REQUIRED # OF TURNS | CALCULATED INDUCTANCE MICROHENRIES (µH) | CALCULATED RESISTANCE OHMS (R) |
|------------------|-----------|----------------|---------------------|---|--------------------------------|
| 1.-6. NA | NA | NA | NA | NA | NA |
| 7. WB CCO A | 5 | 6' X 6' | 6 | 365.0 | 2.9 |
| 8. WB CCO B | 5 | 6' X 6' | 6 | 367.4 | 2.9 |
| 9. WB THRU CD A | 5 | 6' X 50' | 3-6-3 | 840.2 | 2.8 |
| 10. WB THRU CD B | 5 | 6' X 50' | 3-6-3 | 837.7 | 2.8 |
| 11. WB LT CD A | 5 | 6' X 50' | 3-6-3 | 836.3 | 2.7 |
| 12. WB LT CD B | 5 | 6' X 50' | 3-6-3 | 834.7 | 2.7 |

THE ABOVE VALUES ARE CALCULATED OF COMBINED LOOP AND LEAD-IN INDUCTANCE AND RESISTANCE. ACTUAL MEASURED VALUES SHOULD BE WITHIN +/- 20% OF THESE VALUES.



| REVISIONS | |
|-----------|------|
| NAME | DATE |
| | |
| | |
| | |
| | |
| | |

ILLINOIS DEPARTMENT OF TRANSPORTATION
LIGHTING & TRAFFIC SIGNAL PLAN
 1. W. HWY. 50-NE/SE RAMP
 TO NW-SW RAMP
 2. W. HWY. 50 AND HARTMAN LN.
 FAI 64
 SECTION 82-6K-1
 ST. CLAIR COUNTY

DRAWN BY:

PLOT DATE: 7/1/2005