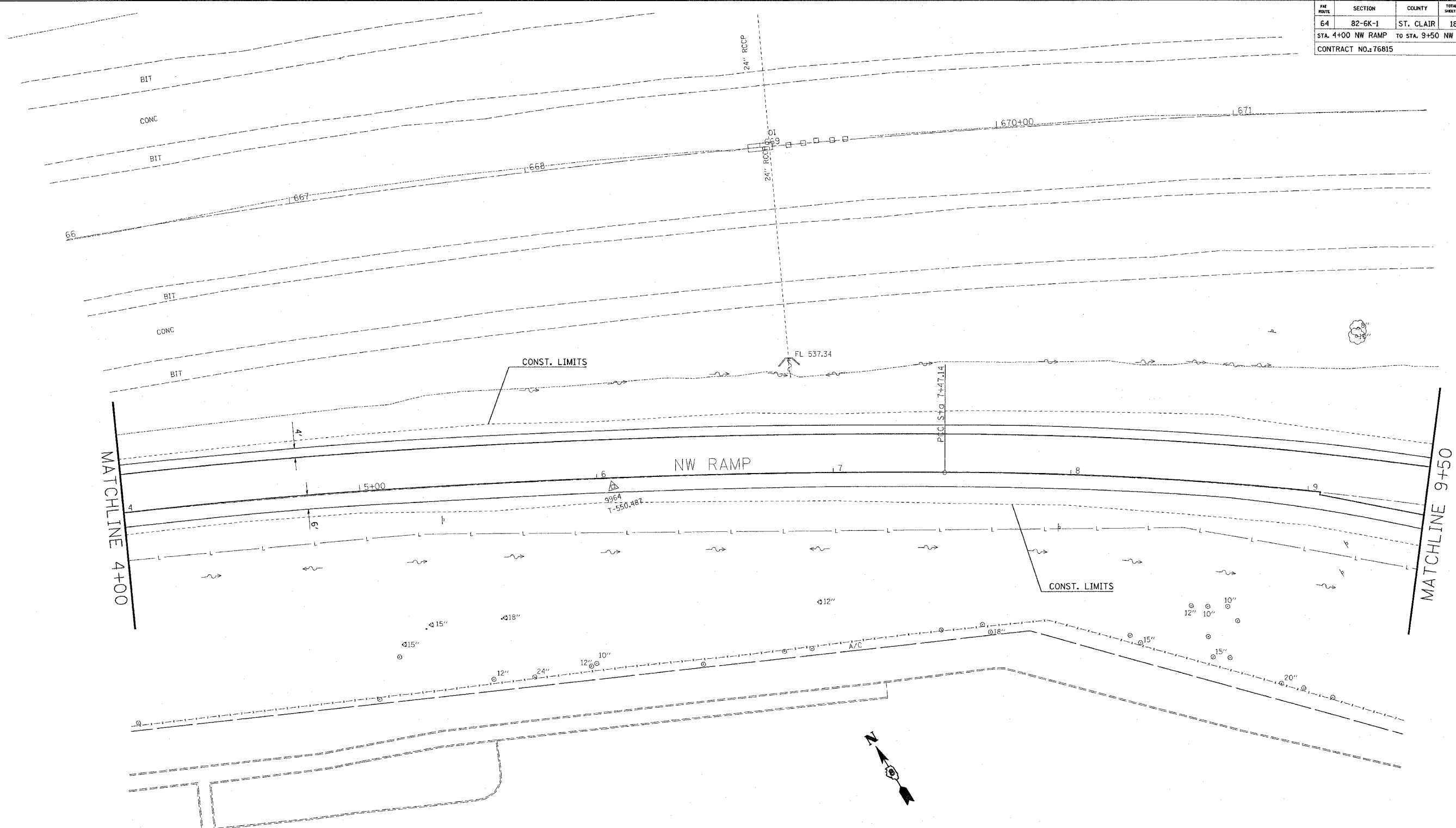


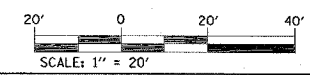
FAI ROUTE	SECTION	COUNTY	TOTAL SHEETS	SHEET NO.
64	82-6K-1	ST. CLAIR	188	34
STA. 4+00 NW RAMP TO STA. 9+50 NW RAMP				
CONTRACT NO.: 76815				

PLAN	SURVEYED	DATE
NO.	BY	
NOTE BOOK NO. _____		
RT. OF WAY CHECKED _____		
CADD FILE NAME _____		



EXIST. CURVE W50RNW_C1
 PI STA. = 3+75.19
 $\Delta = 13^\circ 01' 26''$ (RT)
 $D = 1^\circ 44' 35''$
 $R = 3,286.89'$
 $T = 375.19'$
 $L = 747.14'$
 $E = 21.34'$
 $e =$
 $T.R. =$
 $S.E. RUN =$
 $P.C. STA. = 0+00.00$
 $P.T. STA. = 7+47.14$

EXIST. CURVE W50RNW_C2 BIT
 PI STA. = 9+32.71
 $\Delta = 12^\circ 56' 05''$ (RT)
 $D = 3^\circ 30' 00''$
 $R = 1,637.02'$
 $T = 185.57'$
 $L = 369.56'$
 $E = 10.48'$
 $e =$
 $T.R. =$
 $S.E. RUN =$
 $P.C. STA. = 7+47.14$
 $P.T. STA. = 11+16.70$



REVISIONS	
NAME	DATE

ILLINOIS DEPARTMENT OF TRANSPORTATION
PLAN VIEW
NW RAMP
 FAI ROUTE 64
 SECTION 82-6K-1
 ST. CLAIR COUNTY
 DRAWN BY:
 PLOT DATE: 7/1/2005

7/1/2005
 c:\p\projects\76815\plan\p1-66594.dgn
 REF: 66594.dwg
 REF: 66594.dwg