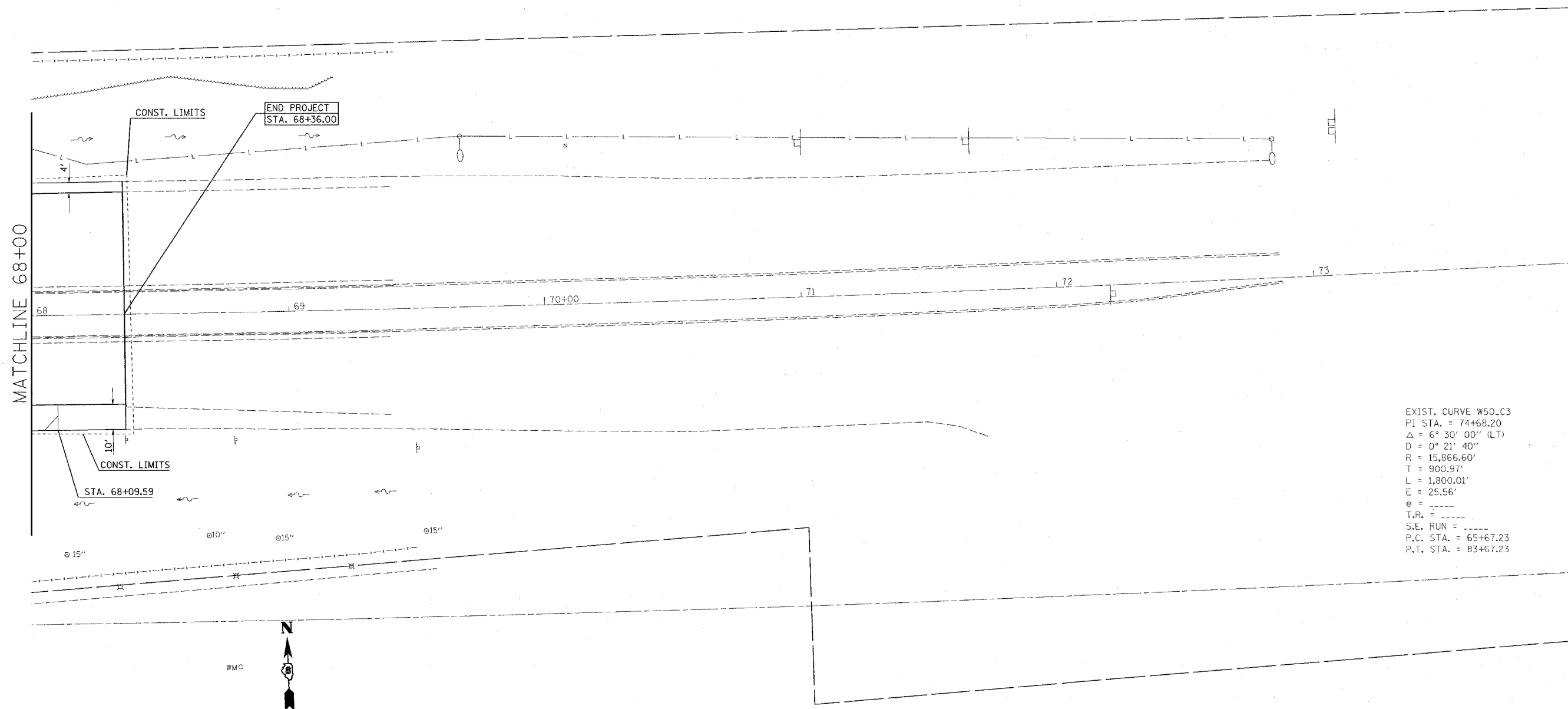
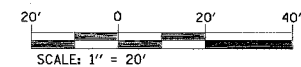


FILE NO.	SECTION	COUNTY	TOTAL SHEETS	SHEET NO.
64	82-6K-1	ST. CLAIR	188	32
STA. 68+00		TO STA. 68+36		
CONTRACT NO.: 76815				

PLAN	SURVEYED	DATE
	PLOTTED	
	NOTED	
	NO. OF SHEETS	
	NO. OF SHEETS CHECKED	
	ADD FILE NAME	



EXIST. CURVE W50.C3
 P.I. STA. = 74+68.20
 $\Delta = 6^\circ 30' 00''$ (LT)
 $D = 0^\circ 21' 40''$
 $R = 15,866.60'$
 $T = 900.97'$
 $L = 1,800.01'$
 $E = 25.56'$
 $e =$
 $T.R. =$
 $S.E. RUN =$
 $P.C. STA. = 65+67.23$
 $P.T. STA. = 83+67.23$



ILLINOIS DEPARTMENT OF TRANSPORTATION
PLAN VIEW

FAI ROUTE 64
 SECTION 82-6K-1
 ST. CLAIR COUNTY

REVISIONS	
NAME	DATE

DRAWN BY:

PLOT DATE: 7/1/2005