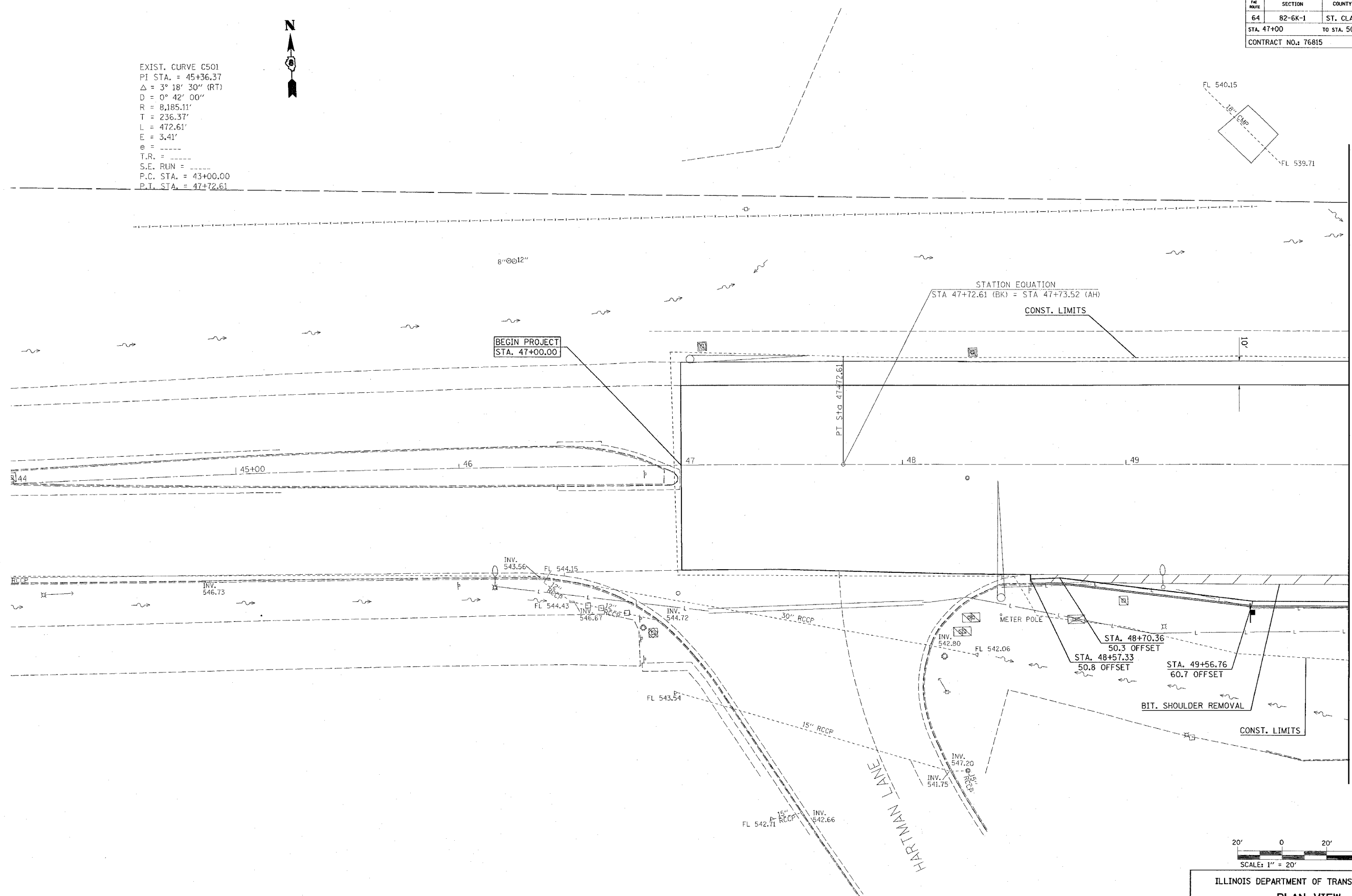


FAI ROUTE	SECTION	COUNTY	TOTAL SHEETS	SHEET NO.
64	82-6K-1	ST. CLAIR	188	28
STA. 47+00		TO STA. 50+00		
CONTRACT NO.: T6815				

EXIST. CURVE C501
 PI STA. = 45+36.37
 $\Delta = 3^\circ 18' 30''$ (RT)
 $D = 0^\circ 42' 00''$
 $R = 8,185.11'$
 $T = 236.37'$
 $L = 472.61'$
 $E = 3.41'$
 $e = \text{-----}$
 $T.R. = \text{-----}$
 $S.E. RUN = \text{-----}$
 $P.C. STA. = 43+00.00$
 $P.T. STA. = 47+72.61$



PLAN	DATE	BY
SUBMITTED		
PLOTTED		
ALIGNED		
REVISIONS		
NO.		
DATE		
BY		
FILE NAME		



MATCHLINE 50+00



REVISIONS	
NAME	DATE

ILLINOIS DEPARTMENT OF TRANSPORTATION
PLAN VIEW
 FAI ROUTE 64
 SECTION 82-6K-1
 ST. CLAIR COUNTY
 DRAWN BY:
 PLOT DATE: 7/1/2005

6/24/05
 C:\projects\64\plan\plan050704.dgn
 REF: plot050704
 REF: d:\files\64