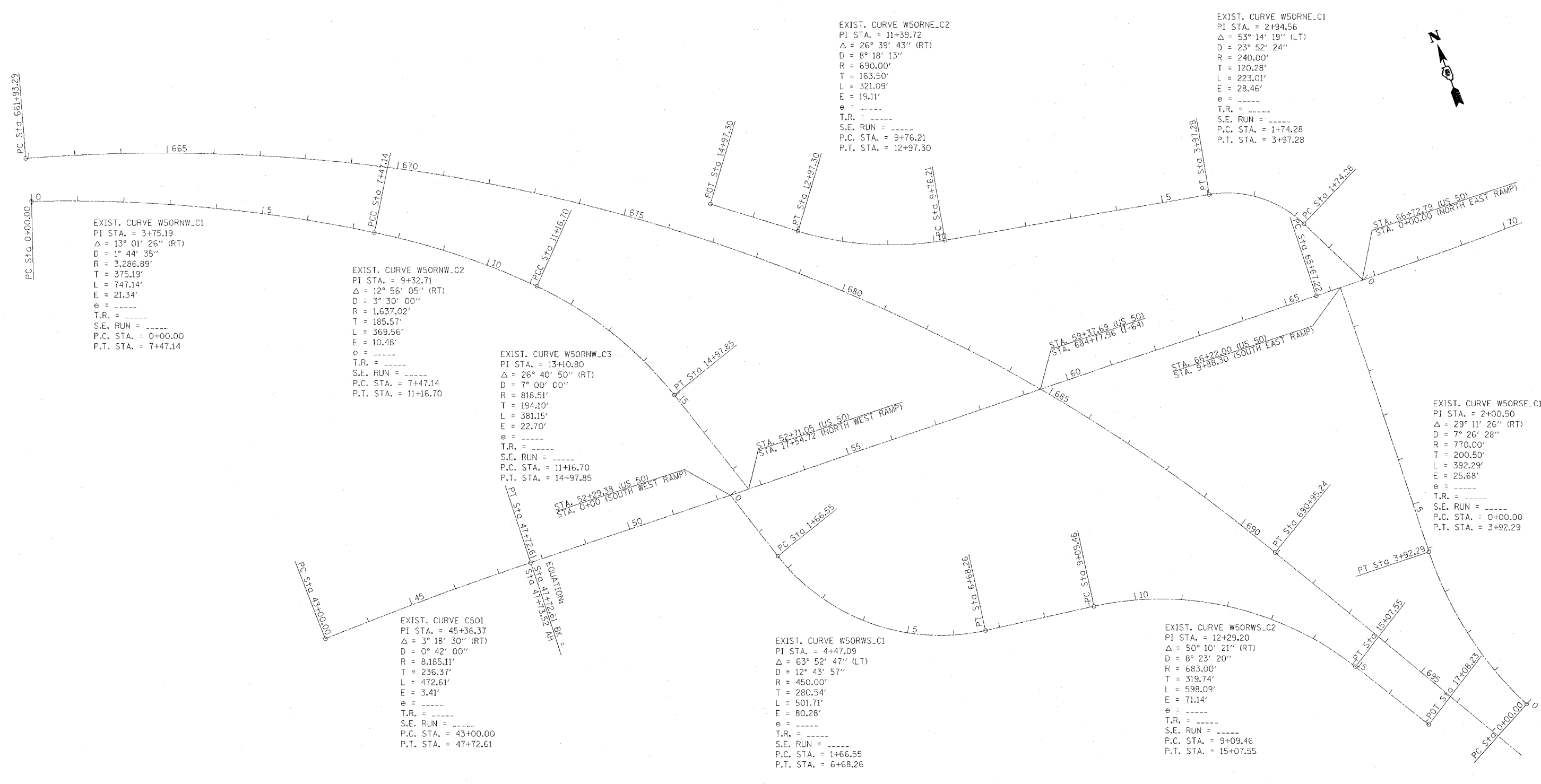


FAI ROUTE	SECTION	COUNTY	TOTAL SHEETS	SHEET NO
64	82-6K-1	ST. CLAIR	188	27

CONTRACT NO.: 76815



PLAN	SURVEYED	DATE
NOTE BOOK	ALIGNED	CHECKED
NO. _____	FILE MARKED	FILE MARKED



EXIST. CURVE W5ORNW_C1
 PI STA. = 3+75.19
 $\Delta = 13^\circ 01' 26''$ (RT)
 D = 1° 44' 35"
 R = 3,286.89'
 T = 375.19'
 L = 747.14'
 E = 21.34'
 e = -----
 T.R. = -----
 S.E. RUN = -----
 P.C. STA. = 0+00.00
 P.T. STA. = 7+47.14

EXIST. CURVE W5ORNW_C2
 PI STA. = 9+32.71
 $\Delta = 12^\circ 56' 05''$ (RT)
 D = 3° 30' 00"
 R = 1,637.02'
 T = 185.57'
 L = 369.56'
 E = 10.48'
 e = -----
 T.R. = -----
 S.E. RUN = -----
 P.C. STA. = 7+47.14
 P.T. STA. = 11+16.70

EXIST. CURVE W5ORNW_C3
 PI STA. = 13+10.80
 $\Delta = 26^\circ 40' 50''$ (RT)
 D = 7° 00' 00"
 R = 818.51'
 T = 194.10'
 L = 381.15'
 E = 22.70'
 e = -----
 T.R. = -----
 S.E. RUN = -----
 P.C. STA. = 11+16.70
 P.T. STA. = 14+97.85

EXIST. CURVE C501
 PI STA. = 45+36.37
 $\Delta = 3^\circ 18' 30''$ (RT)
 D = 0° 42' 00"
 R = 8,185.11'
 T = 236.37'
 L = 472.61'
 E = 3.41'
 e = -----
 T.R. = -----
 S.E. RUN = -----
 P.C. STA. = 43+00.00
 P.T. STA. = 47+72.61

EXIST. CURVE W5ORWS_C1
 PI STA. = 4+47.09
 $\Delta = 63^\circ 52' 47''$ (LT)
 D = 12° 43' 57"
 R = 450.00'
 T = 280.54'
 L = 501.71'
 E = 80.28'
 e = -----
 T.R. = -----
 S.E. RUN = -----
 P.C. STA. = 1+66.55
 P.T. STA. = 6+68.26

EXIST. CURVE W5ORNE_C2
 PI STA. = 11+39.72
 $\Delta = 26^\circ 39' 43''$ (RT)
 D = 8° 18' 13"
 R = 690.00'
 T = 163.50'
 L = 321.09'
 E = 19.11'
 e = -----
 T.R. = -----
 S.E. RUN = -----
 P.C. STA. = 9+76.21
 P.T. STA. = 12+97.30

EXIST. CURVE W5ORNE_C1
 PI STA. = 2+94.56
 $\Delta = 53^\circ 14' 19''$ (LT)
 D = 23° 52' 24"
 R = 240.00'
 T = 120.28'
 L = 223.01'
 E = 28.46'
 e = -----
 T.R. = -----
 S.E. RUN = -----
 P.C. STA. = 1+74.28
 P.T. STA. = 3+97.28

EXIST. CURVE W5ORSE_C1
 PI STA. = 2+00.50
 $\Delta = 29^\circ 11' 26''$ (RT)
 D = 7° 26' 28"
 R = 770.00'
 T = 200.50'
 L = 392.29'
 E = 25.68'
 e = -----
 T.R. = -----
 S.E. RUN = -----
 P.C. STA. = 0+00.00
 P.T. STA. = 3+92.29

EXIST. CURVE W5ORWS_C2
 PI STA. = 12+29.20
 $\Delta = 50^\circ 10' 21''$ (RT)
 D = 8° 23' 20"
 R = 683.00'
 T = 319.74'
 L = 598.09'
 E = 71.14'
 e = -----
 T.R. = -----
 S.E. RUN = -----
 P.C. STA. = 9+09.46
 P.T. STA. = 15+07.55

7/1/2005
 7/1/2005
 7/1/2005
 7/1/2005

REVISIONS	
NAME	DATE

ILLINOIS DEPARTMENT OF TRANSPORTATION
ALIGNMENT, TIES AND BENCHMARKS

FAI ROUTE 64
 SECTION 82-6K-1
 ST. CLAIR COUNTY

DRAWN BY:

PLOT DATE: 7/1/2005