

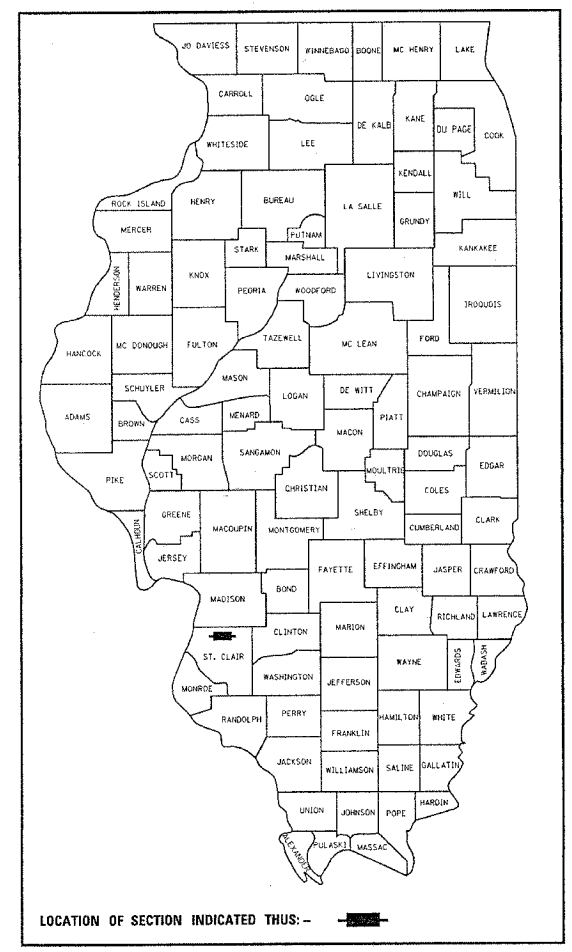
| FAI ROUTE | SECTION | COUNTY | TOTAL SHEETS | SHEET NO. |
|-----------|---------|-----------|--------------|-----------|
| 64 | 82-6K-1 | ST. CLAIR | 188 | 1 |

STATE OF ILLINOIS
DEPARTMENT OF TRANSPORTATION
DIVISION OF HIGHWAYS

**PROPOSED
HIGHWAY PLANS
FAI ROUTE 64 (I-64)
SECTION 82-6K-1
NHI-064-1(118)013
ST. CLAIR COUNTY
WIDENING & RESURFACING
C-98-081-04**

FOR INDEX OF SHEETS, SEE SHEET NO. 2

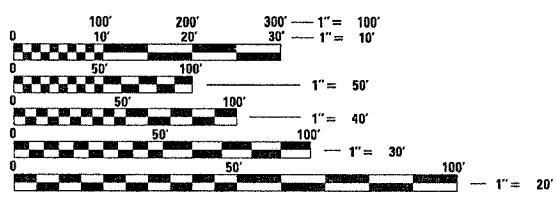
D-98-069-04



| ADT | |
|-------------------|-------------------|
| <u>N. W. RAMP</u> | <u>N. E. RAMP</u> |
| 2004 ADT=9400 | 2004 ADT=9300 |
| 2008 ADT=10700 | 2008 ADT=10700 |
| 2028 ADT=11800 | 2028 ADT=11800 |
| SU=2.4% | SU=2.3% |
| MU=4.1% | MU=3.0% |
| <u>US HWY 50</u> | <u>S. E. RAMP</u> |
| 2004 ADT=34100 | 2004 ADT=3200 |
| 2008 ADT=37300 | 2008 ADT=5500 |
| 2028 ADT=42000 | 2028 ADT=6900 |
| SU=3.2% | SU=2.0% |
| MU=3.1% | MU=1.6% |
| <u>S. W. RAMP</u> | |
| 2004 ADT=3900 | |
| 2008 ADT=5500 | |
| 2028 ADT=6900 | |
| SU=2.4% | |
| MU=2.2% | |

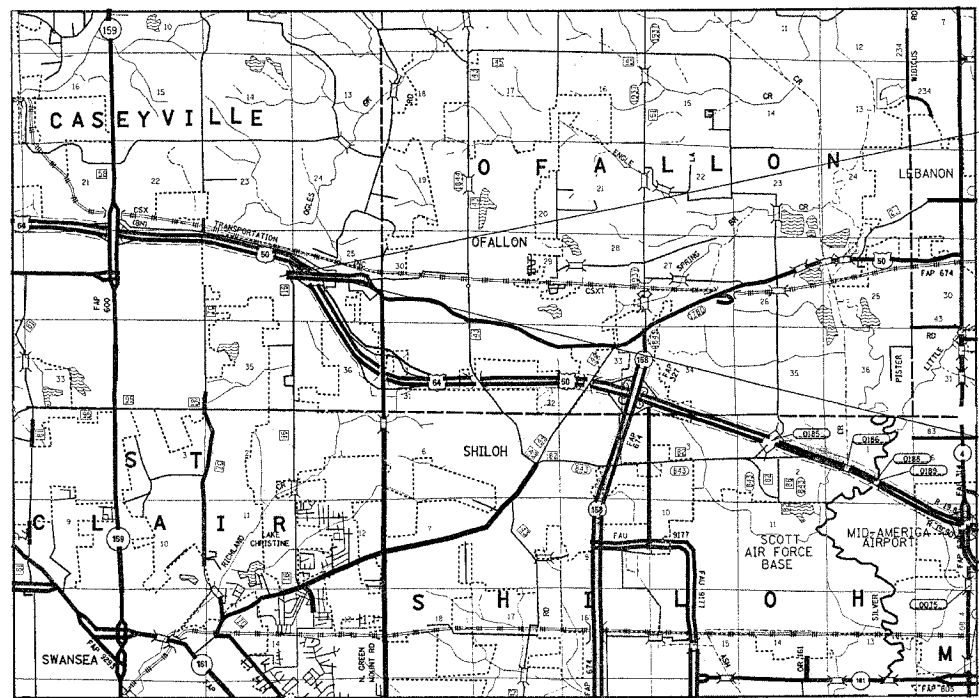
PROJECT ENGINEER: PATTI LEBEAU (618) 346-3179
SQUAD LEADER: CHERYL KEPLAR (618) 346-3186

MICROFILMED _____
REEL NUMBER _____
AWARDED _____
RESIDENT ENGINEER _____
AS BUILT CHANGES WERE MADE
ON THE FOLLOWING SHEETS



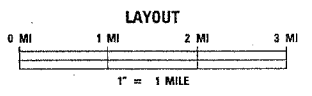
FULL SIZE PLANS HAVE BEEN PREPARED USING STANDARD ENGINEERING SCALES. REDUCED SIZED PLANS WILL NOT CONFORM TO STANDARD SCALES. IN MAKING MEASUREMENTS ON REDUCED PLANS, THE ABOVE SCALES MAY BE USED.

J.U.L.I.E.
JOINT UTILITY LOCATION INFORMATION FOR EXCAVATION
1-800-892-0123



BEGIN
STA 47+00.00
LAT: 38.59261
LONG: -89.94750

END
STA 68+36.00
LAT: 38.59240
LONG: -89.94095



GROSS LENGTH = 2,136 FT = .40 MI
NET LENGTH = 2,136 FT = .40 MI

DESIGN DESIGNATION
FAI 64 RAMP-11600(2026) INTERSTATE RAMP 7.9 (FD-20)
WEST HWY 50-41368(2026) ARTERIAL 7.39 (FD-20)

STATE OF ILLINOIS
DEPARTMENT OF TRANSPORTATION
DIVISION OF HIGHWAYS

SUBMITTED July 6 2005
Mary C. Lamic
DEPUTY DIRECTOR OF HIGHWAYS, REGION ENGINEER

August 19, 2005
Mike Ware
ENGINEER OF DESIGN AND ENVIRONMENT

August 19, 2005
Victor Moders
DIRECTOR OF HIGHWAYS, CHIEF ENGINEER

**PRINTED BY THE AUTHORITY
OF THE STATE OF ILLINOIS**

CONTRACT NO. 76815