

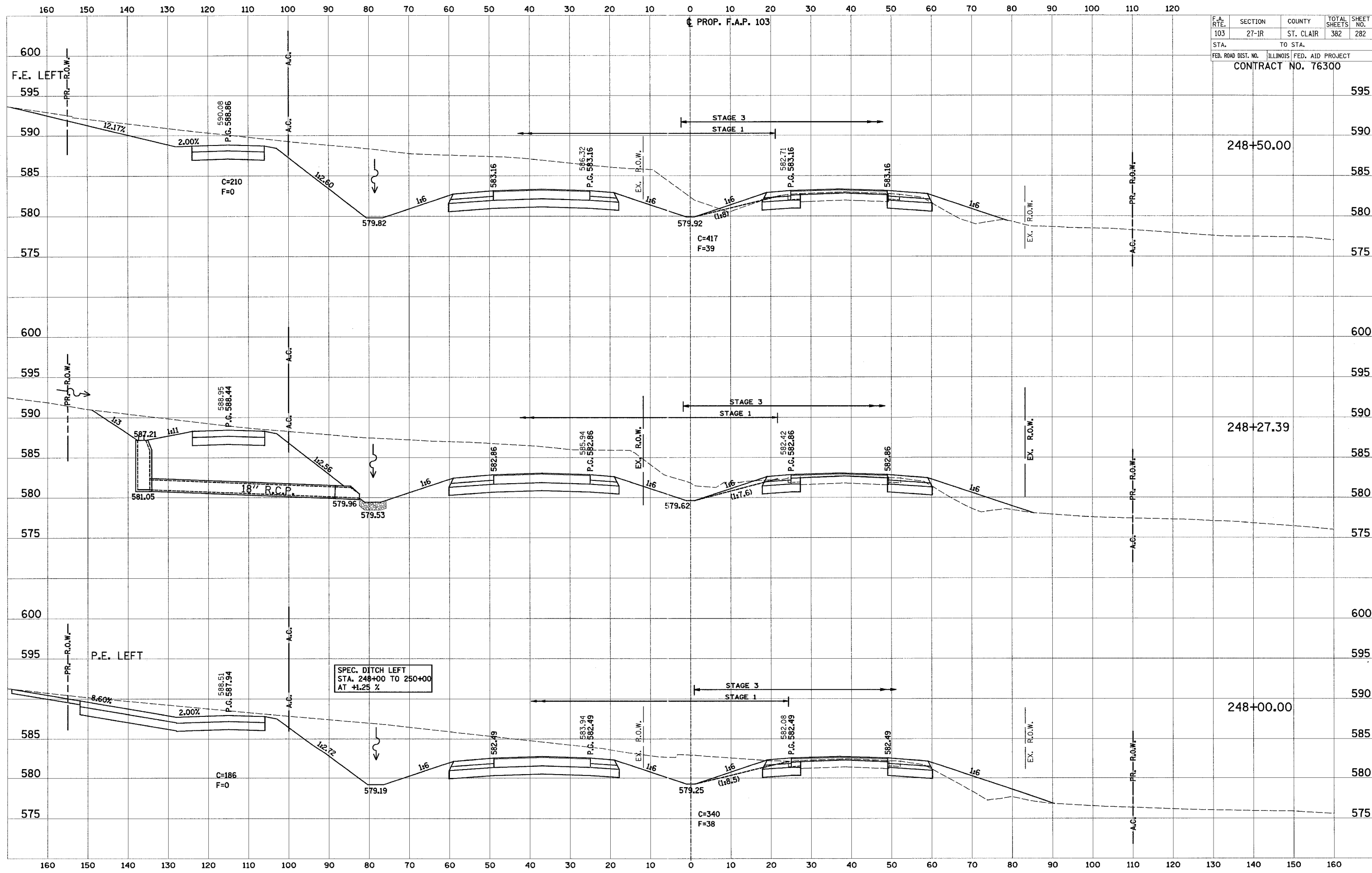
F.A. RTE.	SECTION	COUNTY	TOTAL SHEETS	SHEET NO.
103	27-IR	ST. CLAIR	382	282
STA.		TO STA.		
FED. ROAD DIST. NO.		ILLINOIS FED. AID PROJECT		
CONTRACT NO. 76300				

PROP. F.A.P. 103

FINAL SURVEY
 SURVEYED BY: _____ DATE: _____
 CHECKED BY: _____ DATE: _____
 NOTE BOOK NO. _____
 TEMPLATE AREAS CHECKED

FINAL SURVEY
 SURVEYED BY: _____ DATE: _____
 CHECKED BY: _____ DATE: _____
 NOTE BOOK NO. _____
 TEMPLATE AREAS CHECKED

ORIGINAL SURVEY
 SURVEYED BY: _____ DATE: _____
 CHECKED BY: _____ DATE: _____
 NOTE BOOK NO. _____
 TEMPLATE AREAS CHECKED



SPEC. DITCH LEFT
 STA. 248+00 TO 250+00
 AT 4.25 %

248+50.00

248+27.39

248+00.00

F.E. LEFT

P.E. LEFT

STAGE 3
 STAGE 1

STAGE 3
 STAGE 1

STAGE 3
 STAGE 1

2.00%

C=210
 F=0

C=417
 F=39

18" R.C.P.

2.00%

C=186
 F=0

C=340
 F=38

12.17%

P.G. 588.86

P.G. 588.44

P.G. 587.94

590.08

588.95

588.51

583.16

587.21

587.34

586.32

585.94

583.94

583.16

582.86

582.49

582.71

582.42

582.08

583.16

582.86

582.49

579.82

579.96

579.19

579.92

579.62

579.25

579.92

579.53

579.25

579.92

579.62

579.25

579.92

579.62

579.25

579.92

579.62

579.25

579.92

579.62

579.25

579.92

579.62

579.25

579.92

579.62

579.25

579.92

579.62

579.25

579.92

579.62

579.25

579.92

579.62

579.25

579.92

579.62

579.25

579.92

579.62

579.25

579.92

579.62

579.25

579.92

579.62

579.25

579.92

579.62

579.25

579.92

579.62

579.25

579.92

579.62

579.25

579.92

579.62

579.25

579.92

579.62

579.25

579.92

579.62

579.25

579.92

579.62

579.25

579.92

579.62

579.25

579.92

579.62

579.25

579.92

579.62

579.25

579.92

579.62

579.25

579.92

579.62

579.25

579.92

579.62

579.25

579.92

579.62

579.25

579.92

579.62

579.25

579.92

579.62

579.25

579.92

579.62

579.25