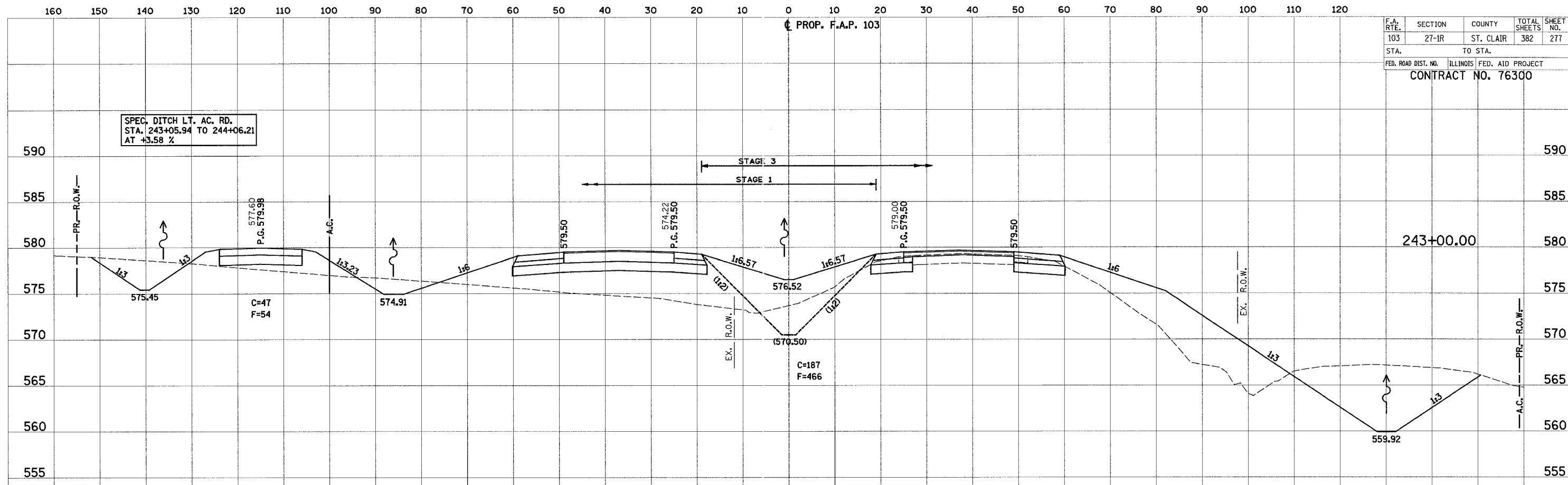


F.A. RTE. 103	SECTION 27-1R	COUNTY ST. CLAIR	TOTAL SHEETS 382	SHEET NO. 277
STA. TO STA.			CONTRACT NO. 76300	
FED. ROAD DIST. NO.		ILLINOIS	FED. AID PROJECT	

PROP. F.A.P. 103

SPEC. DITCH LT. AC. RD.
STA. 243+05.94 TO 244+06.21
AT +3.58 %

DATE	BY
SURVEYED	BY
NOTE BOOK	NO.
AREAS CHECKED	



DATE	BY
SURVEYED	BY
NOTE BOOK	NO.
AREAS CHECKED	

