

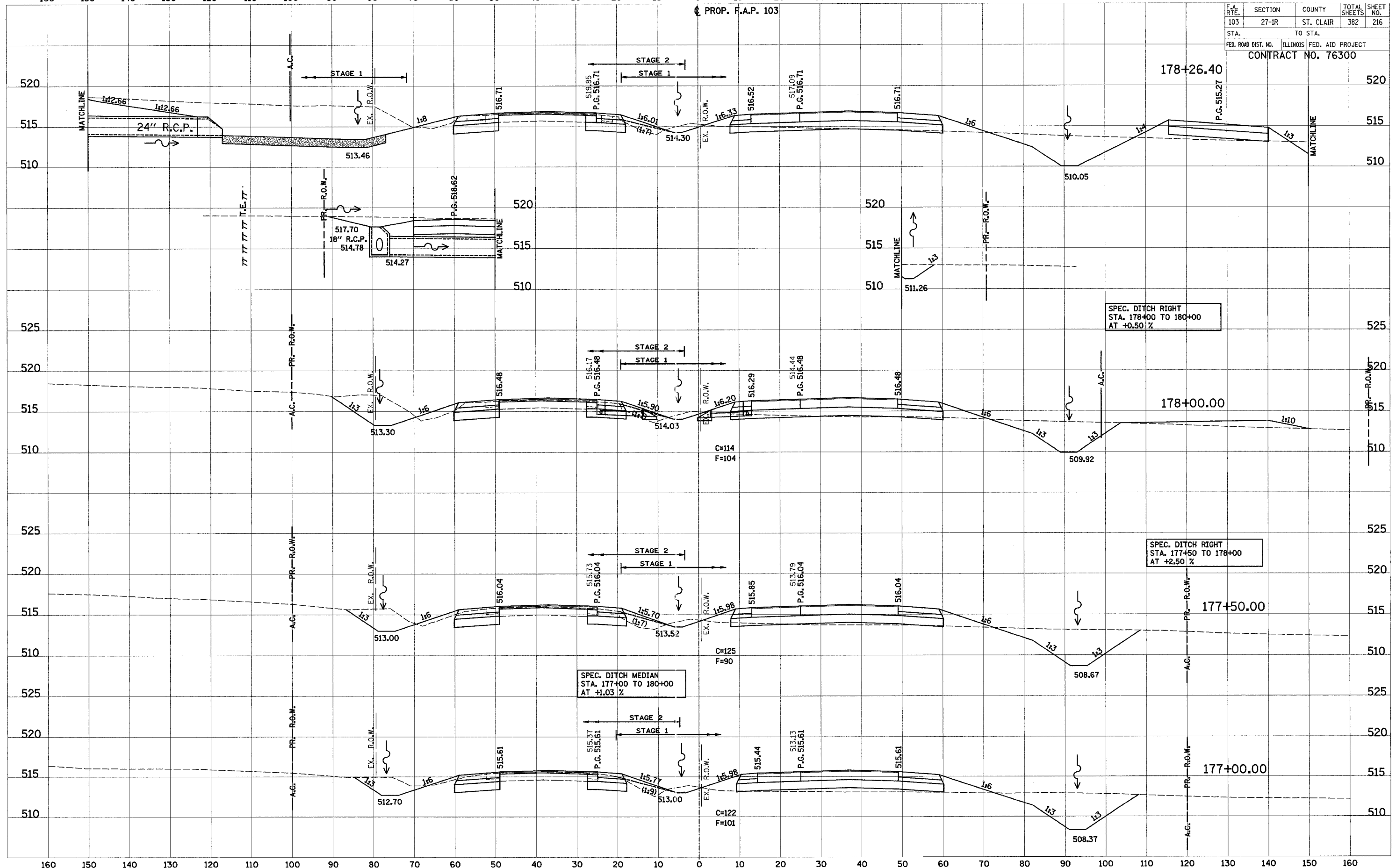
160 150 140 130 120 110 100 90 80 70 60 50 40 30 20 10 0 10 20 30 40 50 60 70 80 90 100 110 120

PROP. F.A.P. 103

F.A. RTE.	SECTION	COUNTY	TOTAL SHEETS	SHEET NO.
103	27-IR	ST. CLAIR	382	216
STA.		TO STA.		
FED. ROAD DIST. NO.		ILLINOIS FED. AID PROJECT		
CONTRACT NO. 76300				

FINAL SURVEY BY DATE
 SURVEYED BY DATE
 TEMPLATE NO. DATE
 AREAS CHECKED

ORIGINAL SURVEY BY DATE
 SURVEYED BY DATE
 TEMPLATE NO. DATE
 AREAS CHECKED



SPEC. DITCH RIGHT
 STA. 178+00 TO 180+00
 AT +0.50 %

SPEC. DITCH RIGHT
 STA. 177+50 TO 178+00
 AT +2.50 %

SPEC. DITCH MEDIAN
 STA. 177+00 TO 180+00
 AT +1.03 %

160 150 140 130 120 110 100 90 80 70 60 50 40 30 20 10 0 10 20 30 40 50 60 70 80 90 100 110 120