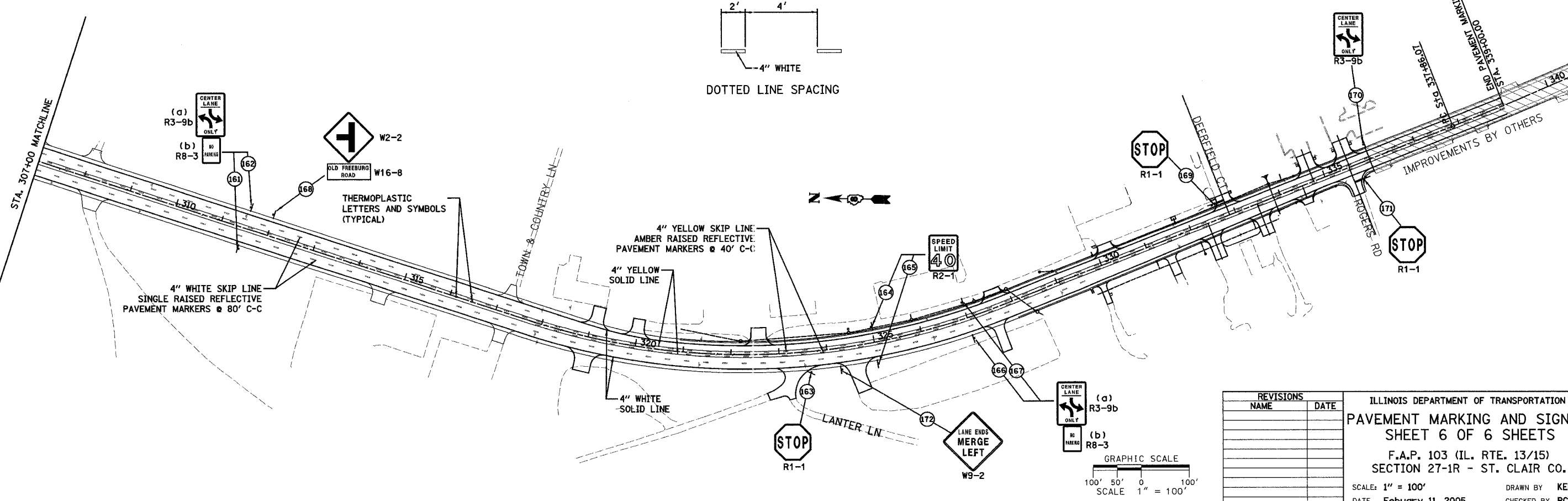
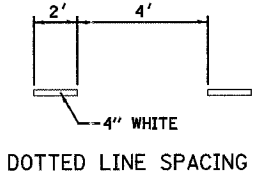
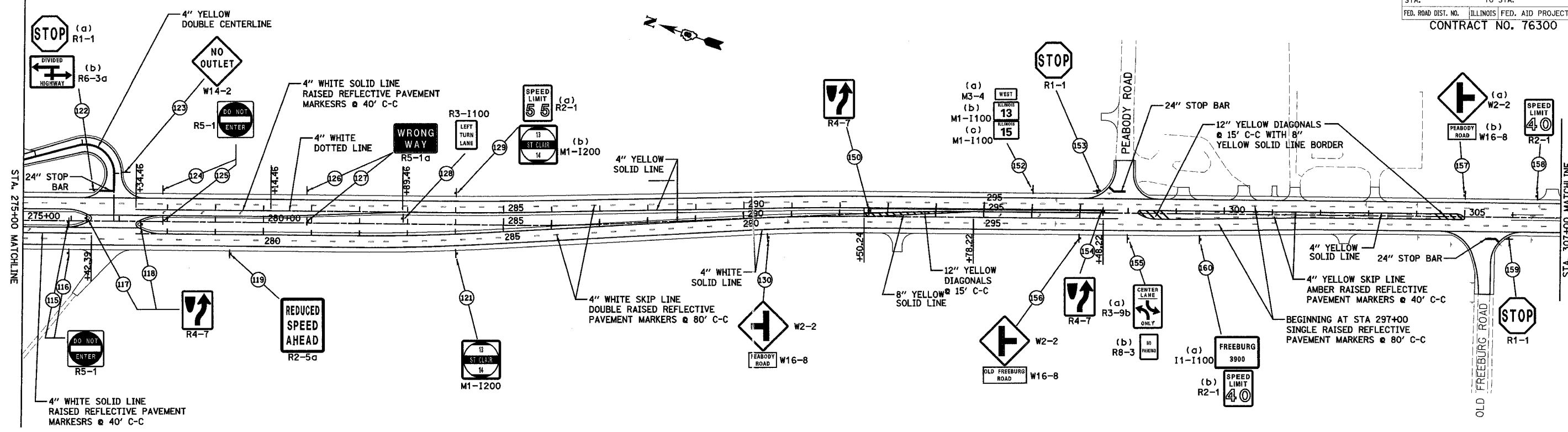
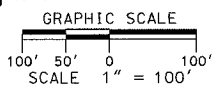


F.A. RTE.	SECTION	COUNTY	TOTAL SHEETS	SHEET NO.
103	27-1R	ST. CLAIR	382	180
STA.		TO STA.		
FED. ROAD DIST. NO.		ILLINOIS FED. AID PROJECT		
CONTRACT NO. 76300				



REVISIONS	NAME	DATE

ILLINOIS DEPARTMENT OF TRANSPORTATION
PAVEMENT MARKING AND SIGNING
SHEET 6 OF 6 SHEETS
 F.A.P. 103 (IL. RTE. 13/15)
 SECTION 27-1R - ST. CLAIR CO.
 SCALE: 1" = 100'
 DATE: February 11, 2005
 DRAWN BY: KEB
 CHECKED BY: RCY



I:\2005\022658\0001\DWG\pavmarking_srt180g_03_3.dwg
 3/10/2005 9:47 AM