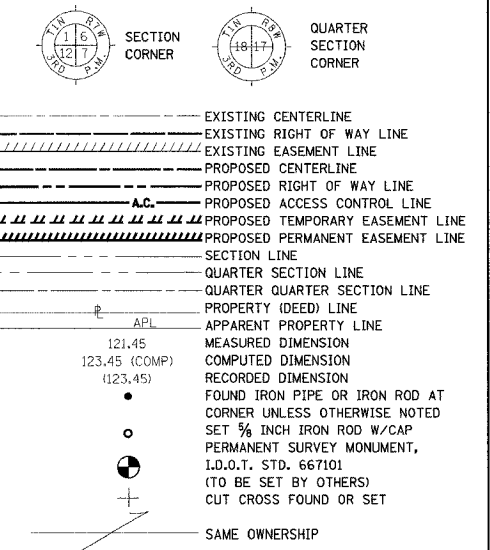


PART OF SE 1/4 OF SECTION 18 IN T1S, R7W OF THE THIRD P.M., ST. CLAIR COUNTY, ILLINOIS

FAP ROUTE	SECTION	COUNTY	TOTAL SHEETS	SHEET NO
103	27-1R	ST. CLAIR	382	157
STA. 307+22.90		TO STA. 317+45.18		
FED. ROAD DIST. NO.	ILLINOIS	FED. AID PROJECT		

LEGEND



- ▲ SET CONCRETE SURVEY CONTROL MONUMENT
- STAKING OF PROPOSED RIGHT OF WAY. SET 5/8 INCH METAL ROD WITH DIVISION OF HIGHWAY SURVEY MARKER TO MONUMENT THE POSITION SHOWN, IDENTIFIED BY INSCRIPTION DATA AND SURVEYORS REGISTRATION NUMBER.
- STAKING OF PROPOSED RIGHT OF WAY IN CULTIVATED AREAS. SET 5/8 INCH METAL ROD WITH DIVISION OF HIGHWAY SURVEY MARKER 20 INCHES BELOW GROUND SURFACE TO MONUMENT THE POSITION SHOWN, IDENTIFIED BY INSCRIPTION DATA AND SURVEYORS REGISTRATION NUMBER.

STATE OF ILLINOIS)
 COUNTY OF) SS

THIS IS TO CERTIFY THAT I, RONALD G. BRIGHT AN ILLINOIS PROFESSIONAL LAND SURVEYOR, SURVEYED THE PLAT OF HIGHWAYS SHOWN HEREON IN U.S. SURVEYS NO. 382, 389, AND 772 AND IN SECTIONS 6, 7, 18, 19, 20, 29, AND 30, TOWNSHIP 1 SOUTH, RANGE 7 WEST, OF THE THIRD PRINCIPAL MERIDIAN, ST. CLAIR COUNTY, ILLINOIS, THAT THE SURVEY IS COMPLETE AS SHOWN TO THE BEST OF MY KNOWLEDGE AND BELIEF, THAT THE PLAT REPRESENTS SAID SURVEY, THAT ALL MONUMENTS FOUND AND ESTABLISHED ARE OF PERMANENT QUALITY AND OCCUPY THE POSITIONS SHOWN THEREON AND THAT THE MONUMENTS ARE SUFFICIENT TO ENABLE THE SURVEY TO BE RETRACED. MADE FOR THE DEPARTMENT OF TRANSPORTATION, STATE OF ILLINOIS.

DATED _____

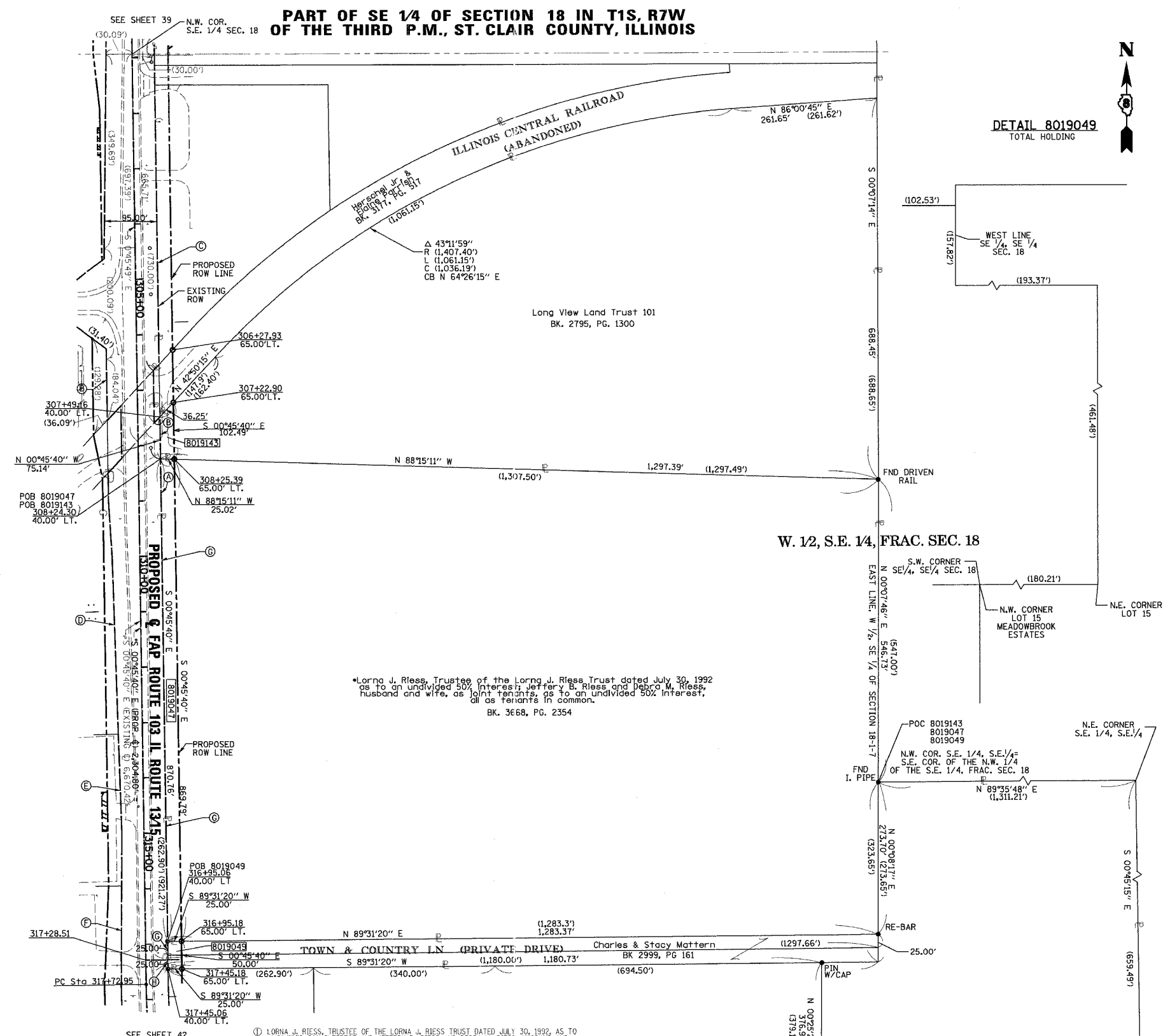
RONALD G. BRIGHT, PLS #3157
 EXPIRES NOVEMBER 30, 2006

Kuhlmann Design Group, Inc.
 15 E. WASHINGTON STREET
 BELLEVILLE, ILLINOIS 62220
 (618) 234-8898

ILLINOIS DEPARTMENT OF TRANSPORTATION
PLAT OF HIGHWAYS
 FAP ROUTE 103 (IL RTE. 13/15)
 SECTION 27-1R
 ST. CLAIR COUNTY
 JOB NO. R-98-019-00
 STATION 307+22.90 TO STATION 317+45.18

SCALE: 1" = 100'

ILLINOIS DEPARTMENT OF TRANSPORTATION
 DIVISION OF HIGHWAYS/DISTRICT 8
 1102 EASTPORT PLAZA DRIVE
 COLLINSVILLE, ILLINOIS 62234-6198



PROP. CURVE 7
 PI STA. = 322+94.62
 Δ = 39° 37' 19" (LT)
 D = 3° 57' 23"
 R = 1,448.14'
 T = 521.68'
 L = 1,001.44'
 E = 91.10'
 P.C. STA. = 317+72.95
 P.T. STA. = 327+74.39
 CH. BRG = S 20°34'19" E
 CH. = 981.60'

EXIST. CURVE 3
 PI STA. = 322+94.63
 Δ = 39° 37' 19" (LT)
 D = 3° 57' 23"
 R = 1,448.14'
 T = 521.68'
 L = 1,001.44'
 E = 91.10'
 P.C. STA. = 317+72.95
 P.T. STA. = 327+74.39
 CH. BRG = S 20°34'19" E
 CH. = 981.60'

FAP ROUTE 103 (IL. RT. 13/15)	EXISTING RIGHT-OF-WAY SCHEDULE	DOCUMENT
(A)	BK. 2775, PG. 1248/A990609	
(B)	BK. 2770, PG. 2228	
(C)	BK. 2761, PG. 2232	
(D)	CONDEM. CASE NO. 89-ED-10	
(E)	CONDEM. CASE NO. 89-ED-9	
(F)	BK. 2767, PG. 1671	
(G)	BK. 2750, PG. 2340/A985216	
(H)	BK. 2997, PG. 279/A01008225	

COORDINATE TABLE				
STATION	OFFSET	NORTH	EAST	
307+22.90	65.00' LT.	647282.0291	2367924.4113	PROP. ROW
307+49.16	40.00' LT.	647255.4454	2367899.7622	EXIST. ROW
308+24.30	40.00' LT.	647180.3109	2367900.7603	EXIST. ROW
308+25.39	65.00' LT.	647179.5480	2367925.7727	PROP. ROW
316+95.06	40.00' LT.	646309.6262	2367912.3264	EXIST. ROW
316+95.18	65.00' LT.	646309.8347	2367937.3260	PROP. ROW
317+45.06	40.00' LT.	646259.6300	2367912.9900	EXIST. ROW
317+45.18	65.00' LT.	646259.8395	2367937.9901	PROP. ROW
317+72.95	0.00'	646231.2144	2367873.3650	P.C.

PARCEL NO.	OWNER	BOOK & PAGE	TOTAL HOLDING ACRES	FEE SIMPLE ACQUISITION				REMAINDER		EASEMENTS		PERMANENT TAX NUMBER	PROPERTY ACQUIRED BY	
				GROSS ACRES	SO. FT.	PREVIOUSLY DEDICATED ACRES	SO. FT.	NET ACRES	SO. FT.	ACRES	SO. FT.			PE = PERMANENT TE = TEMPORARY
8019143	LONG VIEW LAND TRUST 101, DATED THE 23RD DAY OF JANUARY, 1984 TITLE REPORT NO. SC-2854J1	BK 2795 PG 1300	15.0497 ACRES	0.0510	2,220	N/A	N/A	0.0510	2,220	14.9987 ACRES	N/A	N/A	N/A	14-16-0-400-026
8019047	LORNA J. RIESS REPORT NO. SC-2854J6	BK 3668 PG 2354	25.0380 ACRES	0.4995	21,757	N/A	N/A	0.4995	21,757	24.5385 ACRES	N/A	N/A	N/A	14-18-0-400-042
8019049	CHARLES MATTERN AND STACY MATTERN, HUSBAND AND WIFE AS JOINT TENANTS TITLE REPORT NO. SC-2854J5	BK 2999 PG 161	22.5450 ACRES	0.0287	1,250	N/A	N/A	0.0287	1,250	22.5163 ACRES	N/A	N/A	N/A	14-13-0-400-046

NOTES
 1. BEARINGS AND COORDINATES SHOWN HEREON ARE BASED ON SURVEY CONTROL DATA PROVIDED BY THE IL. DEPARTMENT OF TRANSPORTATION.
 2. TOPOGRAPHY AS SHOWN SUPPLIED BY IL. DEPARTMENT OF TRANSPORTATION, DISTRICT 8 COLLINSVILLE, IL.