

**PART OF THE FRACTIONAL  
SW 1/4 OF SECTION 7 IN T1S,  
R7W OF THE THIRD P.M.,  
ST. CLAIR COUNTY, ILLINOIS**

FAP ROUTE	SECTION	COUNTY	TOTAL SHEETS	SHEET NO.
103	27-1R	ST. CLAIR	382	152
STA. 254+25.81		TO STA. 262+88.59		
FED. ROAD DIST. NO.		ILLINOIS	FED. AID PROJECT	

**LEGEND**

- QUARTER SECTION CORNER
- SECTION CORNER
- EXISTING CENTERLINE
- EXISTING RIGHT OF WAY LINE
- EXISTING EASEMENT LINE
- PROPOSED CENTERLINE
- PROPOSED RIGHT OF WAY LINE
- PROPOSED ACCESS CONTROL LINE
- PROPOSED TEMPORARY EASEMENT LINE
- PROPOSED PERMANENT EASEMENT LINE
- SECTION LINE
- QUARTER SECTION LINE
- QUARTER QUARTER SECTION LINE
- PROPERTY (DEED) LINE
- APPARENT PROPERTY LINE
- MEASURED DIMENSION
- COMPUTED DIMENSION
- RECORDED DIMENSION
- FOUND IRON PIPE OR IRON ROD AT CORNER UNLESS OTHERWISE NOTED
- SET 5/8 INCH IRON ROD W/CAP
- PERMANENT SURVEY MONUMENT, I.D.O.T. STD. 667101 (TO BE SET BY OTHERS)
- CUT CROSS FOUND OR SET
- SAME OWNERSHIP

- SET CONCRETE SURVEY CONTROL MONUMENT
- STAKING OF PROPOSED RIGHT OF WAY. SET 5/8 INCH METAL ROD WITH DIVISION OF HIGHWAY SURVEY MARKER TO MONUMENT THE POSITION SHOWN, IDENTIFIED BY INSCRIPTION DATA AND SURVEYORS REGISTRATION NUMBER.
- STAKING OF PROPOSED RIGHT OF WAY IN CULTIVATED AREAS. SET 5/8 INCH METAL ROD WITH DIVISION OF HIGHWAY SURVEY MARKER 20 INCHES BELOW GROUND SURFACE TO MONUMENT THE POSITION SHOWN, IDENTIFIED BY INSCRIPTION DATA AND SURVEYORS REGISTRATION NUMBER.

STATE OF ILLINOIS )  
COUNTY OF ) SS

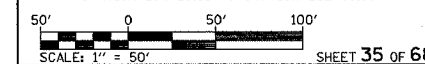
THIS IS TO CERTIFY THAT I, RONALD G. BRIGHT AN ILLINOIS PROFESSIONAL LAND SURVEYOR, SURVEYED THE PLAT OF HIGHWAYS SHOWN HEREON IN U.S. SURVEYS NO. 382, 389, AND 772 AND IN SECTIONS 6, 7, 18, 19, 20, 29 AND 30, TOWNSHIP 1 SOUTH, RANGE 7 WEST, OF THE THIRD PRINCIPAL MERIDIAN, ST. CLAIR COUNTY, ILLINOIS, THAT THE SURVEY IS COMPLETE AS SHOWN TO THE BEST OF MY KNOWLEDGE AND BELIEF, THAT THE PLAT REPRESENTS SAID SURVEY, THAT ALL MONUMENTS FOUND AND ESTABLISHED ARE OF PERMANENT QUALITY AND OCCUPY THE POSITIONS SHOWN THEREON AND THAT THE MONUMENTS ARE SUFFICIENT TO ENABLE THE SURVEY TO BE RETRACED. MADE FOR THE DEPARTMENT OF TRANSPORTATION, STATE OF ILLINOIS.

DATED \_\_\_\_\_

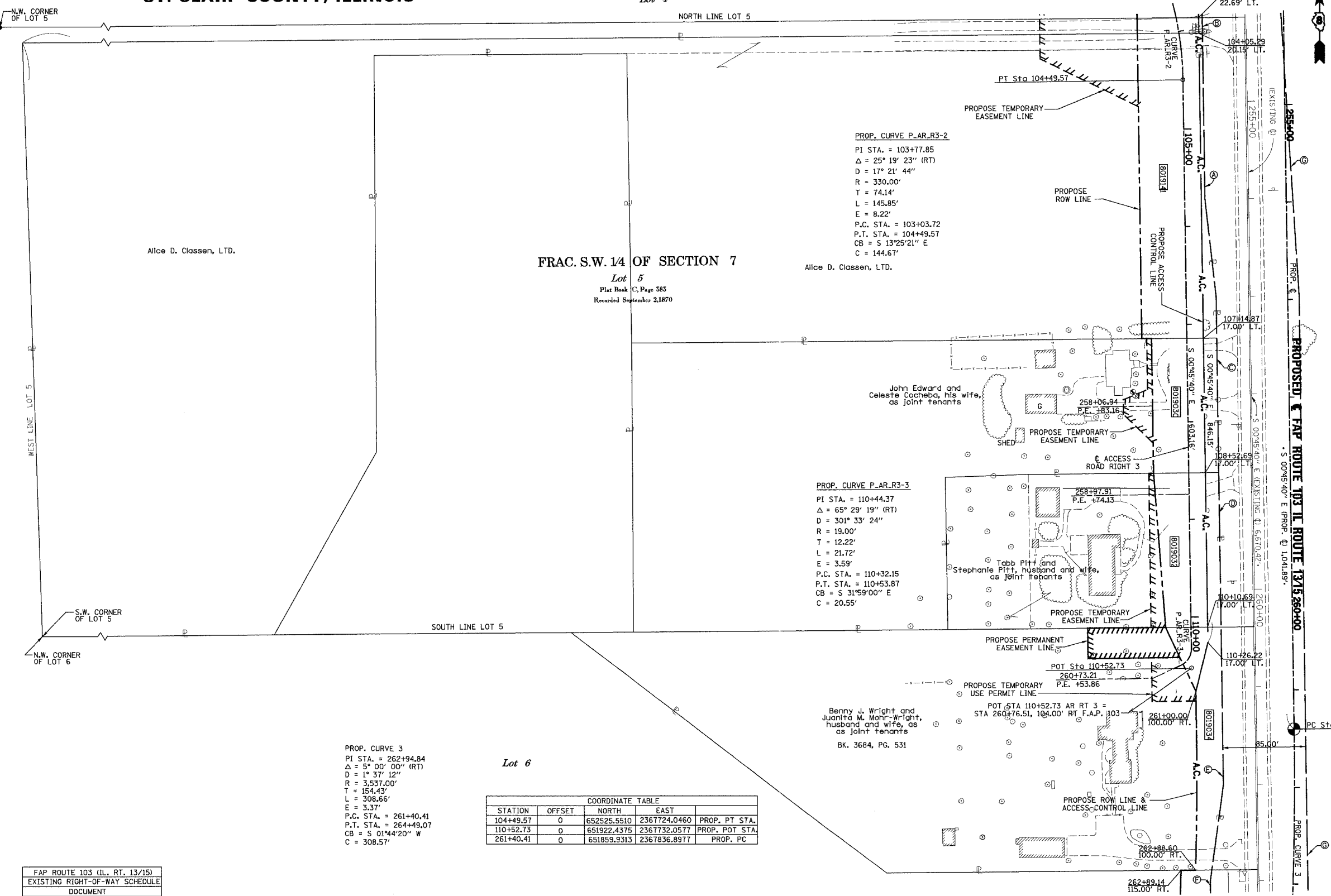
RONALD G. BRIGHT, PLS #3157  
EXPIRES NOVEMBER 30, 2006

**KdG** KUHLMANN DESIGN GROUP, INC.  
15 E. WASHINGTON STREET  
BELLEVILLE, ILLINOIS 62220  
(618) 234-8898

ILLINOIS DEPARTMENT OF TRANSPORTATION  
**PLAT OF HIGHWAYS**  
FAP ROUTE 103 (IL RTE. 13/15)  
SECTION 27-1R  
ST. CLAIR COUNTY  
JOB NO. R-98-019-00  
STATION 254+25.81 TO STATION 262+88.59



ILLINOIS DEPARTMENT OF TRANSPORTATION  
DIVISION OF HIGHWAYS/DISTRICT 8  
1102 EASTPORT PLAZA DRIVE  
COLLINGSVILLE, ILLINOIS 62234-6198



**PROP. CURVE P-AR-R3-2**  
PI STA. = 103+77.85  
 $\Delta = 25^\circ 19' 23''$  (RT)  
D = 17° 21' 44"  
R = 330.00'  
T = 74.14'  
L = 145.85'  
E = 8.22'  
P.C. STA. = 103+03.72  
P.T. STA. = 104+49.57  
CB = S 13°25'21" E  
C = 144.67'

**PROP. CURVE P-AR-R3-3**  
PI STA. = 110+44.37  
 $\Delta = 65^\circ 29' 19''$  (RT)  
D = 301° 33' 24"  
R = 19.00'  
T = 12.22'  
L = 21.72'  
E = 3.59'  
P.C. STA. = 110+32.15  
P.T. STA. = 110+53.87  
CB = S 31°59'00" E  
C = 20.55'

**PROP. CURVE 3**  
PI STA. = 262+94.84  
 $\Delta = 5^\circ 00' 00''$  (RT)  
D = 1° 37' 12"  
R = 3,537.00'  
T = 154.43'  
L = 308.66'  
E = 3.37'  
P.C. STA. = 261+40.41  
P.T. STA. = 264+49.07  
CB = S 01°44'20" W  
C = 308.57'

STATION	OFFSET	COORDINATE TABLE		
		NORTH	EAST	
104+49.57	0	652525.5510	2367724.0460	PROP. PT STA.
110+52.73	0	651922.4375	2367732.0577	PROP. POT STA
261+40.41	0	651859.9313	2367836.8977	PROP. PC

FAP ROUTE 103 (IL. RT. 13/15) EXISTING RIGHT-OF-WAY SCHEDULE DOCUMENT	
(A)	BK. 2775, PG. 318
(B)	BK. 2750, PG. 809
(C)	BK. 2754, PG. 672
(D)	BK. 2754, PG. 676
(E)	BK. 2755, PG. 28
(F)	BK. 3005, PG. 1612
(G)	BK. 3005, PG. 1589

- NOTES:**
- BEARINGS AND COORDINATES SHOWN HEREON ARE BASED ON SURVEY CONTROL DATA PROVIDED BY THE ILL. DEPARTMENT OF TRANSPORTATION.
  - TOPOGRAPHY AS SHOWN SUPPLIED BY ILL. DEPARTMENT OF TRANSPORTATION, DISTRICT 8 COLLINGSVILLE, IL.
  - MRBK = MONUMENT AND RECORD BOOK.