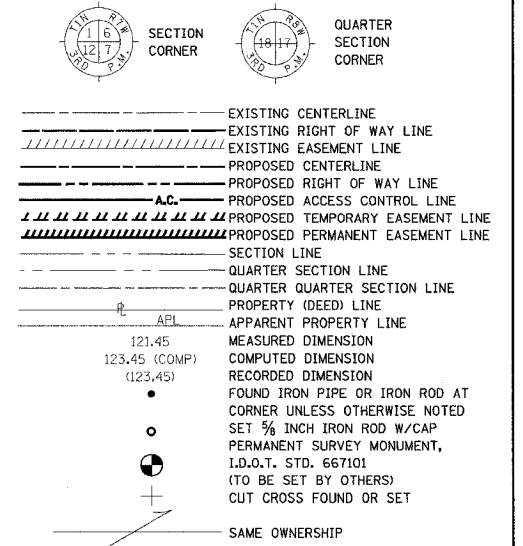


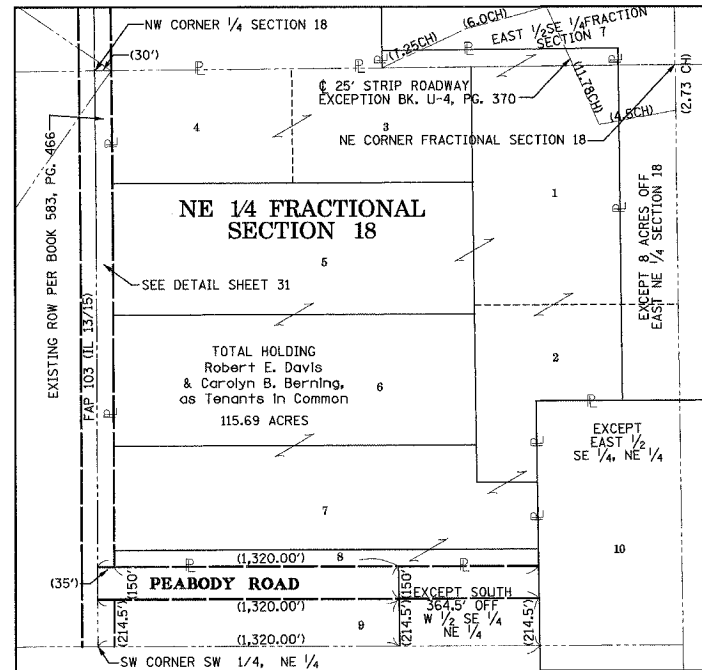
**PART OF W 1/2 OF THE  
NE 1/4 OF FRACTIONAL SECTION 18 IN T1S, R7W  
OF THE THIRD P.M., ST. CLAIR COUNTY, ILLINOIS**

SECTION	COUNTY	TOTAL SHEETS	SHEET NO.
103	ST. CLAIR	382	150

**LEGEND**



**EAST 1/2  
SE 1/4, NE 1/4**



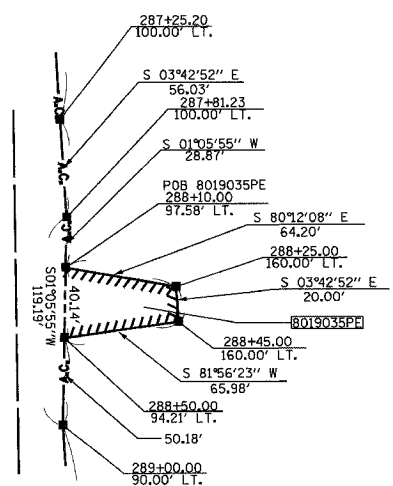
**NE 1/4 FRACTIONAL  
SECTION 18**

Robert E. Davis  
& Carolyn B. Berning,  
as Tenants In Common  
BK 3404, Pg 1845

**POINT OF DIRECT ACCESS - REFER TO NOTE A OR B**

**NOTE A:**  
THE EXISTING DIRECT ACCESS ENTRANCE AT THE DESIGNATED STATION SHOWN HEREON SHALL REMAIN IN EFFECT AND OPERATION ONLY AS LONG AS THE ENTRANCE IS USED FOR FARMING PURPOSES FOR ONE OR MORE SINGLE FAMILY RESIDENCES, AND AS LONG AS THE ENTRANCE IS NOT USED FOR ACCESS TO A COMMERCIAL ENTERPRISE OTHER THAN FARMING.

**NOTE B:**  
A PROPOSED DIRECT ACCESS ENTRANCE SHALL BE PROVIDED AT THE DESIGNATED STATION SHOWN HEREON, THE ENTRANCE SHALL REMAIN IN EFFECT AND OPERATION ONLY AS LONG AS THE ENTRANCE IS USED FOR FARMING PURPOSES FOR ONE OR MORE SINGLE FAMILY RESIDENCES, AND AS LONG AS THE ENTRANCE IS NOT USED FOR ACCESS TO A COMMERCIAL ENTERPRISE OTHER THAN FARMING.



**DETAIL A  
NOT TO SCALE**

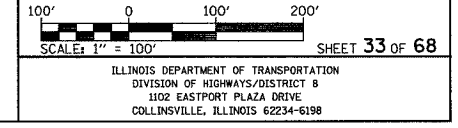
STATION		OFFSET	NORTH	EAST	PROP. PC STA.
285+30.24	0		649472.2272	2367792.1323	PROP. PC STA.
285+30.24	100.00'	LT.	649473.5428	2367892.1236	PROP. ROW
287+25.20	0		649277.4432	2367799.7311	PROP. PT STA.
287+25.20	100.00'	LT.	649283.9214	2367899.5211	PROP. ROW
287+81.23	100.00'	LT.	649228.0058	2367903.1510	PROP. ROW
288+25.00	160.00'	LT.	649199.1411	2367902.5975	PROP. PE
288+25.00	160.00'	LT.	649188.2163	2367965.8604	PROP. PE
288+45.00	160.00'	LT.	649168.2583	2367967.1560	PROP. PE
288+50.00	94.21'	LT.	649159.0070	2367901.8280	PROP. PE
289+00.00	90.00'	LT.	649108.8391	2367900.8660	PROP. ROW
291+00.00	90.00'	LT.	648909.2592	2367913.8224	PROP. ROW
292+69.61	0		648734.1783	2367834.9989	PROP. PC STA.
294+68.15	70.00'	LT.	648536.7338	2367912.7442	PROP. ROW
294+68.15	0		648535.8040	2367842.7504	PROP. PT STA.
297+29.83	40.00'	LT.	648274.6877	2367886.2226	EXIST. ROW
297+30.19	70.00'	LT.	648274.7195	2367916.2248	PROP. ROW

**NOTES:**

- BEARINGS AND COORDINATES SHOWN ARE BASED ON SURVEY CONTROL DATA PROVIDED BY THE ILL. DEPARTMENT OF TRANSPORTATION.
- TOPOGRAPHY AS SHOWN SUPPLIED BY ILL. DEPARTMENT OF TRANSPORTATION, DISTRICT 8 COLLINSVILLE, IL.

**KdG**  
KUHLMANN DESIGN GROUP, INC.  
15 E. WASHINGTON STREET  
BELLEVILLE, ILLINOIS 62220  
(618) 234-8898

**ILLINOIS DEPARTMENT OF TRANSPORTATION  
PLAT OF HIGHWAYS  
FAP ROUTE 103 (IL RTE. 13/15)  
SECTION 27-1R  
ST. CLAIR COUNTY  
JOB NO. R-98-019-00  
STATION 285+30.24 TO STATION 297+30.21**



**PROP. CURVE 5**  
PI STA. = 286+27.74  
 $\Delta = 2^\circ 57' 38''$  (LT)  
D = 1° 31' 07"  
R = 3,773.00'  
T = 97.50'  
L = 194.95'  
E = 1.26'  
P.C. STA. = 285+30.24  
P.T. STA. = 287+25.20  
CH. BRG = S 02°14'03" E  
CH. = 194.93'

**PROP. CURVE 6**  
PI STA. = 293+68.90  
 $\Delta = 2^\circ 57' 12''$  (RT)  
D = 1° 29' 15"  
R = 3,852.00'  
T = 99.30'  
L = 198.55'  
E = 1.28'  
P.C. STA. = 292+69.61  
P.T. STA. = 294+68.15  
CH. BRG = S 02°14'16" E  
CH. = 198.53'

3/2/2006 6:16:38 PM j:\20202020150001\dwg\plm1\_103\_33.dgn

PARCEL NO.	OWNER	BOOK & PAGE	TOTAL HOLDING ACRES	FEE SIMPLE ACQUISITION				REMAINDER ACRES	EASEMENTS		PERMANENT TAX NUMBER	PROPERTY ACQUIRED BY			
				GRASS ACRES	PREVIOUSLY DEDICATED ACRES	NET ACRES	SO. FT.		PERMANENT TE = PERMANENT ACRES	EASEMENT PURPOSE					
8019035	ROBERT E. DAVIS & CAROLYN B. BERNING, AS TENANTS IN COMMON TITLE REPORT NO. 36-2841	BK 3404 PG 1845	115.6868	A-1.9932	A-86,822	B-1.6991	B-74,014	A-1.9932	A-86,822	111.9645	TE 0.0072 PE 0.0443	TE 3/3 PE 1,932	GRADING & ENTRANCE CONSTRUCTION, GRADING, DRAINAGE AND MAINTENANCE	14-18-0-700-001	