

PART OF THE N.E. 1/4 OF SECTION 7, T1S, R7W OF THE THIRD P.M., ST. CLAIR COUNTY, ILLINOIS

SECTION	COUNTY	TOTAL SHEETS	SHEET NO.
27-1R	ST. CLAIR	382	140
STA. 226+38.89 TO STA. 234+16.01			
FED. ROAD DIST. NO.		ILLINOIS	FED. AID PROJECT



LEGEND

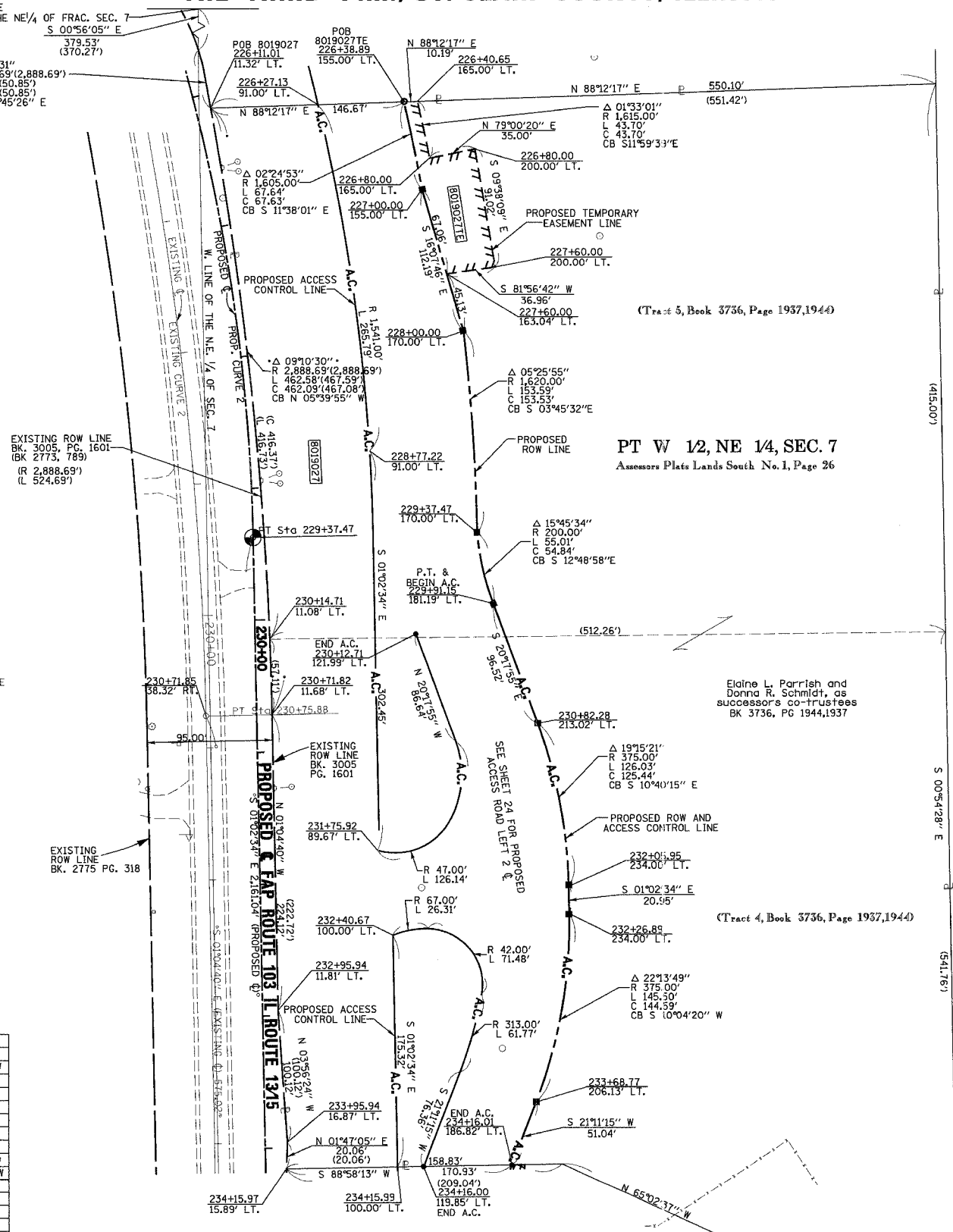
SECTION CORNER
QUARTER SECTION CORNER

EXISTING CENTERLINE
EXISTING RIGHT OF WAY LINE
EXISTING EASEMENT LINE
PROPOSED CENTERLINE
PROPOSED RIGHT OF WAY LINE
PROPOSED ACCESS CONTROL LINE
PROPOSED TEMPORARY EASEMENT LINE
PROPOSED PERMANENT EASEMENT LINE
SECTION LINE
QUARTER SECTION LINE
QUARTER QUARTER SECTION LINE
PROPERTY (DEED) LINE
APL APPARENT PROPERTY LINE
MEASURED DIMENSION
121.45
123.45 (COMP)
RECORDED DIMENSION
FOUND IRON PIPE OR IRON ROD AT CORNER UNLESS OTHERWISE NOTED
SET 5/8 INCH IRON ROD W/CAP
PERMANENT SURVEY MONUMENT, I.D.O.T. STD. 667101 (TO BE SET BY OTHERS)
CUT CROSS FOUND OR SET
SAME OWNERSHIP

▲ SET CONCRETE SURVEY CONTROL MONUMENT
■ STAKING OF PROPOSED RIGHT OF WAY. SET 5/8 INCH METAL ROD WITH DIVISION OF HIGHWAY SURVEY MARKER TO MONUMENT THE POSITION SHOWN. IDENTIFIED BY INSCRIPTION DATA AND SURVEYORS REGISTRATION NUMBER.
■ M STAKING OF PROPOSED RIGHT OF WAY IN CULTIVATED AREAS. SET 5/8 INCH METAL ROD WITH DIVISION OF HIGHWAY SURVEY MARKER 20 INCHES BELOW GROUND SURFACE TO MONUMENT THE POSITION SHOWN. IDENTIFIED BY INSCRIPTION DATA AND SURVEYORS REGISTRATION NUMBER.

PROP. CURVE 2
PI STA. = 226+25.75
Δ = 25°02'23" (RT)
D = 3°57'05"
R = 1,450.00
T = 322.01'
L = 633.73'
E = 35.32'
P.C. STA. = 223+03.74
P.T. STA. = 229+37.47
CH. BRG. = S 13°33'48" E
CH. = 628.70'

EXIST. CURVE 2
PI STA. = 224+66.44
Δ = 25° 00' 23" (RT)
D = 2° 01' 06"
R = 2,838.69'
T = 629.49'
L = 1,238.93'
E = 68.96'
P.C. STA. = 218+36.95
P.T. STA. = 230+75.88
CH. BRG. = S 13°34'51" E
CH. = 1,229.12'



COORDINATE TABLE

STATION	OFFSET	NORTH	EAST	EXIST. ROW
226+11.01	11.32' LT.	655388.1351	2367752.2344	EXIST. ROW
226+38.89	155.00' LT.	655392.7300	2367898.8317	PROP. ROW
227+00.00	155.00' LT.	655326.4848	2367912.4703	PROP. ROW
228+00.00	170.00' LT.	655218.7101	2367943.6379	PROP. ROW
229+37.47	170.00' LT.	655065.5094	2367953.7027	PROP. ROW
229+37.47	0	655062.4158	2367783.7309	PROP. PT
229+91.15	181.19' LT.	655012.0384	2367965.8669	PROP. ROW
230+14.71	11.08' LT.	654985.3880	2367796.2120	EXIST. ROW
230+71.82	11.68' LT.	654928.3027	2367797.8505	EXIST. ROW
230+75.88	0	654927.36	2367747.86	EXIST. PT
230+82.28	213.02' LT.	654921.5104	2367999.3518	PROP. ROW
232+05.95	234.00' LT.	654798.2426	2368022.5784	PROP. ROW
232+26.89	234.00' LT.	654777.2985	2368022.9596	PROP. ROW
232+95.94	11.81' LT.	654704.2189	2367802.0659	EXIST. ROW
233+68.77	206.13' LT.	654634.9411	2367997.6730	PROP. ROW
233+95.94	16.87' LT.	654604.3307	2367808.9459	EXIST. ROW
234+15.97	15.89' LT.	654584.2804	2367808.3212	EXIST. ROW
234+16.01	186.82' LT.	654587.3523	2367979.2265	END A.C.

PARCEL NO.	OWNER	BOOK & PAGE	TOTAL HOLDING ACRES	FEE SIMPLE ACQUISITION				EASEMENTS		PERMANENT TAX NUMBER	PROPERTY ACQUIRED BY			
				CROSS ACRES	SO. FT.	PREVIOUSLY DEDICATED ACRES	NET ACRES	REMAINDER ACRES	PE = PERMANENT TE = TEMPORARY			EASEMENT PURPOSE		
8019027	ELAINE L. PARRISH AND DONNA R. SCHMIDT, AS SUCCESSOR CO-TRUSTEES TITLE REPORT NO. SC-2838	BK 3736 PG 1944, 1937	10.1202 ACRES	3.3877	147,567	N/A	N/A	3.3877	147,567	6.7325 ACRES	TE 0.0964 TE 4.200	GRADING & ENTRANCE CONSTRUCTION	14-07-0-200-011 14-07-0-200-010	

KDL KUHLMANN DESIGN GROUP, INC.
15 E. WASHINGTON STREET
BELLEVILLE, ILLINOIS 62220
(618) 234-8898

ILLINOIS DEPARTMENT OF TRANSPORTATION
PLAT OF HIGHWAYS
FAP ROUTE 103 (IL RTE. 13/15)
SECTION 27-1R
ST. CLAIR COUNTY
JOB NO. R-98-019-00
STATION 226+38.89 TO STATION 234+16.01

SCALE: 1" = 50'

ILLINOIS DEPARTMENT OF TRANSPORTATION
DIVISION OF HIGHWAYS/DISTRICT 8
1102 EASTPORT PLAZA DRIVE
COLLINGSVILLE, ILLINOIS 62234-6198

SEE SHEET 24 FOR ACCESS CONTROL BASELINE INFORMATION

NOTES:
1. BEARINGS AND COORDINATES SHOWN HEREON ARE BASED ON SURVEY CONTROL DATA PROVIDED BY THE IL DEPARTMENT OF TRANSPORTATION.
2. TOPOGRAPHY AS SHOWN SUPPLIED BY IL DEPARTMENT OF TRANSPORTATION, DISTRICT 8 COLLINGSVILLE, IL.
3. MRBK = MONUMENT AND RECORD BOOK.