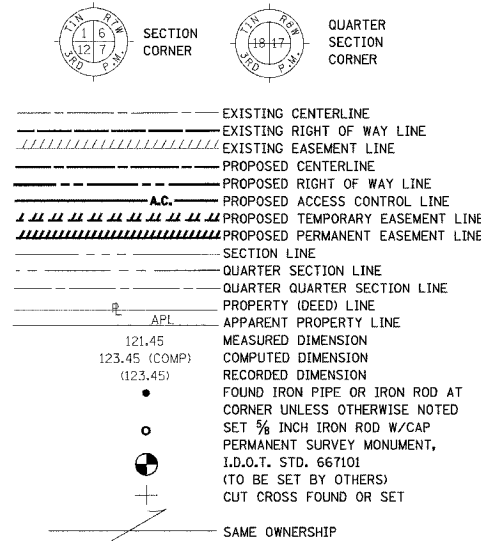


PART OF U.S. SURVEY 389, T1N, R7W, T1S, R7W, T1S, R8W & T1N, R8W OF THE THIRD P.M., ST. CLAIR COUNTY, ILLINOIS

DIST. NO.	SECTION	COUNTY	TOTAL SHEETS	SHEET NO.
103	27-1R	ST. CLAIR	382	119
STA. 147+50.00		TO STA. 170+54.19		
FED. ROAD DIST. NO.		ILLINOIS	FED. AID PROJECT	

STATION	OFFSET	COORDINATE TABLE		
		NORTH	EAST	
147+50.00	0	659448.7926	2361711.7456	PROJECT START
148+36.88	47.86' LT.	659471.2270	2361808.3648	US SURVEY 389
148+37.61	0	659425.2257	2361796.1222	@SURVEY LINE
148+44.47	2,152.43' LT.	657351.7970	2361217.3010	US SURVEY 382
148+51.65	0	659421.1480	2361809.5684	@GREEN MNT. &
148+51.87	0	659421.0890	2361809.7770	POT
148+51.87	39.38' LT.	659458.9902	2361820.4776	ALUM. DISK
149+37.05	149.38' LT.	659541.6590	2361932.3930	EXIST. ROW
162+36.94	114.41' LT.	659154.3020	2363173.7170	EXIST. ROW
162+28.64	114.65' LT.	659156.7708	2363165.8056	PROP. ROW
162+80.00	164.62' LT.	659190.8955	2363228.8128	PROP. ROW
162+80.00	350.00' LT.	659369.2845	2363279.2564	PROP. ROW
163+20.00	0	659021.6065	2363222.5110	←
163+60.00	350.00' LT.	659347.5162	2363356.2378	PROP. ROW
163+60.00	150.00' LT.	659155.0615	2363301.8169	PROP. ROW
163+92.50	79.41' LT.	659078.2970	2363313.8850	EXIST. ROW
164+10.00	100.00' LT.	659093.3429	2363336.3251	PROP. ROW
166+67.09	100.00' LT.	659023.3873	2363583.7169	PERM. ESMT.
167+75.00	145.00' LT.	659037.3280	2363699.7980	PERM. ESMT.
169+28.37	100.00' LT.	658952.2910	2363835.1340	PERM. ESMT.
170+54.12	79.43' LT.	658898.2810	2363950.5400	EXIST. ROW
170+54.19	100.00' LT.	658918.0551	2363956.2106	PROP. ROW

LEGEND



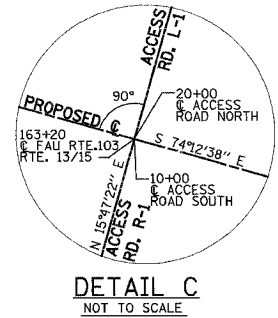
POINT OF DIRECT ACCESS - REFER TO NOTE A OR B

NOTE A:
THE EXISTING DIRECT ACCESS ENTRANCE AT THE DESIGNATED STATION SHOWN HEREON SHALL REMAIN IN EFFECT AND OPERATION ONLY AS LONG AS THE ENTRANCE IS USED FOR FARMING PURPOSES FOR ONE OR MORE SINGLE FAMILY RESIDENCES, AND AS LONG AS THE ENTRANCE IS NOT USED FOR ACCESS TO A COMMERCIAL ENTERPRISE OTHER THAN FARMING.

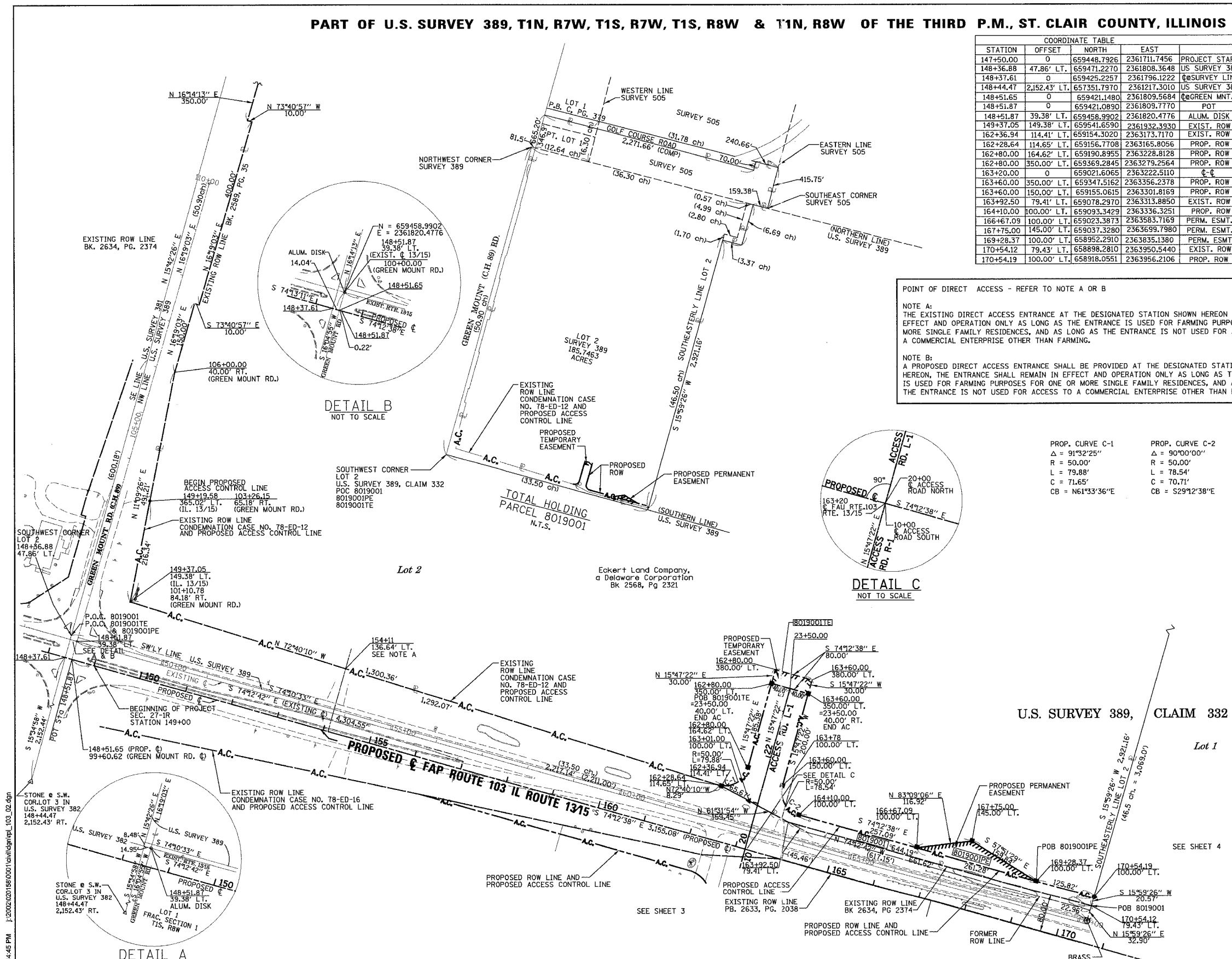
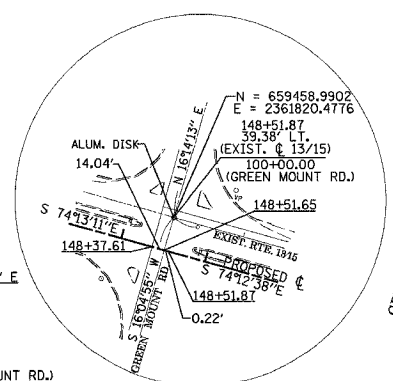
NOTE B:
A PROPOSED DIRECT ACCESS ENTRANCE SHALL BE PROVIDED AT THE DESIGNATED STATION SHOWN HEREON, THE ENTRANCE SHALL REMAIN IN EFFECT AND OPERATION ONLY AS LONG AS THE ENTRANCE IS USED FOR FARMING PURPOSES FOR ONE OR MORE SINGLE FAMILY RESIDENCES, AND AS LONG AS THE ENTRANCE IS NOT USED FOR ACCESS TO A COMMERCIAL ENTERPRISE OTHER THAN FARMING.

PROP. CURVE C-1
Δ = 91°32'25"
R = 50.00'
L = 79.88'
C = 71.65'
CB = N61°33'36"E

PROP. CURVE C-2
Δ = 90°00'00"
R = 50.00'
L = 78.54'
C = 70.71'
CB = S29°12'38"E



DETAIL B
NOT TO SCALE



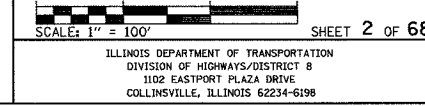
STATE OF ILLINOIS)
) SS
COUNTY OF ST. CLAIR)

THIS IS TO CERTIFY THAT I, RONALD G. BRIGHT AN ILLINOIS PROFESSIONAL LAND SURVEYOR, SURVEYED THE PLAT OF HIGHWAYS SHOWN HEREON IN U.S. SURVEYS NO. 382, 389, AND 772 AND IN SECTIONS 6, 7, 18, 19, 20, 29, AND 30, TOWNSHIP 1 SOUTH, RANGE 7 WEST, OF THE THIRD PRINCIPAL MERIDIAN, ST. CLAIR COUNTY, ILLINOIS, THAT THE SURVEY IS COMPLETE AS SHOWN TO THE BEST OF MY KNOWLEDGE AND BELIEF, THAT THE PLAT REPRESENTS SAID SURVEY, THAT ALL MONUMENTS FOUND AND ESTABLISHED ARE OF PERMANENT QUALITY AND OCCUPY THE POSITIONS SHOWN THEREON AND THAT THE MONUMENTS ARE SUFFICIENT TO ENABLE THE SURVEY TO BE RETRACED. MADE FOR THE DEPARTMENT OF TRANSPORTATION, STATE OF ILLINOIS.

DATED _____
RONALD G. BRIGHT, PLS #3157
EXPIRES NOVEMBER 30, 2006

kdg KUHLMANN DESIGN GROUP, INC.
15 E WASHINGTON STREET
BELLEVILLE, ILLINOIS 62220
(618) 234-8898

ILLINOIS DEPARTMENT OF TRANSPORTATION
PLAT OF HIGHWAYS
FAP ROUTE 103 (IL RTE. 13/15)
SECTION 27-1R
ST. CLAIR COUNTY
JOB NO. R-98-019-00
STATION 147+50 TO STATION 170+54.19



NOTES:
1. BEARINGS AND COORDINATES SHOWN HEREON ARE BASED ON SURVEY CONTROL DATA PROVIDED BY THE IL. DEPARTMENT OF TRANSPORTATION.
2. TOPOGRAPHY AS SHOWN SUPPLIED BY IL. DEPARTMENT OF TRANSPORTATION, DISTRICT 8 COLLINSVILLE, IL.

PARCEL NO.	OWNER	BOOK & PAGE	TOTAL HOLDING ACRES	FEE SIMPLE ACQUISITION				REMAINDER	EASEMENTS		PERMANENT TAX NUMBER	PROPERTY ACQUIRED BY			
				GROSS ACRES	SO. FT.	PREVIOUSLY DEDICATED ACRES	SO. FT.		NET ACRES	SO. FT.			PE = PERMANENT ACRES	TE = TEMPORARY ACRES	EASEMENT PURPOSE
8019001	ECKERT LAND COMPANY A DELAWARE CORPORATION TITLE REPORT NO. SC-2816	BK 2568 PG 2321	185.7401 ACRES	0.8218	35,798	N/A	N/A	0.8218	35,798	184.9183 ACRES	TE 0.0551 PE 0.1350	TE 2400 PE 5,879	TE-GRADING AND ENTRANCE CONSTRUCTION PE-GRADING, DRAINAGE AND MAINTENANCE	13-01-0-100-001 08-36-0-100-004 08-36-0-400-013-014-017	

3/2/2006 6:14:45 PM J:\2002\20189\001\103\103.dgn