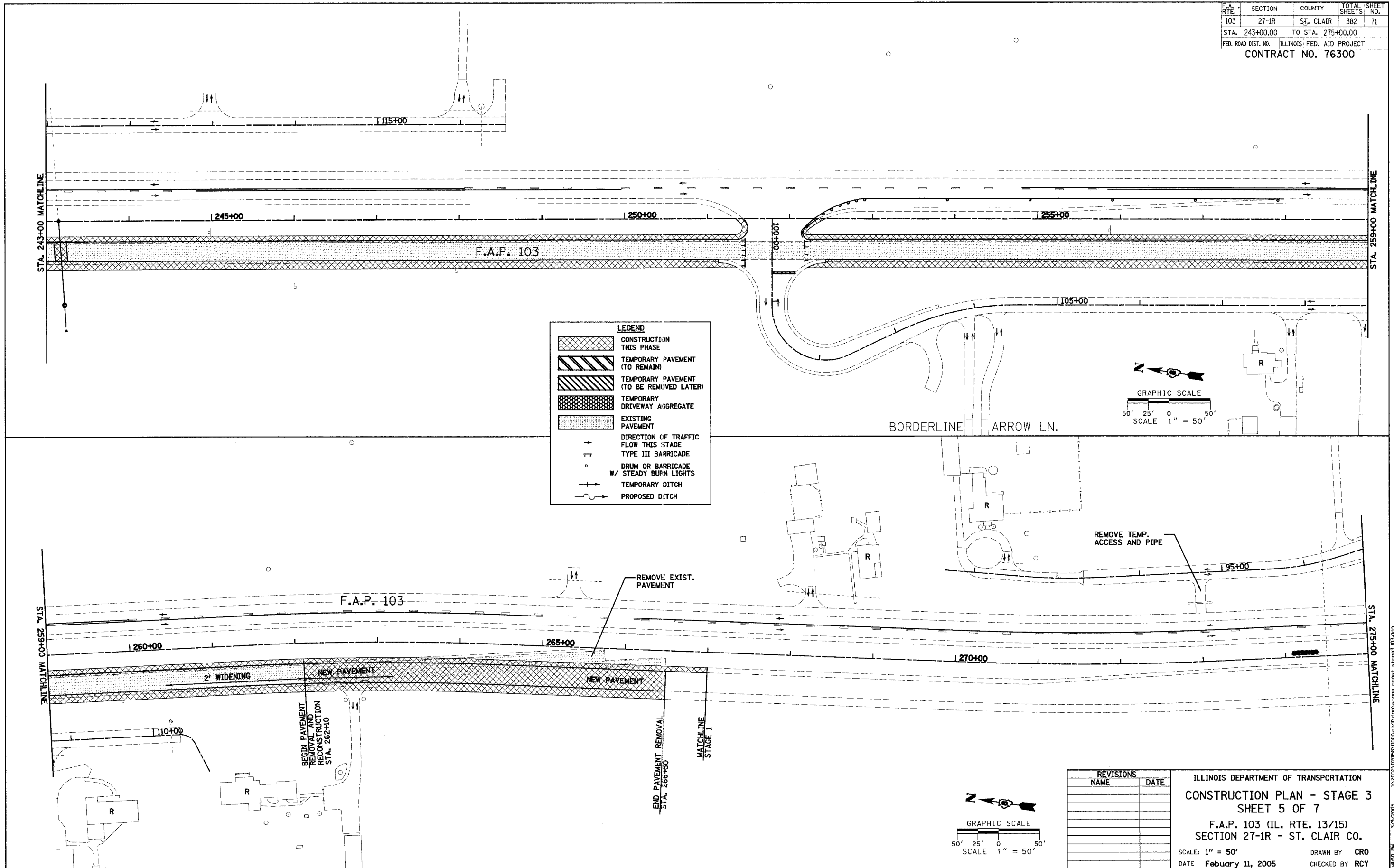


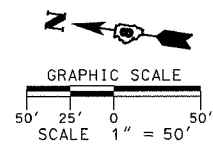
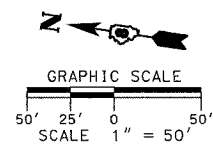
F.A. RTE.	SECTION	COUNTY	TOTAL SHEETS	SHEET NO.
103	27-1R	ST. CLAIR	382	71
STA. 243+00.00		TO STA. 275+00.00		
FED. ROAD DIST. NO.		ILLINOIS FED. AID PROJECT		
CONTRACT NO. 76300				

DATE	BY
PLAN	
NO.	
NOTE BOOK	
NO.	
FILE NAME	

DATE	BY
PLAN	
NO.	
NOTE BOOK	
NO.	
FILE NAME	



LEGEND	
	CONSTRUCTION THIS PHASE
	TEMPORARY PAVEMENT (TO REMAIN)
	TEMPORARY PAVEMENT (TO BE REMOVED LATER)
	TEMPORARY DRIVEWAY AGGREGATE
	EXISTING PAVEMENT
	DIRECTION OF TRAFFIC FLOW THIS STAGE
	TYPE III BARRICADE
	DRUM OR BARRICADE W/ STEADY BURN LIGHTS
	TEMPORARY DITCH
	PROPOSED DITCH



REVISIONS	DATE

ILLINOIS DEPARTMENT OF TRANSPORTATION
CONSTRUCTION PLAN - STAGE 3
SHEET 5 OF 7
 F.A.P. 103 (IL. RTE. 13/15)
 SECTION 27-1R - ST. CLAIR CO.
 SCALE: 1" = 50'
 DATE **February 11, 2005** DRAWN BY **CRO**
 CHECKED BY **RCY**

J:\2005\020505\020505\020505\stage3\stage3.dwg 3/9/2005 10:40:00 AM