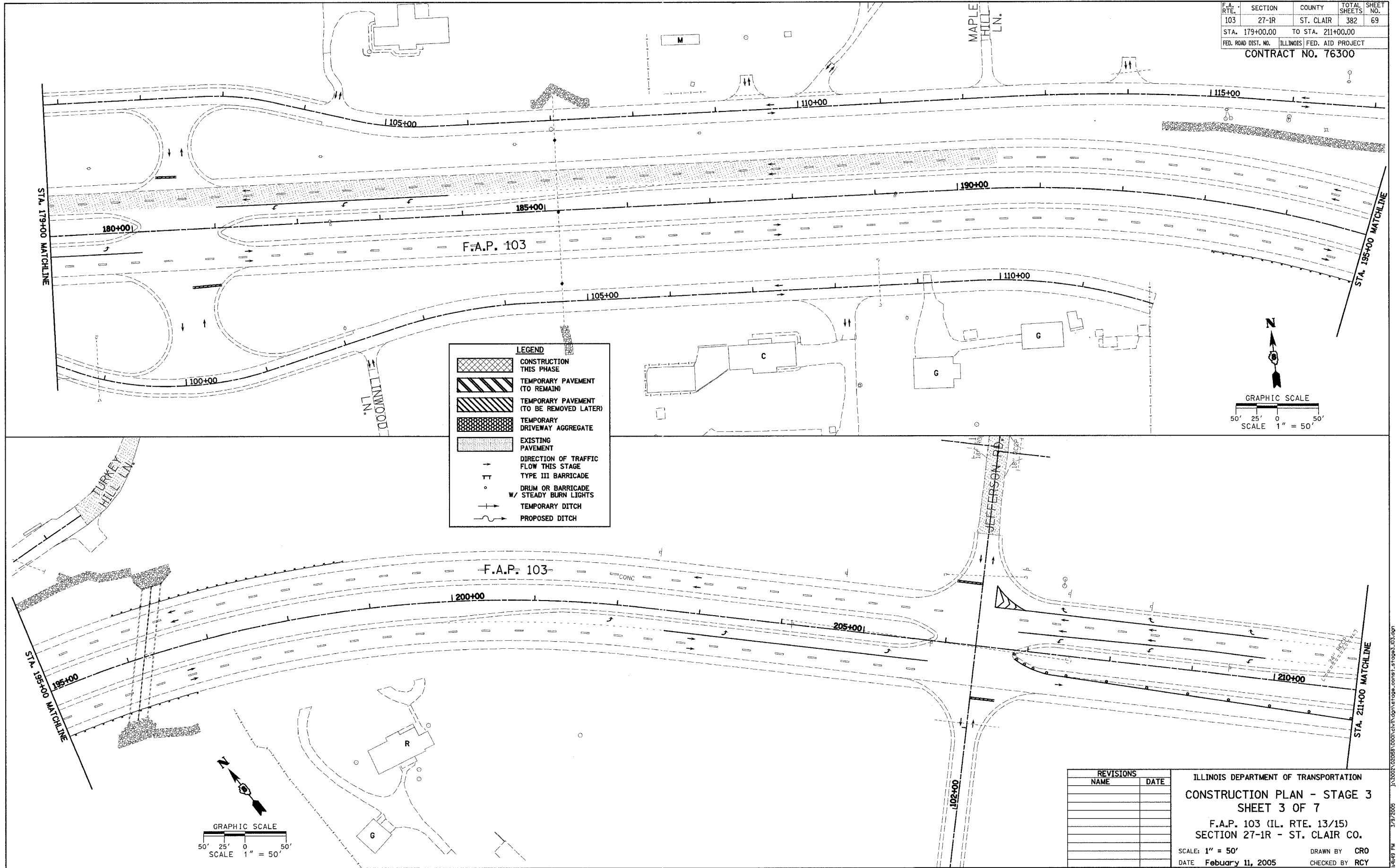


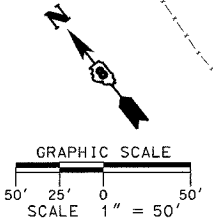
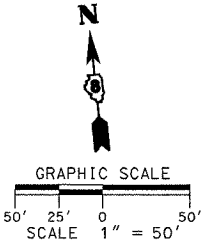
F.A.P. 103	SECTION 27-1R	COUNTY ST. CLAIR	TOTAL SHEETS 382	SHEET NO. 69
STA. 179+00.00		TO STA. 211+00.00		
FED. ROAD DIST. NO. ILLINOIS FED. AID PROJECT				
CONTRACT NO. 76300				

PLAN	DATE
BY	
REVIEWED	
ALIGNED	
CHECKED	
RT. OF WAY CHECKED	
NO.	
FILE NAME	

PLAN	DATE
BY	
REVIEWED	
ALIGNED	
CHECKED	
RT. OF WAY CHECKED	
NO.	
FILE NAME	



LEGEND	
[Cross-hatched pattern]	CONSTRUCTION THIS PHASE
[Diagonal lines /]	TEMPORARY PAVEMENT (TO REMAIN)
[Diagonal lines \]	TEMPORARY PAVEMENT (TO BE REMOVED LATER)
[Stippled pattern]	TEMPORARY DRIVEWAY AGGREGATE
[Dotted pattern]	EXISTING PAVEMENT
[Arrow pointing right]	DIRECTION OF TRAFFIC FLOW THIS STAGE
[T-shaped symbol]	TYPE III BARRICADE
[Circle with cross]	DRUM OR BARRICADE W/ STEADY BURN LIGHTS
[Dashed line]	TEMPORARY DITCH
[Wavy line]	PROPOSED DITCH



REVISIONS	
NAME	DATE

ILLINOIS DEPARTMENT OF TRANSPORTATION
CONSTRUCTION PLAN - STAGE 3
SHEET 3 OF 7
 F.A.P. 103 (IL. RTE. 13/15)
 SECTION 27-1R - ST. CLAIR CO.
 SCALE: 1" = 50'
 DATE February 11, 2005
 DRAWN BY CRO
 CHECKED BY RCY

J:\2002\02085\001\civil\stage3\stage3_sheets.dwg 2/9/2005 4:49 PM