

PLAN SURVEYED BY DATE  
 CHECKED BY DATE  
 NOTE BOOK NO. OF PAGES CHECKED  
 I.D. NO. NOTED  
 STRUCTURE NOTATIONS CHECKED

PROFILE SURVEYED BY DATE  
 CHECKED BY DATE  
 NOTE BOOK NO. OF PAGES CHECKED  
 I.D. NO. NOTED  
 STRUCTURE NOTATIONS CHECKED

PROP. CURVE P.AR.L2-1  
 PI STA. = 85+67.73  
 $\Delta = 131^\circ 02' 13''$  (RT)  
 $D = 57^\circ 17' 45''$   
 $R = 100.00'$   
 $T = 219.62'$   
 $L = 228.70'$   
 $E = 141.31'$   
 $\theta = 4\%$   
 $T.R. = 28'$   
 $S.E. RUN = 72'$   
 $P.C. STA. = 83+48.12$   
 $P.R.C. STA. = 85+76.82$

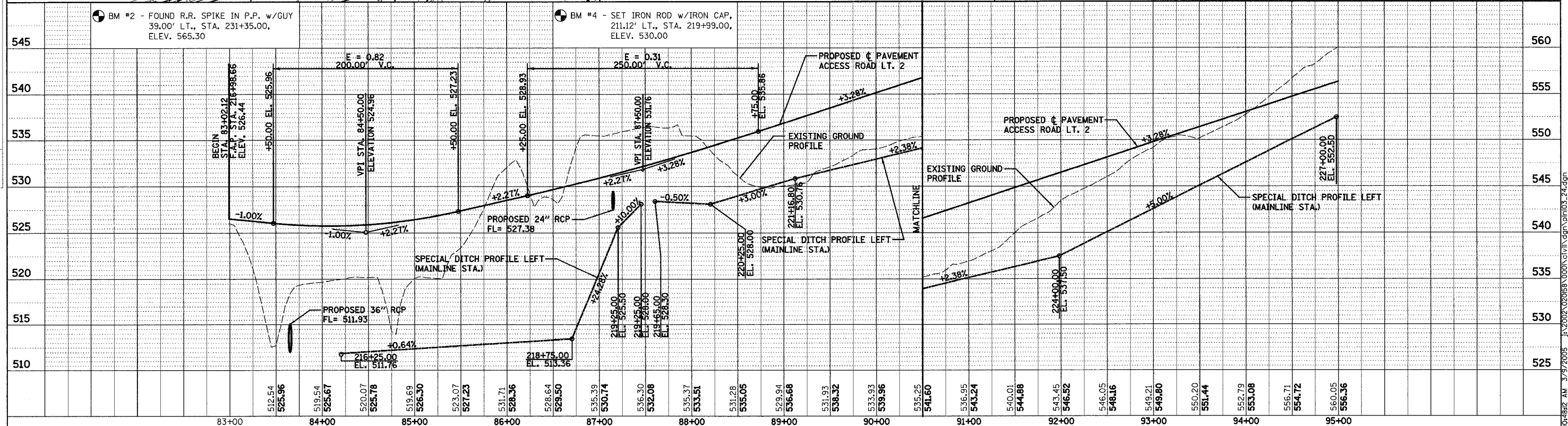
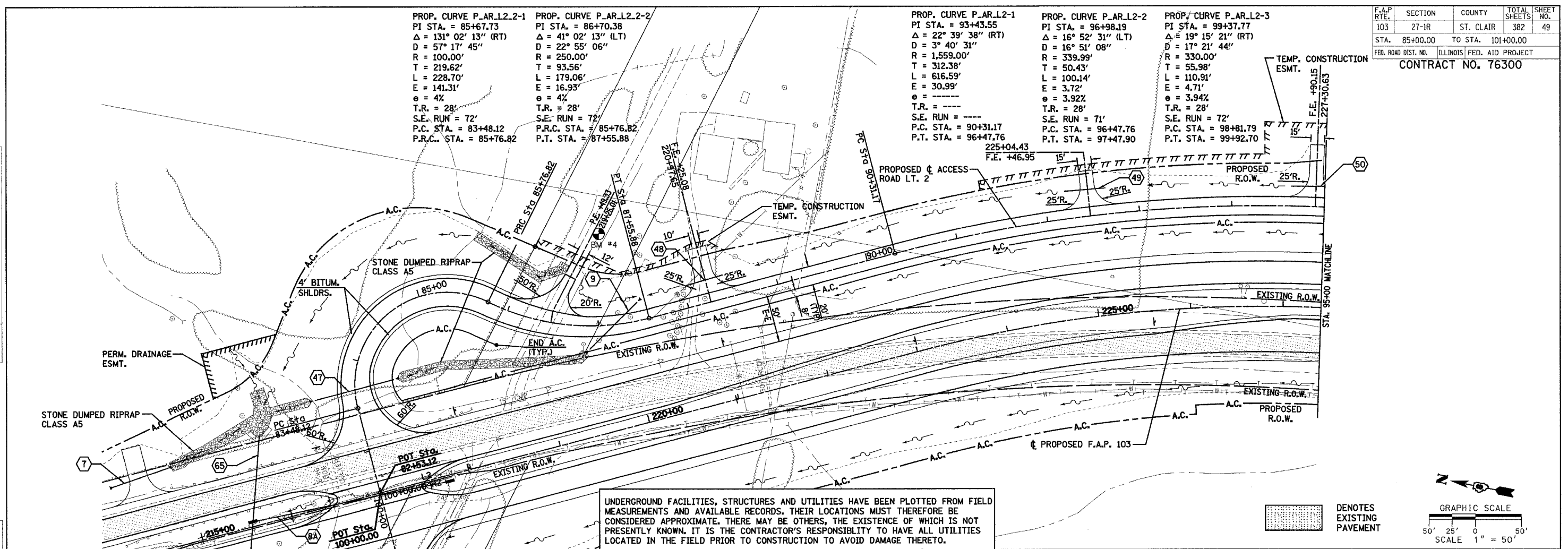
PROP. CURVE P.AR.L2-2  
 PI STA. = 86+70.38  
 $\Delta = 41^\circ 02' 13''$  (LT)  
 $D = 22^\circ 55' 06''$   
 $R = 250.00'$   
 $T = 93.56'$   
 $L = 179.06'$   
 $E = 16.93'$   
 $\theta = 4\%$   
 $T.R. = 28'$   
 $S.E. RUN = 72'$   
 $P.R.C. STA. = 85+76.82$   
 $P.T. STA. = 87+55.88$

PROP. CURVE P.AR.L2-1  
 PI STA. = 93+43.55  
 $\Delta = 22^\circ 39' 38''$  (RT)  
 $D = 3^\circ 40' 31''$   
 $R = 1,559.00'$   
 $T = 312.38'$   
 $L = 616.59'$   
 $E = 30.99'$   
 $\theta = \text{-----}$   
 $T.R. = \text{-----}$   
 $S.E. RUN = \text{-----}$   
 $P.C. STA. = 90+31.17$   
 $P.T. STA. = 96+47.76$

PROP. CURVE P.AR.L2-2  
 PI STA. = 96+98.19  
 $\Delta = 16^\circ 52' 31''$  (LT)  
 $D = 16^\circ 51' 08''$   
 $R = 339.99'$   
 $T = 50.43'$   
 $L = 100.14'$   
 $E = 3.72'$   
 $\theta = 3.92\%$   
 $T.R. = 28'$   
 $S.E. RUN = 71'$   
 $P.C. STA. = 96+47.76$   
 $P.T. STA. = 97+47.90$

PROP. CURVE P.AR.L2-3  
 PI STA. = 99+37.77  
 $\Delta = 19^\circ 15' 21''$  (RT)  
 $D = 17^\circ 21' 44''$   
 $R = 330.00'$   
 $T = 55.98'$   
 $L = 110.91'$   
 $E = 4.71'$   
 $\theta = 3.94\%$   
 $T.R. = 28'$   
 $S.E. RUN = 72'$   
 $P.C. STA. = 98+81.79$   
 $P.T. STA. = 99+92.70$

F.A.P. RTE.	SECTION	COUNTY	TOTAL SHEETS	SHEET NO.
103	27-IR	ST. CLAIR	382	49
STA. 85+00.00	TO STA. 101+00.00			
FED. ROAD DIST. NO.	ILLINOIS	FED. AID PROJECT	CONTRACT NO. 76300	



PLAN & PROFILE - ACCESS ROAD LT. 2