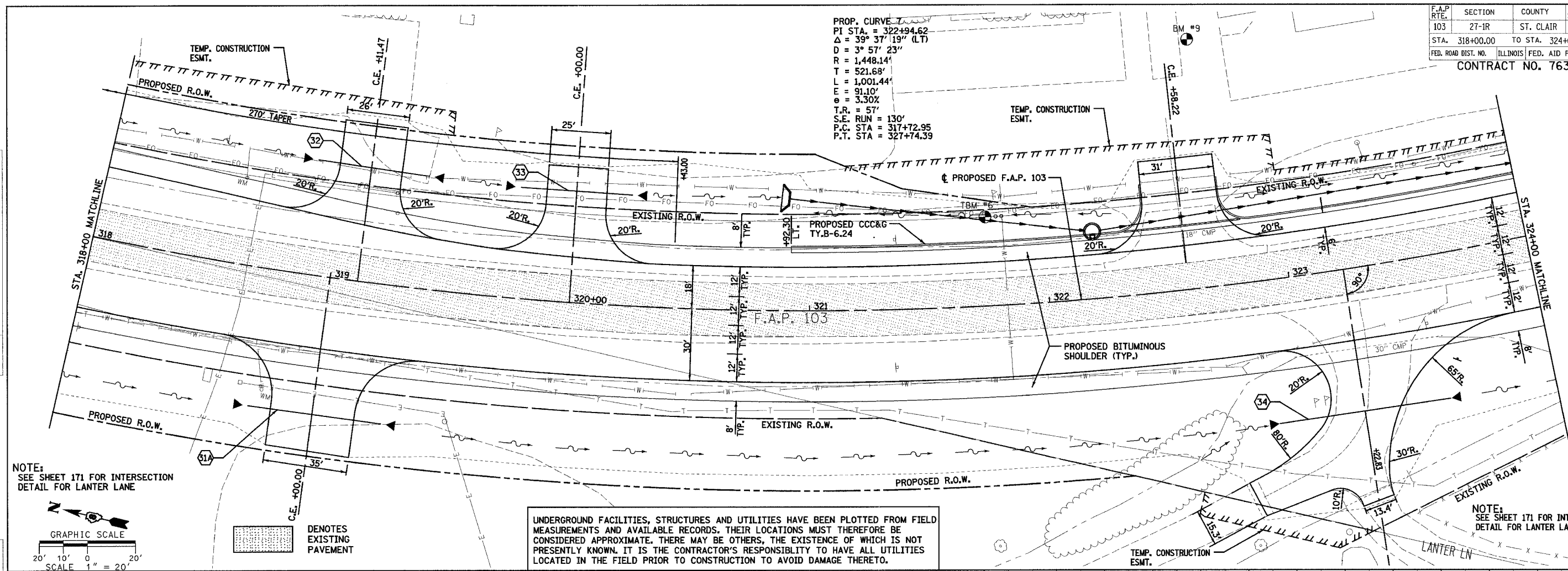
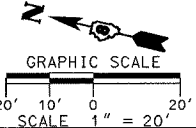


F.A.P. RTE.	SECTION	COUNTY	TOTAL SHEETS	SHEET NO.
103	27-1R	ST. CLAIR	382	40
STA. 318+00.00		TO STA. 324+00.00		
FED. ROAD DIST. NO.		ILLINOIS FED. AID PROJECT		
CONTRACT NO. 76300				

PROP. CURVE
 PI STA. = 322+94.62
 $\Delta = 39^\circ 37' 19''$ (LT)
 $D = 3^\circ 57' 23''$
 $R = 1,448.14'$
 $T = 521.68'$
 $L = 1,001.44'$
 $E = 91.10'$
 $e = 3.30\%$
 $T.R. = 57'$
 $S.F. RUN = 130'$
 $P.C. STA = 317+72.95$
 $P.T. STA = 327+74.39$



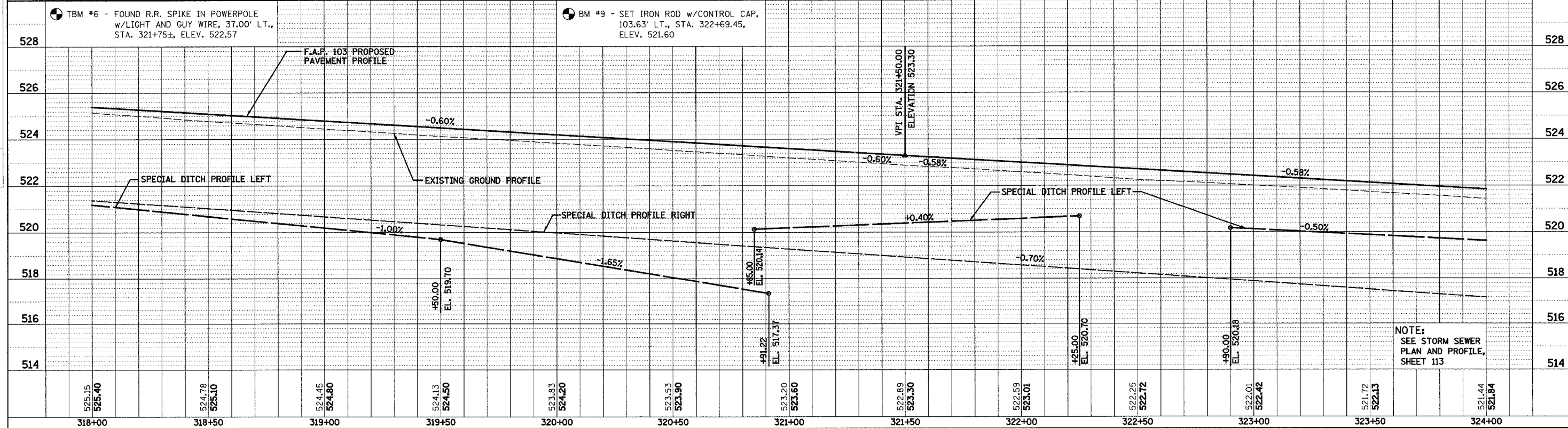
NOTE: SEE SHEET 171 FOR INTERSECTION DETAIL FOR LANTER LANE



█ DENOTES EXISTING PAVEMENT

UNDERGROUND FACILITIES, STRUCTURES AND UTILITIES HAVE BEEN PLOTTED FROM FIELD MEASUREMENTS AND AVAILABLE RECORDS. THEIR LOCATIONS MUST THEREFORE BE CONSIDERED APPROXIMATE. THERE MAY BE OTHERS, THE EXISTENCE OF WHICH IS NOT PRESENTLY KNOWN. IT IS THE CONTRACTOR'S RESPONSIBILITY TO HAVE ALL UTILITIES LOCATED IN THE FIELD PRIOR TO CONSTRUCTION TO AVOID DAMAGE THERETO.

NOTE: SEE SHEET 171 FOR INTERSECTION DETAIL FOR LANTER LANE.



NOTE: SEE STORM SEWER PLAN AND PROFILE, SHEET 113