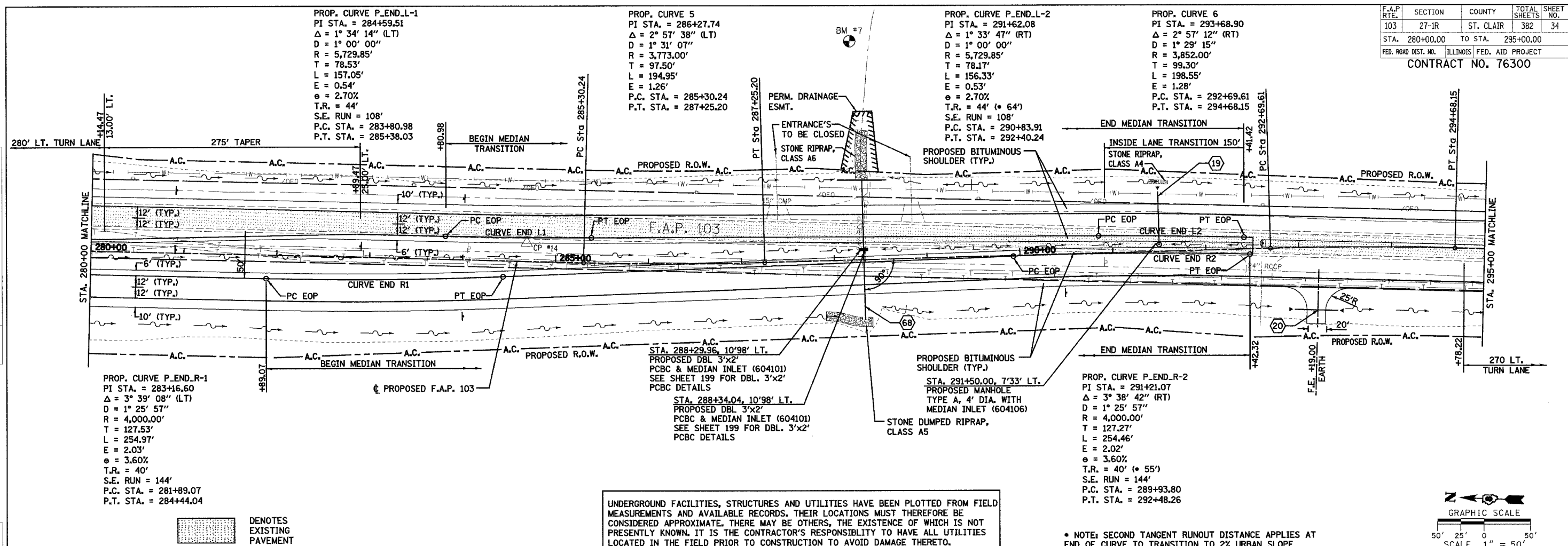


F.A.P. RTE.	SECTION	COUNTY	TOTAL SHEETS	SHEET NO.
103	27-1R	ST. CLAIR	382	34
STA. 280+00.00		TO STA. 295+00.00		
FED. ROAD DIST. NO.		ILLINOIS FED. AID PROJECT		
CONTRACT NO. 76300				



PROP. CURVE P_END_L-1
 PI STA. = 284+59.51
 $\Delta = 1^\circ 34' 14''$ (LT)
 $D = 1^\circ 00' 00''$
 $R = 5,729.85'$
 $T = 78.53'$
 $L = 157.05'$
 $E = 0.54'$
 $\theta = 2.70\%$
 $T.R. = 44'$
 $S.E. RUN = 108'$
 $P.C. STA. = 283+80.98$
 $P.T. STA. = 285+38.03$

PROP. CURVE 5
 PI STA. = 286+27.74
 $\Delta = 2^\circ 57' 38''$ (LT)
 $D = 1^\circ 31' 07''$
 $R = 3,773.00'$
 $T = 97.50'$
 $L = 194.95'$
 $E = 1.26'$
 $P.C. STA. = 285+30.24$
 $P.T. STA. = 287+25.20$

PROP. CURVE P_END_L-2
 PI STA. = 291+62.08
 $\Delta = 1^\circ 33' 47''$ (RT)
 $D = 1^\circ 00' 00''$
 $R = 5,729.85'$
 $T = 78.17'$
 $L = 156.33'$
 $E = 0.53'$
 $\theta = 2.70\%$
 $T.R. = 44' (\bullet 64')$
 $S.E. RUN = 108'$
 $P.C. STA. = 290+83.91$
 $P.T. STA. = 292+40.24$

PROP. CURVE 6
 PI STA. = 293+68.90
 $\Delta = 2^\circ 57' 12''$ (RT)
 $D = 1^\circ 29' 15''$
 $R = 3,852.00'$
 $T = 99.30'$
 $L = 198.55'$
 $E = 1.28'$
 $P.C. STA. = 292+69.61$
 $P.T. STA. = 294+68.15$

PROP. CURVE P_END_R-1
 PI STA. = 283+16.60
 $\Delta = 3^\circ 39' 08''$ (LT)
 $D = 1^\circ 25' 57''$
 $R = 4,000.00'$
 $T = 127.53'$
 $L = 254.97'$
 $E = 2.03'$
 $\theta = 3.60\%$
 $T.R. = 40'$
 $S.E. RUN = 144'$
 $P.C. STA. = 281+89.07$
 $P.T. STA. = 284+44.04$

STA. 288+29.96, 10'98" LT.
 PROPOSED DBL 3'x2'
 PCBC & MEDIAN INLET (604101)
 SEE SHEET 199 FOR DBL. 3'x2'
 PCBC DETAILS

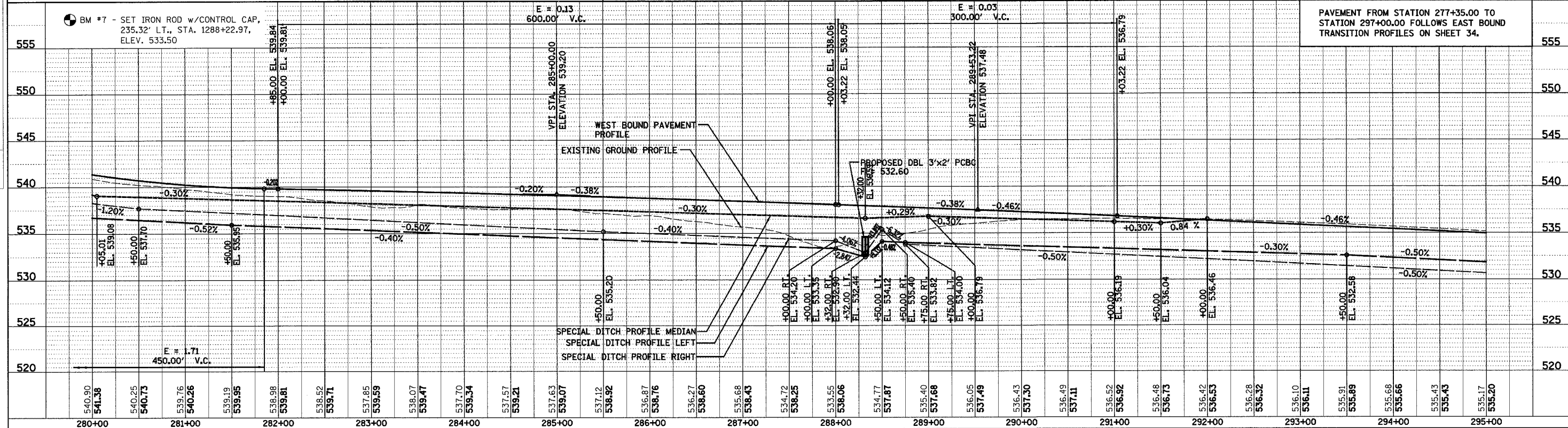
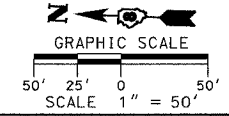
STA. 288+34.04, 10'98" LT.
 PROPOSED DBL 3'x2'
 PCBC & MEDIAN INLET (604101)
 SEE SHEET 199 FOR DBL. 3'x2'
 PCBC DETAILS

PROP. CURVE P_END_R-2
 PI STA. = 291+21.07
 $\Delta = 3^\circ 38' 42''$ (RT)
 $D = 1^\circ 25' 57''$
 $R = 4,000.00'$
 $T = 127.27'$
 $L = 254.46'$
 $E = 2.02'$
 $\theta = 3.60\%$
 $T.R. = 40' (\bullet 55')$
 $S.E. RUN = 144'$
 $P.C. STA. = 289+83.80$
 $P.T. STA. = 292+48.26$

UNDERGROUND FACILITIES, STRUCTURES AND UTILITIES HAVE BEEN PLOTTED FROM FIELD MEASUREMENTS AND AVAILABLE RECORDS. THEIR LOCATIONS MUST THEREFORE BE CONSIDERED APPROXIMATE. THERE MAY BE OTHERS, THE EXISTENCE OF WHICH IS NOT PRESENTLY KNOWN. IT IS THE CONTRACTOR'S RESPONSIBILITY TO HAVE ALL UTILITIES LOCATED IN THE FIELD PRIOR TO CONSTRUCTION TO AVOID DAMAGE THERETO.

* NOTE: SECOND TANGENT RUNOUT DISTANCE APPLIES AT END OF CURVE TO TRANSITION TO 2% URBAN SLOPE

■ DENOTES EXISTING PAVEMENT



PLAN & PROFILE - F.A.P. 103