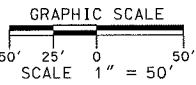
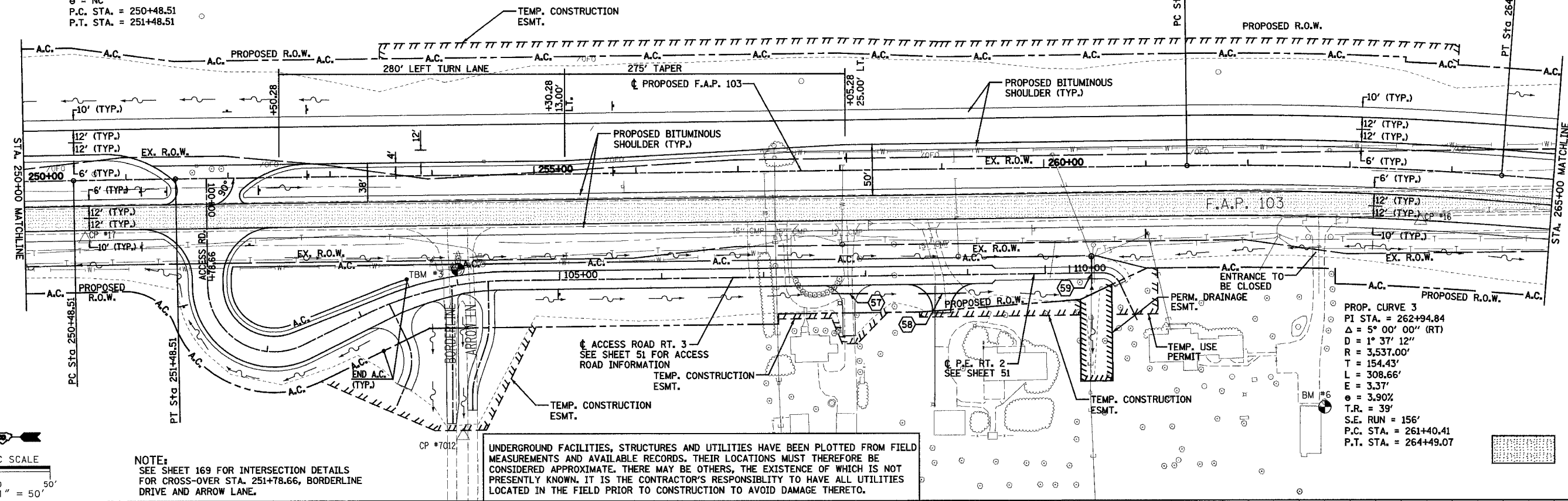


| F.A.P. RTE. | SECTION | COUNTY | TOTAL SHEETS | SHEET NO. |
|---------------------|---------|---------------------------|--------------|-----------|
| 103 | 27-1R | ST. CLAIR | 382 | 32 |
| STA. 250+00.00 | | TO STA. 265+00.00 | | |
| FED. ROAD DIST. NO. | | ILLINOIS FED. AID PROJECT | | |
| CONTRACT NO. 76300 | | | | |

PROP. CURVE 2A
 PI STA. = 250+98.51
 $\Delta = 0^\circ 16' 54''$ (RT)
 $D = 0^\circ 16'$
 $R = 20,343'$
 $T = 50.00'$
 $L = 100.00'$
 $E = 0.06'$
 $\theta = NC$
 P.C. STA. = 250+48.51
 P.T. STA. = 251+48.51

PROP. CURVE 3
 PI STA. = 262+94.84
 $\Delta = 5^\circ 00' 00''$ (RT)
 $D = 1^\circ 37' 12''$
 $R = 3,537.00'$
 $T = 154.43'$
 $L = 308.66'$
 $E = 3.37'$
 $\theta = 3.90^\circ$
 $T.R. = 39'$
 S.E. RUN = 156'
 P.C. STA. = 261+40.41
 P.T. STA. = 264+49.07

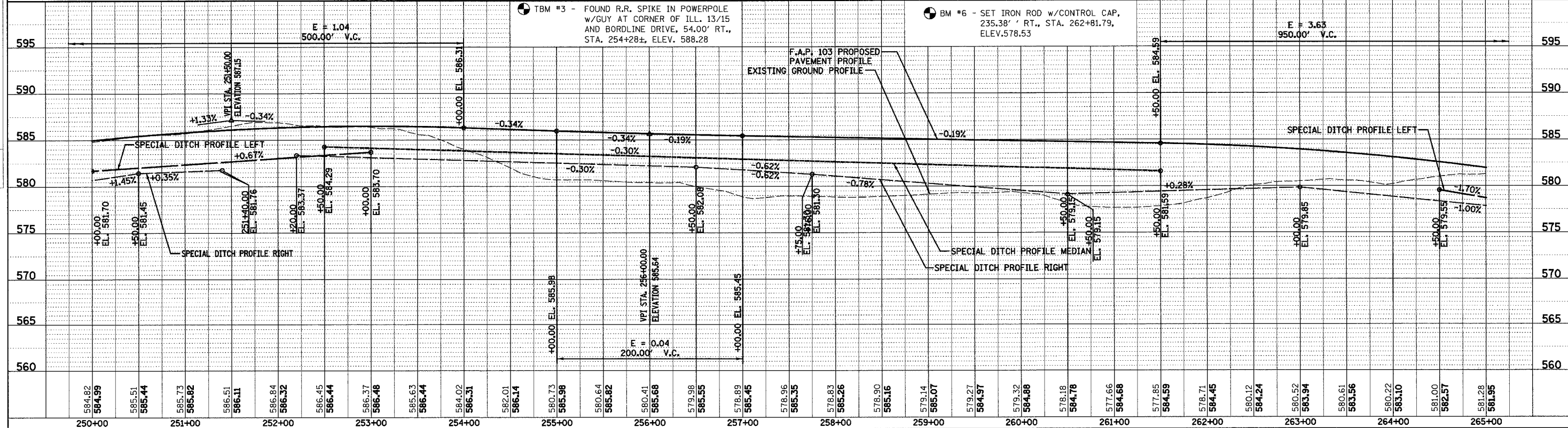


NOTE:
 SEE SHEET 169 FOR INTERSECTION DETAILS FOR CROSS-OVER STA. 251+78.66, BORDERLINE DRIVE AND ARROW LANE.

UNDERGROUND FACILITIES, STRUCTURES AND UTILITIES HAVE BEEN PLOTTED FROM FIELD MEASUREMENTS AND AVAILABLE RECORDS. THEIR LOCATIONS MUST THEREFORE BE CONSIDERED APPROXIMATE. THERE MAY BE OTHERS, THE EXISTENCE OF WHICH IS NOT PRESENTLY KNOWN. IT IS THE CONTRACTOR'S RESPONSIBILITY TO HAVE ALL UTILITIES LOCATED IN THE FIELD PRIOR TO CONSTRUCTION TO AVOID DAMAGE THERETO.

TBM #3 - FOUND R.R. SPIKE IN POWERPOLE W/GUY AT CORNER OF ILL. 13/15 AND BORDERLINE DRIVE, 54.00' RT., STA. 254+28±, ELEV. 588.28

BM #6 - SET IRON ROD W/CONTROL CAP, 235.38' RT., STA. 262+81.79, ELEV. 578.53



PLAN & PROFILE - F.A.P. 103