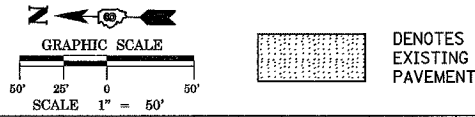
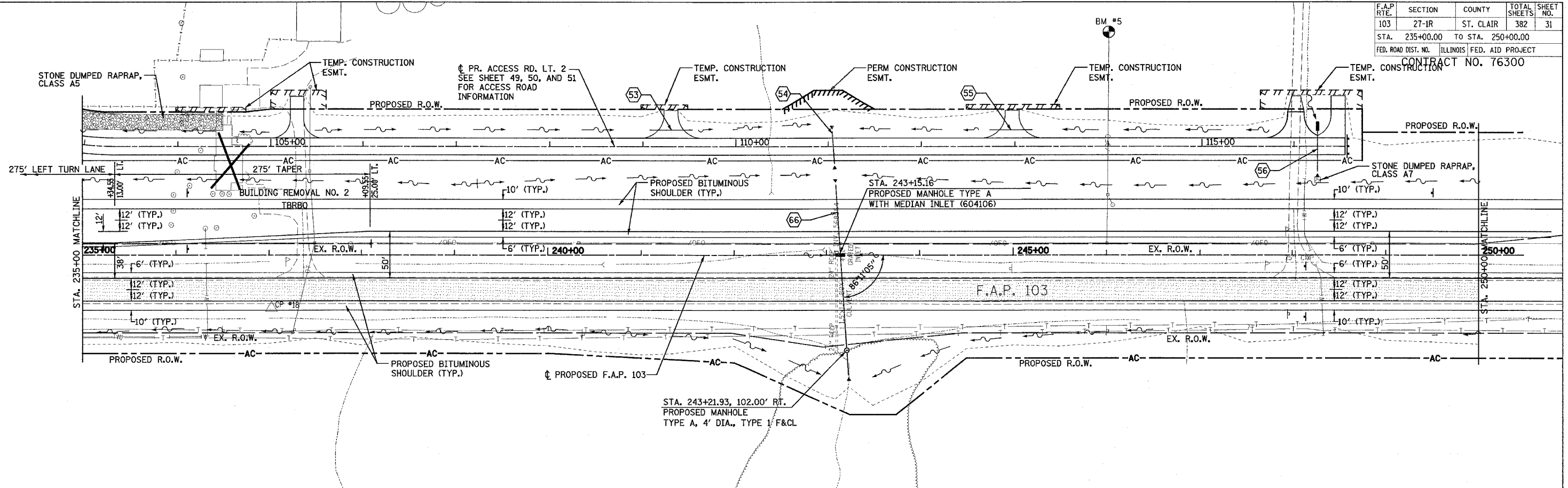


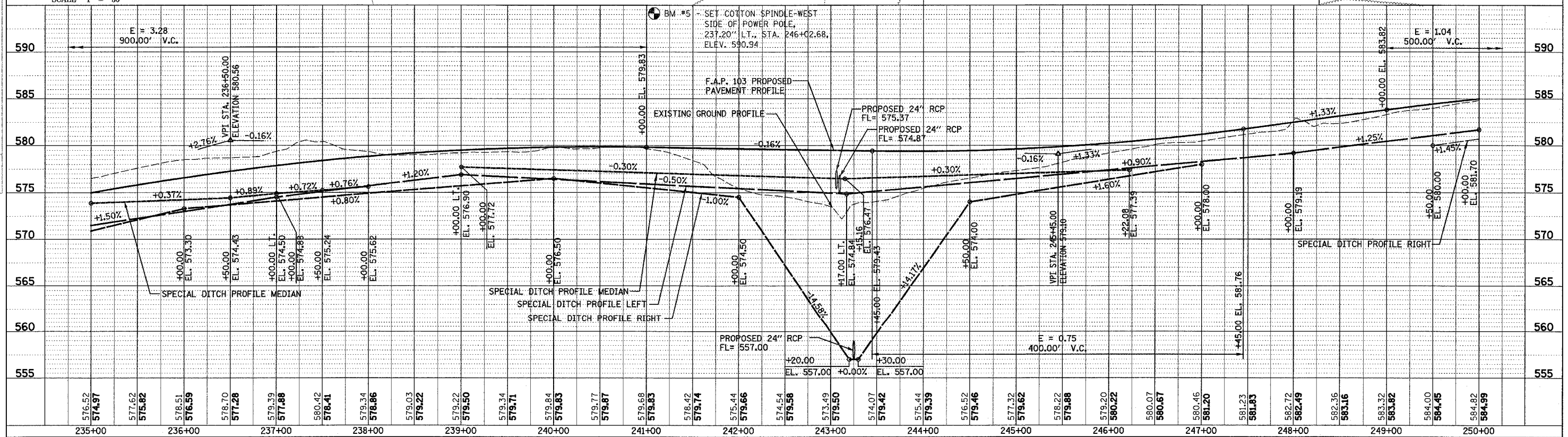
F.A.P. RTE.	SECTION	COUNTY	TOTAL SHEETS	SHEET NO.
103	27-1R	ST. CLAIR	382	31
STA. 235+00.00 TO STA. 250+00.00		ILLINOIS FED. AID PROJECT		
CONTRACT NO. 76300				



UNDERGROUND FACILITIES, STRUCTURES AND UTILITIES HAVE BEEN PLOTTED FROM FIELD MEASUREMENTS AND AVAILABLE RECORDS. THEIR LOCATIONS MUST THEREFORE BE CONSIDERED APPROXIMATE. THERE MAY BE OTHERS, THE EXISTENCE OF WHICH IS NOT PRESENTLY KNOWN. IT IS THE CONTRACTOR'S RESPONSIBILITY TO HAVE ALL UTILITIES LOCATED IN THE FIELD PRIOR TO CONSTRUCTION TO AVOID DAMAGE THERETO.

PLAN	DATE	BY
DATE	BY	
DATE	BY	
DATE	BY	

PROFILE	DATE	BY
DATE	BY	
DATE	BY	
DATE	BY	



PLAN & PROFILE - F.A.P. 103