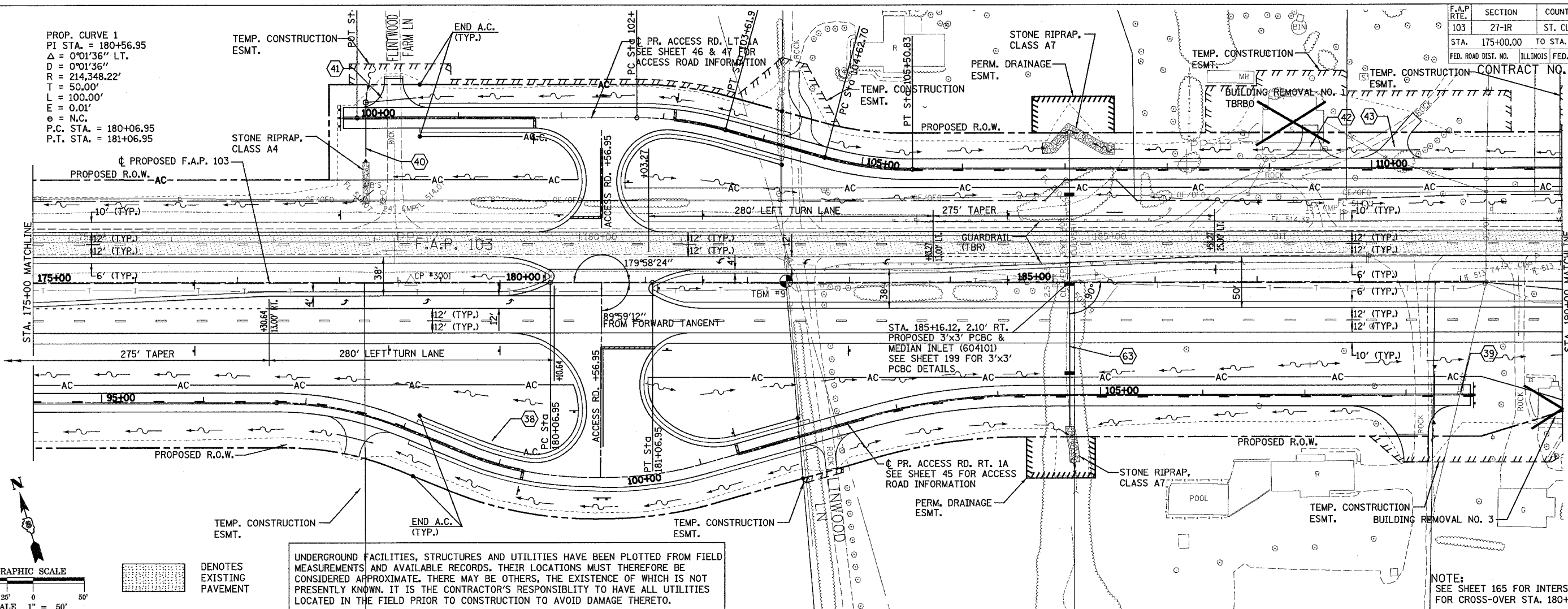


F.A.P. RTE.	SECTION	COUNTY	TOTAL SHEETS	SHEET NO.
103	27-IR	ST. CLAIR	382	27
STA. 175+00.00		TO STA. 190+00.00		
FED. ROAD DIST. NO.		ILLINOIS FED. AID PROJECT		

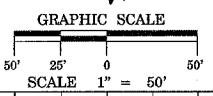
CONTRACT NO. 76300

PROP. CURVE 1
 PI STA. = 180+56.95
 $\Delta = 0^{\circ}01'36''$ LT.
 $D = 0^{\circ}01'36''$
 $R = 214,348.22'$
 $T = 50.00'$
 $L = 100.00'$
 $E = 0.01'$
 $\theta = N.C.$
 P.C. STA. = 180+06.95
 P.T. STA. = 181+06.95



UNDERGROUND FACILITIES, STRUCTURES AND UTILITIES HAVE BEEN PLOTTED FROM FIELD MEASUREMENTS AND AVAILABLE RECORDS. THEIR LOCATIONS MUST THEREFORE BE CONSIDERED APPROXIMATE. THERE MAY BE OTHERS, THE EXISTENCE OF WHICH IS NOT PRESENTLY KNOWN. IT IS THE CONTRACTOR'S RESPONSIBILITY TO HAVE ALL UTILITIES LOCATED IN THE FIELD PRIOR TO CONSTRUCTION TO AVOID DAMAGE THERETO.

NOTE:
 SEE SHEET 165 FOR INTERSECTION DETAILS FOR CROSS-OVER STA. 180+56.95



DENOTES EXISTING PAVEMENT

TBM #9 - FOUND R.R. SPIKE IN POWERPOLE S.W. CORNER OF ILL. 13/15 AND LINWOOD LANE, 38.00' RT., STA. 182.03±, ELEV. 519.47

