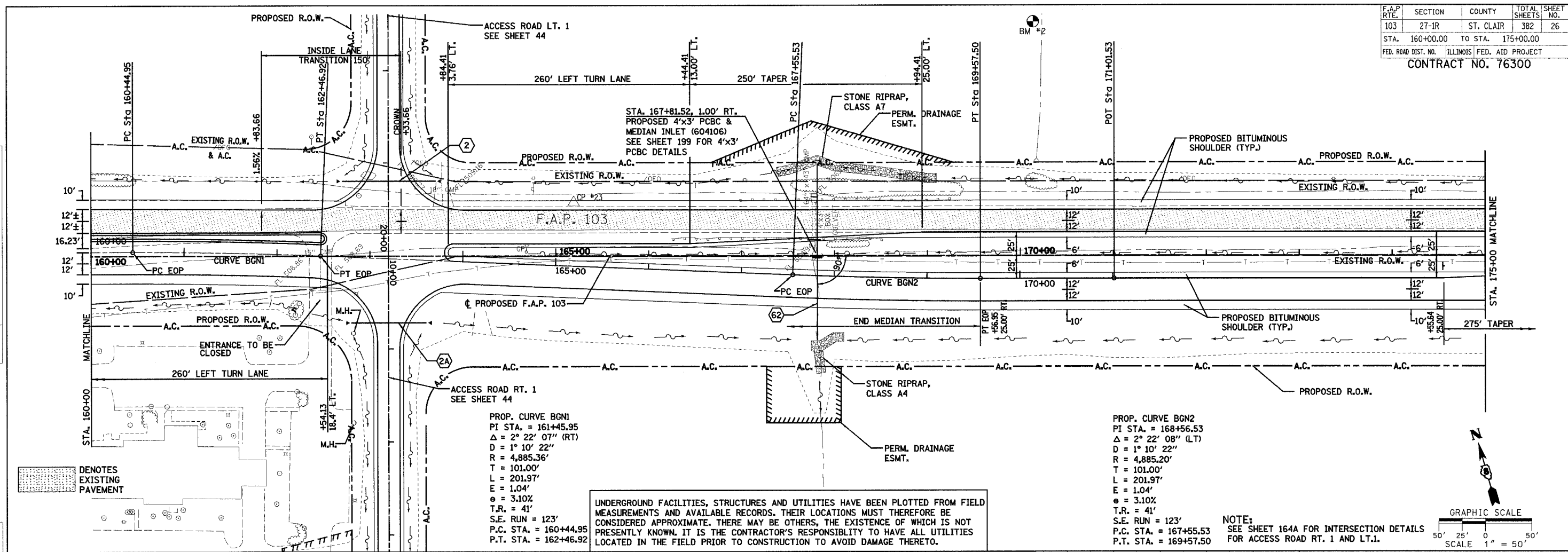


F.A.P. RT. 103	SECTION 27-1R	COUNTY ST. CLAIR	TOTAL SHEETS 382	SHEET NO. 26
STA. 160+00.00		TO STA. 175+00.00		
FED. ROAD DIST. NO.		ILLINOIS FED. AID PROJECT		
CONTRACT NO. 76300				

PLAN	DATE	BY
SURVEYED		
PLOTTED		
CHECKED		
DATE		
NO.		

PROFILE	DATE	BY
SURVEYED		
PLOTTED		
CHECKED		
DATE		
NO.		



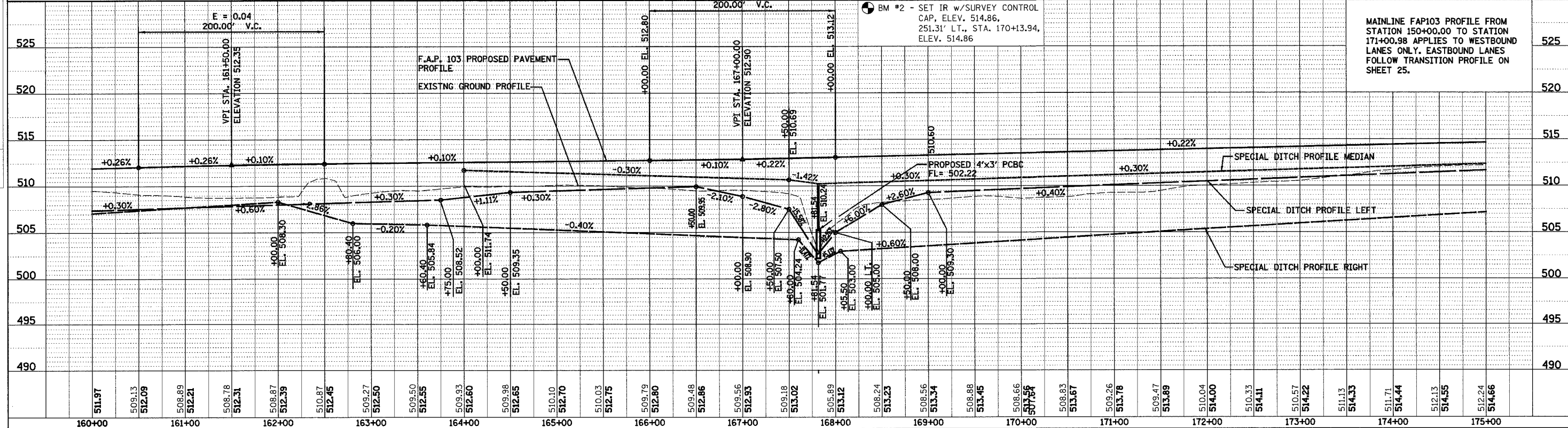
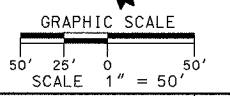
DENOTES EXISTING PAVEMENT

PROP. CURVE BGN1
 PI STA. = 161+45.95
 $\Delta = 2^\circ 22' 07''$ (RT)
 $D = 1^\circ 10' 22''$
 $R = 4,885.36'$
 $T = 101.00'$
 $L = 201.97'$
 $E = 1.04'$
 $\theta = 3.10\%$
 $T.R. = 41'$
 $S.E. RUN = 123'$
 P.C. STA. = 160+44.95
 P.T. STA. = 162+46.92

UNDERGROUND FACILITIES, STRUCTURES AND UTILITIES HAVE BEEN PLOTTED FROM FIELD MEASUREMENTS AND AVAILABLE RECORDS. THEIR LOCATIONS MUST THEREFORE BE CONSIDERED APPROXIMATE. THERE MAY BE OTHERS, THE EXISTENCE OF WHICH IS NOT PRESENTLY KNOWN. IT IS THE CONTRACTOR'S RESPONSIBILITY TO HAVE ALL UTILITIES LOCATED IN THE FIELD PRIOR TO CONSTRUCTION TO AVOID DAMAGE THERETO.

PROP. CURVE BGN2
 PI STA. = 168+56.53
 $\Delta = 2^\circ 22' 08''$ (LT)
 $D = 1^\circ 10' 22''$
 $R = 4,885.20'$
 $T = 101.00'$
 $L = 201.97'$
 $E = 1.04'$
 $\theta = 3.10\%$
 $T.R. = 41'$
 $S.E. RUN = 123'$
 P.C. STA. = 167+55.53
 P.T. STA. = 169+57.50

NOTE:
 SEE SHEET 164A FOR INTERSECTION DETAILS FOR ACCESS ROAD RT. 1 AND LT.1.



MAINLINE FAP103 PROFILE FROM STATION 150+00.00 TO STATION 171+00.98 APPLIES TO WESTBOUND LANES ONLY. EASTBOUND LANES FOLLOW TRANSITION PROFILE ON SHEET 25.

PLAN & PROFILE - F.A.P. 103