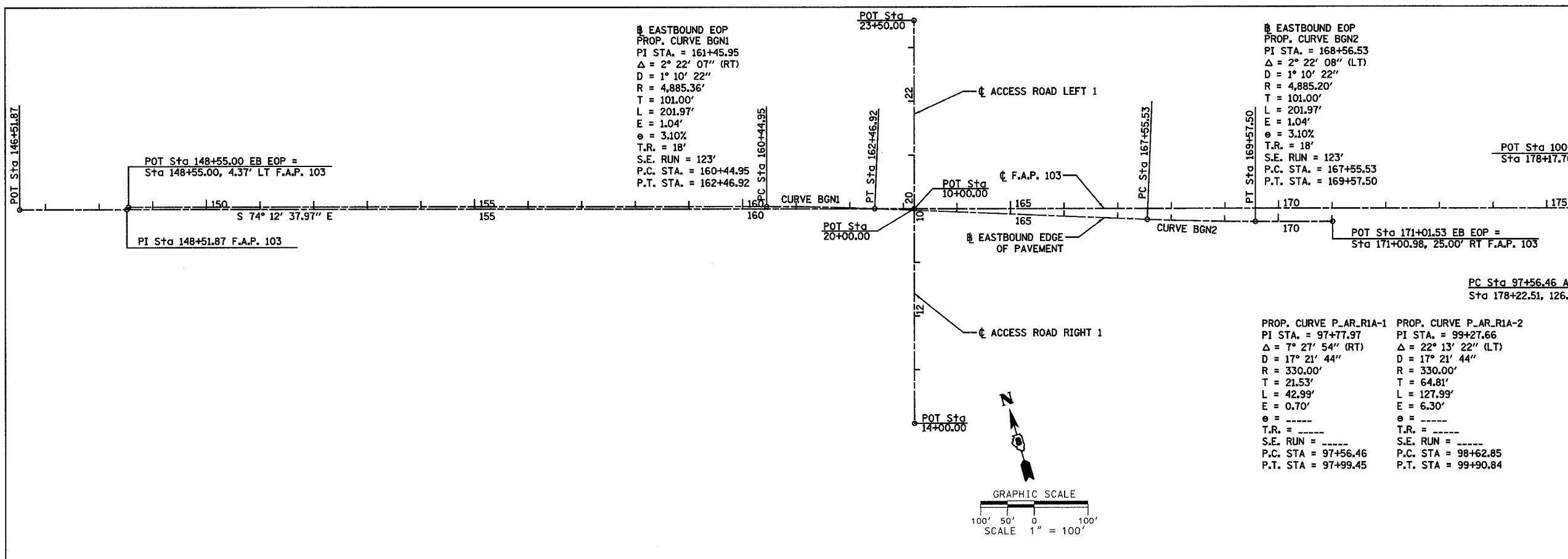


F.A. RTE.	SECTION	COUNTY	TOTAL SHEETS	SHEET NO.
103	27-1R	ST. CLAIR	382	21
STA.		TO STA.		
FED. ROAD DIST. NO.		ILLINOIS FED. AID PROJECT		

CONTRACT NO. 76300  
 ACCESS ROAD LEFT 1A



§ EASTBOUND EOP  
 PROP. CURVE BGN1  
 PI STA. = 161+45.95  
 $\Delta = 2^\circ 22' 07''$  (RT)  
 $D = 1^\circ 10' 22''$   
 $R = 4,885.36'$   
 $T = 101.00'$   
 $L = 201.97'$   
 $E = 1.04'$   
 $\theta = 3.10\%$   
 $T.R. = 18'$   
 $S.E. RUN = 123'$   
 $P.C. STA. = 160+44.95$   
 $P.T. STA. = 162+46.92$

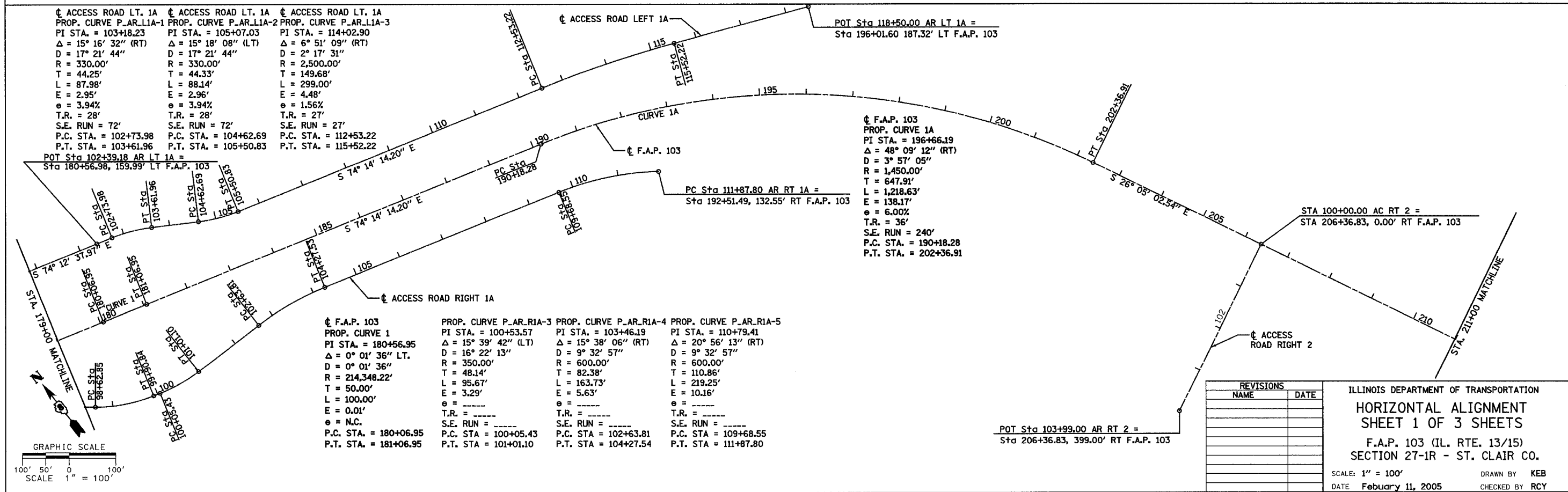
§ EASTBOUND EOP  
 PROP. CURVE BGN2  
 PI STA. = 168+56.53  
 $\Delta = 2^\circ 22' 08''$  (LT)  
 $D = 1^\circ 10' 22''$   
 $R = 4,885.20'$   
 $T = 101.00'$   
 $L = 201.97'$   
 $E = 1.04'$   
 $\theta = 3.10\%$   
 $T.R. = 18'$   
 $S.E. RUN = 123'$   
 $P.C. STA. = 167+55.53$   
 $P.T. STA. = 169+57.50$

PROP. CURVE P\_AR\_R1A-1  
 PI STA. = 97+77.97  
 $\Delta = 7^\circ 27' 54''$  (RT)  
 $D = 17^\circ 21' 44''$   
 $R = 330.00'$   
 $T = 21.53'$   
 $L = 42.99'$   
 $E = 0.70'$   
 $\theta = \text{---}$   
 $T.R. = \text{---}$   
 $S.E. RUN = \text{---}$   
 $P.C. STA. = 97+56.46$   
 $P.T. STA. = 97+99.45$

PROP. CURVE P\_AR\_R1A-2  
 PI STA. = 99+27.66  
 $\Delta = 22^\circ 13' 22''$  (LT)  
 $D = 17^\circ 21' 44''$   
 $R = 330.00'$   
 $T = 64.81'$   
 $L = 127.99'$   
 $E = 6.30'$   
 $\theta = \text{---}$   
 $T.R. = \text{---}$   
 $S.E. RUN = \text{---}$   
 $P.C. STA. = 98+62.85$   
 $P.T. STA. = 99+90.84$

DATE	BY
DATE	BY
DATE	BY

DATE	BY
DATE	BY
DATE	BY



§ ACCESS ROAD LT. 1A  
 PROP. CURVE P\_AR\_L1A-1  
 PI STA. = 103+18.23  
 $\Delta = 15^\circ 16' 32''$  (RT)  
 $D = 17^\circ 21' 44''$   
 $R = 330.00'$   
 $T = 44.25'$   
 $L = 87.98'$   
 $E = 2.95'$   
 $\theta = 3.94\%$   
 $T.R. = 28'$   
 $S.E. RUN = 72'$   
 $P.C. STA. = 102+73.98$   
 $P.T. STA. = 103+61.96$

§ ACCESS ROAD LT. 1A  
 PROP. CURVE P\_AR\_L1A-2  
 PI STA. = 105+07.03  
 $\Delta = 15^\circ 18' 08''$  (LT)  
 $D = 17^\circ 21' 44''$   
 $R = 330.00'$   
 $T = 44.33'$   
 $L = 88.14'$   
 $E = 2.96'$   
 $\theta = 3.94\%$   
 $T.R. = 28'$   
 $S.E. RUN = 72'$   
 $P.C. STA. = 104+62.69$   
 $P.T. STA. = 105+50.83$

§ ACCESS ROAD LT. 1A  
 PROP. CURVE P\_AR\_L1A-3  
 PI STA. = 114+02.90  
 $\Delta = 6^\circ 51' 09''$  (RT)  
 $D = 2^\circ 17' 31''$   
 $R = 2,500.00'$   
 $T = 149.68'$   
 $L = 299.00'$   
 $E = 4.48'$   
 $\theta = 1.56\%$   
 $T.R. = 27'$   
 $S.E. RUN = 27'$   
 $P.C. STA. = 112+53.22$   
 $P.T. STA. = 115+52.22$

§ F.A.P. 103  
 PROP. CURVE 1A  
 PI STA. = 196+66.19  
 $\Delta = 48^\circ 09' 12''$  (RT)  
 $D = 3^\circ 57' 05''$   
 $R = 1,450.00'$   
 $T = 647.91'$   
 $L = 1,218.63'$   
 $E = 138.17'$   
 $\theta = 6.00\%$   
 $T.R. = 36'$   
 $S.E. RUN = 240'$   
 $P.C. STA. = 190+18.28$   
 $P.T. STA. = 202+36.91$

§ F.A.P. 103  
 PROP. CURVE 1  
 PI STA. = 180+56.95  
 $\Delta = 0^\circ 01' 36''$  LT.  
 $D = 0^\circ 01' 36''$   
 $R = 214,348.22'$   
 $T = 50.00'$   
 $L = 100.00'$   
 $E = 0.01'$   
 $\theta = \text{N.C.}$   
 $P.C. STA. = 180+06.95$   
 $P.T. STA. = 181+06.95$

PROP. CURVE P\_AR\_R1A-3  
 PI STA. = 100+53.57  
 $\Delta = 15^\circ 39' 42''$  (LT)  
 $D = 16^\circ 22' 13''$   
 $R = 350.00'$   
 $T = 48.14'$   
 $L = 95.67'$   
 $E = 3.29'$   
 $\theta = \text{---}$   
 $T.R. = \text{---}$   
 $S.E. RUN = \text{---}$   
 $P.C. STA. = 100+05.43$   
 $P.T. STA. = 101+01.10$

PROP. CURVE P\_AR\_R1A-4  
 PI STA. = 103+46.19  
 $\Delta = 15^\circ 38' 06''$  (RT)  
 $D = 9^\circ 32' 57''$   
 $R = 600.00'$   
 $T = 82.38'$   
 $L = 163.73'$   
 $E = 5.63'$   
 $\theta = \text{---}$   
 $T.R. = \text{---}$   
 $S.E. RUN = \text{---}$   
 $P.C. STA. = 102+63.81$   
 $P.T. STA. = 104+27.54$

PROP. CURVE P\_AR\_R1A-5  
 PI STA. = 110+79.41  
 $\Delta = 20^\circ 56' 13''$  (RT)  
 $D = 9^\circ 32' 57''$   
 $R = 600.00'$   
 $T = 110.86'$   
 $L = 219.25'$   
 $E = 10.16'$   
 $\theta = \text{---}$   
 $T.R. = \text{---}$   
 $S.E. RUN = \text{---}$   
 $P.C. STA. = 109+68.55$   
 $P.T. STA. = 111+87.80$

REVISIONS	
NAME	DATE

ILLINOIS DEPARTMENT OF TRANSPORTATION  
 HORIZONTAL ALIGNMENT  
 SHEET 1 OF 3 SHEETS  
 F.A.P. 103 (IL. RTE. 13/15)  
 SECTION 27-1R - ST. CLAIR CO.  
 SCALE: 1" = 100'  
 DATE: February 11, 2005  
 DRAWN BY: KEB  
 CHECKED BY: RCY

