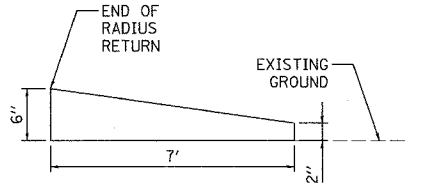


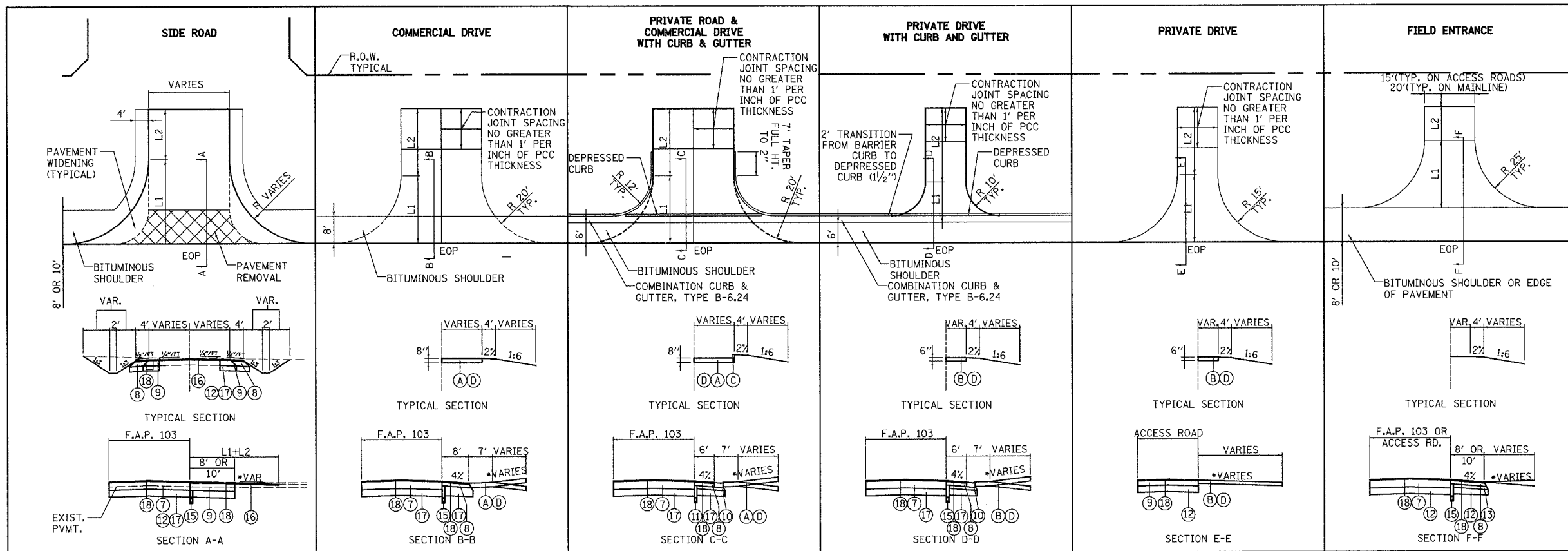
CONTRACT NO. 76300



CURB HEIGHT TRANSITION DETAIL
N.T.S.

NOTES:

- * SEE- CROSS-SECTIONS FOR ENTRANCE PROFILES.
- ** CONSTRUCT AGGREGATE SURFACE COURSE, TYPE A ON TEMPORARY CONSTRUCTION EASEMENT AT ALL EXISTING ROCK DRIVEWAYS IDENTIFIED ON THE PLANS AND ENTRANCE SCHEDULE.
- JEFFERSON RD., PEABODY RD. AND OLD FREEBURG RD. 12- 1/2" BITUMINOUS BASE COURSE WIDENING AND 2" RESURFACING ON ALL.
- LANTER LN. AND ROGERS DR. 9" BITUMINOUS PAVEMENT ON ALL (NO RESURFACING.)



ENTRANCE AND SIDEROAD SCHEDULE

TYPE	SIDE	STATION	WIDTH		LIME MODIFIED SOILS SQ. YD.	BIT. CONC. BASE CRSE. WIDENING SUPERPAVE 12 1/2" SQ. YD.	BIT. CONC. PAVEMENT SUPERPAVE 9" SQ. YD.	PREPERATION OF BASE SQ. YD.	AGGREGATE BASE COURSE TYPE B 6" TON	INCIDENTAL BITUMINOUS SURFACING SUPERPAVE, N90 TON	P.C.C. DRIVEWAY PAVEMENT 6" SQ. YD.	P.C.C. DRIVEWAY PAVEMENT 8" SQ. YD.	CONCRETE CURB TYPE B FEET	AGGREGATE SURFACE COURSE TYPE A 6" TON	AGGREGATE SURFACE COURSE TYPE B 6" TON
			L1	L2											
F.E.	LT.	154+10.61	29.0	25.0	14.5										
C.E.	RT.	163+20.00	20.0	20.0	49.4			194.4	62	21.8					
F.E.	LT.	163+77.48	20.0	25.0	11.3	**DELETED**									
F.E.	RT.	166+73.33	15.0	25.2	19.0	**DELETED**									
F.E.	RT.	178+22.72	15.0	26.8	5.6	**DELETED**									
C.E.	LT.	178+54.19	18.0	28.0	2.3	85.8		85.8		90.3			1.5	29.4	
C.E.	RT.	178+99.55	33.0	27.2	39.7	147.5		147.5		273.8			41.2		
P.E.	LT.	182+50.58	10.0	22.0	47.8			79.4	8.3	2.9			17.3	32.7	
P.E.	RT.	182+79.85	11.0	20.8	8.1			52.3	16.6	5.9				64.6	
F.E.	LT.	187+51.84	15.0	25.0	7.0									72.1	
P.E.	LT.	188+36.16	12.0	25.0	20.0			103.7	24.5	8.7			8.6		
C.E.	RT.	188+56.27	24.0	28.0	26.0	154.8		154.8		231.0			24.9	103.6	
C.E.	LT.	190+41.96	12.0	20.0	39.2			97.9	31.0	11.0				72.0	
F.E.	LT.	191+98.00	15.0	24.8	8.9										
F.E.	RT.	192+80.75	20.0	25.0	30.7	**DELETED**									
S.R.	LT.	206+36.83	26.0	75.0	12.0	175.0	175.0			68.0					
F.E.	LT.	214+50.00	20.0	25.0	32.6									60.1	
P.E.	RT.	215+89.53	18.0	62.0	86.0			198.2					64.7		
P.E.	RT.	217+30.84	10.0	N/A	148.0			198.0					64.7	72.9	
C.E.	LT.	219+25.01	13.0	29.0	12.0			122.9	38.9	13.8				68.2	
P.E.	LT.	220+98.15	21.0	25.0	25.6			86.0	22.1	7.8			5.3	35.8	
F.E.	LT.	225+04.43	15.0	24.7	14.3										
F.E.	LT.	227+30.63	15.0	24.7	32.2										
F.E.	LT.	230+39.84	15.0	18.5	N/A									100.1	
P.E.	RT.	232+13.25	20.0	30.0	149.5			440.1	45.9	16.2			96.3	40.0	
F.E.	LT.	234+38.05	15.0	39.5	10.8										
P.E.	LT.	237+30.24	15.0	20.0	24.7			92.3	22.1	7.8			7.3	94.9	
F.E.	LT.	241+32.23	15.0	25.0	4.8										
F.E.	LT.	244+98.83	15.0	25.0	4.8										
P.E.	LT.	248+04.26	18.0	28.0	17.0	85.8		85.8		110.3			8.0	72.2	
F.E.	LT.	248+49.47	15.0	25.0											
P.E.	RT.	254+13.39	18.0	30.4	93.2			261.5	29.5	10.4			54.9	66.1	
P.E.	RT.	254+53.63	12.0	36.5	82.6			165.3	19.8	7.0			33.5		
P.E.	RT.	258+06.94	12.0	27.0	22.5			85.1	17.4	6.2			9.8	25.8	
P.E.	RT.	258+97.91	18.0	28.0	N/A	85.8		85.8		85.8				20.3	
P.E.	RT.	260+73.21	12.0	133.5	N/A			165.3					53.9		
F.E.	LT.	265+34.54	20.0	25.0	12.3									19.2	
P.E.	LT.	268+22.05	12.0	20.0	23.9			77.6	24.6	8.7				30.1	
P.E.	LT.	270+02.20	11.0	42.6	N/A			109.3	17.3	6.1			17.8		
P.E.	LT.	270+58.43	11.0	20.0	2.0			90.3	14.3	5.1			14.7	38.6	
P.E.	LT.	271+50.05	12.0	166.4	N/A			166.8					54.4		
F.E.	LT.	272+05.61	18.0	28.0	N/A	85.8		85.8							
P.E.	LT.	274+76.03	10.0	21.0	21.1			56.3	17.8	6.3					
P.E.	RT.	277+33.76	12.0	71.8	47.6			352.0	84.7	30.0			27.5	43.3	
F.E.	RT.	BORDERLINE	15.0	25.0	N/A										
F.E.	LT.	JEFFERSON RD.	15.0	25.0											
TOTAL (RURAL)					821	175	646	4072	497	244	0	0	0	606	1162

LEGEND

- (A) PROPOSED P.C.C. DRIVEWAY PAVEMENT, 8"
- (B) PROPOSED P.C.C. DRIVEWAY PAVEMENT, 6"
- (C) CONCRETE CURB, TYPE B
- (D) AGGREGATE BASE COURSE TYPE B-6" WITH INCIDENTAL BITUMINOUS SURFACING, 2"
- (7) PROPOSED BITUMINOUS CONCRETE PAVEMENT (FULL-DEPTH), 14"
- (8) PROPOSED BITUMINOUS SHOULDERS, 8"
- (9) PROPOSED BITUMINOUS CONCRETE BASE COURSE WIDENING, 12-1/2"
- (10) PROPOSED COMBINATION CONCRETE CURB AND GUTTER, TYPE B-6-24
- (12) PROPOSED LIME MODIFICATION - 12"
- (13) PROPOSED SUBBASE GRANULAR MATERIAL, TYPE C
- (15) PROPOSED PIPE UNDERDRAINS
- (16) PROPOSED INCIDENTAL BITUMINOUS SURFACING, 2"
- (17) PROPOSED SUBBASE GRANULAR MATERIAL, TYPE B
- (18) PROPOSED BITUMINOUS MATERIALS (PRIME COAT) WITH AGGREGATE (PRIME COAT)
- ** (19) PROPOSED AGGREGATE SURFACE COURSE, TYPE A - 6"

NOTE: ALL BITUMINOUS MATERIALS WILL CONFORM TO CURRENT IDOT SUPERPAVE MIXTURE DESIGN

REVISIONS	DATE
NAME	

ILLINOIS DEPARTMENT OF TRANSPORTATION
MISCELLANEOUS SCHEDULES
SHEET 4 OF 11 SHEETS
F.A.P. 103 (IL. RTE. 13/15)
SECTION 27-1R - ST. CLAIR CO.