

SQUAD LEADER: JEFF MYERS (217)524-7940

PROJECT ENGINEER: SAL MADONIA (217)782-4761

PROJECT: D651505 FILE: SHITCOVER.DGN

F.A.P. RTE.	SECTION	COUNTY	TOTAL SHEETS	SHEET NO.
663	(17X)TS-1	SANGAMON	10	1

D-96-515-05

STATE OF ILLINOIS  
DEPARTMENT OF TRANSPORTATION  
DIVISION OF HIGHWAYS

# PROPOSED HIGHWAY PLANS

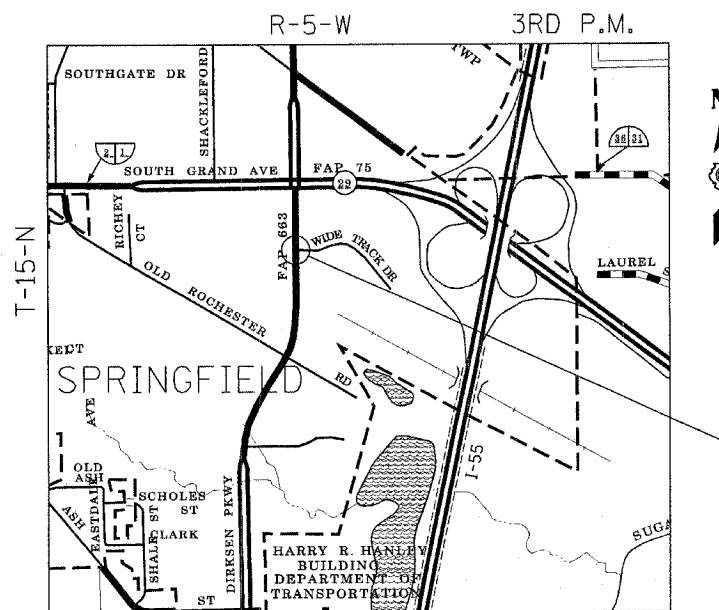
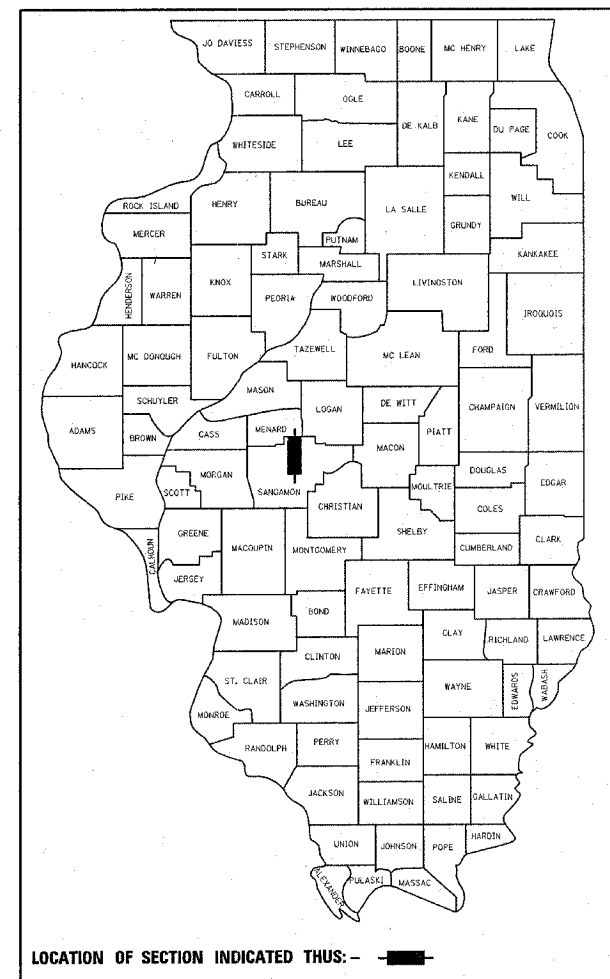
FAP ROUTE 663 (DIRKSEN PARKWAY)  
SECTION (17X)TS-1  
~~PROJECT~~  
TRAFFIC SIGNAL INSTALLATION  
SANGAMON COUNTY  
C-96-516-05

### INDEX OF SHEETS

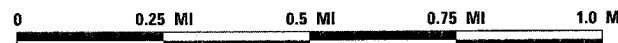
1. COVER SHEET
2. GENERAL NOTES
3. SUMMARY OF QUANTITIES
- 4-5. PROPOSED PLAN SHEETS
6. PROPOSED CABLE DIAGRAM
7. VIDEO DETECTION SYSTEM INSTALLATION DETAIL
8. TRAFFIC SIGNAL LEGEND
- 9-10. PROPOSED SIGN DETAILS

### HIGHWAY STANDARDS

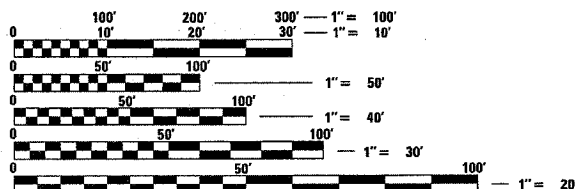
000001-04	701602-02
701001-01	702001-05
701006-02	720016-01
701101-01	805001
701106-01	814001
701301-02	814006
701311-02	857001
701426-02	877001-02
701501-03	880006



STA 404+50  
INTERSECTION OF  
FAP 663 (DIRKSEN PKWY)  
AND WIDE TRACK DRIVE



LOCATION MAP



FULL SIZE PLANS HAVE BEEN PREPARED USING STANDARD ENGINEERING SCALES. REDUCED SIZED PLANS WILL NOT CONFORM TO STANDARD SCALES. IN MAKING MEASUREMENTS ON REDUCED PLANS, THE ABOVE SCALES MAY BE USED.

J.U.L.I.E.  
JOINT UTILITY LOCATION INFORMATION FOR EXCAVATION  
1-800-892-0123

CONTRACT NO. 72963

GROSS LENGTH OF PROJECT = 127 FEET 0.02 MILES  
NET LENGTH OF PROJECT = 127 FEET 0.02 MILES

STATE OF ILLINOIS  
DEPARTMENT OF TRANSPORTATION  
DIVISION OF HIGHWAYS

SUBMITTED April 1, 2005

Chris M. Reed  
DEPUTY DIRECTOR OF HIGHWAYS, REGION ENGINEER

May 13, 2005  
Mike Hine  
ENGINEER OF DESIGN AND ENVIRONMENT

May 13, 2005  
Victor Madonia  
DIRECTOR OF HIGHWAYS, CHIEF ENGINEER

PRINTED BY THE AUTHORITY  
OF THE STATE OF ILLINOIS

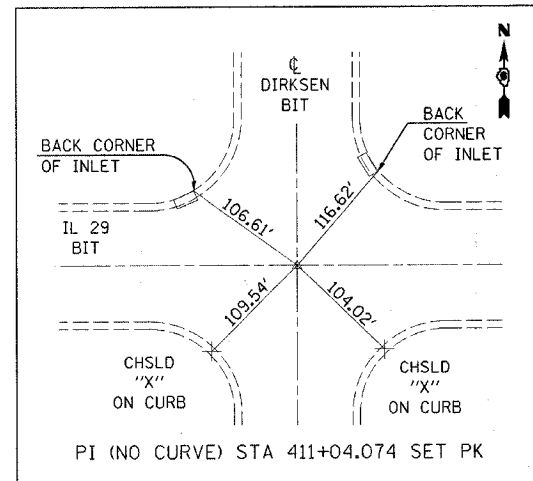
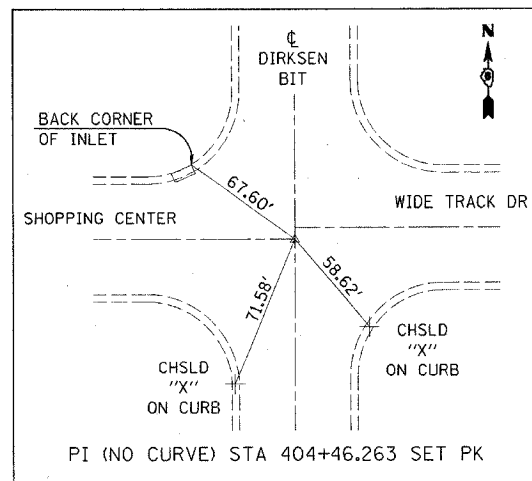
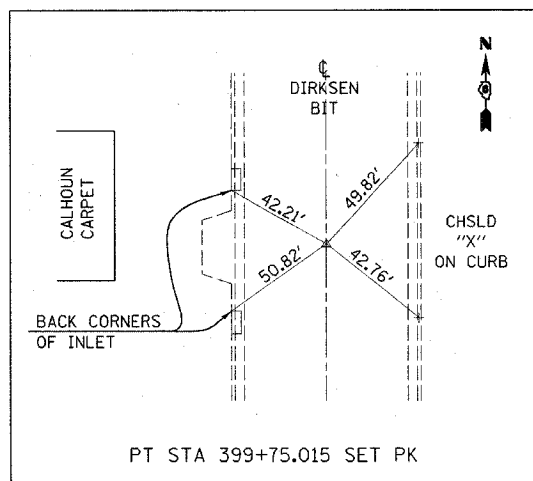
F.A.P. RTE.	SECTION	COUNTY	TOTAL SHEETS	SHEET NO.
663	(17X)TS-1	SANGAMON	10	2
STA.		TO STA.		
FED. ROAD DIST. NO.		ILLINOIS	FED. AID PROJECT	

GENERAL NOTES

- 1) THE CONTRACTOR SHALL BE RESPONSIBLE FOR PROTECTING UTILITY PROPERTY FROM CONSTRUCTION OPERATIONS AS OUTLINED IN ARTICLE 107.31 OF THE STANDARD SPECIFICATIONS. IT SHALL BE THE CONTRACTOR'S RESPONSIBILITY TO COORDINATE OPERATIONS WITH THE VARIOUS UTILITY COMPANIES. THE J.U.L.I.E. NUMBER IS 1-800-892-0123
- 2) WHERE SECTION OR SUBSECTION MONUMENTS ARE ENCOUNTERED, THE ENGINEER SHALL BE NOTIFIED BEFORE SUCH MONUMENTS ARE REMOVED. THE CONTRACTOR SHALL PROTECT AND CAREFULLY PRESERVE ALL PROPERTY MARKERS AND MONUMENTS UNTIL THE OWNER, AN AUTHORIZED SURVEYOR OR AGENT HAS WITNESSED OR OTHERWISE REFERENCED THEIR LOCATION.
- 3) ACCESS TO ALL ENTRANCES AND SIDEROADS SHALL BE MAINTAINED AT ALL TIMES.
- 4) ANY REFERENCE TO A STANDARD IN THESE PLANS SHALL BE INTERPRETED TO MEAN THE EDITION AS INDICATED BY THE SUB-NUMBERS LISTED IN THE INDEX OF SHEETS, OR THE COPY OF THE STANDARD INCLUDED IN THESE PLANS.
- 5) ALL STATION REFERENCES ARE TO THE ROADWAY CENTERLINE OR BASELINE.

COMMITMENTS

THERE ARE NO COMMITMENTS ON THE PROJECT.



CROSS TIES

DISTRICT SIX	
EXAMINED	March 15 20 05
<i>David H. Hays</i>	
OPERATIONS ENGINEER	

EXAMINED	Mar 7 20 05
<i>W.R. Jones</i>	
PROGRAM IMPLEMENTATION ENGINEER	
EXAMINED	April 1 20 05
<i>William E. Hays</i>	
PROGRAM DEVELOPMENT ENGINEER	

REVISIONS	
NAME	DATE

ILLINOIS DEPARTMENT OF TRANSPORTATION  
 GENERAL NOTES  
 FAP 663 (Dirksen Parkway)  
 Section: (17X)TS-1  
 Sangamon County  
 SCALE: NA  
 DATE \*\*DATE\*\*  
 DRAWN BY  
 CHECKED BY

F.A.P. RTE.	SECTION	COUNTY	TOTAL SHEETS	SHEET NO.
663	(17X)TS-1	SANGAMON	10	3

ILLINOIS DEPARTMENT OF TRANSPORTATION  
SUMMARY OF QUANTITIES

STA.	TO STA.
FED. ROAD DIST. NO.	ILLINOIS FED. AID PROJECT

SUMMARY OF QUANTITIES				URBAN 95% STATE 5% CITY
CODE NO.	PAY ITEM	CONSTRUCTION TYPE		CODE
		UNITS	TOTAL	Y031-1F
8130600	JUNCTION BOX, SPECIAL	EACH	1	1
* 66900200	<del>NON-SPECIAL WASTE DISPOSAL</del>	<del>CU. YD.</del>	<del>5</del>	<del>5</del>
67100100	MOBILIZATION	L SUM	1	1
* 66900450	<del>SPECIAL WASTE PLANS AND REPORTS</del>	<del>L SUM</del>	<del>1</del>	<del>1</del>
70102620	TRAFFIC CONTROL AND PROTECTION, STANDARD 701501	L SUM	1	1
* 66900510	<del>BETK-PNAS SOIL ANALYSIS</del>	<del>EACH</del>	<del>2</del>	<del>2</del>
70102632	TRAFFIC CONTROL AND PROTECTION, STANDARD 701602	L SUM	1	1
* 66900530	<del>SOIL DISPOSAL ANALYSIS</del>	<del>EACH</del>	<del>2</del>	<del>2</del>
* 72000200	SIGN PANEL - TYPE 2	SQ FT	55.0	55.0
* 78000650	THERMOPLASTIC PAVEMENT MARKING - LINE 24"	FOOT	92.0	92.0
80500100	SERVICE INSTALLATION, TYPE A	EACH	1	1
80801400	WOOD POLE, 25 FT., CLASS 4	EACH	1	1
81012500	CONDUIT IN TRENCH, 1 1/2" DIA., PVC	FOOT	534.0	534.0
81012600	CONDUIT IN TRENCH, 2" DIA., PVC	FOOT	20.0	20.0
81012800	CONDUIT IN TRENCH, 3" DIA., PVC	FOOT	76.0	76.0
81013000	CONDUIT IN TRENCH, 4" DIA., PVC	FOOT	16.0	16.0
81021570	CONDUIT, AUGERED 3" DIA., PVC	FOOT	166.0	166.0
81021590	CONDUIT, AUGERED 4" DIA., PVC	FOOT	117.0	117.0
81400100	HANDHOLE	EACH	3	3
81400300	DOUBLE HANDHOLE	EACH	1	1
81500200	TRENCH AND BACKFILL FOR ELECTRICAL WORK	FOOT	646.0	646.0
82104250	LUMINAIRE, SODIUM VAPOR, MULTI-MOUNT, PHOTO-CELL CONTROL, 250 WATT	EACH	4	4
85700200	FULL-ACTUATED CONTROLLER AND TYPE IV CABINET	EACH	1	1
86400100	TRANSCEIVER - FIBER OPTIC	EACH	1	1
87100110	FIBER OPTIC CABLE IN CONDUIT, NO. 62.5/125, 6F	FOOT	665.0	665.0
87301245	ELECTRIC CABLE IN CONDUIT, SIGNAL NO. 14 5C	FOOT	476.0	476.0
87301255	ELECTRIC CABLE IN CONDUIT, SIGNAL NO. 14 7C	FOOT	941.5	941.5

SUMMARY OF QUANTITIES				URBAN 95% STATE 5% CITY
CODE NO.	PAY ITEM	CONSTRUCTION TYPE		CODE
		UNITS	TOTAL	Y031-1F
87301265	ELECTRIC CABLE IN CONDUIT, SIGNAL NO. 14 9C	FOOT	181.5	181.5
87301275	ELECTRIC CABLE IN CONDUIT, SIGNAL NO. 14 12C	FOOT	477.5	477.5
87301525	ELECTRIC CABLE IN CONDUIT, LEAD-IN, NO. 18 6 PAIR	FOOT	810.0	810.0
87301815	ELECTRIC CABLE IN CONDUIT, SERVICE, NO. 6 3 C	FOOT	16.0	16.0
87502700	TRAFFIC SIGNAL POST, ALUMINUM 16 FT.	EACH	3	3
87702920	STEEL COMBINATION MAST ARM ASSEMBLY AND POLE 38 FT.	EACH	1	1
87702940	STEEL COMBINATION MAST ARM ASSEMBLY AND POLE 42 FT.	EACH	3	3
87800100	CONCRETE FOUNDATION, TYPE A	FOOT	9.0	9.0
87800200	CONCRETE FOUNDATION, TYPE D	FOOT	3.0	3.0
87800415	CONCRETE FOUNDATION, TYPE E 36-INCH DIAMETER	FOOT	50.0	50.0
87900200	DRILL EXISTING HANDHOLE	EACH	1	1
88200100	TRAFFIC SIGNAL BACKPLATE	EACH	17	17
X0320872	VIDEO VEHICLE DETECTION SYSTEM	EACH	1	1
X8170245	ELECTRIC CABLE IN CONDUIT, 600V (XLP-TYPE USE) 3-1/C NO. 12	FOOT	810.0	810.0
X8801300	SIGNAL HEAD, POLYCARBONATE, LED, 1-FACE, 3-SECTION, BRACKET MOUNTED	EACH	2	2
X8801310	SIGNAL HEAD, POLYCARBONATE, LED, 1-FACE, 3-SECTION, MAST ARM MOUNTED	EACH	4	4
X8801350	SIGNAL HEAD, POLYCARBONATE, LED, 1-FACE, 4-SECTION, MAST ARM MOUNTED	EACH	2	2
X8801400	SIGNAL HEAD, POLYCARBONATE, LED, 1-FACE, 5-SECTION, MAST ARM MOUNTED	EACH	3	3
X8801435	SIGNAL HEAD, POLYCARBONATE, LED, 2-FACE, 1-3 SECTION, 1-4 SECTION, BRACKET MOUNTED	EACH	1	1
X8801437	SIGNAL HEAD, POLYCARBONATE, LED, 2-FACE, 1-3-SECTION, 1-5-SECTION, BRACKET MOUNTED	EACH	1	1
X8801445	SIGNAL HEAD, POLYCARBONATE, LED, 2-FACE, 1-4 SECTION, 1-5 SECTION, BRACKET MOUNTED	EACH	1	1
X8801447	SIGNAL HEAD, POLYCARBONATE, LED, 2-FACE, 5-SECTION, BRACKET MOUNTED	EACH	1	1
X8801395	SIGNAL HEAD, POLYCARBONATE, LED, 1-FACE, 5-SECTION, BRACKET MOUNTED	EACH	1	1

\* SPECIALTY ITEMS

PLOT DATE = 3/31/2005  
FILE NAME = c:\projects\72963\72963.dwg  
PLOT SCALE = 1/8" = 1'-0"  
REFERENCE = 0

REVISIONS	
NAME	DATE

ILLINOIS DEPARTMENT OF TRANSPORTATION  
SUMMARY OF QUANTITIES  
FAP 663 (Dirksen Parkway)  
Section: (17X)TS-1  
Sangamon County

Rev.

SCALE: NA  
DATE: \*\*DATE\*\*

DRAWN BY  
CHECKED BY

F.A.P. RTE.	SECTION	COUNTY	TOTAL SHEETS	SHEET NO.
663	(17X)TS-1	SANGAMON	10	4
STA.		TO STA.		
FED. ROAD DIST. NO.		ILLINOIS	FED. AID PROJECT	

TRAFFIC SIGNAL QUANTITIES

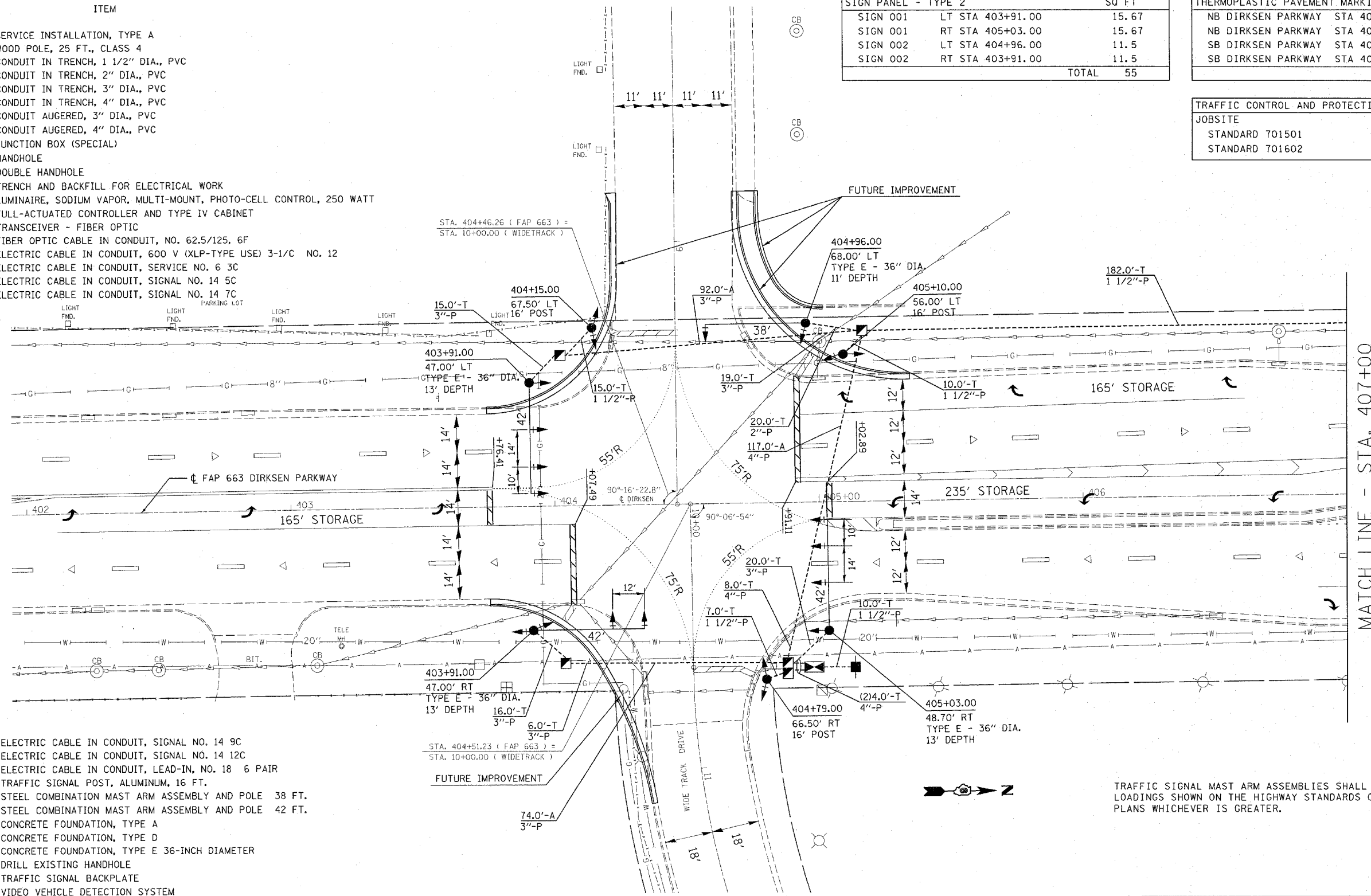
LOCATION: DIRKSEN PKWY & WIDE TRACK DR

QUANTITY	UNIT	ITEM
1	EACH	SERVICE INSTALLATION, TYPE A
1	EACH	WOOD POLE, 25 FT., CLASS 4
534.0	FOOT	CONDUIT IN TRENCH, 1 1/2" DIA., PVC
20.0	FOOT	CONDUIT IN TRENCH, 2" DIA., PVC
76.0	FOOT	CONDUIT IN TRENCH, 3" DIA., PVC
16.0	FOOT	CONDUIT IN TRENCH, 4" DIA., PVC
166.0	FOOT	CONDUIT AUGERED, 3" DIA., PVC
117.0	FOOT	CONDUIT AUGERED, 4" DIA., PVC
1	EACH	JUNCTION BOX (SPECIAL)
3	EACH	HANDHOLE
1	EACH	DOUBLE HANDHOLE
646.0	FOOT	TRENCH AND BACKFILL FOR ELECTRICAL WORK
4	EACH	LUMINAIRE, SODIUM VAPOR, MULTI-MOUNT, PHOTO-CELL CONTROL, 250 WATT
1	EACH	FULL-ACTUATED CONTROLLER AND TYPE IV CABINET
1	EACH	TRANSCIEVER - FIBER OPTIC
665.0	FOOT	FIBER OPTIC CABLE IN CONDUIT, NO. 62.5/125, 6F
810.0	FOOT	ELECTRIC CABLE IN CONDUIT, 600 V (XLP-TYPE USE) 3-1/C NO. 12
16.0	FOOT	ELECTRIC CABLE IN CONDUIT, SERVICE NO. 6 3C
476.0	FOOT	ELECTRIC CABLE IN CONDUIT, SIGNAL NO. 14 5C
941.5	FOOT	ELECTRIC CABLE IN CONDUIT, SIGNAL NO. 14 7C

SIGN PANEL - TYPE 2		SQ FT
SIGN 001	LT STA 403+91.00	15.67
SIGN 001	RT STA 405+03.00	15.67
SIGN 002	LT STA 404+96.00	11.5
SIGN 002	RT STA 403+91.00	11.5
TOTAL		55

THERMOPLASTIC PAVEMENT MARKING - LINE 24" FOOT		FOOT
NB DIRKSEN PARKWAY	STA 403+76.41	14
NB DIRKSEN PARKWAY	STA 404+07.49	28
SB DIRKSEN PARKWAY	STA 404+91.11	14
SB DIRKSEN PARKWAY	STA 405+02.89	36
TOTAL		92

TRAFFIC CONTROL AND PROTECTION		L	SUM
JOBSITE			
STANDARD 701501		1	
STANDARD 701602		1	



MATCH LINE - STA. 407+00

181.5	FOOT	ELECTRIC CABLE IN CONDUIT, SIGNAL NO. 14 9C
477.5	FOOT	ELECTRIC CABLE IN CONDUIT, SIGNAL NO. 14 12C
810.0	FOOT	ELECTRIC CABLE IN CONDUIT, LEAD-IN, NO. 18 6 PAIR
3	EACH	TRAFFIC SIGNAL POST, ALUMINUM, 16 FT.
1	EACH	STEEL COMBINATION MAST ARM ASSEMBLY AND POLE 38 FT.
3	EACH	STEEL COMBINATION MAST ARM ASSEMBLY AND POLE 42 FT.
9.0	FOOT	CONCRETE FOUNDATION, TYPE A
3.0	FOOT	CONCRETE FOUNDATION, TYPE D
50.0	FOOT	CONCRETE FOUNDATION, TYPE E 36-INCH DIAMETER
1	EACH	DRILL EXISTING HANDHOLE
17	EACH	TRAFFIC SIGNAL BACKPLATE
1	EACH	VIDEO VEHICLE DETECTION SYSTEM
4	EACH	SIGNAL HEAD, POLYCARBONATE, LED, 1-FACE, 3-SECTION, MAST ARM MOUNTED
2	EACH	SIGNAL HEAD, POLYCARBONATE, LED, 1-FACE, 4-SECTION, MAST ARM MOUNTED
3	EACH	SIGNAL HEAD, POLYCARBONATE, LED, 1-FACE, 5-SECTION, MAST ARM MOUNTED
3	EACH	SIGNAL HEAD, POLYCARBONATE, LED, 1-FACE, 3-SECTION, BRACKET MOUNTED
1	EACH	SIGNAL HEAD, POLYCARBONATE, LED, 2-FACE, 1-3 SECTION, 1-4 SECTION, BRACKET MOUNTED
1	EACH	SIGNAL HEAD, POLYCARBONATE, LED, 2-FACE, 1-3 SECTION, 1-5 SECTION, BRACKET MOUNTED
1	EACH	SIGNAL HEAD, POLYCARBONATE, LED, 2-FACE, 1-4 SECTION, 1-5 SECTION, BRACKET MOUNTED
1	EACH	SIGNAL HEAD, POLYCARBONATE, LED, 2-FACE, 5-SECTION, BRACKET MOUNTED
1	EACH	SIGNAL HEAD, POLYCARBONATE, LED, 1-FACE, 5-SECTION, BRACKET MOUNTED

TRAFFIC SIGNAL MAST ARM ASSEMBLIES SHALL BE DESIGNED FOR THE LOADINGS SHOWN ON THE HIGHWAY STANDARDS OR THESE SIGNAL PLANS WHICHEVER IS GREATER.

REVISIONS	
NAME	DATE

ILLINOIS DEPARTMENT OF TRANSPORTATION  
**PROPOSED TRAFFIC SIGNALS**  
 DIRKSEN PKWY & WIDE TRACK DR  
 SANGAMON COUNTY

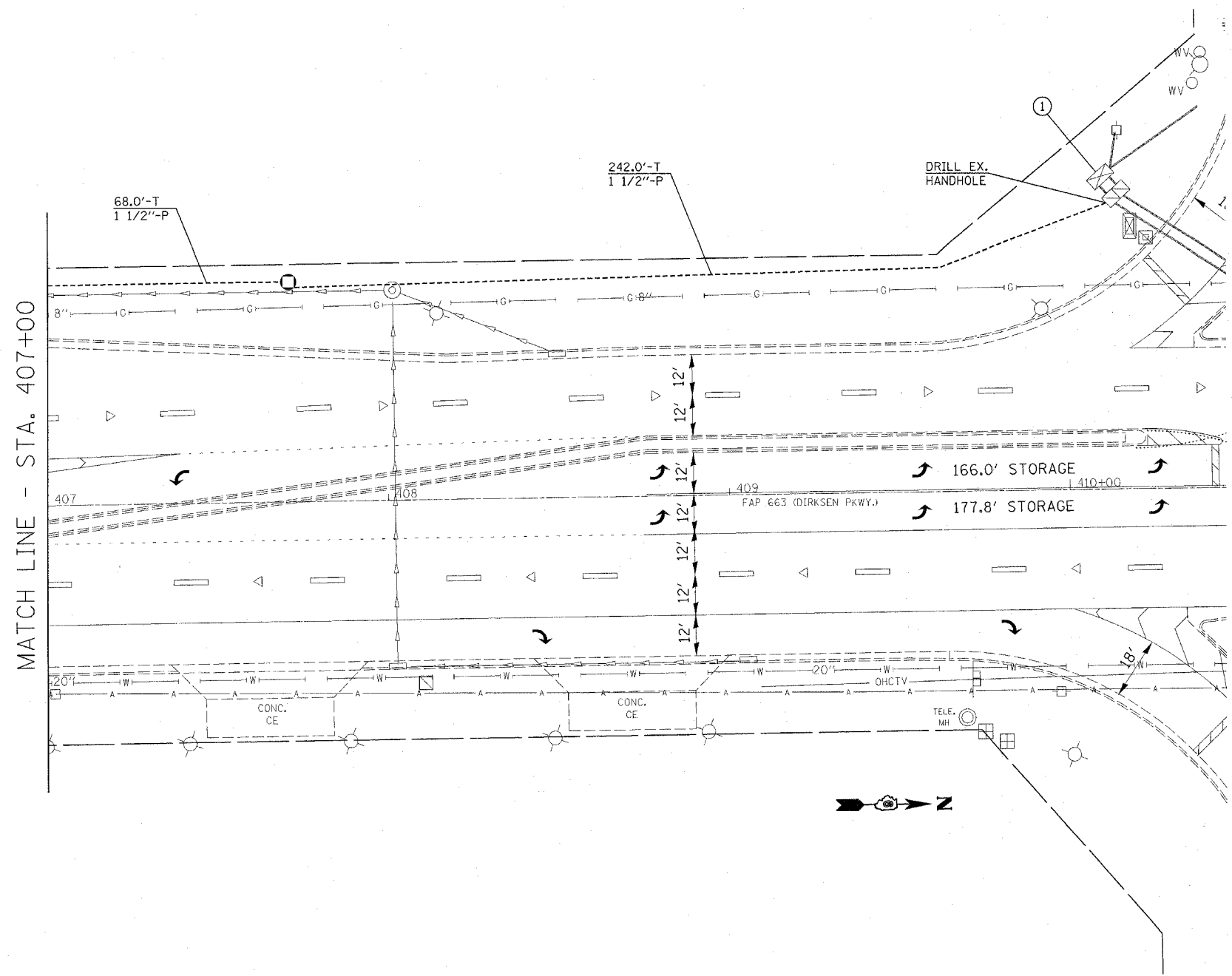
SCALE: 1" = 20'  
 DATE FEB 2005

DRAWN BY KDA  
 CHECKED BY

PLOT DATE = 3/31/2005  
 PLOT SCALE = 20,000.00 / IN.  
 REFERENCE = #REF#

Rev.

F.A.P. RTE.	SECTION	COUNTY	TOTAL SHEETS	SHEET NO.
663	(17X)TS-1	SANGAMON	10	5
STA.		TO STA.		
FED. ROAD DIST. NO.		ILLINOIS	FED. AID PROJECT	



TRAFFIC SIGNAL NOTES:

- 1.) INSTALL PROPOSED FIBER OPTIC INTERCONNECT FROM PROPOSED CONTROLLER AT WIDE TRACK DR TO EXISTING CONTROLLER CABINET AT DIRKSEN & SOUTH GRAND. INSTALL CUBE TAP TO ALLOW FOR COMMUNICATIONS WITH EXISTING MASTER CONTROLLER AT COOK ST.

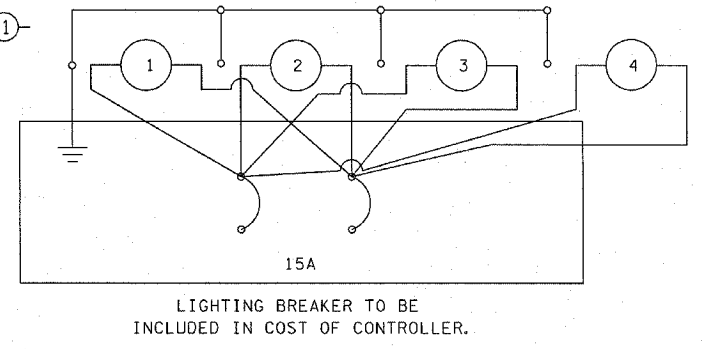
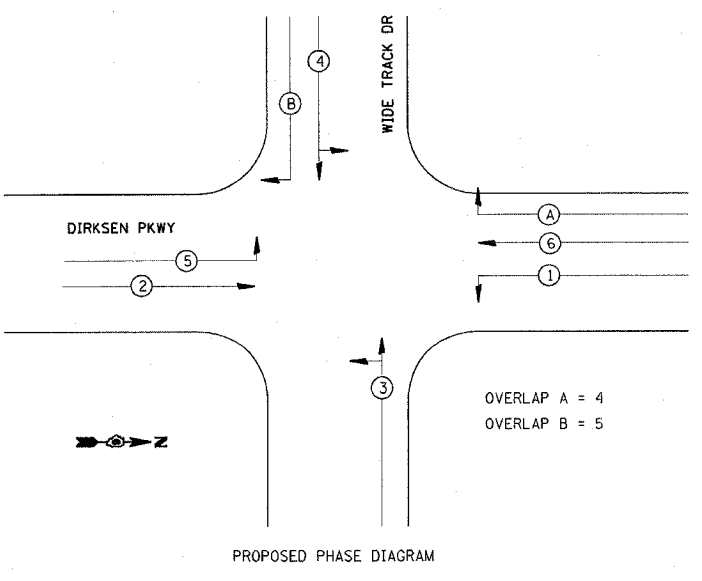
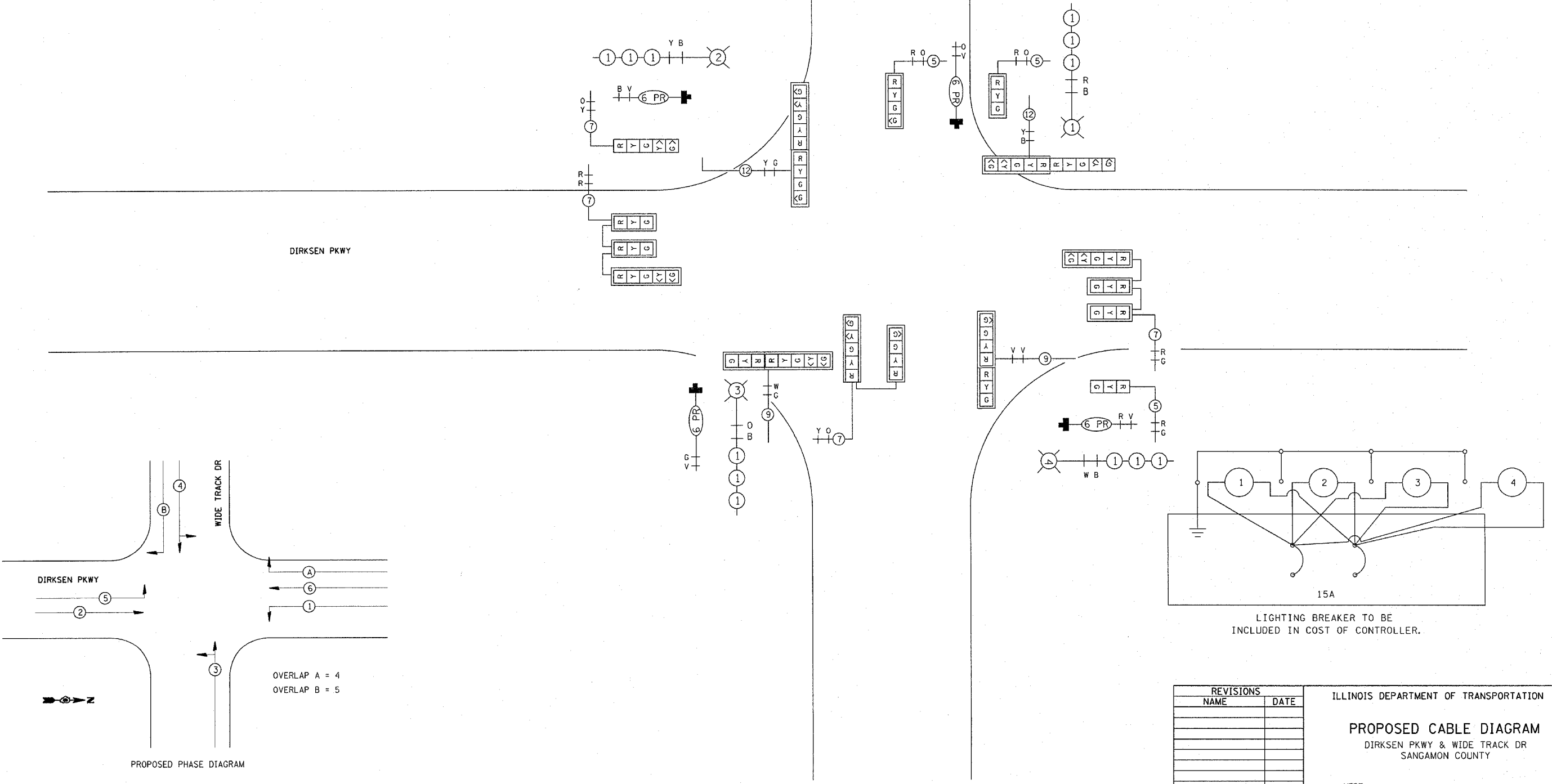
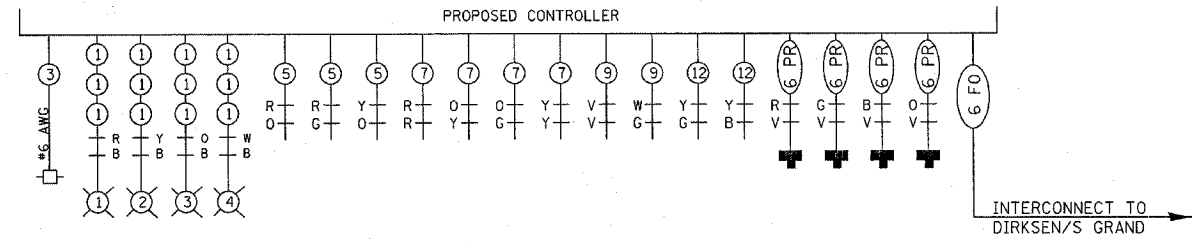
PLOT DATE = 3/31/2005  
 PLOT SCALE = 20.0000 / IN.  
 REFERENCE = #REF#

REVISIONS	
NAME	DATE

ILLINOIS DEPARTMENT OF TRANSPORTATION  
**PROPOSED TRAFFIC SIGNALS**  
 DIRKSEN PKWY & WIDE TRACK DR  
 SANGAMON COUNTY

SCALE: 1" = 20'  
 DATE FEB 2005  
 DRAWN BY: KDA  
 CHECKED BY:

F.A.P. RTE.	SECTION	COUNTY	TOTAL SHEETS	SHEET NO.
663	(17X)TS-1	SANGAMON	10	6
STA.		TO STA.		
FED. ROAD DIST. NO.	ILLINOIS	FED. AID PROJECT		



REVISIONS	
NAME	DATE

ILLINOIS DEPARTMENT OF TRANSPORTATION

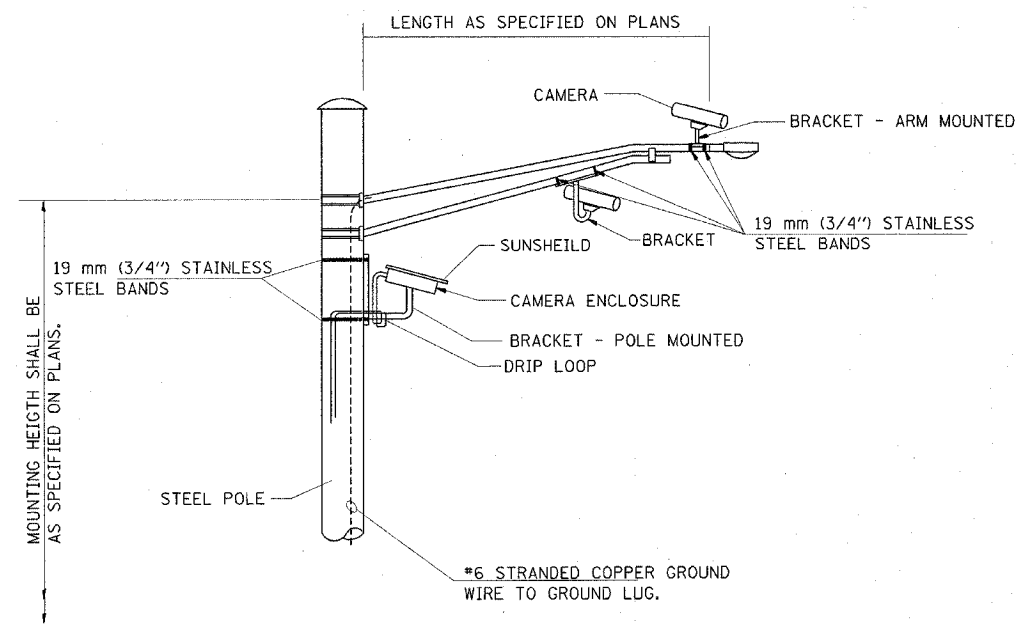
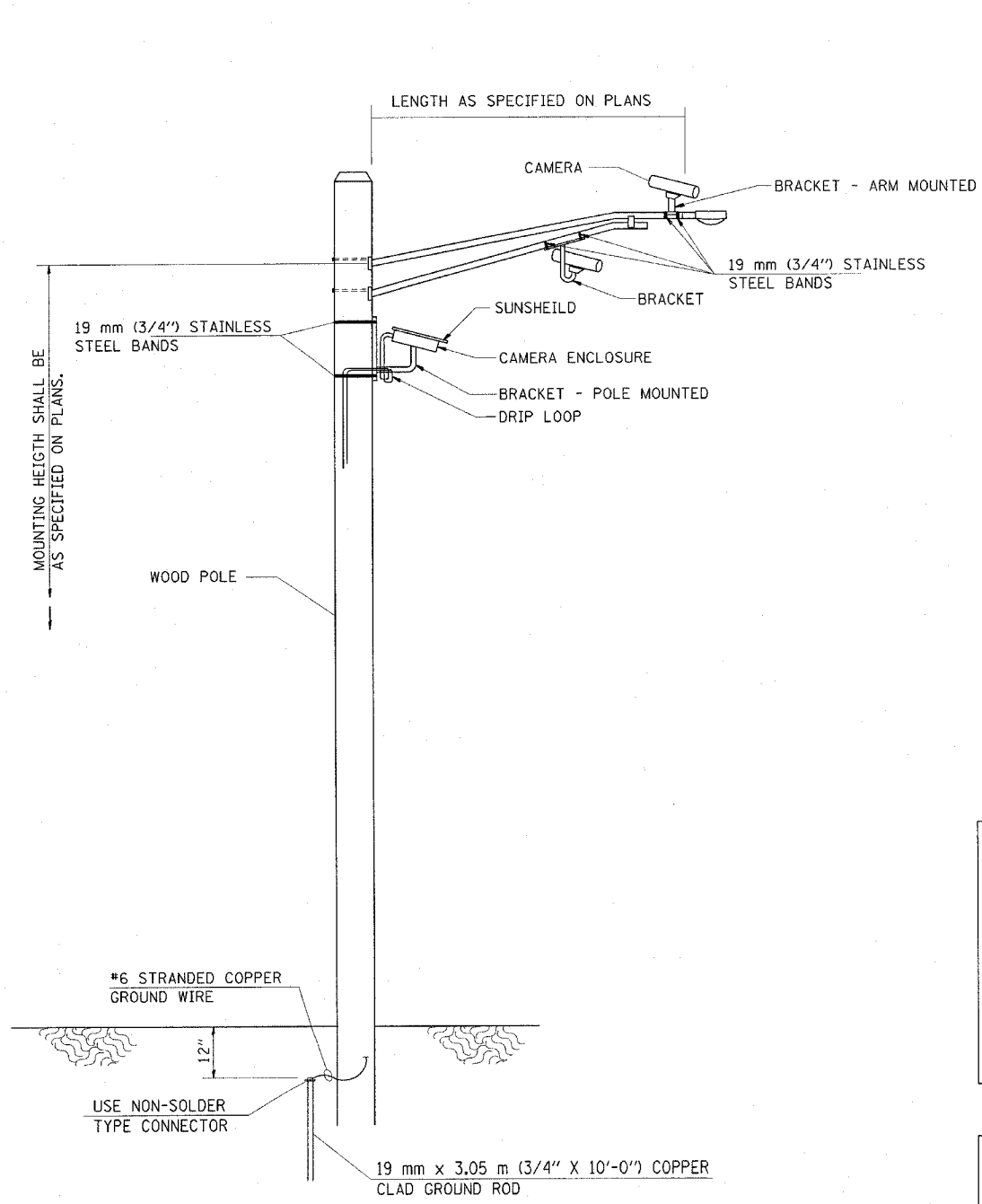
**PROPOSED CABLE DIAGRAM**

DIRKSEN PKWY & WIDE TRACK DR  
SANGAMON COUNTY

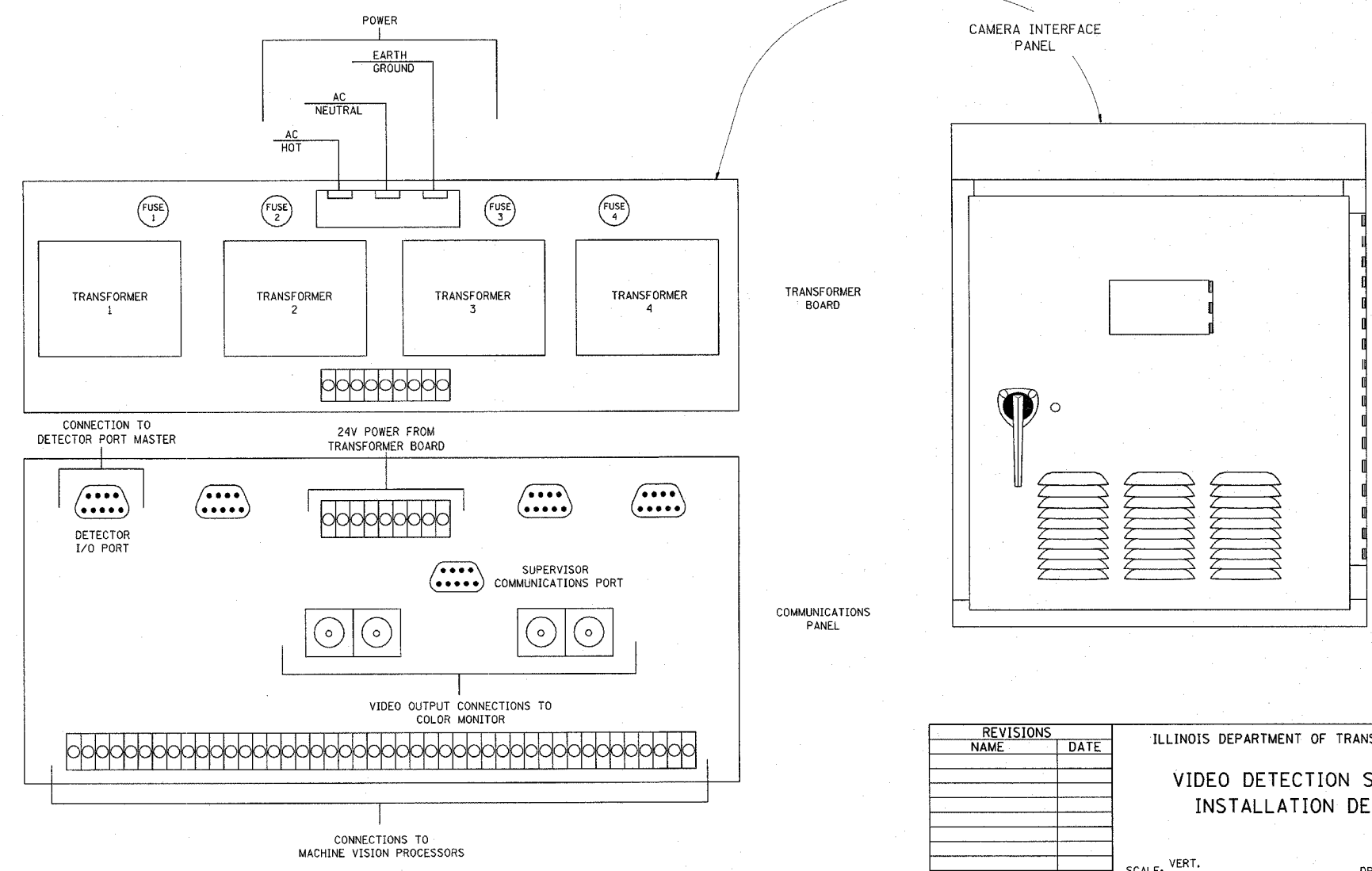
SCALE: VERT.     DRAWN BY KDA  
 HORIZ.            CHECKED BY  
 DATE FEB 2005

PLOT DATE = 3/31/2005  
 FILE NAME = \\s1515605\ts-sherrod\dwg  
 PLOT SCALE = 20,000% / IN.  
 REFERENCE = #REF#

F.A.P. RTE.	SECTION	COUNTY	TOTAL SHEETS	SHEET NO.
663	(17X)TS-1	SANGAMON	10	7
STA.		TO STA.		
FED. ROAD DIST. NO.	ILLINOIS	FED. AID PROJECT		



**VIDEO DETECTION SYSTEM INSTALLATION  
ARM MOUNTED OR POLE MOUNTED CAMERA**



REVISIONS	
NAME	DATE

ILLINOIS DEPARTMENT OF TRANSPORTATION  
**VIDEO DETECTION SYSTEM  
INSTALLATION DETAIL**

SCALE: VERT. \_\_\_\_\_  
HORIZ. \_\_\_\_\_  
DATE \_\_\_\_\_  
DRAWN BY: KDA  
CHECKED BY: \_\_\_\_\_

PLOT DATE = 3/31/2005  
PLOT SCALE = 20/8000  
REFERENCE = #REF#

F.A.P. RTE.	SECTION	COUNTY	TOTAL SHEETS	SHEET NO.
663	(17X)TS-1	SANGAMON	10	8
STA.		TO STA.		
FED. ROAD DIST. NO.	ILLINOIS	FED. AID PROJECT		

**TRAFFIC SIGNAL PLAN LEGEND**

EXISTING	PROPOSED	DESCRIPTION
		SIGNAL HEAD
		SIGNAL HEAD WITH BACKPLATE
		TEMPORARY SIGNAL HEAD
		PEDESTRIAN SIGNAL HEAD
		PEDESTRIAN PUSHBUTTON DETECTOR
		DETECTOR LOOP
		QUADRAPOLE DETECTOR LOOP
		SIGNAL POST
		ALUMINUM MAST ARM ASSEMBLY AND POLE
		STEEL MAST ARM ASSEMBLY AND POLE
		WOOD POLE
		WOOD POLE WITH GUY
		SERVICE INSTALLATION
		CONTROLLER
		HANDHOLE
		HEAVY DUTY HANDHOLE
		DOUBLE HANDHOLE
		JUNCTION BOX
		GULFBOX JUNCTION
		AERIAL CABLE
		CONDUIT LENGTH - CONSTRUCTION (T=TRENCH P=PUSHED A=AUGERED E=EXISTING) SIZE - TYPE (S=STEEL P=PVC F=FIBER DUCT U=UNI-DUCT)
		CONDUIT SPLICE
		SPAN WIRE / TETHER WIRE
		21 SIDEWALK REMOVAL IN SQ FT
		9 PC CONC SDWLK 4 IN. IN SQ FT
		12 PC CONC SDWLK 4 IN. SPECIAL IN SQ FT

**TRAFFIC SIGNAL WIRING DIAGRAM LEGEND**

EXISTING	PROPOSED	DESCRIPTION
		8" SIGNAL SECTION
		DIRECTIONAL SIGNAL SECTION
		9" PEDESTRIAN SIGNAL FACE
		12" PEDESTRIAN SIGNAL FACE
		SIGNAL FACE WITH BACKPLATE
		PROGRAMMED SIGNAL SECTION
		SIGNAL SECTION WITH LOUVRE
		DUAL-INDICATION SIGNAL SECTION
		INDUCTION DETECTOR LOOP
		QUADRAPOLE DETECTOR LOOP
		DIRECT-CONNECTED LOOP LEAD-IN ( TWISTED )
		ELECTRIC CABLE DENOTING NUMBER OF CONDUCTORS
		ELECTRIC CABLE TO BE REMOVED
		ELECTRIC CABLE IDENTIFIER TAPE CODES (R= RED W= WHITE Y= YELLOW G= GREEN B= BLUE O= ORANGE)
		PEDESTRIAN PUSHBUTTON DETECTOR

REVISIONS	
NAME	DATE

ILLINOIS DEPARTMENT OF TRANSPORTATION  
**TRAFFIC SIGNAL LEGEND**

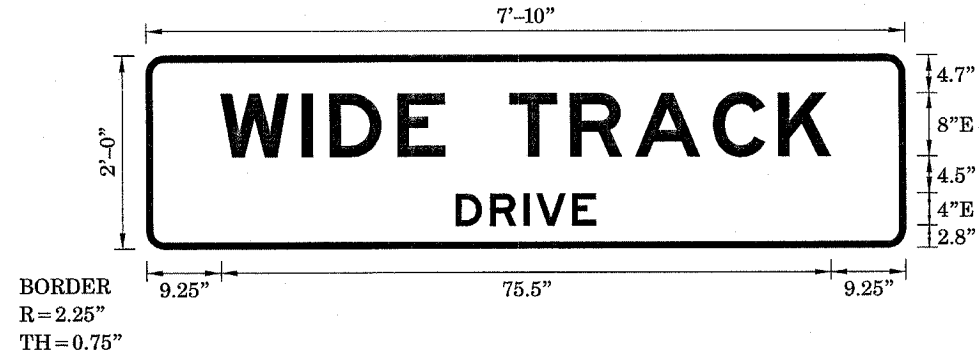
SCALE: VERT.  
HORIZ.  
DATE

DRAWN BY  
CHECKED BY



F.A.P. RTE.	SECTION	COUNTY	TOTAL SHEETS	SHEET NO.
663	(17X)TS-1	SANGAMON	10	9
STA.		TO STA.		
FED. ROAD DIST. NO.		ILLINOIS	FED. AID PROJECT	

**SIGN DETAIL**



SIGN NUMBER	001
WIDTH x HGHT.	7'-10" x 2'-0"
BORDER WIDTH	0.75"
CORNER RADIUS	2.25"
MOUNTING	Overhead
BACKGROUND	TYPE: Reflective
	COLOR: Green
LEGEND/BORDER	TYPE: Reflective
	COLOR: White /White

SYMBOL	X	Y	WID	HT

Panel Style: Mast Arm.ssi  
 Dimensions are in inches.tenths

Letter locations are panel edge to lower left corner

LETTER POSITIONS (X)										LENGTH	SERIES/SIZE
W	I	D	E		T	R	A	C	K		E8
9.2	19.3	22.7	31.1	37	45	52.5	60.6	70.2	78.3	75.5	
D	R	I	V	E							E4
38.3	42.5	46.8	48.3	52.7						17.3	

PLOT DATE = 3/31/2005  
 PLOT SCALE = 20.0000 / IN.  
 REFERENCE = #REF#

REVISIONS	
NAME	DATE

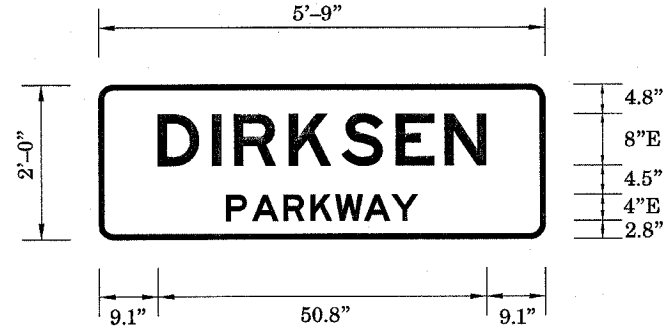
ILLINOIS DEPARTMENT OF TRANSPORTATION  
**SIGN DETAILS**  
 DIRKSEN PKWY & WIDE TRACK DR  
 SANGAMON COUNTY

SCALE: NOT TO SCALE  
 DATE: FEB 2005

DRAWN BY  
 CHECKED BY

F.A.P. RTE.	SECTION	COUNTY	TOTAL SHEETS	SHEET NO.
663	(17X)TS-1	SANGAMON	10	10
STA. TO STA.				
FED. ROAD DIST. NO. ILLINOIS FED. AID PROJECT				

**SIGN DETAIL**



BORDER  
R = 2.25"  
TH = 0.75"

SIGN NUMBER	002
WIDTH x HGHT.	5'-9" x 2'-0"
BORDER WIDTH	0.75"
CORNER RADIUS	2.25"
MOUNTING	Overhead
BACKGROUND	TYPE: Reflective COLOR: Green
LEGEND/BORDER	TYPE: Reflective COLOR: White /Pure White

SYMBOL	X	Y	WID	HT

Panel Style: Mast Arm.ssi  
Dimensions are in inches.tenths

Letter locations are panel edge to lower left corner

LETTER POSITIONS (X)							LENGTH	SERIESSIZE
D	I	R	K	S	E	N		E8
9.1	17.5	21	29.4	37.5	46	53.5	50.8	
P	A	R	K	W	A	Y		E4
19.7	23.7	28.5	32.7	36.6	41	45.3	29.6	

PLOT DATE = 3/31/2005  
 FILE NAME = 210000001.dwg  
 PLOT SCALE = 20,000000 / IN.  
 REFERENCE = #REF#

REVISIONS	
NAME	DATE

ILLINOIS DEPARTMENT OF TRANSPORTATION  
**SIGN DETAILS**  
DIRKSEN PKWY & WIDE TRACK DR  
SANGAMON COUNTY

SCALE: NOT TO SCALE  
DATE: FEB 2005  
DRAWN BY  
CHECKED BY