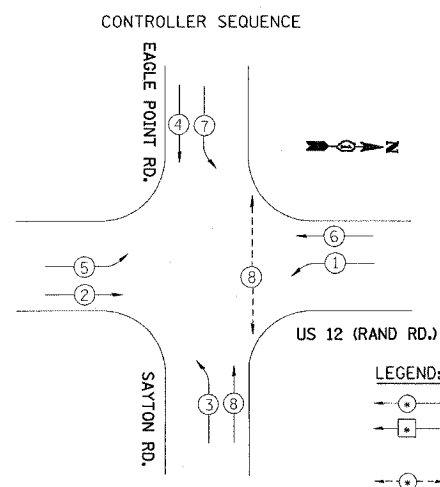


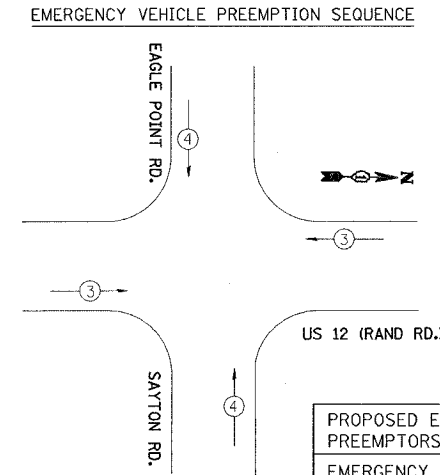
F.A.P.	SECTION	COUNTY	TOTAL SHEETS	SHEET NO.
334	2005-002 TS	LAKE	12	8
STA.		TO STA.		
FED. ROAD DIST. NO. 1		ILLINOIS	FED. AID PROJECT	
CONTRACT NO. 62906				



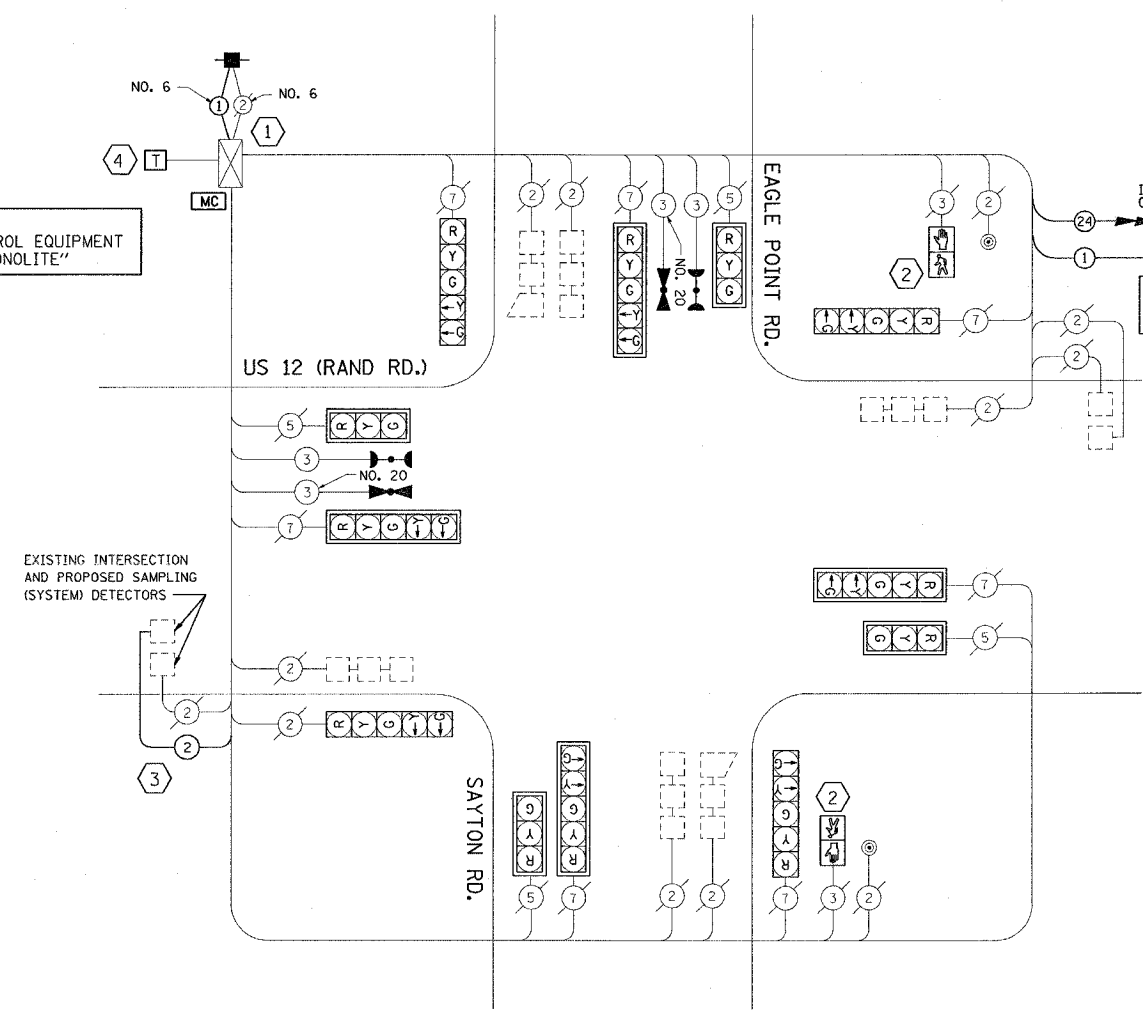
NOTE: THE TRAFFIC SIGNAL CONTROL EQUIPMENT FOR THIS PROJECT IS "ECONOLITE"

- LEGEND:
- ⊕ DUAL ENTRY PHASE
  - ⊖ SINGLE ENTRY PHASE
  - OVERLAP
  - ⊙ PEDESTRIAN PHASE
  - NUMBER REFERS TO ASSOCIATED PHASE

PHASE DESIGNATION DIAGRAM



EMERGENCY VEHICLE PREEMPTOR	3	4
MOVEMENT	←	↑



CABLE PLAN  
NOT TO SCALE

- CABLE PLAN LEGEND
- | EXISTING | PROPOSED | EXISTING | PROPOSED | DESCRIPTION  |
|----------|----------|----------|----------|--|
| ⊕        | ⊕        | ⊕        | ⊕        | 8" (200mm) TRAFFIC SIGNAL SECTION                                  |
| ⊖        | ⊖        | ⊖        | ⊖        | 12" (300mm) TRAFFIC SIGNAL SECTION                                 |
| ⊙        | ⊙        | ⊙        | ⊙        | 12" (300mm) PEDESTRIAN SIGNAL SECTION                              |
| ⊙        | ⊙        | ⊙        | ⊙        | 12" (300mm) PEDESTRIAN SIGNAL SECTION                              |
| ⊠        | ⊠        | ⊠        | ⊠        | CONTROLLER CABINET   |
| ⊠        | ⊠        | ⊠        | ⊠        | SERVICE INSTALLATION   |
| ⊠        | ⊠        | ⊠        | ⊠        | VEHICLE DETECTOR, INDUCTION LOOP                                   |
| ⊠        | ⊠        | ⊠        | ⊠        | TELEPHONE INSTALLATION   |
| ⊠        | ⊠        | ⊠        | ⊠        | MAGNETIC DETECTOR  |
| ⊠        | ⊠        | ⊠        | ⊠        | EMERGENCY VEHICLE LIGHT DETECTOR                                   |
| ⊠        | ⊠        | ⊠        | ⊠        | CONFIRMATION BEACON  |
| ⊠        | ⊠        | ⊠        | ⊠        | PUSHBUTTON DETECTOR  |
| ⊠        | ⊠        | ⊠        | ⊠        | RAILROAD CONTROL CABINET   |
| ⊠        | ⊠        | ⊠        | ⊠        | ILLUMINATED SIGN "NO LEFT TURN"                                    |
| ⊠        | ⊠        | ⊠        | ⊠        | ILLUMINATED SIGN "NO RIGHT TURN"                                   |
| H/C      | ⊠        | C        | ⊠        | GROUND ROD AT HANDHOLE (H), DOUBLE HANDHOLE (H), OR CONTROLLER (C) |
| P        | ⊠        | P        | ⊠        | GROUND ROD AT POST (P) OR MAST ARM POLE (MA)                       |
| S        | ⊠        | S        | ⊠        | GROUND ROD AT ELECTRIC SERVICE INSTALLATION                        |

FOUNDATION (DEPTH)	(FT.) (m)	CABLE SLACK	(FT.) (m)	CABLE SLACK	(FT.) (m)
TYPE A - POST	4 (1.2)	HANDHOLE	6.5 (2.0)	ALL FOUNDATIONS	3.5 (1.0)
D - CONTROLLER	4 (1.2)	DOUBLE HANDHOLE	13 (4.0)	MAST ARM (L) POLE	20'-H/-2'
E - M. ARM POLE	10 (3.0)	SIGNAL POST	2 (0.5)	BRACKET MOUNTED	15 (4.0)
24" (600mm)	10 (3.0)	CONTROLLER CAB.	1 (0.5)	PED. PUSHBUTTON	4 (1.2)
30" (750mm)	15 (4.6)	FIBER OPTIC	13 (4.0)	ELECTRIC SERVICE	13.5 (4.1)
		ELECTRIC SERVICE	1 (0.5)	SERVICE TO GROUND	13.5 (4.1)
		GROUND CABLE	1 (0.5)	POST MOUNTED	6 (1.8)

SUMMARY OF QUANTITIES

PAY ITEM	UNIT	QUANTITY
MODIFY EXISTING CONTROLLER	EACH	1
ELECTRIC CABLE IN CONDUIT, LEAD IN, NO. 14 1 PAIR	FOOT	390
ELECTRIC CABLE IN CONDUIT, GROUNDING, NO. 6 1C	FOOT	20
DRILL EXISTING HANDHOLE	EACH	1
CONDUIT IN TRENCH, 2" DIA., GALVANIZED STEEL	FOOT	8
TRENCH AND BACKFILL FOR ELECTRICAL WORK	FOOT	8
MAINTENANCE OF EXISTING TRAFFIC SIGNAL INSTALLATION	EACH	1
SERVICE INSTALLATION - POLE MOUNTED	EACH	1
REMOVE EXISTING TRAFFIC SIGNAL EQUIPMENT	EACH	1
PEDESTRIAN SIGNAL HEAD, 1-FACE, BRACKET MOUNTED	EACH	2
* LIGHT DETECTOR	EACH	2
* LIGHT DETECTOR AMPLIFIER	EACH	1
* ELECTRIC CABLE IN CONDUIT, NO. 20 3/C, TWISTED, SHIELDED	FOOT	500

\* 100% COST TO VILLAGE OF FOX LAKE

NOTES:

- 1 PROPOSED MASTER CONTROLLER TO BE INSTALLED WITH LOCAL CONTROLLER IN EXISTING TYPE IV CABINET
- 2 REUSE EXISTING CABLE FOR ALL NEW PEDESTRIAN SIGNAL HEADS INSTALLATION
- 3 INSTALL NEW ELECTRIC CABLE IN CONDUIT, LEAD-IN, NO. 14, 1 PAIR
- 4 INSTALL 1" UNIT DUCT FOR THE AMERITECH SERVICE FROM THE POINT OF ENTRY OF THE TELEPHONE CONDUIT IN THE DOUBLE HANDHOLE THROUGH THE CONTROLLER CABINET FOUNDATION. THIS WORK SHALL BE INCLUDED TO THE MASTER CONTROLLER PAY ITEM

TYPE	NO. LAMPS	WATTAGE INCAND	WATTAGE LED	% OPERATION	TOTAL WATTAGE
SIGNAL (RED)	12	135	17	0.50	810
(YELLOW)	12	135	25	0.25	405
(GREEN)	12	135	15	0.25	405
ARROW	16	135	12	0.10	216
PED. SIGNAL	2	90	25	1.00	180
CONTROLLER	1	100	100	1.00	100
ILLUM. SIGN		84	35	0.05	
TOTAL =					2116

ENERGY COSTS TO:  
ILLINOIS DEPARTMENT OF TRANSPORTATION  
201 WEST CENTER COURT  
SCHAUMBURG, ILLINOIS 60196-1096  
ENERGY SUPPLY CONTACT: JUDY SCHOMER  
PHONE: 847-870-2063  
COMPANY: COMMONWEALTH EDISON

NAME	DATE

ILLINOIS DEPARTMENT OF TRANSPORTATION  
CABLE PLAN, PHASE DESIGNATION DIAGRAM,  
EMERGENCY VEHICLE PREEMPTION SEQUENCE  
AND SCHEDULE OF QUANTITIES  
US 12 (RAND RD.) AT EAGLE PT. RD./SAYTON RD.  
SCALE: NONE  
DATE: 05/05  
DRAWN BY: SN  
DESIGNED BY: SN  
CHECKED BY: DD