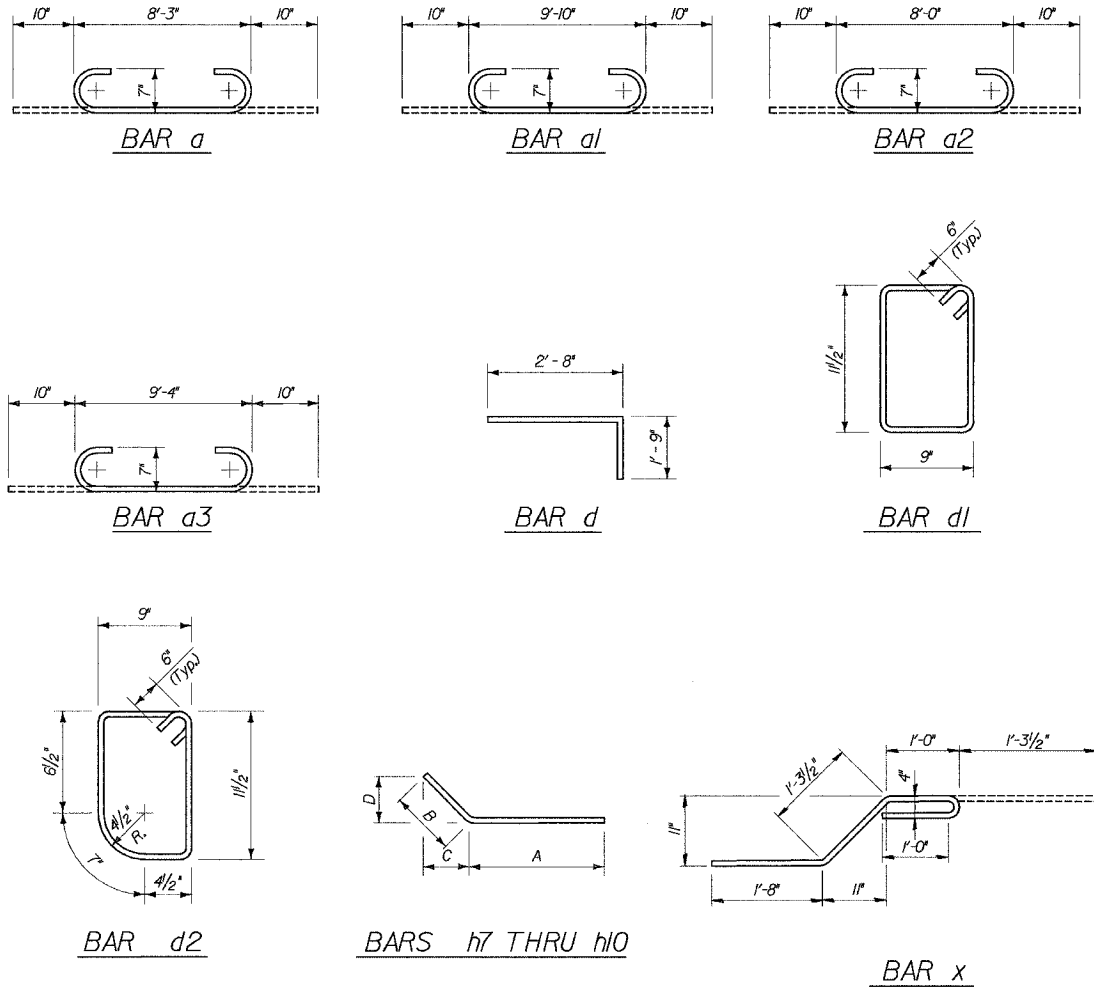
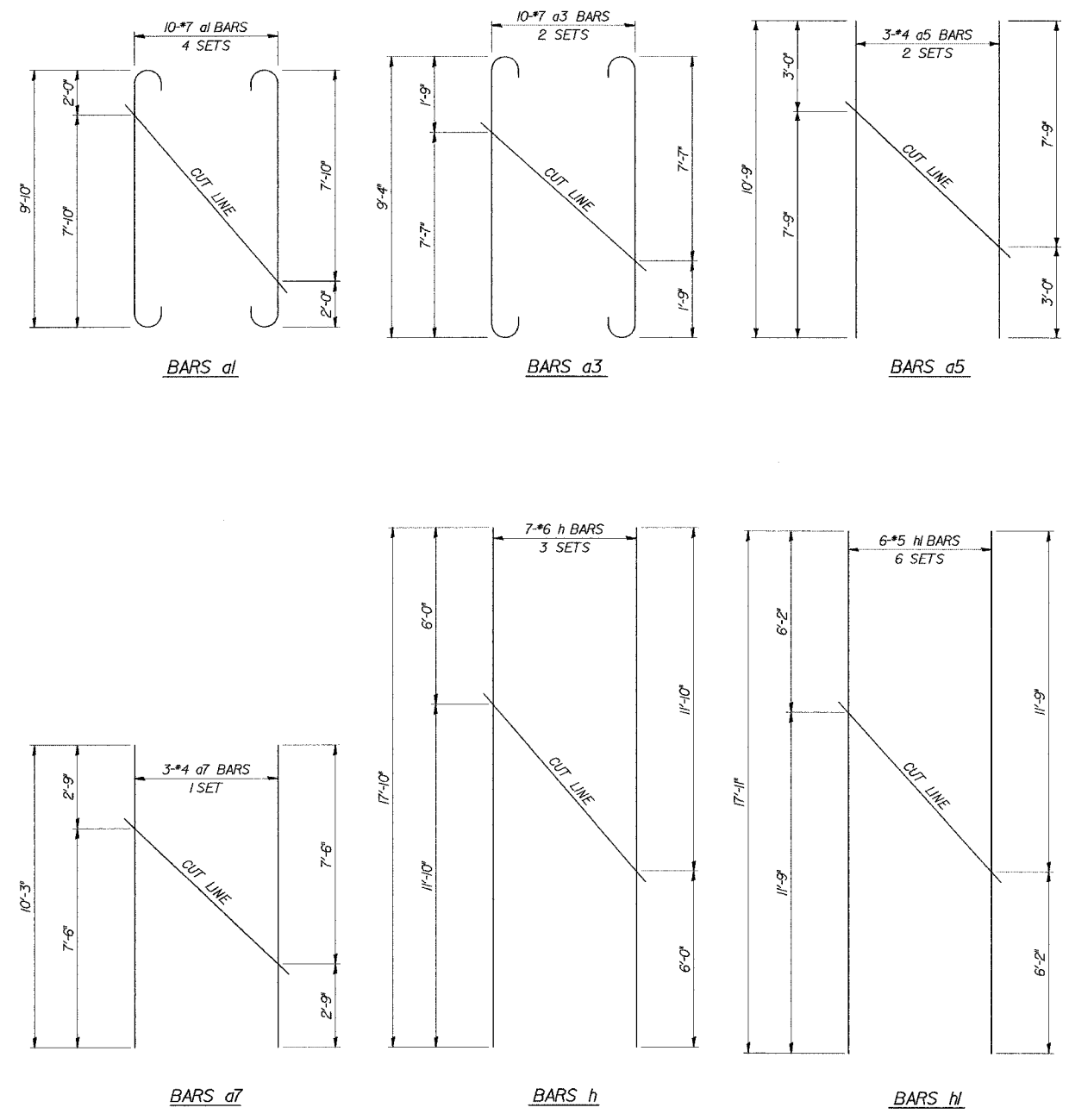


**BILL OF MATERIAL**

Bar	No.	Size	Length	Shape
a	88	7	9'-11"	U
a1	40	7	11'-6"	U
a2	44	7	9'-8"	U
a3	20	7	11'-0"	U
a4	12	4	8'-3"	U
a5	6	4	10'-9"	U
a6	6	4	8'-0"	U
a7	3	4	10'-3"	U
d	64	4	4'-5"	L
d1	33	4	4'-5"	L
d2	33	4	4'-3"	L
h	21	6	17'-10"	U
h1	36	5	17'-11"	U
h2	6	6	5'-10"	U
h3	6	6	12'-0"	U
h4	24	5	5'-10"	U
h5	24	5	12'-0"	U
h6	16	6	10'-9"	U
h7	14	4	8'-8"	U
h8	14	4	8'-0"	U
h9	14	6	15'-4"	U
h10	14	6	8'-0"	U
h11	8	6	9'-6"	U
h12	6	6	31'-6"	U
v	156	4	5'-1"	L
v1	12	4	6'-4"	L
v2	4	4	6'-0"	L
v3	4	4	6'-9"	L
v4	4	4	7'-11"	L
v5	4	4	7'-2"	L
x	132	4	5'-3"	L
x1	12	4	8'-11"	L
x2	12	4	8'-3"	L
x3	12	4	8'-8"	L
CONCRETE BOX CULVERTS			CU. YD.	548
REINFORCEMENT BARS			POUND	9,072



**FIELD CUTTING DIAGRAMS**  
ORDER BARS FULL LENGTH. CUT AS SHOWN AND USE REMAINDER OF BARS IN OPPOSITE END.

**BAR BENDING DIAGRAMS**

Bar	A		B		C		D	
	Ft.	In.	Ft.	In.	Ft.	In.	Ft.	In.
h7	5	8	3	0	1	3/4	2	8 3/4
h8	5	0	3	0	1	3/4	2	8 3/4
h9	12	4	3	0	2	8 3/4	1	3/4
h10	5	0	3	0	2	8 3/4	1	3/4

09-Jun-2005 10:27 s:\Dept\Structures\3050002-IL-US30\CULVERTS\SUPPLEMENT\12-13-14-WING-F.dgn

DESIGNED	ASP
CHECKED	CDS
DRAWN	BEM
CHECKED	ASP

REVISIONS	
NAME	DATE

**U.S. 30 OVER STREAM**  
**0.3 MILES W.OF WOLF RD.**  
**BARBILL & DETAILS**  
U.S. ROUTE 30 (LINCOLN HIGHWAY)  
F.A.P. 353 (U.S. 30)  
SECTION (12 & 13) T-1  
STATION 293+05.00  
WILL COUNTY  
STRUCTURE NUMBER 099-4661