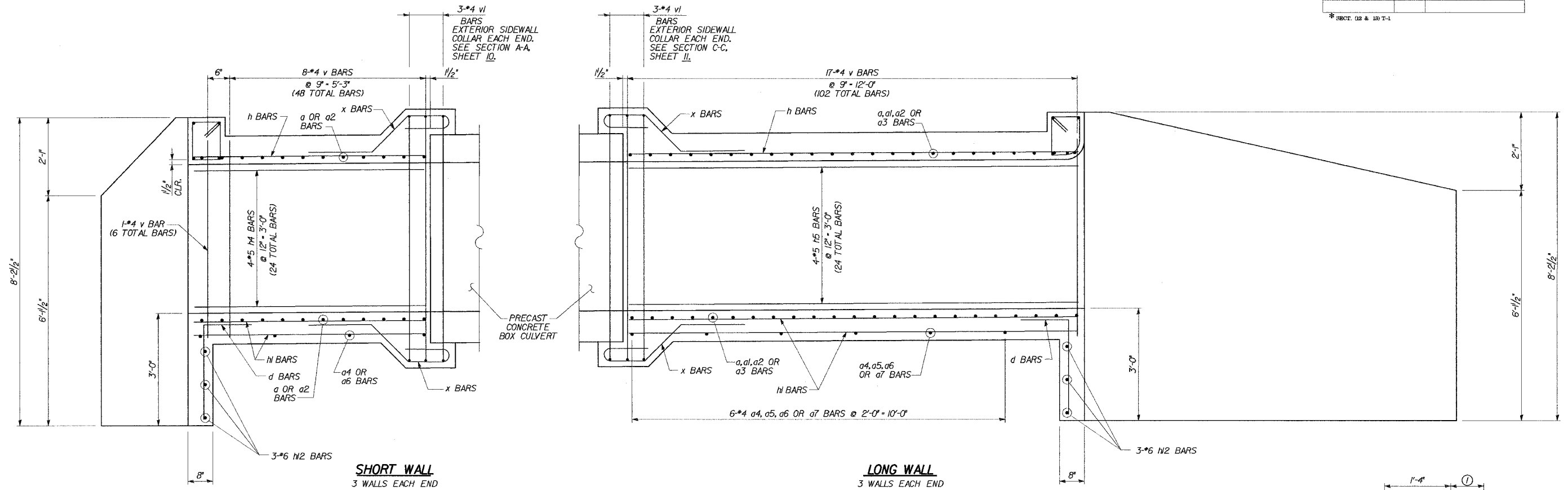
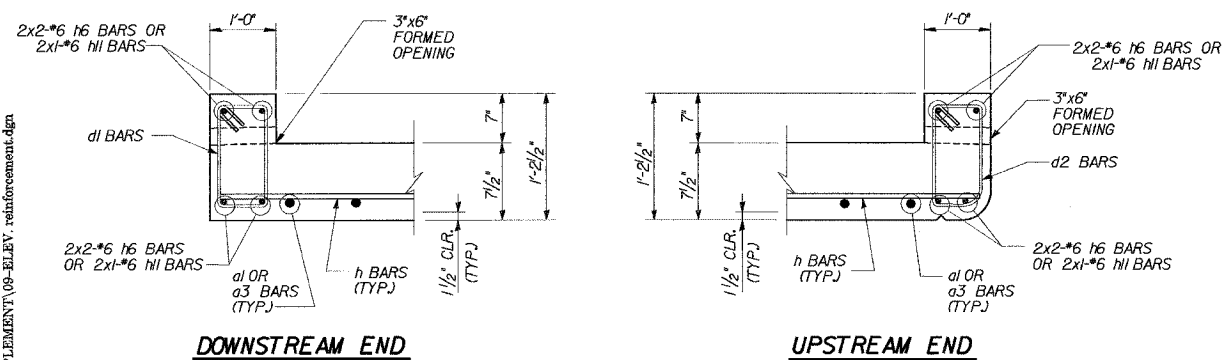


ROUTE NO.		SECTION	COUNTY	TOTAL SHEETS	SHEET NO.
FAP 353		*	WILL	53	29

*SECT. 12 & 13 T-1

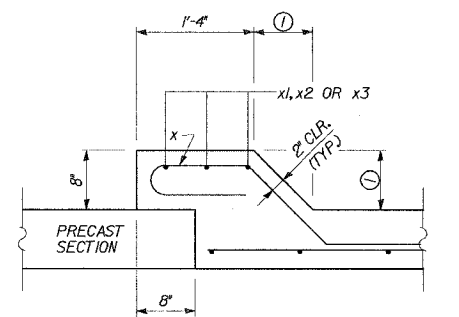
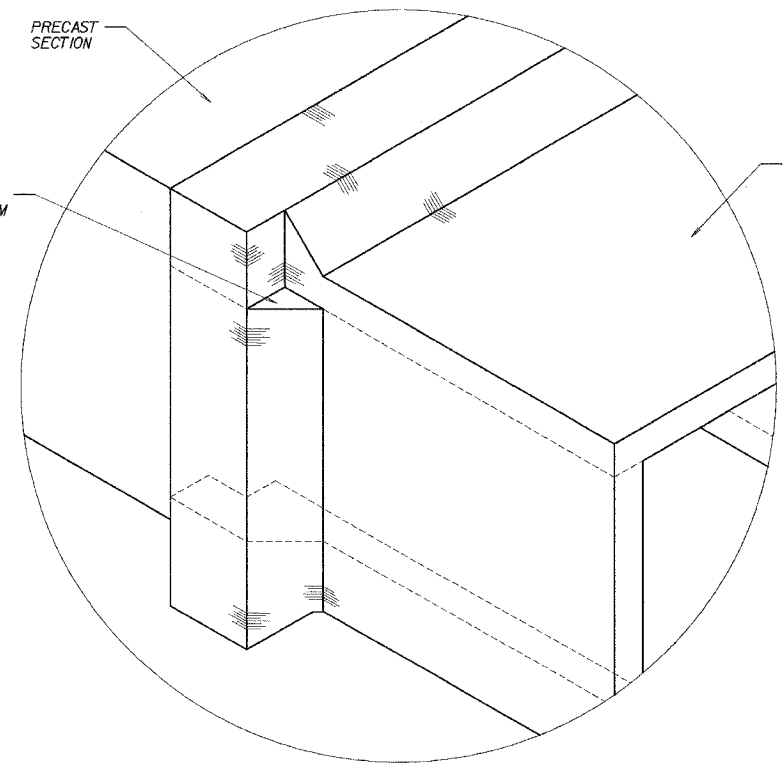
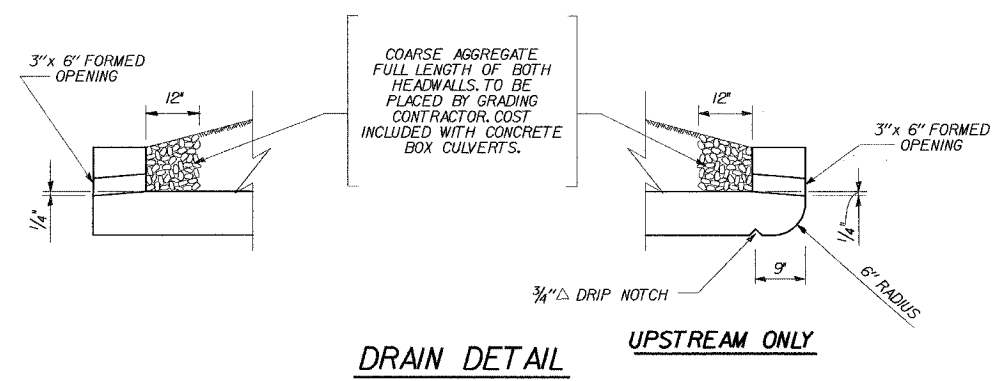


ELEVATION



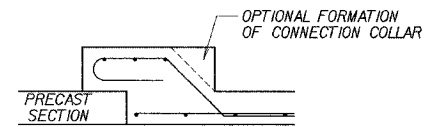
HEADWALL DETAILS

NOTE:
BARS INDICATED THUS 12x4-#5 ETC. INDICATES 12 LINES OF BARS WITH 4 LENGTHS PER LINE.



PRECAST TO CAST-IN-PLACE CONNECTION COLLAR

TOP SLAB = 8 1/2"
BOTTOM SLAB = 7 1/2"
SIDEWALLS = 8"



OPTIONAL PRECAST TO CAST-IN-PLACE CONNECTION COLLAR

NOTE:
ADDITIONAL CONCRETE USED FOR THE OPTIONAL COLLAR FORMATION WILL BE PROVIDED AT THE CONTRACTOR'S EXPENSE.

REVISIONS	
NAME	DATE

U.S. 30 OVER STREAM
0.3 MILES W. OF WOLF RD.
END SECTIONS ELEVATION
U.S. ROUTE 30 (LINCOLN HIGHWAY)
F.A.P. 353 (U.S. 30)
SECTION (12 & 13) T-1
STATION 293+05.00
WILL COUNTY
STRUCTURE NUMBER 099-4661

09-Jun-2005 10:26 s:\Dept\Structures\0604002-LL-US00\CULVERTS\SUPPLEMENT\09-ELEV-reinforcement.dgn

DESIGNED	ASP
CHECKED	CDS
DRAWN	BEM
CHECKED	ASP