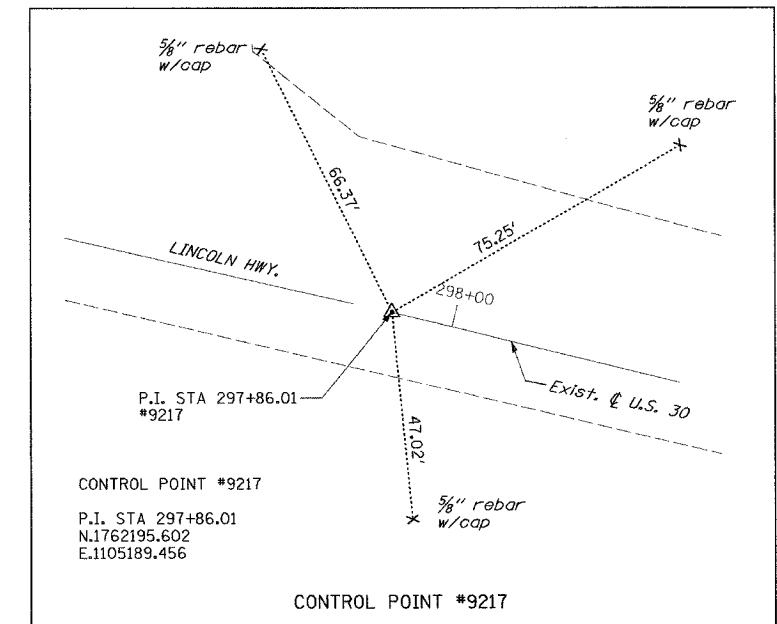
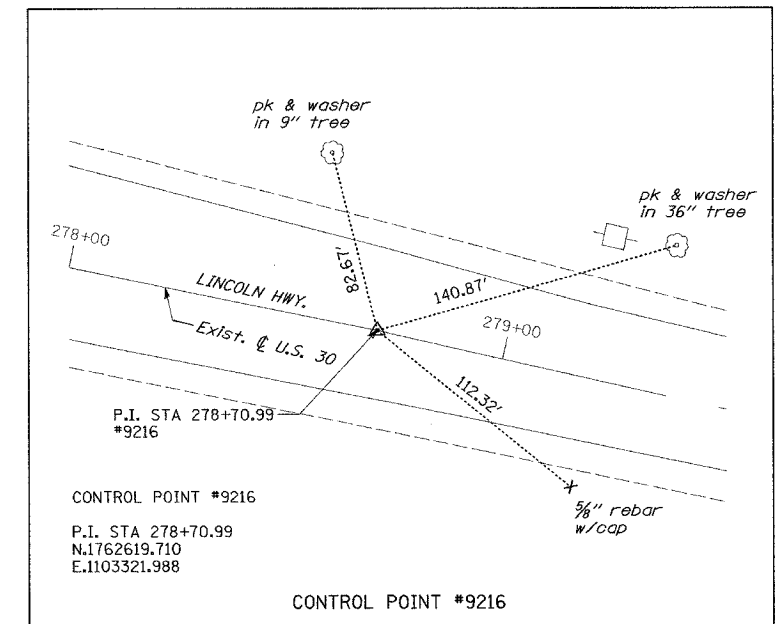
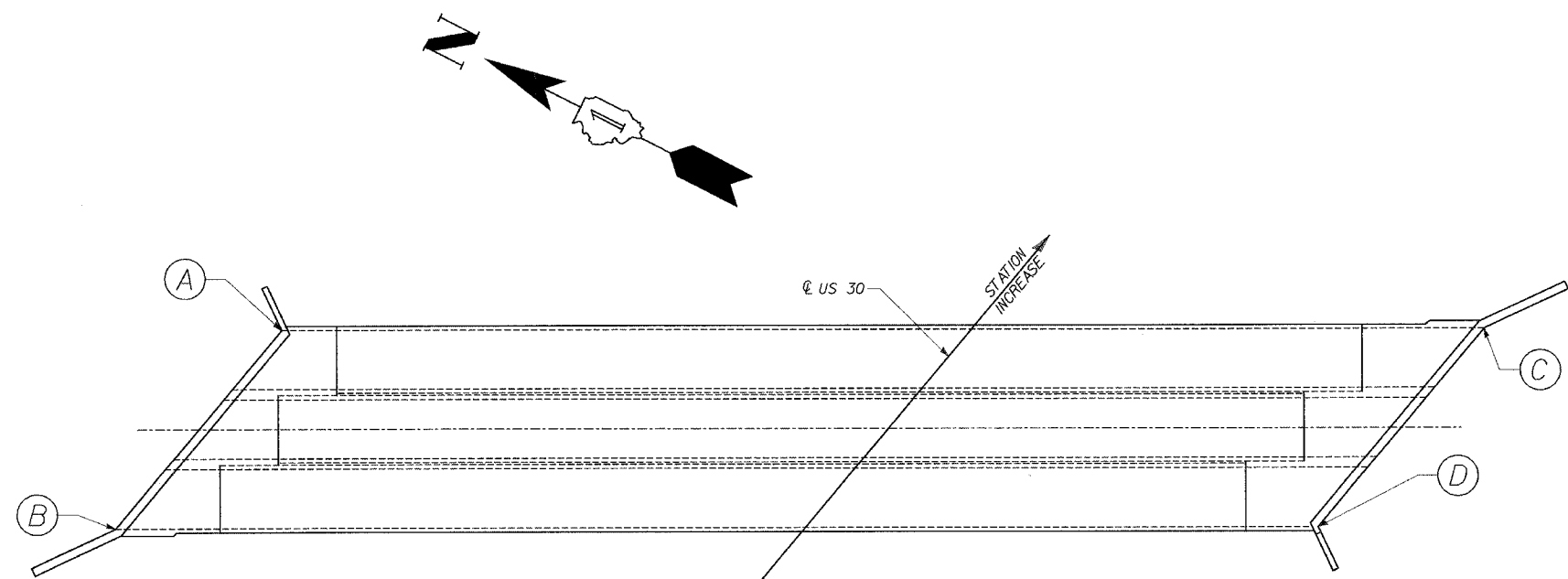


ROUTE NO.		SECTION	COUNTY	TOTAL SHEETS	SHEET NO.
FAP 353		*	WILL	53	26

* SECT. (12 & 13) T-1



COORDINATES		
POINT	NORTHING	EASTING
CP #9216	1762619.710	1103321.988
CP #9217	1762195.602	1105189.456
A	1762368.076	1104712.782
B	1762375.063	1104682.018
C	1762229.780	1104783.873
D	1762236.767	1104753.109

REVISIONS	
NAME	DATE

U.S. 30 OVER STREAM
0.3 MILES W.OF WOLF RD.
HORIZONTAL CONTROL
U.S. ROUTE 30 (LINCOLN HIGHWAY)
F.A.P. 353 (U.S. 30)
SECTION (12 & 13) T-1
STATION 293+05.00
WILL COUNTY
STRUCTURE NUMBER 099-4661

e:\Dept\Structures\3650002-IL-US30\CUIVBTFF\SUPPLEMENT\06-HORIZ CONTROL.dgn

DESIGNED	ASP
CHECKED	CDS
DRAWN	BEM
CHECKED	ASP