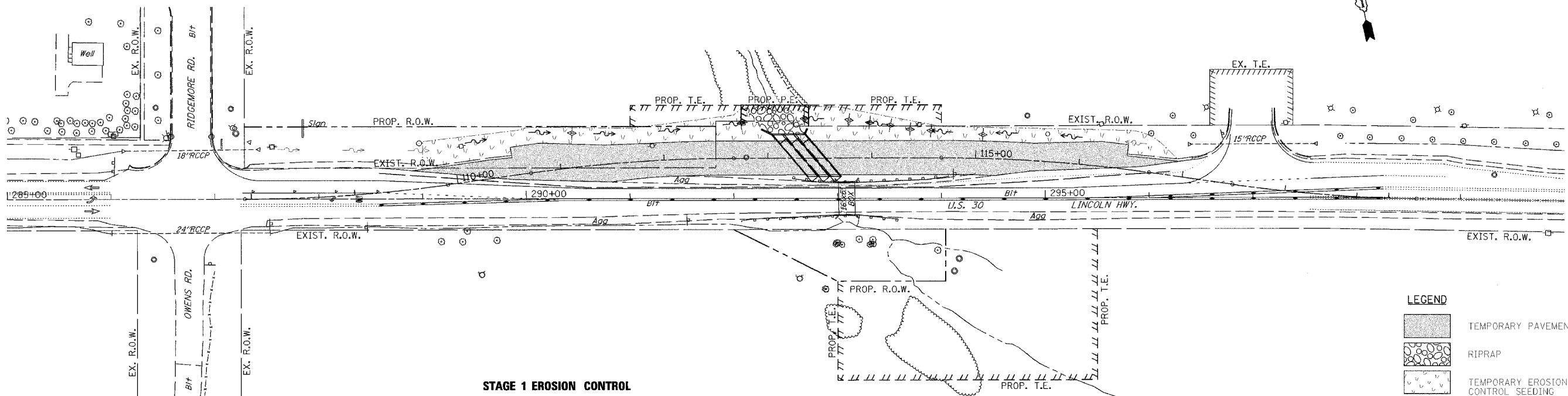


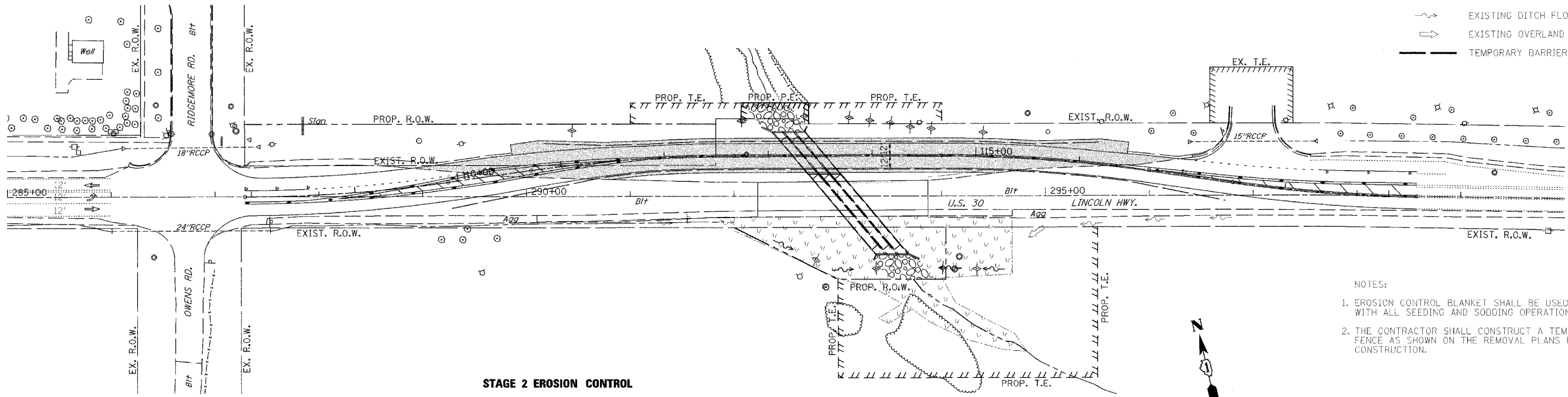
F.A.P. RTE.	SECTION	COUNTY	TOTAL SHEETS	SHEET NO.
353	(12&13)T-1	WILL	53	19
STA.	TO STA.			



STAGE 1 EROSION CONTROL

LEGEND

	TEMPORARY PAVEMENT
	RIPRAP
	TEMPORARY EROSION CONTROL SEEDING
	PERIMETER EROSION BARRIER
	DITCH CHECK TEMPORARY
	CLEARING AND GRADING LIMITS
	PROPOSED DITCH FLOWLINE
	EXISTING DITCH FLOWLINE
	EXISTING OVERLAND FLOW
	TEMPORARY BARRIER WALL



STAGE 2 EROSION CONTROL

- NOTES:
1. EROSION CONTROL BLANKET SHALL BE USED WITH ALL SEEDING AND SODDING OPERATIONS.
 2. THE CONTRACTOR SHALL CONSTRUCT A TEMPORARY FENCE AS SHOWN ON THE REMOVAL PLANS PRIOR TO CONSTRUCTION.



REVISIONS		ILLINOIS DEPARTMENT OF TRANSPORTATION
NAME	DATE	
		U.S. RTE. 30 OVER STREAM 0.3 MI. W. OF WOLF RD. EROSION CONTROL PLANS STAGES 1 & 2 STA. 270+00 TO STA. 300+00
SCALE : 1" = 50'		DRAWN BY : BAE
DATE : 06/17/05		CHECKED BY : GB