

F.A.P. RTE.	SECTION	COUNTY	TOTAL SHEETS	SHEET NO.
353	(12&13)T-1	WILL	53	12
STA.	TO STA.			

LEGEND

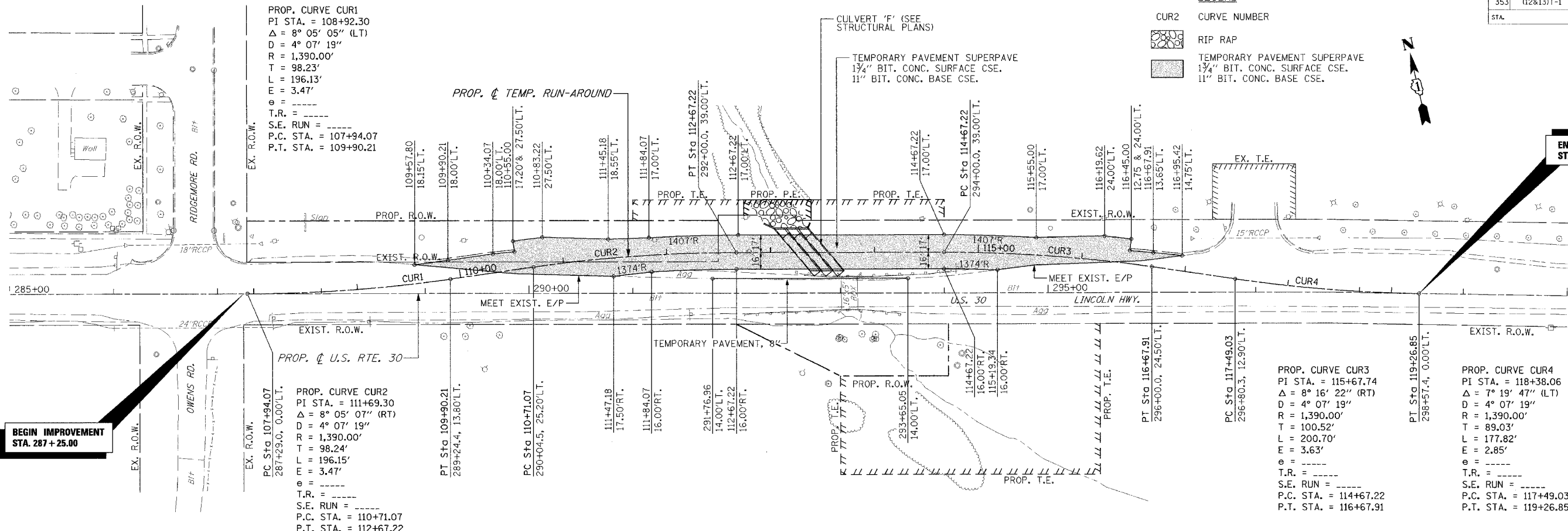
CUR2 CURVE NUMBER

RIP RAP

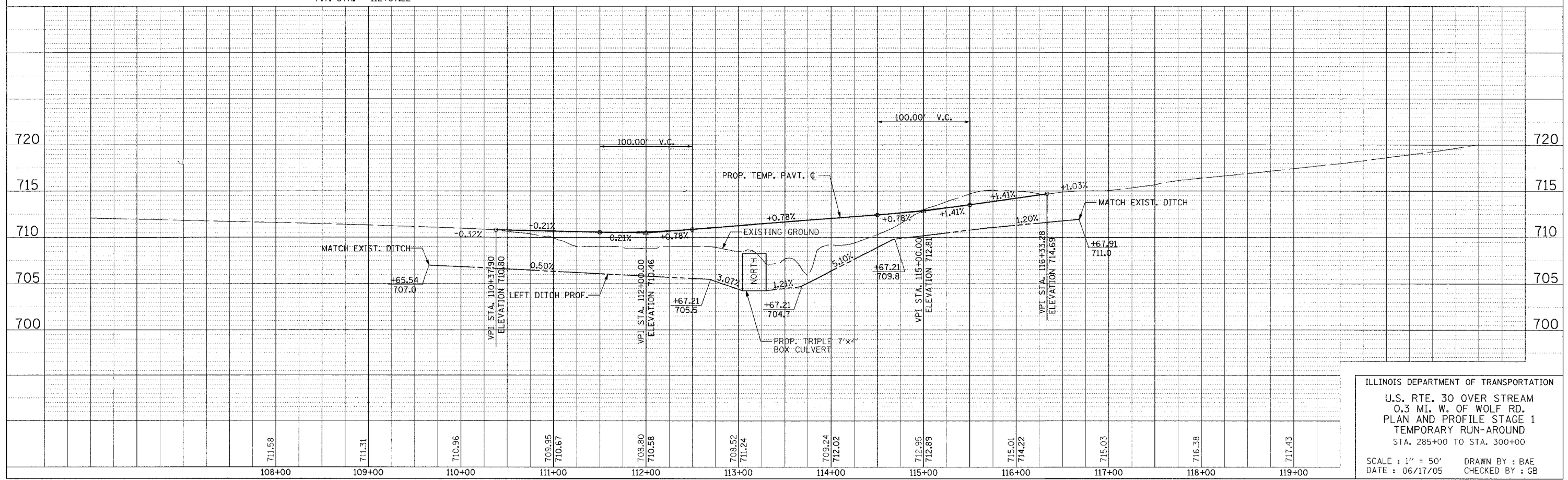
TEMPORARY PAVEMENT SUPERPAVE
1 1/4" BIT. CONC. SURFACE CSE.
11" BIT. CONC. BASE CSE.



END IMPROVEMENT
STA. 298 + 57.40



BEGIN IMPROVEMENT
STA. 287 + 25.00



ILLINOIS DEPARTMENT OF TRANSPORTATION
U.S. RTE. 30 OVER STREAM
0.3 MI. W. OF WOLF RD.
PLAN AND PROFILE STAGE 1
TEMPORARY RUN-AROUND
STA. 285+00 TO STA. 300+00
SCALE: 1" = 50'
DATE: 06/17/05
DRAWN BY: BAE
CHECKED BY: GB